

The potential effects of climate change on amphibian distribution, range fragmentation and turnover in China

Ren-Yan Duan^{1,2,*}, Xiao-Quan Kong^{2,*}, Min-Yi Huang², Sara Varela^{3,4} and Xiang Ji¹

¹ Jiangsu Key Laboratory for Biodiversity and Biotechnology, College of Life Sciences, Nanjing Normal University, Nanjing, Jiangsu, China

² College of Life Sciences, Anqing Normal University, Anqing, Anhui, China

³ Departamento de Ciencias de la Vida, Edificio de Ciencias, Campus Externo, Universidad de Alcalá, Madrid, Spain

⁴ Museum für Naturkunde, Leibniz Institute for Evolution and Biodiversity Science, Berlin, Germany

* These authors contributed equally to this work.

ABSTRACT

Many studies predict that climate change will cause species movement and turnover, but few have considered the effect of climate change on range fragmentation for current species and/or populations. We used MaxEnt to predict suitable habitat, fragmentation and turnover for 134 amphibian species in China under 40 future climate change scenarios spanning four pathways (RCP2.6, RCP4.5, RCP6 and RCP8.5) and two time periods (the 2050s and 2070s). Our results show that climate change may cause a major shift in spatial patterns of amphibian diversity. Amphibians in China would lose 20% of their original ranges on average; the distribution outside current ranges would increase by 15%. Suitable habitats for over 90% of species will be located in the north of their current range, for over 95% of species in higher altitudes (from currently 137–4,124 m to 286–4,396 m in the 2050s or 314–4,448 m in the 2070s), and for over 75% of species in the west of their current range. Also, our results predict two different general responses to the climate change: some species contract their ranges while moving westwards, southwards and to higher altitudes, while others expand their ranges. Finally, our analyses indicate that range dynamics and fragmentation are related, which means that the effects of climate change on Chinese amphibians might be two-folded.

Submitted 25 January 2016

Accepted 7 June 2016

Published 28 July 2016

Corresponding author

Xiang Ji, xiangji150@hotmail.com

Academic editor

Stuart Pimm

Additional Information and
Declarations can be found on
page 13

DOI 10.7717/peerj.2185

© Copyright

2016 Duan et al.

Distributed under

Creative Commons CC-BY 4.0

OPEN ACCESS

Subjects Biodiversity, Conservation Biology, Ecology, Evolutionary Studies, Zoology

Keywords MaxEnt, Dispersal, Turnover, Distribution, Climate impacts, Fragmentation, Range shifts, Amphibians

INTRODUCTION

Global climate is changing rapidly because of anthropogenic greenhouse gas emissions, with unexpected consequences (*Solomon, 2007*). For example, *Solomon (2007)* predicted that, if nothing is done to limit the production of greenhouse gases, the average temperature on the earth's surface is projected to rise by 1.1–6.4 °C between 1990 and 2100. Climate change can alter the distribution of organisms by causing shifts in area,

latitude, longitude and/or altitude and thus impact their geographic ranges (Pearson & Dawson, 2003; Raxworthy et al., 2008). Range changes can impact ecosystem function and biodiversity (Raxworthy et al., 2008).

The prediction of climate-driven shifts in species' potential ranges under future climate scenarios relies on the application of species distribution models (SDMs) (Collevatti et al., 2013; Eskildsen et al., 2013). SDMs use current climate data to model species' existing distributions, and forecast potential future distributions under various climate scenarios, assuming that species can follow future climate envelopes (Elith & Leathwick, 2009). These models are needed to understand the possible responses of species to future climate change and how current species' ranges are determined by potential causal factors (Zhang et al., 2012). For example, Pounds et al. (2006) observed a decline in amphibian populations under climate warming using SDMs and Lawler et al. (2006) used SDMs to assess the relative vulnerability of amphibians to future climate change, observing that several regions in Central America will experience high species turnover. More recently, Ochoa-Ochoa et al. (2012) showed that species with a low dispersal capability have high extinction rates, and that climate-driven population declines may be species- and region-specific.

Amphibians are sensitive to changes in thermal and hydric environments due to their unshelled eggs, highly permeable skin and unique biphasic life-cycles (Ochoa-Ochoa et al., 2012; Stuart et al., 2004). At least one third of some 6,000 currently known amphibian species are threatened with extinction, making amphibians one of the most threatened groups of animals on earth (Hof et al., 2011; Stuart et al., 2004). The reasons for this global amphibian decline and rise in threatened species are numerous and complex, but for many species climate change cannot be precluded as a main cause (Stuart et al., 2004; Ficetola et al., 2015).

Locations and regions with many endemic or endangered species, known as hotspots, are more sensitive to climate change (Malcolm et al., 2006). China is a confluence of two main biogeographical divisions, the Oriental and Palearctic Realms, and contains many priority ecoregions for global conservation (Fei et al., 2009). Some 440 amphibian species, of which 263 are endemic, have been found in China, and the potential remains for further discoveries or redescrptions (<http://www.amphibiachina.org>). The IUCN (2015) reported that 28% of amphibians in mainland China are threatened or at risk of extinction and 65% of these are endemic. Most of these species are distributed in forests, farmlands and wetlands. Climate change has been hypothesized to have severe synergistic effects on Chinese amphibians because it may exacerbate the adverse effects of habitat destruction and fragmentation associated with anthropogenic land-use change that may increase amphibian extinction risk (Hof et al., 2011). Quantifying the general trends of the climate change-driven shifts in species distribution and abundance is extremely important for adequate conservation policies. However, despite the high endemism and richness of amphibian species in China, to our knowledge, no one has attempted to predict climate change-driven shifts in distribution and abundance.

Many studies showed that climate change causes species' movement (Pearson & Dawson, 2003; Raxworthy et al., 2008) and significant species turnover (Peterson et al., 2002), but few

considered the effect of climate change on fragmentation of current species populations. Here we used MaxEnt (a common SDM) and 40 climate scenarios to study the effect of different greenhouse gas scenarios on the distribution of amphibians in China, assuming that species have no limits to dispersal such that its future distribution becomes the entire area projected by the species distribution model. Our aims are: (1) to quantify the effect of current global warming on Chinese amphibians via potential range shifts, the directions of predicted range shifts and fragmentation of future predicted distributions; (2) calculate the temporal turnover of species composition; and (3) identify priority areas for amphibian conservation across China.

MATERIALS AND METHODS

Species data

Occurrence points for amphibians were collected from the Global Biodiversity Information Facility (GBIF; <http://www.gbif.org>) and published papers. In order to improve the accuracy of prediction, we did not include species with less than ten different geo-referenced occurrences. We obtained a total of 134 species (20 urodeles of the families Cryptobranchidae (1), Hynobiidae (7) and Salamandridae (12), and 114 anurans of the families Bombinatoridae (3), Bufonidae (6), Dicroglossidae (17), Hylidae (6), Megophryidae (27), Microhylidae (10), Ranidae (35) and Rhacophoridae (10) (Table S1)).

Climate variables

To build SDMs we chose five climatic variables: (1) annual precipitation; (2) annual mean temperature; (3) temperature seasonality; (4) minimum temperature of the coldest month; and (5) maximum temperature of the warmest month. Although more bioclimatic variables were available we used these five variables because (1) precipitation and temperature are critical climatic factors in all atmospheric ocean general circulation models (AOGCMs) and reflect the availability of water and energy and directly impact amphibian physiology (Collevatti *et al.*, 2013); (2) these variables are very important in determining the distribution of amphibians (Collevatti *et al.*, 2013; Munguía *et al.*, 2012); and (3) the addition of other climatic variables to SDMs generally increases the danger of over-fitting (Collevatti *et al.*, 2013) and the uncertainty (Varela, Lima-Ribeiro & Terribile, 2015).

Climate layers

Our prediction is based on bioclimatic envelope modeling, which changes with coupled AOGCMs. Different AOGCMs and greenhouse gas scenarios will lead to various changes in species' distributions in the future. The Intergovernmental Panel on Climate Change (IPCC) in its Fifth Assessment Report (AR5) proposes four Representative Concentration Pathways (RCPs). RCPs may be better than the emission scenarios developed in the Special Report on Emissions Scenarios (SRES) and hence RCPs have replaced SRES standards (Wayne, 2013). The four pathways (RCP2.6, RCP4.5, RCP6 and RCP8.5) represent the four possible radiative forcing values (+2.6, +4.5, +6.0 and +8.5 W/m², respectively) (Wayne, 2013). All climate data were obtained at a 5 arc-min

grid scale from WorldClim (<http://www.worldclim.org/>), and those from 1950–2000 were used as a baseline. Five AOGCMs (Integrated Earth System Model (MIROC-ESM), Beijing Climate Center Climate System Model (BCC-CSM1-1), Goddard Institute for Space Studies (GISS-E2-R), Community Climate System Model (CCSM4) and Institute Pierre Simon Laplace (IPSL-CM5A-LR)) were used for the years 2050s and 2070s. For each AOGCM, we used all four RCPs to evaluate different greenhouse gas scenarios. Hence, the total number of climate scenarios considered was 40 (20 scenarios and two time steps).

Species distribution modelling

MaxEnt is a commonly used algorithm in species distribution modelling because of its good predictive performance (*Elith et al., 2011; Varela et al., 2014*). MaxEnt predicts species' probability distributions of habitat suitability by calculating the maximum entropy distribution and constraining the expected value of each of a set of environmental variables to match the empirical average (*Phillips, Anderson & Schapire, 2006*). Using presence-only data, MaxEnt fits an unknown probability distribution within the environmental space defined by the input variables of the cells with known species occurrence records. This unknown probability distribution is proportional to the probability of occurrence (*Elith et al., 2011*).

Analyses were performed in R using the *dismo* package to simulate species distributions (*R Development Core Team, 2013; Hijmans et al., 2015*). We carried out SDMs following *Elith et al. (2011)*. For each species, occurrence points were randomly partitioned into two subsets (calibration and validation, at a ratio of 4:1); this was repeated 100 times, each time choosing different random combinations of occurrence points for the calibration/validation datasets. Next, we calculated model parameters and used them to predict future distributions.

The prediction results of the SDMs were evaluated using the area under the receiver operating characteristic curve (AUC) (*Elith et al., 2011; Eskildsen et al., 2013; Freeman & Moisen, 2008; Guisan et al., 2013*). We used the maximum value of (sensitivity + specificity) as a threshold, in order to minimize the mean of the error rate for both positive and negative observations (*Freeman & Moisen, 2008*). This is equivalent to maximizing (sensitivity + specificity – 1), otherwise known as the true skill statistic (TSS) (*Freeman & Moisen, 2008*).

Species' range shift and turnover

We used four indicators to illustrate changes in amphibian distribution under climate change scenarios: (1) area change (AC); (2) altitude change; (3) latitude change; and (4) longitude change. Area is the number of grid cells occupied by the species and AC is the area of a species' distribution in the future (A_f) minus its current area (A_c), divided by its current area: $AC = (A_f - A_c) / A_c \times 100\%$. We then calculated the distribution space loss (DSL): $DSL = (DS_c - DS_{f_c}) / DS_c \times 100\%$, new distribution space (NDS): $NDS = (DS_f - DS_{f_c}) / DS_f \times 100\%$, here DSL represents the proportional decrease in original distribution area under climate change; DS_c is the distribution space under current

climatic scenarios; DS_f is the distribution space under future climatic scenarios; DS_{fc} is the overlapped distribution space between future and current climatic scenarios; and NDS represents the proportion of new distribution area in future distribution under climate change.

To evaluate overall changes in amphibian diversity and distribution in China we calculated species turnover sum (TS) and turnover ratio (TR) in each grid cell within the potential geographical range shifts for all species. TS was calculated as the total number of newly occurring species (NC) and extinct species (NE) in a given grid cell: $TS = NC + NE$. TR was calculated as TS divided by the sum of current species in each grid cell (NT) and NC : $TR = TS / (NT + NC) \times 100\%$ (Peterson et al., 2002). In order to choose some significant areas under future change, we artificially set these significant areas had higher TR and TS , and their numbers were suitable (5~10). By comparing their different combinations of thresholds of TR and TS , we used the one-half of its maximum value as the criterion (with $TR > 50\%$ and $TS > 20$).

Fragmentation

We studied the fragmentation of species distributions according to methods for calculating habitat fragmentation. We used SDMTools (VanDerWal et al., 2014) to generate patch information from a raster map. To measure species fragmentation we used the coherence index (Jaeger, 2000). The coherence index (CI) is a measure of the probability that two animals placed in different patch areas find each other (Jaeger, 2000). The CI is calculated as: $CI = \sum_{i=1}^n \left(\frac{A_i}{A_t} \right)^2$, where n is the number of patches; A_i is the size of i -th patch; and A_t is the total area of the species distribution. An increase in the CI means distribution fragmentation decreases (Jaeger, 2000). We chose the CI as our measure and not conventional fragmentation (Cerezo, Perelman & Robbins, 2010) because of (1) its low sensitivity to very small patches as opposed to mean patch size; (2) the monotony of its reaction to different fragmentation phases; and (3) its ability to distinguish spatial patterns.

RESULTS

MaxEnt shows great predictive performance for all distributions under the baseline scenario, with high values for AUC (> 0.8). The 134 amphibians show varying sensitivities to future climate change and most species have large changes in RCP8.5 in the 2070s (Figs. 1, S1 and S2).

The suitable habitat of the majority of species (92.5% in the 2050s, and 91.8% in the 2070s) will move northwards (mean latitude increased), with a mean latitude shift of 0.60° by the 2050s and 0.83° by the 2070s (Fig. 2A). The suitable habitat of the majority of species (76.9% in the 2050s, and 84.3% in the 2070s) will move westwards (mean longitude will decrease) across all future scenarios ranging from 0.03 – 4.51° (mean 1.35°) in the 2050s, and from 0.03 – 6.87° (mean 1.72°) in the 2070s. The number of species with the furthest longitudinal movement (more than 0.5° and more than 1°) are 75 and 56 in the 2050s, respectively, and 84 and 68 in the 2070s (Fig. 2B). Virtually all species

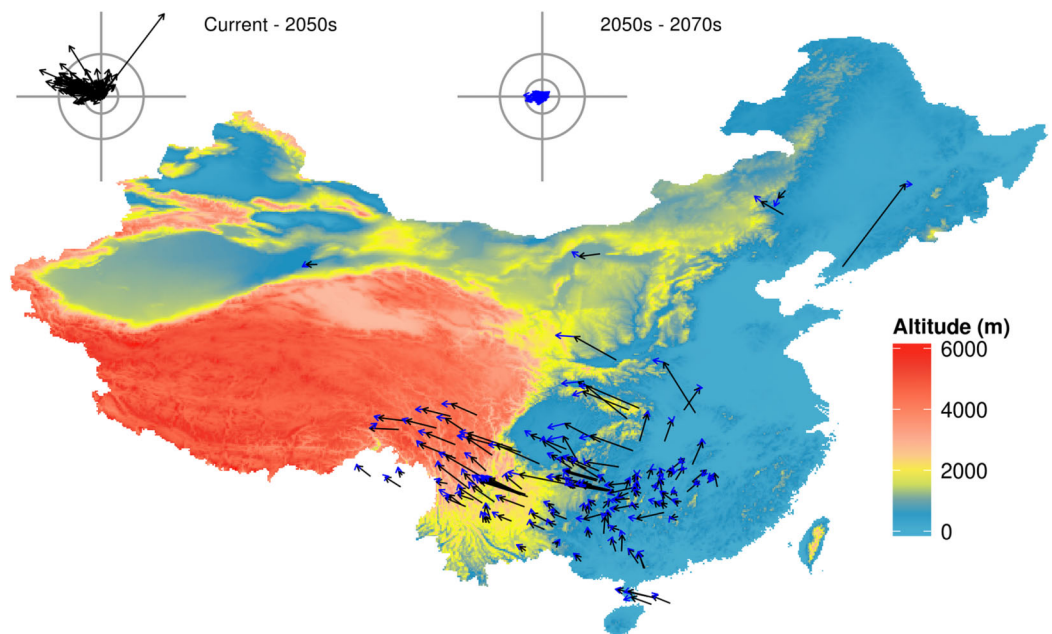


Figure 1 Predicted species movement in a climate scenario, using the BC45 scenario as an example. The arrow represents the distance and direction of species geometric mean point at different periods. The black arrow presents climatic scenario of the 2050s, blue arrow presents climatic scenario of the 2050s–2070s. The wind roses summarize the distance and direction of shift for each species. The radiuses of rings on each wind rose represent geographical distance (inner circus: 2°; outer circus: 5°). The grey axis bars on wind roses represent a length of 7°. BC45 scenario represents BCC-CSM1-1 as AOGCM and using RCP4.5 as greenhouse gas scenarios. The figure was generated using R (<http://www.R-project.org/>), ggplot2 (<https://cran.r-project.org/web/packages/ggplot2/index.html>) and raster (<http://CRAN.R-project.org/package=raster>) softwares, and the map was created using data downloaded from the GADM database (<http://www.gadm.org/>) for free use.

(95.5% in the 2050s, and 97.0% in the 2070s) will move to higher altitudes under climate change (from currently 137–4,124 m to 286–4,396 m in the 2050s or 314–4,448 m in the 2070s), with a mean range shift of 287.2 m by the 2050s and 387.8 m by the 2070s (Fig. 2C).

Area change will vary from –52.8–324.5% by the 2050s and from –57.6–418.1% by the 2070s. The 70.9% of species in the 2050s (38.1% for area contraction and 32.8% for area expansion) and 75.4% of species in the 2070s (37.3% for area contraction and 38.1% for area expansion) will undergo a significant change in distribution of greater than 10% (Fig. 2D). Among these species, three and six species in the 2050s, and 13 and 11 species in the 2070s will respectively show substantial area contraction (greater than 50%) and expansion (greater than 50%) (Fig. 2D).

By the 2050s, the mean value of DSL will be 20.7%, and nine species will lose more than 50% of their original distribution space; by the 2070s, the mean value of DSL will be 23.9%, and 22 species will lose more than 50% of their original distribution space (Fig. 2E). By the 2050s, the mean value of the NDS ratio for amphibians will be 15.9%, and three species will have a NDS greater than 50%; by the 2070s the mean value of the NDS ratio will be 21.1%, and five species will have a NDS greater than 50% (Fig. 2F).

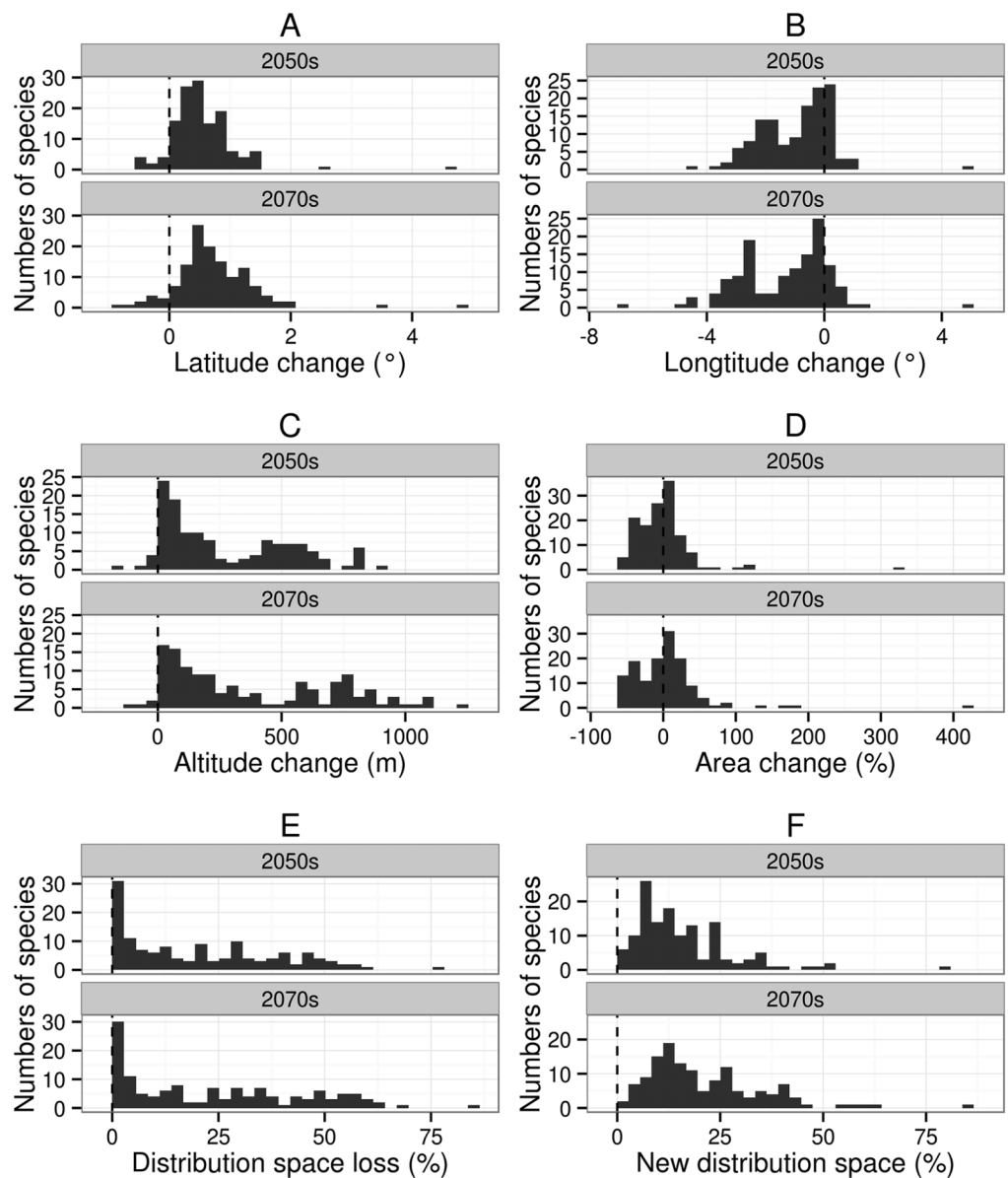


Figure 2 Distribution patterns of 134 species of amphibians from different aspects. Sub-graph (A) present latitude change of 134 kinds of amphibians. (B) present longitude change. (C) present altitude change. (D) present area change percent. (E) present distribution space loss percent. (F) new distribution space percent.

Area change and area change ratio were correlated with changes in latitude, longitude and altitude (Table 1). In other words, under climate change, suitable habitat of amphibians that move westwards, southwards and to higher altitudes will undergo overall range contraction.

For species undergoing declines in distribution, the mean value of coherent index (*CI*) change will be -16.2% for the 2050s and -19.6% for the 2070s; for species undergoing increases in distribution, the mean value of *CI* change will be 5.9% for the 2050s and 6.6% for the 2070s. Under climate change, species with higher area change (decrease or increase) will have higher *CI* changes (Fig. 3).

Table 1 Correlation coefficients between parameters.

	2050s		2070s	
	Area change	Area change ratio (%)	Area change	Area change ratio (%)
Current area	0.363***	0.108	0.358***	0.069
Current latitude	0.058	0.135	0.049	0.118
Current longitude	0.053	0.226**	0.060	0.220*
Current altitude	-0.074	-0.146	-0.084	-0.144
Latitude change	0.28**	0.516***	0.355***	0.524***
Longitude change	0.340***	0.477***	0.371***	0.464***
Altitude change	-0.405***	-0.374***	-0.432***	-0.373***
New distribution area	-0.027	-0.116	-0.016	-0.123
Distribution area loss	-0.011	-0.074	-0.012	-0.072
Change of coherence index	0.656***	0.517***	0.624***	0.534***

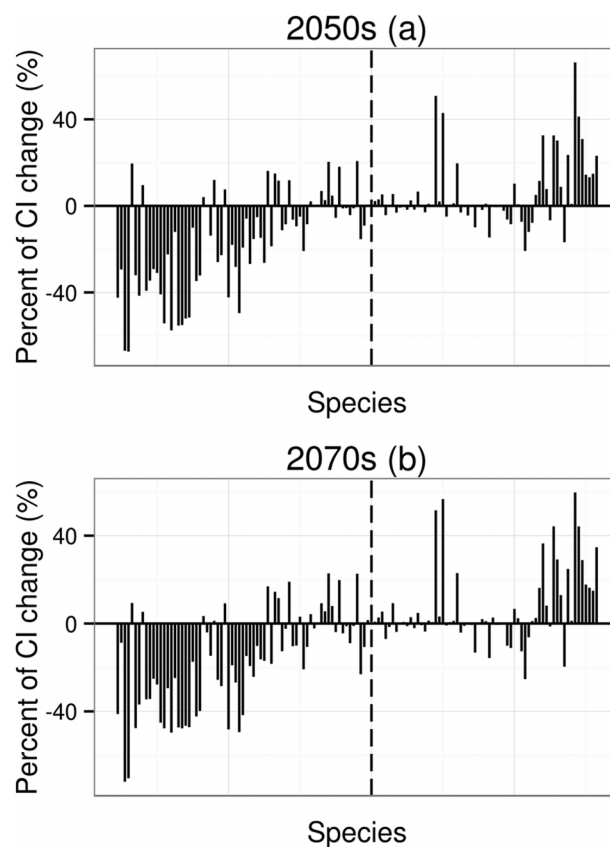
Notes:* $P < 0.05$.** $P < 0.01$.*** $P < 0.001$.

Figure 3 Percent of coherence index (CI) change. CI is the probability that two animals placed in different areas (patches) will find each other. The order of 134 species in X axis from left to right depends on the order of mean value of area change (from low to high, to make thing to be comparable, the 2070s using the order of the 2050s). The dotted line means that the potential distribution area has no any change under future climatic change.

Different regions have different *TR* and *TS* (Fig. 4). Areas with the highest *TR* are located in Northwest China where amphibian species richness is lower. Areas with high *TS* are located in Central and Southern China and these areas were inconsistent with areas of high *TR*. According to our combining indicator (with $TR > 50\%$ and $TS > 20$) (one-half of its maximum value as the criterion), climate strongly influenced amphibian distributions in five regions: the Qinling Mountains, Wuyi Mountains, Dabie Mountains, Sichuan Basin and surrounding areas, and western Guizhou province (Fig. 4).

DISCUSSION

Climatic shifts to warmer and drier regimes can have profound effects on the distribution of amphibians (Araújo, Thuiller & Pearson, 2006). In accordance to this, our results show that Chinese amphibians would exhibit a variety of climate-driven range shifts and as expected we detected the greatest change in amphibian distribution under RCP8.5 and by the 2070s.

Effects of climate change on the direction of movement

The average temperature of the earth's surface will rise by up to 6.4 °C by 2100, and species would thus need to migrate to higher latitudes and/or elevations following their climatic requirements (Pearson & Dawson, 2003; Raxworthy et al., 2008). When temperature undergoes one degree change, elevation needs to change 100–200 m and latitude about 0.5° (about 55 km of polar movement, though latitude has a complex and variable relationship with temperature) (Peterson & Vose, 1997). Our study confirmed these general trends and that under climate warming the suitable habitat of Chinese amphibians will predominantly migrate to higher altitudes and latitudes, which has the same movement direction reported for amphibians in other regions (Mokhatla, Rödder & Measey, 2015; Cunningham et al., 2016). For example, Araújo, Thuiller & Pearson (2006) suggest that, a great proportion of the 108 herpetofaunal species (42 amphibians and 66 reptiles) in Europe would expand their distribution northward by 2050. Forero-Medina, Joppa & Pimm (2011) project that 46 amphibian species on a tropical mountain will shift to higher elevations under future climate changes, and they further document that higher elevation habitats will be more isolated than previously, where is unlikely to sustain their survival and reproduction. However, the direction and speed of migration depend on the climate scenario and species modelled.

Also, our analysis showed that the majority of amphibians will move westwards. This result contradicts other studies where no trend in longitudinal displacement was found (Peterson et al., 2002). However, the longitudinal trend observed in China is plausible given that the terrain of the country is high in the west and low in the east (amphibians will move to higher altitudes under climate warming), and that East China is adjacent to the sea without space for amphibians to migrate.

Organisms often show species-specific environmental requirements and global climate change has different effects on the ranges of different species. For example, Lawler et al. (2010) predict that amphibian species in several areas in Central and western South America would experience high species turnover and would experience larger range

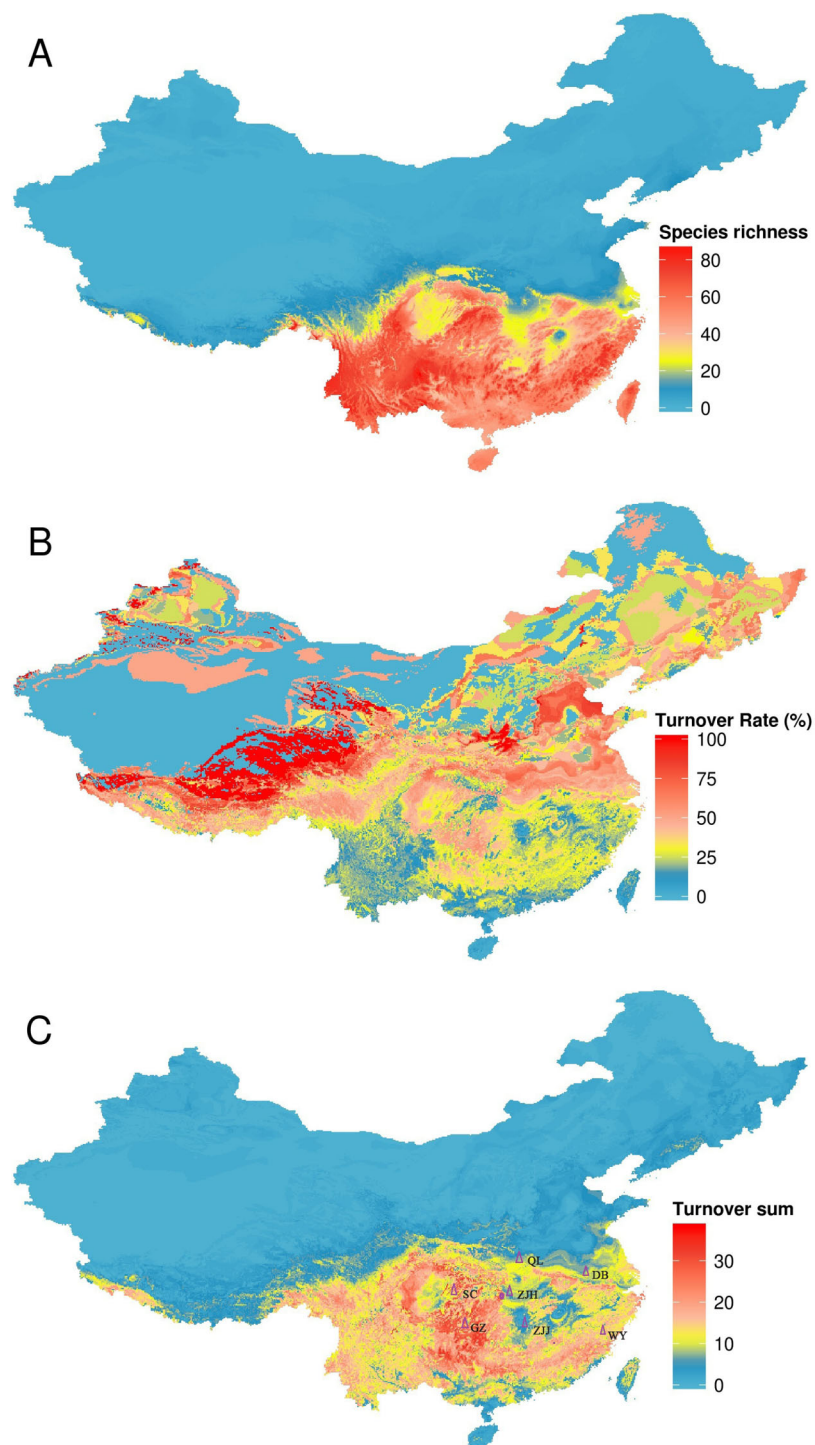


Figure 4 Turnover of species under climate change, using the BC45 scenario in the 2070s as example. (A) species richness in current; (B) turnover rate; (C) turnover sum of 134 species. The figure was generated using R (<http://www.R-project.org/>), ggplot2 (<https://cran.r-project.org/web/packages/ggplot2/index.html>) and raster (<http://CRAN.R-project.org/package=raster>) softwares, and the map was created using data downloaded from the GADM database (<http://www.gadm.org/>) for free use. QL, Qinling Mountains; DB, Dabie Mountains; SC, Sichuan Basin and surrounding areas; GZ, western Guizhou province; WY, Wuyi Mountains; ZJJ, Zhangjiajie Nature Reserve; ZJH, Zhongjianhe Nature Reserve.

contractions by 2071. *Li et al. (2013)* assess the vulnerability of 208 endemic or endangered species (including 13 amphibians) in China and predict that climate-induced shifts in ranges will lead 50% of species to undergo range reduction another half to increase range. *Foden et al. (2013)* document that 11–15% of amphibians, 6–9% of birds and 6–9% of coral species are highly vulnerable to climate change. Our study confirmed that the responses of amphibians to future climate change are complex: some species will undergo distribution reduction, whereas others will expand their ranges. Following our results, amphibians that move westwards (drier habitats), southwards (warmer habitats) and to higher altitudes will undergo distribution reduction. The main reason may be that compared with the original habitats of amphibians, there are fewer suitable habitats in the west and south parts of China where there are many mountains.

Effects of climate change on fragmentation

Our study shows that under climate warming an increase in fragmentation (lower *CI*) will decrease distribution areas and increase the rate of extinction. Fragmentation can reduce population size and habitat connectivity, interfere with gene interchange, and reduce migration rates and resilience (*Chen & Bi, 2007; Sarmiento Cabral et al., 2013*), thus negatively affecting the long-term viability of threatened and endangered amphibians (*Opdam & Wascher, 2004*).

Further, our study shows that the lost habitat for some species is not at the edge of distributions but mainly in the core (central) region of their ranges (*Fig. S3*). The core distribution region is very important for a species because it acts as a hub that connects patches, allowing the genetic exchange between different populations. Habitat loss and fragmentation have been identified as one of the major causes of amphibian decline globally (*Stuart et al., 2004*). Our study shows that future climate change might not only reduce the range of some amphibians, but also make it more fragmented. This finding is similar to that reported for amphibians in other regions (*Mokhatla, Rödder & Measey, 2015*). The observed synergic effect would accelerate the decline and/or local extinction of certain amphibians (e.g. *Amolops ricketti, Pachytriton labiatus* and *Megophrys minor*). On the other hand, species predicted to undergo area expansion such as *Hynobius leechii, Hylarana macrodactyla* and *Fejervarya multistriata* were not affected by fragmentation, which would benefit them and allow them to expand more easily.

Species turnover and high impact areas

The identification of critical habitats for amphibian protection under climate change is important for making robust conservation management decisions (*Guisan et al., 2013*). Areas of high species turnover may be sites with largest shifts in population. Many studies conduct turnover assessments using turnover ratios (*Erasmus et al., 2002; Peterson et al., 2002*), however our results revealed that areas with high turnover ratios were not the same as areas with high turnover sums. This is because an area with a low turnover sum can have a high turnover ratio if the area has a very low species richness under the current climate (e.g. northwestern China). We considered grid cells with turnover ratios greater than 50% and turnover sums greater than 20 as areas of

potentially large future shifts in amphibians. We found several such areas including the Sichuan Basin and surrounding areas, the Qinling Mountains, the Dabie Mountains, the Wuyi Mountains and western Guizhou, and hypothesize that these regions may see major shifts in amphibians as a result of the combined action of several factors. First, the Sichuan Basin and surrounding areas, western Guizhou province and Dabie Mountains are located in an area of transition from the northern subtropics to warm temperate climate; there are relatively large climatic gradients in these areas (Xie *et al.*, 2007). Second, these five areas contain the boundaries of many species' distributions (Fei *et al.*, 2009); areas containing many range limits are expected to experience greater turnover than those containing few range limits. Third, mountainous regions, such as the Qinling Mountains form a natural (north or south) boundary for many species and so may experience significant faunal change. Under climate change, habitat loss, especially that resulting from changes to freshwater ecosystems, is the greatest risk to amphibians (Solomon, 2007).

Conservation implications

We found overlapping key amphibian regions, such as important endemic amphibian regionalization (e.g. Sichuan and Guizhou provinces) and global biodiversity hotspots (e.g. Sichuan) (Chen & Bi, 2007). Nature reserves provide the most effective approach for biodiversity conservation, especially for the in situ conservation of wildlife and natural ecosystems (D'Amen *et al.*, 2011). Distribution shift, habitat loss and fragmentation caused by climatic change are the potential threats to amphibians in China, and the current network of natural reserves does not include some key regions for amphibians. In addition, many existing nature reserves have not sufficient to prevent amphibians from declining from threats of climatic change because their conservation objects and policies are not for amphibians, though they have a key role in protect amphibians. We should protect the amphibians under the climate change with the following strategies. First, we need to develop a conservation plan to establish a network of national reserves covering populations of all threatened amphibian species in China. Second, we need to implement conservation action plans in all currently existing reserves to maintain viable populations and protect the habits for some vulnerable species with high habit loss (e.g. *Odorrana hainanensis*, *Cynops cyanurus*, *Bombina fortinuptialis*, *Rhacophorus dennysi*, *Rana amurensis*, *Tylototriton asperrimus*, *Pelophylax hubeiensis* and *Bufo melanostictus*) and local extinction of certain amphibians for fragmentation (e.g. *Amolops ricketti*, *Pachytriton labiatus* and *Megophrys minor*). Third, we need to develop some engineering strategies to increase shelters and canopy cover and install irrigation to maintain water potentials in wetland and upland habitats (Li, Cohen & Rohr, 2013).

Methodological limitations

Our models assume that only climatic variables affect species range, and that all species have the potential to migrate to areas climatically suitable for them. Many important factors such as vegetation canopy, land use, movement barriers, mountain topography and biological characteristics of focal species were not taken into account. Our results

therefore simplify the real effects of climate change because amphibians in nature are affected by numerous biotic and abiotic factors (*Gotelli, Graves & Rahbek, 2010; Nakazawa, 2013; Trisurat, Kanchanasaka & Kreft, 2015*). However, this simple picture does provide useful information on the potential effects of future climate change on Chinese amphibians, and their possible trends of migration. Our study is the first to investigate how Chinese amphibians would respond to future climate change.

ACKNOWLEDGEMENTS

We would like to thank Xiao-Li Fan, Liang Fei, Jian-Ping Jiang and Zhi-Hua Lin for help with confirming distribution and diversity of amphibians in China.

ADDITIONAL INFORMATION AND DECLARATIONS

Funding

This work was supported by grants from the National Natural Science Foundation of China (31300342 and 31570417), Anhui Provincial National Science Foundation (1608085MC63), Priority Academic Program Development of Jiangsu Higher Education Institutions and Chinese Postdoctoral Science Foundation (2014M561683). SV is supported by a postdoctoral contract at Universidad de Alcalá in Madrid, Spain. The funders had no role in study design, data collection and analysis, decision to publish, or preparation of the manuscript.

Grant Disclosures

The following grant information was disclosed by the authors:

National Natural Science Foundation of China: 31300342 and 31570417.

Anhui Provincial National Science Foundation: 1608085MC63.

Priority Academic Program Development of Jiangsu Higher Education Institutions and Chinese Postdoctoral Science Foundation: 2014M561683.

Competing Interests

Sara Varela is an Academic Editor for PeerJ.

Author Contributions

- Ren-Yan Duan conceived and designed the experiments, performed the experiments, analyzed the data, contributed reagents/materials/analysis tools, wrote the paper, prepared figures and/or tables, reviewed drafts of the paper.
- Xiao-Quan Kong conceived and designed the experiments, performed the experiments, analyzed the data, wrote the paper, prepared figures and/or tables, reviewed drafts of the paper.
- Min-Yi Huang conceived and designed the experiments, performed the experiments, prepared figures and/or tables, reviewed drafts of the paper.
- Sara Varela analyzed the data, reviewed drafts of the paper.
- Xiang Ji conceived and designed the experiments, contributed reagents/materials/analysis tools, wrote the paper, reviewed drafts of the paper.

Data Deposition

The following information was supplied regarding data availability:

The raw data has been supplied as [Supplemental Dataset Files](#).

Supplemental Information

Supplemental information for this article can be found online at <http://dx.doi.org/10.7717/peerj.2185#supplemental-information>.

REFERENCES

- Araújo MB, Thuiller W, Pearson RG. 2006.** Climate warming and the decline of amphibians and reptiles in Europe. *Journal of Biogeography* **33**(10):1712–1728
DOI [10.1111/j.1365-2699.2006.01482.x](https://doi.org/10.1111/j.1365-2699.2006.01482.x).
- Cerezo A, Perelman S, Robbins CS. 2010.** Landscape-level impact of tropical forest loss and fragmentation on bird occurrence in eastern Guatemala. *Ecological Modelling* **221**(3):512–526
DOI [10.1016/j.ecolmodel.2009.10.038](https://doi.org/10.1016/j.ecolmodel.2009.10.038).
- Chen Y, Bi J. 2007.** Biogeography and hotspots of amphibian species of China: implications to reserve selection and conservation. *Current Science* **92**(4):480–489.
- Collevatti RG, Terribile LC, de Oliveira G, Lima-Ribeiro MS, Nabout JC, Rangel TF, Diniz-Filho JAF. 2013.** Drawbacks to palaeodistribution modelling: the case of South American seasonally dry forests. *Journal of Biogeography* **40**(2):345–358 DOI [10.1111/jbi.12005](https://doi.org/10.1111/jbi.12005).
- Cunningham HR, Rissler LJ, Buckley LB, Urban MC. 2016.** Abiotic and biotic constraints across reptile and amphibian ranges. *Ecography* **39**(1):1–8 DOI [10.1111/ecog.01369](https://doi.org/10.1111/ecog.01369).
- D'Amen M, Bombi P, Pearman PB, Schmatz DR, Zimmermann NE, Bologna MA. 2011.** Will climate change reduce the efficacy of protected areas for amphibian conservation in Italy? *Biological Conservation* **144**(3):989–997 DOI [10.1016/j.biocon.2010.11.004](https://doi.org/10.1016/j.biocon.2010.11.004).
- Elith J, Leathwick JR. 2009.** Species distribution models: ecological explanation and prediction across space and time. *Annual Review of Ecology, Evolution, and Systematics* **40**(1):677–697
DOI [10.1146/annurev.ecolsys.110308.120159](https://doi.org/10.1146/annurev.ecolsys.110308.120159).
- Elith J, Phillips SJ, Hastie T, Dudík M, Chee YE, Yates CJ. 2011.** A statistical explanation of MaxEnt for ecologists. *Diversity and Distributions* **17**(1):43–57
DOI [10.1111/j.1472-4642.2010.00725.x](https://doi.org/10.1111/j.1472-4642.2010.00725.x).
- Erasmus BFN, Van Jaarsveld AS, Chown SL, Kshatriya M, Wessels KJ. 2002.** Vulnerability of South African animal taxa to climate change. *Global Change Biology* **8**(7):679–693
DOI [10.1046/j.1365-2486.2002.00502.x](https://doi.org/10.1046/j.1365-2486.2002.00502.x).
- Eskildsen A, le Roux PC, Heikkinen RK, Høye TT, Kissling WD, Pöyry J, Wisz MS, Luoto M. 2013.** Testing species distribution models across space and time: high latitude butterflies and recent warming. *Global Ecology and Biogeography* **22**(12):1293–1303 DOI [10.1111/geb.12078](https://doi.org/10.1111/geb.12078).
- Fei L, Hu SQ, Ye CY, Huang YZ. 2009.** *Fauna Sinica Amphibia Vol. 3 (Anura Ranidae)*. Beijing: Science Press.
- Feng X, Lau MWN, Stuart SN, Chanson JS, Cox NA, Fischman DL. 2007.** Conservation needs of amphibians in China: a review. *Science in China Series C: Life Sciences* **50**(2):265–276
DOI [10.1007/s11427-007-0021-5](https://doi.org/10.1007/s11427-007-0021-5).
- Ficetola GF, Rondinini C, Bonardi A, Baisero D, Padoa-Schioppa E. 2015.** Habitat availability for amphibians and extinction threat: a global analysis. *Diversity and Distributions* **21**(3):302–311
DOI [10.1111/ddi.12296](https://doi.org/10.1111/ddi.12296).

- Foden WB, Butchart SHM, Stuart SN, Vié J-C, Akçakaya HR, Angulo A, DeVantier LM, Gutsche A, Turak E, Cao L, Donner SD, Katariya V, Bernard R, Holland RA, Hughes AF, O'Hanlon SE, Garnett ST, Şekercioğlu ÇH, Mace GM. 2013. Identifying the world's most climate change vulnerable species: a systematic trait-based assessment of all birds, amphibians and corals. *PLoS ONE* 8(6):e65427 DOI 10.1371/journal.pone.0065427.
- Forero-Medina G, Joppa L, Pimm SL. 2011. Constraints to species' elevational range shifts as climate changes. *Conservation Biology* 25(1):163–171 DOI 10.1111/j.1523-1739.2010.01572.x.
- Freeman EA, Moisen GG. 2008. A comparison of the performance of threshold criteria for binary classification in terms of predicted prevalence and kappa. *Ecological Modelling* 217(1–2):48–58 DOI 10.1016/j.ecolmodel.2008.05.015.
- Gotelli NJ, Graves GR, Rahbek C. 2010. Macroecological signals of species interactions in the Danish avifauna. *Proceedings of the National Academy of Sciences of the United States of America* 107(11):5030–5035 DOI 10.1073/pnas.0914089107.
- Guisan A, Tingley R, Baumgartner JB, Naujokaitis-Lewis I, Sutcliffe PR, Tulloch AIT, Regan TJ, Brotons L, McDonald-Madden E, Mantyka-Pringle C, Martin TG, Rhodes JR, Maggini R, Setterfield SA, Elith J, Schwartz MW, Wintle BA, Broennimann O, Austin M, Ferrier S, Kearney MR, Possingham HP, Buckley YM. 2013. Predicting species distributions for conservation decisions. *Ecology Letters* 16(12):1424–1435 DOI 10.1111/ele.12189.
- Hijmans RJ, Phillips S, Leathwick J, Elith J. 2015. Dismo: species distribution modeling, R package version 1.0-5. Available at: <http://CRAN.R-project.org/package=dismo>.
- Hof C, Araújo MB, Jetz W, Rahbek C. 2011. Additive threats from pathogens, climate and land-use change for global amphibian diversity. *Nature* 480(7378):516–519 DOI 10.1038/nature10650.
- IUCN. 2015. Geographic pattern. Gland: IUCN. Available at: <http://www.iucnredlist.org/initiatives/amphibians/analysis/geographic-patterns#diversity>.
- Jaeger JAG. 2000. Landscape division, splitting index, and effective mesh size: new measures of landscape fragmentation. *Landscape Ecology* 15(2):115–130 DOI 10.1023/A:1008129329289.
- Lawler JJ, White D, Neilson RP, Blaustein AR. 2006. Predicting climate-induced range shifts: model differences and model reliability. *Global Change Biology* 12(8):1568–1584 DOI 10.1111/j.1365-2486.2006.01191.x.
- Lawler JJ, Shafer SL, Bancroft BA, Blaustein AR. 2010. Projected climate impacts for the amphibians of the Western Hemisphere. *Conservation Biology* 24(1):38–50 DOI 10.1111/j.1523-1739.2009.01403.x.
- Li X, Tian H, Wang Y, Li R, Song Z, Zhang F, Xu M, Li D. 2013. Vulnerability of 208 endemic or endangered species in China to the effects of climate change. *Regional Environmental Change* 13(4):843–852 DOI 10.1007/s10113-012-0344-z.
- Li Y, Cohen JM, Rohr JR. 2013. Review and synthesis of the effects of climate change on amphibians. *Integrative Zoology* 8(2):145–161 DOI 10.1111/1749-4877.12001.
- Malcolm JR, Liu C, Neilson RP, Hansen L, Hannah L. 2006. Global warming and extinctions of endemic species from biodiversity hotspots. *Conservation Biology* 20(2):538–548 DOI 10.1111/j.1523-1739.2006.00364.x.
- Mokhatla MM, Rödder D, Measey GJ. 2015. Assessing the effects of climate change on distributions of Cape Floristic Region amphibians. *South African Journal of Science* 111(11/12):1–7 DOI 10.17159/sajs.2015/20140389.
- Munguía M, Rahbek C, Rangel TF, Diniz-Filho JAF, Araújo MB. 2012. Equilibrium of global amphibian species distributions with climate. *PLoS ONE* 7(4):e34420 DOI 10.1371/journal.pone.0034420.

- Nakazawa Y. 2013.** Niche breadth, environmental landscape, and physical barriers: their importance as determinants of species distributions. *Biological Journal of the Linnean Society* **108**(2):241–250 DOI [10.1111/j.1095-8312.2012.02018.x](https://doi.org/10.1111/j.1095-8312.2012.02018.x).
- Ochoa-Ochoa LM, Rodríguez P, Mora F, Flores-Villela O, Whittaker RJ. 2012.** Climate change and amphibian diversity patterns in Mexico. *Biological Conservation* **150**(1):94–102 DOI [10.1016/j.biocon.2012.03.010](https://doi.org/10.1016/j.biocon.2012.03.010).
- Opdam P, Wascher D. 2004.** Climate change meets habitat fragmentation: linking landscape and biogeographical scale levels in research and conservation. *Biological Conservation* **117**(3):285–297 DOI [10.1016/j.biocon.2003.12.008](https://doi.org/10.1016/j.biocon.2003.12.008).
- Pearson RG, Dawson TP. 2003.** Predicting the impacts of climate change on the distribution of species: are bioclimate envelope models useful? *Global Ecology and Biogeography* **12**(5):361–371 DOI [10.1046/j.1466-822X.2003.00042.x](https://doi.org/10.1046/j.1466-822X.2003.00042.x).
- Peterson AT, Ortega-Huerta MA, Bartley J, Sánchez-Cordero V, Soberón J, Buddemeier RH, Stockwell DRB. 2002.** Future projections for Mexican faunas under global climate change scenarios. *Nature* **416**(6881):626–629 DOI [10.1038/416626a](https://doi.org/10.1038/416626a).
- Peterson TC, Vose RS. 1997.** An overview of the global historical climatology network temperature database. *Bulletin of the American Meteorological Society* **78**(12):2837–2849 DOI [10.1175/1520-0477\(1997\)078<2837:AOOTGH>2.0.CO;2](https://doi.org/10.1175/1520-0477(1997)078<2837:AOOTGH>2.0.CO;2).
- Phillips SJ, Anderson RP, Schapire RE. 2006.** Maximum entropy modeling of species geographic distributions. *Ecological Modelling* **190**(3–4):231–259 DOI [10.1016/j.ecolmodel.2005.03.026](https://doi.org/10.1016/j.ecolmodel.2005.03.026).
- Pounds JA, Bustamante MR, Coloma LA, Consuegra JA, Fogden MPL, Foster PN, La Marca E, Masters KL, Merino-Viteri A, Puschendorf R, Ron SR, Sánchez-Azofeifa GA, Still CJ, Young BE. 2006.** Widespread amphibian extinctions from epidemic disease driven by global warming. *Nature* **439**(7073):161–167 DOI [10.1038/nature04246](https://doi.org/10.1038/nature04246).
- R Development Core Team. 2013.** *R: A Language and Environment for Statistical Computing*. Vienna: R Foundation for Statistical Computing. Available at: <http://www.r-project.org>.
- Raxworthy CJ, Pearson RG, Rabibisoa N, Rakotondrazafy AM, Ramanamanjato J-B, Raselimanana AP, Wu S, Nussbaum RA, Stone DA. 2008.** Extinction vulnerability of tropical montane endemism from warming and upslope displacement: a preliminary appraisal for the highest massif in Madagascar. *Global Change Biology* **14**(8):1703–1720 DOI [10.1111/j.1365-2486.2008.01596.x](https://doi.org/10.1111/j.1365-2486.2008.01596.x).
- Sarmiento Cabral J, Jeltsch F, Thuiller W, Higgins S, Midgley GF, Rebelo AG, Rouget M, Schurr FM. 2013.** Impacts of past habitat loss and future climate change on the range dynamics of South African Proteaceae. *Diversity and Distributions* **19**(4):363–376 DOI [10.1111/ddi.12011](https://doi.org/10.1111/ddi.12011).
- Solomon S. 2007.** *Climate Change 2007–The Physical Science Basis: Working Group I Contribution to the Fourth Assessment Report of the IPCC*. Cambridge: Cambridge University Press.
- Stuart SN, Chanson JS, Cox NA, Young BE, Rodrigues ASL, Fischman DL, Waller RW. 2004.** Status and trends of amphibian declines and extinctions worldwide. *Science* **306**(5702):1783–1786 DOI [10.1126/science.1103538](https://doi.org/10.1126/science.1103538).
- Trisurat Y, Kanchanasaka B, Kreft H. 2015.** Assessing potential effects of land use and climate change on mammal distributions in northern Thailand. *Wildlife Research* **41**(6):522–536 DOI [10.1071/WR14171](https://doi.org/10.1071/WR14171).
- VanDerWal J, Falconi L, Januchowski S, Shoo L, Storlie C. 2014.** SDMTTools: species distribution modelling tools: tools for processing data associated with species distribution modelling exercises. Available at: <http://cran.r-project.org/web/packages/SDMTTools/SDMTTools.pdf>.

- Varela S, Anderson RP, García-Valdés R, Fernández-González F. 2014.** Environmental filters reduce the effects of sampling bias and improve predictions of ecological niche models. *Ecography* **37**(11):1084–1091 DOI [10.1111/j.1600-0587.2013.00441.x](https://doi.org/10.1111/j.1600-0587.2013.00441.x).
- Varela S, Lima-Ribeiro MS, Terribile LC. 2015.** A short guide to the climatic variables of the last glacial maximum for biogeographers. *PLoS ONE* **10**(6):e129037 DOI [10.1371/journal.pone.0129037](https://doi.org/10.1371/journal.pone.0129037).
- Wayne GP. 2013.** The beginner's guide to representative concentration pathways. Available at: <https://www.skepticalscience.com/rcp.php>.
- Zhang M-G, Zhou Z-K, Chen W-Y, Slik JWF, Cannon CH, Raes N. 2012.** Using species distribution modeling to improve conservation and land use planning of Yunnan, China. *Biological Conservation* **153**:257–264 DOI [10.1016/j.biocon.2012.04.023](https://doi.org/10.1016/j.biocon.2012.04.023).