

RESEARCH ARTICLE

Open Access

An investigation into the ameliorating effect of black soybean extract on learning and memory impairment with assessment of neuroprotective effects

Ji Hee Jeong¹, Hyeon Ju Kim¹, Seon Kyeong Park¹, Dong Eun Jin¹, O-Jun Kwon², Hyun-Jin Kim¹ and Ho Jin Heo^{1*}

Abstract

Background: The physiological effects of the non-anthocyanin fraction (NAF) in a black soybean seed coat extract on A β -induced oxidative stress were investigated to confirm neuroprotection. In addition, we examined the preventive effect of NAF on cognitive defects induced by the intracerebroventricular (ICV) injection of A β .

Methods: Levels of cellular oxidative stress were measured using 2',7'-dichlorofluorescein diacetate (DCF-DA). Neuronal cell viability was investigated by 3-(4,5-dimethylthiazol-2-yl)-2,5-diphenyltetrazolium bromide (MTT) and lactate dehydrogenase (LDH) assay. To investigate in vivo anti-amnesic effects of NAF by using Y-maze and passive avoidance tests, the learning and memory impairment in mice was induced by A β . After in vivo assays, acetylcholinesterase (AChE) activity and level of malondialdehyde (MDA) in the mouse brain were determined to confirm the cognitive effect. Individual phenolics of NAF were qualitatively analyzed by using an ultra-performance liquid chromatography (UPLC) Accurate-Mass Quadrupole Time-of-Flight (Q-TOF) UPLC/MS.

Results: A NAF showed cell protective effects against oxidative stress-induced cytotoxicity. Intracellular ROS accumulated through A β ₁₋₄₀ treatment was significantly reduced in comparison to cells only treated with A β ₁₋₄₀. In MTT and LDH assay, the NAF also presented neuroprotective effects on A β ₁₋₄₀-treated cytotoxicity. Finally, the administration of this NAF in mice significantly reversed the A β ₁₋₄₀-induced cognitive defects in in vivo behavioral tests. After behavioral tests, the mice brains were collected in order to examine lipid peroxidation and AChE activity. AChE, preparation was inhibited by NAF in a dose-dependent manner. MDA generation in the brain homogenate of mice treated with the NAF was decreased. Q-TOF UPLC/MS analyses revealed three major phenolics from the non-anthocyanin fraction; epicatechin, procyanidin B1, and procyanidin B2.

Conclusions: The results suggest that the NAF in black soybean seed coat extracts may improve the cytotoxicity of A β in PC12 cells, possibly by reducing oxidative stress, and also have an anti-amnesic effect on the in vivo learning and memory deficits caused by A β . Q-TOF UPLC/MS analyses showed three major phenolics; (-)-epicatechin, procyanidin B1, and procyanidin B2. Above results suggest that (-)-epicatechins are the major components, and contributors to the anti-amnesic effect of the NAF from black soybean seed coat.

Keywords: Amyloid beta protein, Black soybean, Cognition, Epicatechin, PC12 cell

* Correspondence: hjher@gnu.ac.kr

¹Division of Applied Life Science, Institute of Agriculture and Life Science, Gyeongsang National University, Jinju 660-701, South Korea
Full list of author information is available at the end of the article

Background

Black soybeans (*Glycine max* L. Merr.) have been consumed as a medicinal or functional food in Korea, China, and Japan for thousands of years [1]. Recent advances in antioxidant research show that black soybeans possess a strong inhibitory effect against in vitro low density lipoprotein oxidation [2]; stronger 2-diphenyl-1-picrylhydrazyl (DPPH) radical scavenging activity; ferric-reducing antioxidant power (FRAP); and oxygen radical absorbance capacity (ORAC) than yellow soybeans [3]. The antioxidant effects of black soybeans are related to the phenolic pigments in their seed coats [2]. Black soybeans are also used as a nutraceutical food for kidney disease, blood circulation, oxidative stress, and counteracting toxicity because of their various physiological effects [4]. In addition, the black hull contains various polyphenols such as anthocyanins, procyanidins, and catechins, and the functional properties of their phenolics have been studied [5]. Anthocyanins from the black soybean seed coat have reportedly inhibited the expression of inflammation-related genes [6] and the H₂O₂-induced cell death of rotator cuff tenofibroblasts [7].

Amyloid β peptide (A β) is a major component of senile plaques, and considered to have a causal role in the development and progress of the neurodegenerative aspect of Alzheimer's disease (AD). Although the mechanism of A β -induced neurotoxicity remains ambiguous, collected evidence has suggested that the enhanced oxidative stress evoked by A β is associated with the pathogenesis of AD [8]. Furthermore, it is well established that the production of excessive reactive oxidative species (ROS) could lead to neuronal apoptosis in neurodegenerative disorders, such as A β -induced neuronal apoptosis. Production of neurotoxic A β , primarily A β_{1-40} (A β_{40}) and A β_{1-42} (A β_{42}), and their deposition in insoluble plaques are the major neuropathological hallmarks of AD [9]. A β_{40} constitutes approximately 90% of the most abundant cleaved form of larger amyloid precursor protein (APP) and exhibits a toxic effect on neurons in the AD brain, although A β_{42} is much more prone to aggregation and more toxic to neurons than A β_{40} [10]. In addition, the deposition of A β_{40} is required for the development of mature amyloid plaques from the initial deposition of A β_{42} , an early pathological process of AD. Therefore, similar to A β_{42} , A β_{40} is also often used to generate the rodent model of AD [11].

Only a few studies have performed a comparative analysis that quantifies non-anthocyanins extracted from black soybean seed coat [1]. Furthermore, there is little information available on the possible health benefits of non-anthocyanins that have been extracted from the black soybean seed coat on animal cells that have been exposed to cell-damaging oxidative stress. Therefore, non-anthocyanin fractions were used to evaluate their

neuroprotective effects against A β -induced oxidative stress using rat pheochromocytoma (PC12) cells. The neuron-like PC12 cell is an appropriate in vitro model for the assessment of the neurotoxic effect of A β and is widely used to study molecular mechanisms and to develop neuroprotective agents that reduce neurotoxic symptoms [12]. Behavioral in vivo tests were also performed to elucidate the effect of the NAF against A β -induced neurodegeneration in mice. Therefore, the present study was undertaken to investigate beneficial effects of NAF on A β -induced cognitive dysfunction in neuron like PC 12 cells and mice. Main phenolics of the NAF from black soybean seed coat were qualitatively identified by using Q-TOF UPLC/MS.

Methods

Materials

2',7'-Dichlorofluorescein diacetate (DCF-DA), vitamin C, thiobarbituric acid (TBA), HEPES, sodium bicarbonate, penicillin, amyloid β protein (A β_{1-40}), 3-(4,5-dimethylthiazol-2-yl)-2,5-diphenyltetrazolium bromide (MTT) assay kit, lactated dehydrogenase (LDH) release assay kit, tacrine and all other chemicals used were purchased from Sigma-Aldrich Chemical Co. (St. Louis, MO, USA). The PC12 cell line (rat pheochromocytoma cells) was obtained from the Korea cell line bank (Seoul, Korea). Roswell Park Memorial Institute (RPMI) 1640 medium was purchased from Lonza Walkersville, Inc. (Walkersville, MD, USA). Fetal bovine serum was obtained from Gibco BRL (Grand Island, NY, USA).

Extraction of black soybean

Black soybean was purchased from a local market (Jinju, Korea), in September, 2011, and was authenticated by Institute of Agriculture & Life Sciences, Gyeongsang National University. A voucher specimen was deposited at the Herbarium of the Department of Agronomy, Gyeongsang National University. Black soybean was separated into seed coats and dehulled beans by hand. The phenolics in seed coat were extracted from 10 g of seed coats using 70% acetone (200 mL) by the ultrasound-assisted method [13]. Phenolic extraction of black soybean seed coat was done in three replications. A simple fractionation of black soybean seed coat extracts was performed using preconditioned C₁₈ Sep-Pak cartridges to separate anthocyanin from non-anthocyanin fractions [14], and then stored -20°C prior to use. Most of the non-anthocyanins were eluted in the ethyl acetate fraction, which was named the NAF in this research.

Cell culture

The PC12 cell line was derived from a transplantable rat pheochromocytoma [15]. The cells respond reversibly to nerve growth factor (NGF) by induction of the neuronal phenotype. Cells (KCLB 21721, Korea Cell Line Bank,

Seoul, Korea) were propagated in RPMI 1640 medium containing 10% fetal bovine serum, 50 units/mL penicillin, and 100 µg/mL streptomycin.

Measurement of cellular oxidative stress

Levels of cellular oxidative stress were measured by DCF-DA. PC12 cells were pretreated with various concentrations of the NAF (3, 6, 12, and 25 µg/mL) for 48 h. After 48 h, Aβ and NAF group was treated with the 25 µM Aβ for 2 h. Aβ₁₋₄₀ (0.1 mg) was dissolved in distilled water of 1 mL. At the end of the treatment, cells were incubated in the presence of 50 µM DCF-DA for 50 min. After incubation, dichlorofluorescein (DCF) was quantified using a fluorometer (Infinite F200, TECAN, NC, USA) with a 485 nm excitation filter and a 535 nm emission filter. The results were expressed as percent relative to the oxidative stress level of the control cells, which was set to 100% [16].

Determination of cell viability

MTT reduction assay was determined using the in vitro toxicology assay kit (TOX-1, Sigma-Aldrich chemical Co., St. Louis, MO, USA). Neuronal PC12 cells were plated at a density of 10⁴ cells/well on 96-well plates in 100 µL of RPMI. The cells were pre-incubated with various concentrations of NAF (3, 6, 12, and 25 µg/mL) for 48 h. After 48 h, Aβ and NAF group was treated with the 25 µM Aβ for 3 h. The amount of MTT formazan product was determined by measuring absorbance using a microplate reader (680, Bio-Rad, Tokyo, Japan) at a test wavelength of 570 nm and a reference wavelength of 690 nm [15].

PC12 cells were precipitated by centrifugation at 250 g for 4 min at 4°C, 100 µL of the supernatants was transferred into new wells, and lactate dehydrogenase (LDH) was determined using the in vitro toxicology assay kit (TOX-7, Sigma-Aldrich chemical Co., St. Louis, MO, USA). Damage of neuron like PC12 cell membrane was evaluated by measuring the amount of the intra-cellular enzyme LDH released into the medium [16].

Animals and in vivo experimental design

Institute of Cancer Research (ICR) mice (male, 4 weeks old) were obtained from Samtako (Osan, Korea). The mice were housed two per cage in a room maintained with a 12 h light-dark cycle, 55% humidity and 24 ± 1°C temperature. All animal procedures were approved by the Institutional Animal Care and Use Committee (IACUC) of Gyeongsang National University (certificate: GNU-120409-M0009), and performed in accordance with the Policy of the Ethical Committee of Ministry of Health and Welfare, Korea. Freeze-dried non-anthocyanin fraction from black soybean seed coat extract were administered orally (5, 10, and 20 mg/kg of body weight) once a day for 3 weeks. After 3 weeks, Aβ₁₋₄₀ was administered via

intracerebroventricular (ICV) injection without control group. Negative control group was injected with Aβ₁₋₄₀ only. Aβ was dissolved in 0.85% sodium chloride solution (v/v) and injected intracerebroventricularly into each mouse with a 25 µL Hamilton microsyringe fitted with a 26-gauge needle that was inserted to a depth of 2.5 mm. The injection volume was 5 µL (dose 410 pmol/mouse) [16].

Y-maze test

The Y-maze test was performed 2 days after the Aβ injection. The maze was made of black-painted plastic, and each arm of the maze was 33 cm long, 15 cm high and 10 cm wide, and was positioned at a constant angle. Each mouse was placed at the end of one arm, and allowed to move freely through the maze during an 8 min period. The sequence of arm entries was recorded manually. A spontaneous alternation behavior was defined as entry into all three arms on consecutive choices in overlapping triplet sets. The percentage spontaneous alternation behavior was calculated as the ratio of actual to possible alternations (defined as the total number of arm entries minus two), multiplied by 100 [16].

Passive avoidance test

A shuttle box was divided into two chambers, one illuminated and one dark, and separated by a guillotine door. During the training trial, each mouse was placed in the lighted compartment, and then when the mouse entered the dark compartment the door was closed, and the mouse received an inescapable electric shock (0.5 mA, 1 s). The test trial was given 1 day after the training trial, and again the mouse was placed in the lighted compartment and the latency time to enter the dark compartment was measured (the step-through latency maximum testing limit was 300 s) [16].

Preparation of tissue samples, and determination of ex vivo MDA level and AChE activity

For biochemical studies, mice were sacrificed. Brains were dissected and kept at -70°C before use. Whole brains were homogenized with 10 vol. of cold phosphate buffered saline (PBS) in an ice bath. Homogenates were directly centrifuged 10,000 g for 60 s to obtain the supernatant. Supernatant aliquots were used to determine brain malondialdehyde (MDA) levels, AChE activity and protein content.

The AChE assay was performed according to the colorimetric method of Ellmans [17] using acetylthiocholine iodide as a substrate. Whole brains homogenate (5 µL) was mixed with 65 µL of sodium phosphate buffer (50 mM, pH 8.0) and the mixtures incubated at 37°C for 15 min. Absorbance at 405 nm was read immediately after adding an Ellmans's reaction mixture [70 µL; 0.5 mM acetylthiocholine and 1 mM 5,5'-dithio-bis(2-nitrobenzoic

acid)] in a 50 mM sodium phosphate buffer (pH 8.0) to the above reaction mixture. The results were expressed as percent relative to the activity of the control group (100%).

The MDA level was assayed for products of lipid peroxidation by monitoring thiobarbituric acid reactive substance formation. In brief, 160 μ L of each homogenate was mixed with 960 μ L of phosphoric acid (1%, v/v) followed by addition of 320 μ L thiobarbituric acid solution (0.67%, w/w). The mixture was incubated at 95°C in a water bath for 1 h. After cooling, the colored complex was separated by centrifugation (1,600 g for 10 min), and absorbance was measured at 532 nm using tetramethoxypropane as a standard. MDA levels were expressed as nanomole per milligram of protein [16].

Identification of main phenolics with Q-TOF UPLC/MS

Individual main phenolics in the NAF from black soybean seed coat were qualitatively analyzed by using an ultra-performance liquid chromatography (UPLC) Accurate-Mass Quadrupole Time of-Flight (Q-TOF) UPLC/MS (Agilent Technologies, Santa Clara, CA, USA). That was operated with an electrospray source in negative ion mode to obtain MS and MS/MS data. Separation of phenolics was performed on a ACQUITY UPLC® BEH C₁₈ column (2.1 \times 100 mm, 1.7 μ m particle size; Waters Corp, Milford, MA, USA) with a flow rate of 0.3 ml/min, and oven temperature of 40°C. A linear solvent gradient of binary mobile phase (solvent A, 0.1% formic acid in distilled water; solvent B, 0.1% formic acid in acetonitrile) during analysis was applied as follows: 99% A/1% B at 0 min, 99% A/1% B at 2 min, 50% A/50% B at 8 min, 50% A/50% B at 10 min, and 99% A/1% B at 12 min. The conditions for MS analyses included the drying gas (N₂) temperature at 350°C, drying gas flow at 10 l/min, nebulizer pressure at 45 psi, fragmentor voltage at 175 V, and capillary voltage at 4000 V. Mass range was set from m/z 100 to 1000.

Statistical analysis

All data were expressed as mean \pm SD. Each experimental set was compared by one-way analysis of variance (ANOVA) and Duncan's multiple-range test ($P < 0.05$) using SAS software (SAS Institute Inc., Cary, NC, USA).

Results and discussion

Measurement of cellular oxidative stress

Oxidative stress caused by increased accumulation of ROS has been implicated in neurodegenerative diseases such as AD [16]. Oxidative stress in AD may result from aging, energy deficiency, inflammation, or excessive production of A β . A β can induce cell death through a mechanism involving hydrogen peroxide etc. [18,19].

The decreased oxidative stress values were measured using a DCF-DA assay [16]. Intracellular ROS accumulation resulting from A β treatment was significantly reduced

when cells were treated with NAF when compared with those only treated with A β (Figure 1). At the level of 200 μ M vitamin C as a positive control, decreased oxidative stress to about 29% below that of the only-A β treatment group. The NAF group (3-25 μ g/mL) resulted in a 94-79% decrease of cellular ROS levels compared to the A β exposure. These results suggest that the NAF group protected PC12 cells from oxidative toxicity.

Cytoprotective effects of the non-anthocyanin fraction

Deposits of A β and neurofibrillary tangles are the two pathological hallmarks of AD. There is recent evidence that A β aggregates can impair the functionality, morphology, and the subsequent viability of neuronal cells [19]. A β , in the form of insoluble fibril deposits, is an important constituent of senile plaques in AD patients, and it has been suggested to be the cause of the neurodegeneration that occurs in AD brains [20]. To evaluate A β neurotoxicity properly, it is important to use an appropriate method for monitoring cell viability. Consequently, an MTT reduction assay was used to investigate A β -induced neurotoxicity. The MTT dye reduction assay is based on the catalytic activity of some metabolic enzymes in entire mitochondria, and mitochondria may be one of the most sensitive primary targets of oxidative injury in neuronal cells [21]. A β caused a decrease in cell viability (about 63%), but pretreatment cells with increasing concentrations of NAF inhibited A β -induced neurotoxicity (Figure 2A).

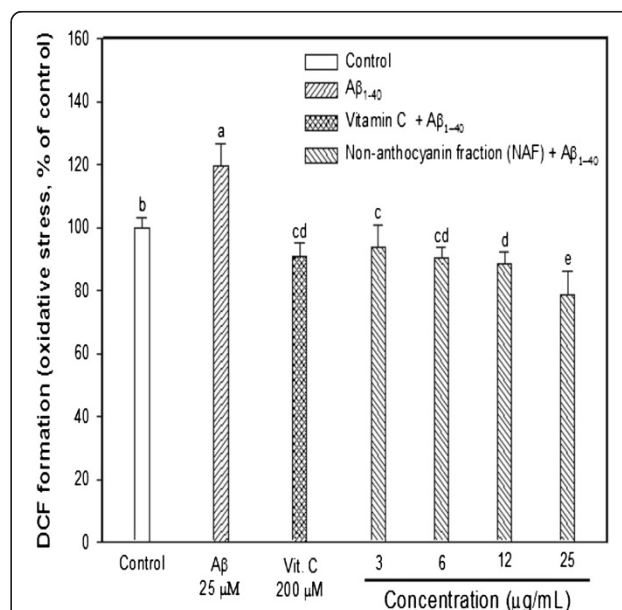
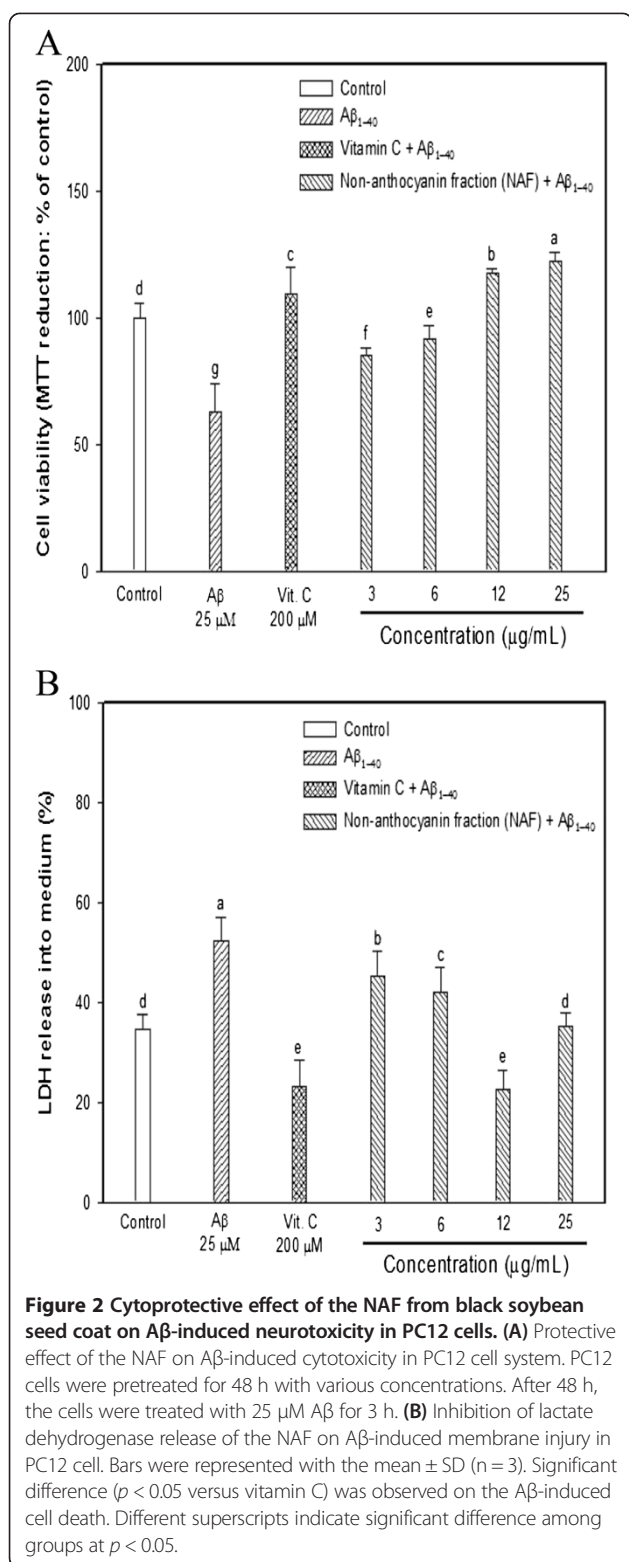


Figure 1 Effect of the NAF from black soybean seed coat on ROS production determined in the presence and absence of A β in PC12 cells. Results were expressed as mean \pm SD in triplicate. Significant difference ($p < 0.05$ versus vitamin C) was observed on the A β -induced cell death. Different superscripts indicate significant difference among groups at $p < 0.05$.



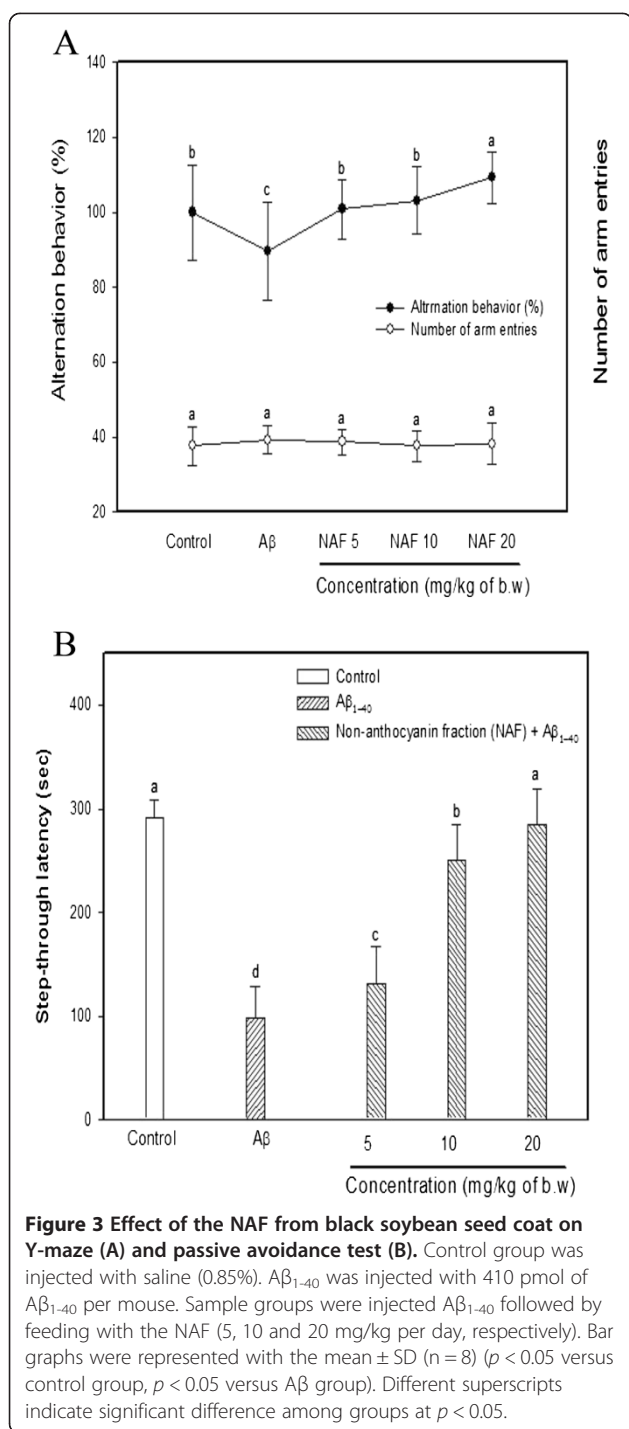
The viability of cells with the NAF was about 86–123% at concentrations ranging from 3 to 25 μg/mL. In particular, the group with ≥12 μg/mL displayed more effective protection than those in which vitamin C was used

as a positive control. The results of this study suggest that the neuron-like PC12 cell protection by NAF derived from black soybeans might be due to the mitochondrial protection.

Another assay in PC12 cell membranes was performed to confirm the neuroprotective effect of the non-anthocyanin fraction. An LDH assay is a means of measuring either the number of cells via total cytoplasmic LDH or membrane integrity as a function of amount of cytoplasmic LDH released into the medium [22]. Lipid peroxidation is increased in neurodegenerative diseases such as AD. Polyunsaturated fatty acid levels, especially arachidonic acid and docosahexaenoic acid, are high in the neuronal cells of the brain. They are more vulnerable to attack by ROS, peroxidation of which can lead to changes in membrane integrity and fluidity [15]. Because the neuronal plasma membrane is sensitive to oxidative stress, the cell membrane protective effect of the NAF derived from black soybean seed coat extracts on Aβ-induced neurotoxicity was investigated by the LDH release assay, measuring the activity of this stable enzyme released into the medium from apoptotic PC 12 cells. In this LDH assay, Aβ acted as an oxidative inducer that increased the plasma membrane damage in PC12 cells, whereas the NAF efficaciously protected against membrane loss. In other words, as shown in Figure 2B, Aβ treatment caused an increase in LDH release into the medium (52%), but the NAF treatment efficiently inhibited cytoplasmic LDH enzyme release. These results presented that the NAF could protect PC12 cells against the lesions induced by Aβ-induced neurotoxicity. A statistical correlation between in vitro antioxidant and neuroprotective effects was examined. The first order of regression analysis between DCF-DA assay and MTT assay had a correlation coefficient (r^2) of 0.696. Finally, the data suggested that the PC12 cell protection effect of the NAF is partially due to the mitochondrial and cell membrane protection effect working against the Aβ-induced neurotoxicity.

Effect of the NAF on Y-maze and passive avoidance test

The effect of dietary administration of NAF on behavioral abilities was examined using the animal model based on an intracerebroventricular (ICV) Aβ injection [10,16]. Cognitive effects were evaluated both in a Y-maze and by using a passive avoidance test. The Y-maze is a hippocampal-dependent test that evaluates long-term spatial memory. This test is different from the passive avoidance test since the Y-maze is based on the subject's innate inclination to explore a new environment, rather than on learning a new behavior or rule [23]. Exposure to Aβ causes impairments in the learning and memory systems of mice. It has also been reported that antioxidants can protect neuronal cells against Aβ-induced cytotoxicity [16]. In Figure 3A, the



mice injected with A β_{1-40} exhibited significantly impaired spatial working memories (10.50% decrease in alternation behavior) compared with that of the control group (100%). The groups that were pretreated with the sample increased their spontaneous alternation behavior after A β injection (the non-anthocyanin fraction 5 mg/kg: N5, 100.83%; 10 mg/kg: N10, 103.12%; 20 mg/kg: N20, 109.24%). In contrast, the number of arm entries did not change

between all the experimental groups, which demonstrated that general locomotor-activity was not affected by A β_{1-40} (Figure 3A). Our previous research presented that pretreatment with the chestnut inner skin fraction including gallic acid and catechins increased spontaneous alternation behavior in the A β -injected mice (5 mg/kg of the sample: 91%; 10 mg/kg of the sample: 98%; 20 mg/kg of the sample: 104%) [24]. These comparing results suggest that a diet containing NAF of black soybean seed coat have slightly higher protective effect against A β -induced cognitive loss.

The passive avoidance test is an amygdala-dependent test that evaluates the ability of mice to learn and to retain an associative rule. It had been reported to be related to 'long-term' or reference memory. N-Methyl-D-aspartic acid (NMDA) receptors are involved in the formation of post-training memory in the amygdala and hippocampus [25]. The passive avoidance paradigm has been used to study learning and memory associated with stressful stimulus. The procedure is based on the innate preference of rodents for the dark compartment of the apparatus and the suppression of this innate preference following exposure to an inescapable shock; that is, passive avoidance performance is an adaptive response to a stressful experience that serves as a measure of learning and memory [26]. As shown in Figure 3B, mice treated with the NAF exhibited attenuated A β -induced impairment in a dose-dependent manner. The passive avoidance test was carried out 5 days after A β_{1-40} injection. The A β -injected mice displayed a significant reduction (66.24% decrease) in step-through latency compared with the control group. The NAF attenuated the A β -induced impairment of the mice in the passive avoidance test. A statistical correlation between in vivo experiments was estimated. The first order of regression analysis between Y-maze test and passive avoidance test had a correlation coefficient (r^2) of 0.714. Therefore, these results indicate that the NAF displayed a significant anti-amnesic effect in the A β -induced mouse model.

Effect of the NAF on AChE activity and lipid peroxidation level in A β -injected mice brain

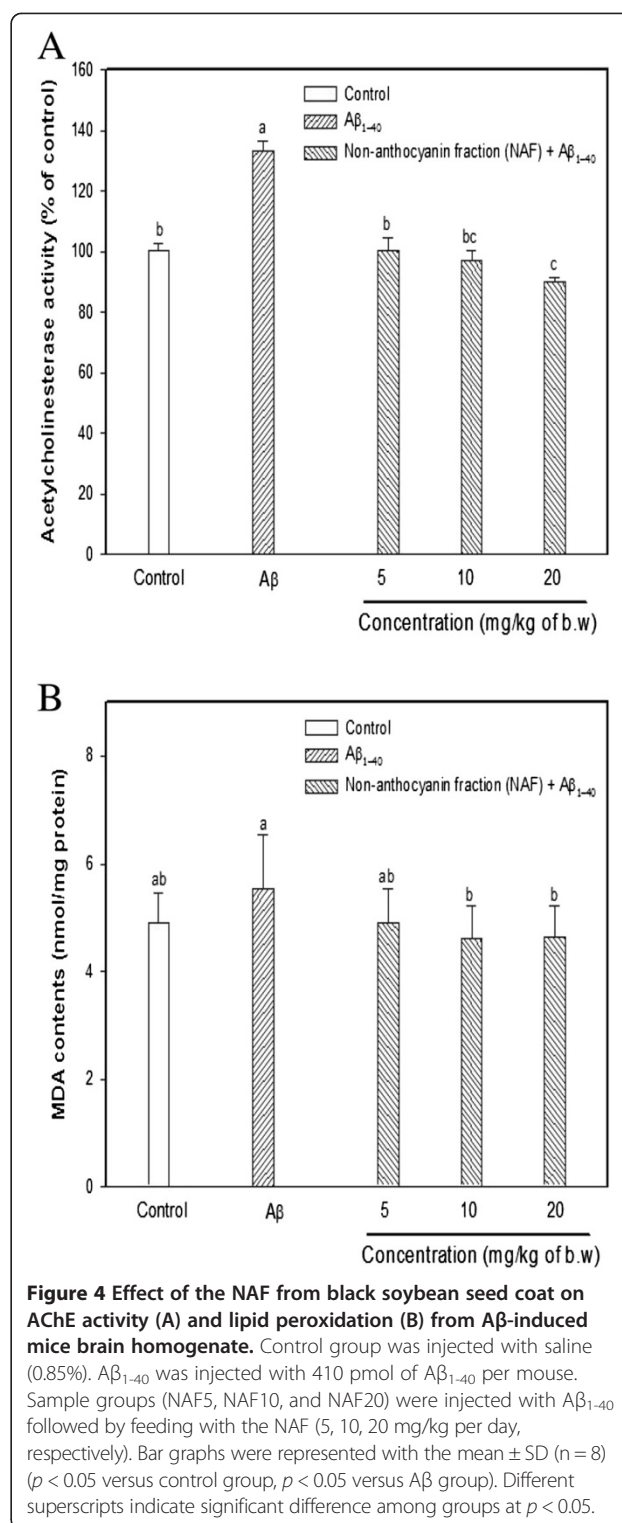
Current studies suggest that one of the fundamental characteristics of learning and memory impairment is the widespread degeneration and dysfunction of the cholinergic system. A β injection directly inhibits various cholinergic neuronal functions [10]. The involvement of the cholinergic system in learning/memory has long been established. AChE normally has a strong temporal association with the detection of novel or behaviorally significant stimuli and thus excessive AChE release might impair tasks that require learning novel stimuli [27,28]. AChE activity has been shown to be increased within and around amyloid plaques, to promote the

assembly of amyloid beta-peptides into fibrils, and to increase the cytotoxicity such as oxidative stress of these peptides [29]. In accordance, higher AChE inhibition does not necessarily mean better cognitive performance and the findings denote that there is an optimal balance between cholinergic neurotransmission and cognitive performance. Besides, AChE activity is also found in brain regions with low or no cholinergic inputs, such as the substantia nigra, cerebellum, globus pallidus, and the hypothalamus, where it exerts non-enzymatic neuro-modulatory functions that affect neurite outgrowth, synaptogenesis, the modulation of the activity of other proteins, regional cerebral blood flow, and other functions [30,31]. After in vivo assays, AChE activity in the mouse brain was determined to investigate the physiological effect of the non-anthocyanin fraction. As shown in Figure 4A, the A β group without sample treatment showed an increase in AChE activity, while the pretreatment groups with the NAF had relatively inhibited AChE in the brains of the mice. In particular, the AChE activity of the N20 group was significantly decreased when compared with that of the A β group.

We also examined whether the NAF could inhibit A β -induced lipid peroxidation by measuring the levels of malondialdehyde (MDA), a marker of lipid peroxidation, in the brain homogenates. ROS and the susceptibility of brain tissue to oxidative stress have been well reviewed [32]. In particular, polyunsaturated fatty acids (PUFAs, e.g., arachidonic acid etc.) are highly sensitive to oxidative modification due to their double bonds. Furthermore, the central nervous system is more susceptible to oxidative stress because it consumes approximately 20% of the total respired oxygen, even though it comprises only 2% of the body's weight. It is also known that the protective system in the brain is poor against oxidative stress, compared to other tissues [33]. Of the manifestations of oxidative damage, we specifically measured the lipid peroxidation end product, as it is one of the most commonly used biomarkers in neurodegeneration research. Several studies have found lipid peroxidation changes and MDA elevations in brain tissue [34]. The levels of MDA were found to have increased (0.6 nmole/mg protein) in the A β group when compared with that of the control group. The NAF administration significantly lowered the MDA concentration in a dose-dependent manner (Figure 4B). Therefore, it can be concluded that NAF attenuate the toxicity of A β through its action as an antioxidant in the brain tissue.

Identification and Q-TOF UPLC/MS fingerprint of main phenolics in the NAF of black soybean seed coat

Main phenolics of the NAF from black soybean seed coat were qualitatively identified by the Q-TOF UPLC/MS analysis for retention time, UV-VIS spectrum, MS² scan for mass fragmentation, and the comparison of MS



spectrum obtained by Q-TOF LC/MS (MS/MS) to fragmentation data from previous literature reports [35-37].

Full scan data showed that three phenolics (Compound A, B, and C) exhibited the molecular ions M⁻ m/z values of 577.1296, 289.0702, and 577.1241, respectively (Figure 5).

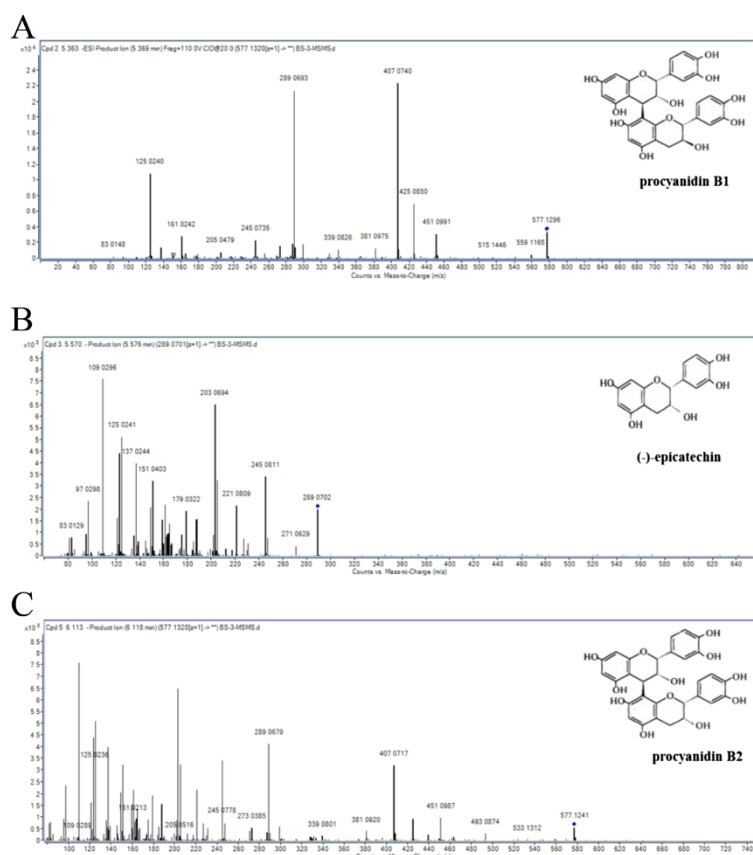


Figure 5 Q-TOF UPLC/MS spectra in negative ion mode and chemical structures of procyanidin B1 (A), (-)-epicatechin (B), and procyanidin B2 (C).

In addition, MS^2 scan data of compound A produced two major fragments at m/z 425.0850, 407.0740, 289.0693, and 125.0240. Based on the UV-VIS spectrum, retention time, and the comparison of MS spectrum obtained by Q-TOF LC/MS to fragmentation data from previous literature reports [35,37], compound A was provisionally analyzed as a procyanidin B1. Compound B as a main phenolics exhibited a molecular ion at m/z 289.0702 and fragment ions at m/z 245.0811, 203.0694, 179.0322, 161.0601, 151.0403, 137.0244, 125.0241, and 109.0296. Consequently, compound B was identified as epicatechin, based on the UV-VIS spectrum/retention time of commercial epicatechin standard, and the comparison of MS spectrum obtained by Q-TOF LC/MS to fragmentation data from previous literature reports [36,37]. Finally, main fragments of compound C containing the structural information for these compounds were those at m/z 407.0717, 289.0679, 273.0385, and 125.0236. Compounds C was tentatively identified as a procyanidin B2, based on the UV-VIS spectrum, retention time, and the comparison of MS spectrum obtained by Q-TOF LC/MS to fragmentation data from previous literature reports [35,37].

Black soybean has been a functional food for many years in Asia. Recently, many researches have focused on the physiological activities of the seed coats, which are rich in various phenolics, such as (epi)catechins, proanthocyanidins (PA), and other flavonoids [1,2,5]. PAs as condensed tannins are present in various food-stuffs, and they are polymers of flavan-3-ols which present a wide variety of chemical structures: among their structural units there may be (epi)catechin, (epi)gallocatechin or (epi)afzelechin units, in which case they are called procyanidins (PC), prodelphinidins, and propelargonidins, respectively. PA can be divided into several sub-classes, of which the PC, exclusively consisting of (epi)catechin units and their galloyl derivatives, is the most abundant. The monomeric units of PC are linked through a C4-C8 or C4-C6 bond (B-type), which can co-exist with an additional C2-O-C7 or the less abundant C2-O-C5 bond (A-type) [35,37]. In our Q-TOF UPLC/MS results, MS^2 scan data also showed that compounds A, B, and C made the fragmentation of (epi)catechin (m/z 289), indicating that all of them were derivatives of procyanidin B group.

(+)-Catechin and (-)-epicatechin are flavonoids that exist widely in natural products or functional food substances. Catechins in green tea, namely (-)-epicatechin, (-)-epicatechin-3-gallate, (-)-epigallocatechin, (-)-epigallocatechin-3-gallate, (+)-catechin, and (+)-gallocatechin, were found to have antioxidant, anti-cancer, hypocholesterolemic, anti-ageing, and anti-inflammatory effects [38]. The antioxidation mechanism of (+)-catechin is considered to be due to the change of the B-ring to an o-quinone. (-)-Epicatechin was also confirmed to give a similar result. This changed o-quinone structure has stronger antioxidative activity [39]. Besides, (epi)catechins have been reported to prevent A β -induced oxidative damage in cultured neuronal cells [22]. And several in vitro and in vivo studies suggest that catechins may affect potential targets associated with the progression of neurodegenerative disease such as AD [40,41]. A β ₂₅₋₃₅ is known to be the toxic domain of the A β ₁₋₄₀₍₄₂₎, where methionine, at position 35, seems to be responsible for the redox site conformation. It induces severe neuronal damage in several ways, such as the increase of intracellular calcium, oxidative stress, apoptosis, and necrosis that may be responsible for the cognitive deficit [42].

Soybean varieties including black soybeans contain plentiful concentration of physiological phenolics such as anthocyanin sans isoflavones. Among the several anthocyanins, cyanidin-3-glucoside (C-3-G) is the most abundant component, consisting of about 70% of the total anthocyanins in black soybean seed coats [43]. It has been presented that C-3-G as anthocyanins has strong antioxidant activity, and protective effect against oxidative stress-induced PC12 cell death [44]. Recent research also reported the protective effect of C-3-G which is able to cross the blood-brain-barrier and can localize to brain, against ischemia-reperfusion injury in the brain tissue [45,46]. In addition, another study reported that soybean isoflavone improved A β -induced learning and memory deficit, because soybean isoflavone such as genistein prevented A β ₁₋₄₀ induced pathological changes through antioxidant pathway in rats [47,48]. Soybean isoflavone also reverse A β -induced down-regulation of neuronal synaptic plasticity such as synaptophysin, PSD-95, CaM, CaMK II, CREB, pCaMK II (Thr286), and pCREB (Ser133) [49]. Consequently, we also found that A β increased oxidative stress in PC12 cell, and consequently lipid peroxidation, accompanied by loss of learning and memory deficits, and increased AChE/MDA level in the mice brain tissue. However, (-)-epicatechin, found as main phenolics in the non-anthocyanin fraction, seem to be the major contributors to in vitro neuronal cell protective effect against A β -induced oxidative stress, and they attenuate the learning and memory deficits through inhibition of AChE/MDA formation in the present study. Therefore, our results show a new possibility to search for

effective treatments against the neurodegenerative disease such as AD, although more investigations are needed to understand the precise mechanisms of action of these phenolics in the NAF from black soybean seed coat.

Conclusions

It can be concluded that NAF derived from black soybean seed coat extract inhibit the neuronal cell death caused by A β -induced cytotoxicity, and improve A β -induced learning and memory deficits. After completing the in vivo behavioral tests, important biochemical markers in the brain tissues of the mice also confirmed the protective effects of the non-anthocyanin fraction. The potential neuroprotective effects of the NAF are linked to inhibition of AChE and MDA production in mice brain tissue with A β -induced amnesia. Therefore, NAF including epicatechin as a main contributor might be effective in preventing the onset of learning and memory impairment, and in ameliorating cognitive defects in the early phases of neurodegeneration.

Abbreviations

DCF-DA: 2',7'-dichlorofluorescein diacetate; MTT: 3-[4,5-dimethylthiazol-2-yl]-2,5-diphenyl tetrazolium bromide; LDH: Lactate dehydrogenase; AChE: Acetylcholinesterase; MDA: Malondialdehyde; DPPH: 2,2-diphenyl-1-picrylhydrazyl; FRAP: Ferric-reducing antioxidant power; ORAC: Oxygen radical absorbance capacity; A β : Amyloid β peptide; AD: Alzheimer's disease; ROS: Reactive oxidative species; APP: Amyloid precursor protein; PC12: Pheochromocytoma; TBA: Thiobarbituric acid; RPMI: Roswell Park Memorial Institute; NGF: Nerve growth factor; DCF: Dichlorofluorescein; ICR: Institute of cancer research; ICV: Intracerebroventricular; PBS: Phosphate buffered saline; ANOVA: One-way analysis of variance; NAF: Non-anthocyanin fraction; NMDA: N-Methyl-D-aspartic acid; Q-TOF: Quadrupole time-of-flight; PA: Proanthocyanidins; PC: Procyanidins.

Competing interests

The authors declare that they have no competing interests.

Authors' contributions

JHJ participated in the design of the study. JHJ, HJK, DEJ, and OJK conducted the experiments, analyzed the data and drafted the manuscript. SKP, and HJK identified and confirmed main phenolics. All authors read and approved the final version of the manuscript.

Acknowledgments

This work was supported by the National Research Foundation of Korea Grant funded by the Korean Government (KRF-2011-0021664), and by the Development Program for Forest Science and Technology of Korea Forest Service (2013-Free10), Republic of Korea. J. H. Jeong, H. J. Kim, S. K. Park, and D. E. Jin were supported by BK21 plus program (MEST).

Author details

¹Division of Applied Life Science, Institute of Agriculture and Life Science, Gyeongsang National University, Jinju 660-701, South Korea. ²Daegyeong Institute for Regional Program Evaluation, Regional Industry, Evaluation Agency for Gyeongbuk, Gyeongsan 712-210, South Korea.

Received: 26 March 2014 Accepted: 10 December 2014

Published: 13 December 2014

References

1. Xu B, Chang SK: Total phenolics, phenolic acids, isoflavones, and anthocyanins and antioxidant properties of yellow and black soybeans as affected by thermal processing. *J Agr Food Chem* 2008, **56**:7165-7175.

2. Takahashi R, Ohmori R, Kiyose C, Momiyama Y, Ohsuzu F, Kondo K: **Antioxidant activities of black and yellow soybeans against low density lipoprotein oxidation.** *J Agr Food Chem* 2005, **53**:4578–4582.
3. Xu BJ, Yuan SH, Chang SKC: **Comparative studies on the antioxidant activities of nine common food legumes against copper-induced human low-density lipoprotein oxidation in vitro.** *J Food Sci* 2007, **72**:S522–S527.
4. Zou Y, Chang SKC: **Effect of black soybean extract on the suppression of the proliferation of human AGS gastric cancer cells via the induction of apoptosis.** *J Agr Food Chem* 2011, **59**:4597–4605.
5. Kanamoto Y, Yamashita Y, Nanba F, Yoshida T, Tsuda T, Fukuda I, Nakamura-Tsuruta S, Ashida H: **A black soybean seed coat extract prevents obesity and glucose intolerance by up-regulating uncoupling proteins and down-regulating inflammatory cytokines in high-fat diet-fed mice.** *J Agr Food Chem* 2011, **59**:8985–8993.
6. Tsuyi K, Park HB, Kim YM, Chung JI, Shin SC, Shim HJ, Lee WS, Seo HG, Lee JH, Chang KC, Kim HJ: **Protective effect of anthocyanins from black soybean seed coats on UVB-induced apoptotic cell death in vitro and in vivo.** *J Agr Food Chem* 2008, **56**:10600–10605.
7. Park HB, Hah YS, Yang JW, Nam JB, Cho SH, Jeong ST: **Antiapoptotic effects of anthocyanins on rotator cuff tenofibroblasts.** *J Orthop Res* 2010, **28**:1162–1169.
8. Li G, Ma R, Huang CF, Hang Q, Fu Q, Liu H, Hu BR, Xiang JZ: **Protective effect of erythropoietin on β -amyloid-induced PC12 cell death through antioxidant mechanisms.** *Neurosci Lett* 2008, **442**:143–147.
9. Selkoe DJ: **Alzheimer's disease: genes, proteins, and therapy.** *Physiol Rev* 2001, **81**:741–766.
10. Cheng YF, Wang C, Lin HB, Li YF, Haung Y, Xu JP, Zhang HT: **Inhibition of phosphodiesterase-4 reverses memory deficits produced by $A\beta_{25-35}$ or $A\beta_{1-40}$ peptide in rats.** *Psychopharmacology* 2010, **212**:181–191.
11. Miguel-Hidalgo JJ, Cacabelos R: **Beta-amyloid(1–40)-induced neurodegeneration in the rat hippocampal neurons of the CA1 subfield.** *Acta Neuropathol (Berl)* 1998, **95**:455–465.
12. Kong SZ, Xian YF, Ip SP, Lai XP, Shi XG, Lin ZX, Su ZR: **Protective effects of hydroxysafflor yellow A on β -amyloid-induced neurotoxicity in PC12 cells.** *Neurochem Res* 2013, **38**:951–960.
13. Ariga T, Asao Y, Sugimoto H, Yokotsuka T: **Occurrence of astringent oligomeric proanthocyanidins in legume seeds.** *Agr Biol Chem* 1981, **45**:2705–2708.
14. Kim DO, Lee CY: **Extraction and Isolation of Polyphenolics.** In *Current Protocols in Food Analytical Chemistry*. Edited by Wrolstad RE. New York, USA: John Wiley & Sons; 2002:11.2.1–11.2.12.
15. Kim JH, Choi GN, Kwak JH, Jeong HR, Jeong CH, Heo HJ: **Neuronal cell protection and acetylcholinesterase inhibitory effect of the phenolics in chestnut inner skin.** *Food Sci Biotechnol* 2011, **20**:311–318.
16. Choi SJ, Kim MJ, Heo HJ, Kim JK, Jun WJ, Kim HK, Kim EK, Kim MO, Cho HY, Hwang HJ, Kim YJ, Shin DH: **Ameliorative effect of 1,2-benzenedicarboxylic acid dinonyl ester against amyloid beta peptide-induced neurotoxicity.** *Amyloid* 2009, **16**:15–24.
17. Ellman GL, Courtney KD, Andres V, Featherstone RM: **A new and rapid colorimetric determination of acetylcholinesterase activity.** *Biochem Pharmacol* 1961, **7**:88–95.
18. Smith MA, Rottkamp CA, Nunomura A, Raina AK, Perry G: **Oxidative stress in Alzheimer's disease.** *BBA-Mol Cell Res* 2000, **1502**:139–144.
19. Walsh DM, Selkoe DJ: **$A\beta$ oligomers - a decade of discovery.** *J Neurochem* 2007, **101**:1172–1184.
20. Varadarajan S, Yatin S, Aksenova M, Butterfield DA: **Review: Alzheimer's amyloid β - peptide-associated free radical oxidative stress and neurotoxicity.** *J Struct Biol* 2000, **130**:184–208.
21. Jang JH, Surh YJ: **Protective effect of resveratrol on β -amyloid-induced oxidative PC12 cell death.** *Free Radical Bio Med* 2003, **34**:1100–1110.
22. Heo HJ, Lee CY: **Epicatechin and catechin in cocoa inhibit amyloid beta protein induced apoptosis.** *J Agr Food Chem* 2005, **53**:1445–1448.
23. Bridoux A, Laloux C, Derambure P, Bordet R, Monaca Charley C: **The acute inhibition of rapid eye movement sleep by citalopram may impair spatial learning and passive avoidance in mice.** *J Neur Transm* 2013, **120**:383–389.
24. Gacar N, Mutlu O, Utkan T, Celikyurt IK, Gocmez SS, Ulak G: **Beneficial effects of resveratrol on scopolamine but not mecamlamine induced memory impairment in the passive avoidance and Morris water maze tests in rats.** *Pharmacol Biochem Behav* 2011, **99**:316–923.
25. Tsuji M, Takeda H, Matsumiya T: **Modulation of passive avoidance in mice by the 5-HT1A receptor agonist flesinoxan: comparison with the benzodiazepine receptor agonist diazepam.** *Neuropsychopharmacol* 2003, **28**:664–674.
26. Jeong HR, Jo YN, Jeong JH, Jin DE, Song BG, Choi SJ, Shin DH, Heo HJ: **Antiamnesic effects of ethyl acetate fraction from chestnut (*Castanea crenata* var. *dulcis*) inner skin on $A\beta_{25-35}$ -induced cognitive deficits in mice.** *J Med Food* 2012, **15**:1–6.
27. Kaneto H: **Learning/memory processes under stress conditions.** *Behav Brain Res* 1997, **83**:71–74.
28. Bainbridge NK, Koselke LR, Jeon J, Bailey KR, Wess J, Crawley JN, Wrenn CC: **Learning and memory impairments in a congenic C57BL/6 strain of mice that lacks the M_2 muscarinic acetylcholine receptor subtype.** *Behav Brain Res* 2008, **190**:50–58.
29. Melo JB, Agostinho P, Oliveira CR: **Involvement of oxidative stress in the enhancement of acetylcholinesterase activity induced by amyloid beta-peptide.** *Neurosci Res* 2003, **45**:117–127.
30. Silman I, Sussman JL: **Acetylcholinesterase: 'classical' and 'non-classical' functions and pharmacology.** *Curr Opin Pharmacol* 2005, **5**:293–302.
31. Zimmerman G, Soreq H: **Termination and beyond: acetylcholinesterase as a modulator of synaptic transmission.** *Cell Tissue Res* 2006, **326**:655–669.
32. Christen Y: **Oxidative stress and Alzheimer disease.** *Am J Clin Nutr* 2000, **71**:621S–629S.
33. Reiter RJ: **Oxidative processes and antioxidative defense mechanisms in the aging brain.** *FASEB J* 1995, **9**:526–533.
34. Prasad MR, Lovell MA, Yatin M, Dhillon H, Markesbery WR: **Regional membrane phospholipid alterations in Alzheimer's disease.** *Neurochem Res* 1998, **23**:81–88.
35. Jiménez JP, Torres JL: **Analysis of proanthocyanidins in almond blanch water by HPLC-ESI-QqQ-MS/MS and MALDI-TOF/TOF MS.** *Food Res Intl* 2012, **49**:798–806.
36. Chang CL, Wu RT: **Quantification of (+)-catechin and (-)-epicatechin in coconut water by LC-MS.** *Food Chem* 2011, **126**:710–717.
37. Prodanov M, Vacas V, Hernandez T, Estrella I, Amador B, Winterhalter P: **Chemical characterisation of Malvar grape seeds (*Vitis vinifera* L.) by ultrafiltration and RP-HPLC-PAD-MS.** *J Food Comps Anal* 2013, **31**:284–292.
38. Nurulain TZ: **Green tea and its polyphenolic catechins: Medicinal uses in cancer and noncancer applications.** *Life Sci* 2006, **78**:2073–2080.
39. Sawai S, Sakata K: **NMR Analytical Approach To Clarify the Antioxidative Molecular Mechanism of Catechins Using 1,1-Diphenyl-2-picrylhydrazyl.** *J Agr Food Chem* 1998, **46**:111–114.
40. Mandel S, Youdim MB: **Catechin polyphenols: neurodegeneration and neuroprotection in neurodegenerative diseases.** *Free Radic Biol Med* 2004, **37**:304–317.
41. Rezaei-Zadeh K, Shytle D, Sun N, Mori T, Hou H, Jeannon D, Ehrhart J, Townsend K, Zeng J, Morgan D, Hardy J, Town T, Tan J: **Green tea epigallocatechin-3-gallate (EGCG) modulates amyloid precursor protein cleavage and reduces cerebral amyloidosis in Alzheimer transgenic mice.** *J Neurosci* 2005, **25**:8807–8814.
42. Stepanichev MY, Zdobnova IM, Zarubenko II, Moiseeva YV, Lazareva NA, Onufriev MV, Gulyaeva NV: **Amyloid-beta(25-35)-induced memory impairments correlate with cell loss in rat hippocampus.** *Physiol Behav* 2004, **80**:647–655.
43. Lee JH, Kang NS, Shin SO, Shin SH, Lim SG, Suh DY, Baek IY, Park KY, Ha TJ: **Characterisation of anthocyanins in the black soybean (*Glycine max* L.) by HPLC-DAD-ESI/MS analysis.** *Food Chem* 2009, **112**:226–231.
44. Heo HJ, Lee CY: **Strawberry and its anthocyanins reduce oxidative stress-induced apoptosis in PC12 cells.** *J Agr Food Chem* 2005, **53**:1984–1989.
45. Andres-Lacueva C, Shukitt-Hale B, Galli RL, Jauregui O, Lamuela-Raventos RM, Joseph JA: **Anthocyanins in aged blueberry-fed rats are found centrally and may enhance memory.** *Nutr Neurosci* 2005, **8**:111–120.
46. Kang TH, Hur JY, Kim HB, Ryu JH, Kim SY: **Neuroprotective effects of the cyanidin-3-O- β -D-glucopyranoside isolated from mulberry fruit against cerebral ischemia.** *Neurosci Lett* 2006, **391**:122–126.
47. Ma WW, Xiang L, Yu HL, Yuan LH, Guo AM, Xiao YX, Li L, Xiao R: **Neuroprotection of soyabean isoflavone co-administration with folic acid against beta-amyloid 1-40-induced neurotoxicity in rats.** *Br J Nutr* 2009, **102**:502–505.
48. Xi YD, Yu HL, Ding J, Ma WW, Yuan LH, Feng JF, Xiao YX, Xiao R: **Flavonoids protect cerebrovascular endothelial cells through Nrf2 and PI3K from**

beta-amyloid peptide-induced oxidative damage. *Curr Neurovasc Res* 2012, **9**:32–41.

49. Ding J, Xi YD, Zhang DD, Zhao X, Liu JM, Li CQ, Han J, Xiao R: Soybean isoflavone ameliorates beta-amyloid 1-42-induced learning and memory deficit in rats by protecting synaptic structure and function. *Synapse* 2013, **67**:856–864.

doi:10.1186/1472-6882-14-482

Cite this article as: Jeong *et al.*: An investigation into the ameliorating effect of black soybean extract on learning and memory impairment with assessment of neuroprotective effects. *BMC Complementary and Alternative Medicine* 2014 **14**:482.

**Submit your next manuscript to BioMed Central
and take full advantage of:**

- Convenient online submission
- Thorough peer review
- No space constraints or color figure charges
- Immediate publication on acceptance
- Inclusion in PubMed, CAS, Scopus and Google Scholar
- Research which is freely available for redistribution

Submit your manuscript at
www.biomedcentral.com/submit

