

# Peroral endoscopic myotomy (POEM) vs laparoscopic Heller myotomy (LHM) for the treatment of Type III achalasia in 75 patients: a multicenter comparative study

## Authors

Vivek Kumbhari<sup>1</sup>, Alan H Tieu<sup>1</sup>, Manabu Onimaru<sup>2</sup>, Mohammad H. El Zein<sup>1</sup>, Ezra N. Teitelbaum<sup>3</sup>, Michael B. Ujiki<sup>4</sup>, Matthew E. Gitelis<sup>4</sup>, Rani J. Modayil<sup>5</sup>, Eric S. Hungness<sup>3</sup>, Stavros N. Stavropoulos<sup>5</sup>, Hiro Shiwaku<sup>6</sup>, Rastislav Kunda<sup>7</sup>, Philip Chiu<sup>8</sup>, Payal Saxena<sup>1</sup>, Ahmed A. Messallam<sup>1</sup>, Haruhiro Inoue<sup>2</sup>, Mouen A. Khashab<sup>1</sup>

## Institutions

Institutions are listed at the end of article.

## submitted

22. November 2014

## accepted after revision

8. December 2014

## Bibliography

DOI <http://dx.doi.org/10.1055/s-0034-1391668>  
Published online: 13.4.2015  
Endosc Int Open 2015; 03: E195–E201  
© Georg Thieme Verlag KG  
Stuttgart · New York  
E-ISSN 2196-9736

## Corresponding author

**Mouen A. Khashab, M.D**

Associate Professor of Medicine  
Director of Therapeutic  
Endoscopy  
Johns Hopkins Hospital  
1800 Orleans St, Suite 7125B  
Baltimore, MD 21287  
Phone: (443) 287-1960  
Fax: (443) 683 8335  
[mkhasha1@jhmi.edu](mailto:mkhasha1@jhmi.edu)

**Background and study aims:** Type III achalasia is characterized by rapidly propagating pressurization attributable to spastic contractions. Although laparoscopic Heller myotomy (LHM) is the current gold standard management for type III achalasia, peroral endoscopic myotomy (POEM) is conceivably superior because it allows for a longer myotomy. Our aims were to compare the efficacy and safety of POEM with LHM for type III achalasia patients.

**Patients and methods:** A retrospective study of 49 patients who underwent POEM for type III achalasia across eight centers were compared to 26 patients who underwent LHM at a single institution. Procedural data were abstracted and pre- and post-procedural symptoms were recorded. Clinical response was defined by improvement of symptoms and decrease in Eckardt stage to  $\leq 1$ . Secondary outcomes included length of myotomy,

procedure duration, length of hospital stay, and rate of adverse events.

**Results:** Clinical response was significantly more frequent in the POEM cohort (98.0% vs 80.8%;  $P=0.01$ ). POEM patients had significantly shorter mean procedure time than LHM patients (102 min vs 264 min;  $P<0.01$ ) despite longer length of myotomy (16 cm vs 8 cm;  $P<0.01$ ). There was no significant difference between POEM and LHM in the length of hospital stay (3.3 days vs 3.2 days;  $P=0.68$ ), respectively. Rate of adverse events was significantly less in the POEM group (6% vs 27%;  $P<0.01$ ).

**Conclusions:** POEM allows for a longer myotomy than LHM, which may result in improved clinical outcomes. POEM appears to be an effective and safe alternative to LHM in patients with type III achalasia.

## Abbreviations

LHM	laparoscopic Heller myotomy
EGJ	esophagogastric junction
LES	lower esophageal sphincter
POEM	peroral endoscopic myotomy

## Introduction

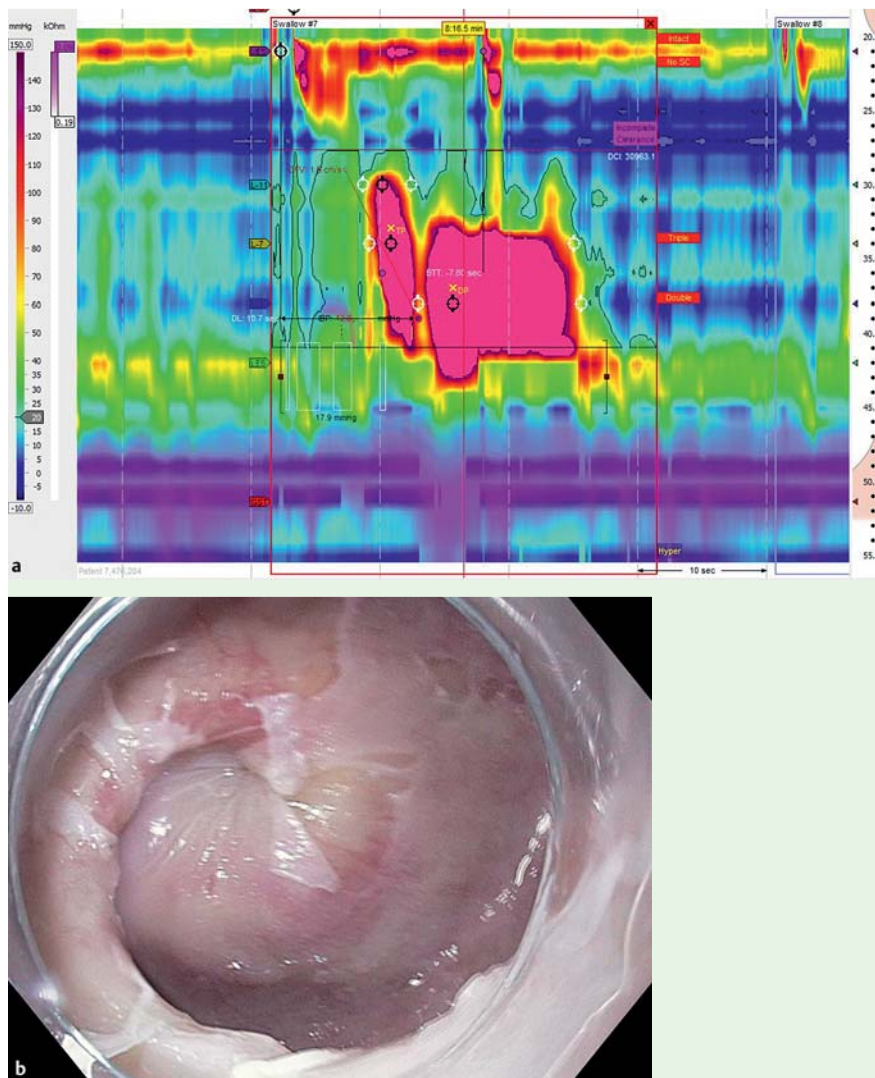
The Chicago classification of esophageal motility disorders divides achalasia into three subtypes based on high-resolution esophageal manometry [1]. Type I achalasia is characterized by minimal contractility of the esophageal body. Type II achalasia is the most common type occurring in 65% of patients and is defined by absence of peristalsis and intermittent periods of compartmentalized esophageal pressurization. Type III achalasia is the least common occurring in 10% of patients and is distinguished by spastic contractions that can involve the entire length of esophagus [2].

There are a variety of therapies available to palliate the symptoms of achalasia with varying rates of success [3]. Type III achalasia is classified as a spastic esophageal disorder and is the least well studied achalasia subtype because of its low incidence. Management of spastic esophageal disorders is a particular challenge and standard pharmacologic and endoscopic therapy fail in as many as 74% of patients [4]. The outcomes of transabdominal laparoscopic Heller myotomy (LHM) for type III achalasia has been reported in subgroup analysis of achalasia studies with clinical response rates of 69.3% to 86% [5,6]. These outcomes are inferior to LHM for other achalasia subtypes as evidenced by response rates for type II of 95% [5,6]. The lower response rates observed in type III achalasia are presumably because of the limitation of the proximal extent of esophageal myotomy that can be reliably achieved with the surgical approach.

Peroral endoscopic myotomy (POEM) was first described in a porcine model in 2007, and now,

## License terms



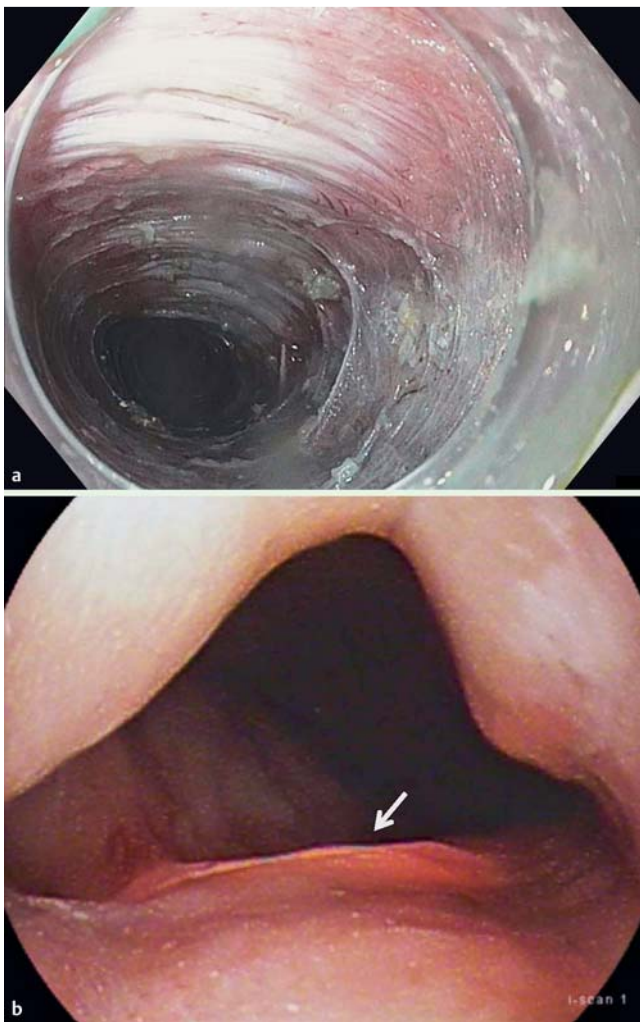


**Fig. 1** Manometric and endoscopic findings in a patient with type III achalasia. **a** High intensity spastic contraction (DCI of 30,000) with elevated lower esophageal sphincter baseline pressure typical of type III achalasia. **b** Endoscopic view during an episode of spastic contraction in the midesophagus.

seven years later, more than 5 000 clinical procedures have been performed in several centers across the world [7, 8]. Initial clinical data from Europe, Asia, and United States has demonstrated the effectiveness and safety of this procedure when performed by experienced endoscopists [8]. POEM is potentially an ideal endoscopic therapy for type III achalasia because it not only allows myotomy of the lower esophageal sphincter (LES) but also of the esophageal body, where the hypertensive contractions often occur [9]. There are currently no reports comparing the outcomes of POEM with LHM for the management of type III achalasia. Our hypothesis was that the suboptimal clinical response observed with LHM in the treatment of type III achalasia is due to an inadequate myotomy length. Therefore, because POEM allows for a longer myotomy, it may be more successful in achieving clinical response. Our aims were to compare the effectiveness and safety of POEM and LHM for the treatment of patients with type III achalasia.

### Patients and methods

This retrospective study was approved by the Institutional Review Board for Human Research and complied with Health Insurance Portability and Accountability Act regulations at each institution. All patients who underwent POEM for treatment of type III achalasia at eight centers (4 US, 3 Asian, and 1 European) between January 2011 and November 2013 were included. Results from these patients were compared to those of a retrospective cohort of patients who had undergone transabdominal LHM for type III achalasia between August 2000 and December 2013 at a single tertiary United States institution (Johns Hopkins Hospital). In all patients, the diagnosis was based on a combination of clinical presentation, barium esophagram, and manometric findings. Because the Chicago classification was published in 2008, all patients with a diagnosis of spastic or vigorous achalasia (diagnosis made prior to 2008) were defined as having type III achalasia in this study [10]. Patients with other spastic esophageal disorders (Jackhammer esophagus, diffuse esophageal spasm) and altered surgical anatomy were excluded. Patients in the POEM cohort were identified from a multicenter database of spastic esophageal disorders. Patients in the LHM cohort were identified by review of the single institution's billing database and those who had the indication of vigorous, spastic, or type III achalasia were included. Relevant clinical (prior therapy, Eckardt stage), manometric findings, length of myotomy, and procedure time were abstracted (Fig. 1) [11]. Pre-procedural and post-procedural symptoms (eg, Eckardt stage, requirement for ongoing PPI therapy, and need for subsequent therapy) were also recorded. Adverse events were graded according to the American Society for Gastrointestinal Endoscopy (ASGE) lexicon's severity grading system [12].

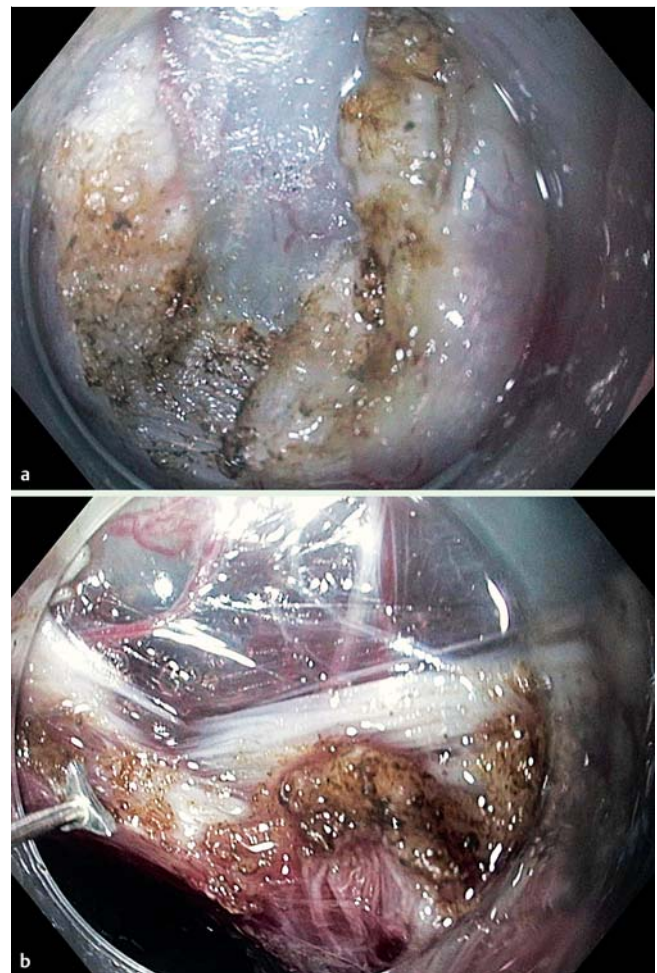


**Fig. 2** Treatment of a patient with spastic esophageal disorder. **a** Long submucosal tunnel performed during peroral endoscopic myotomy. **b** Transillumination observed 3 cm below the esophagogastric junction indicating extension of myotomy into the proximal stomach.

Clinical response was defined by improvement of symptoms and decrease in Eckardt stage to  $\leq 1$  (Table 1) [13–15]. The length of follow-up for patients was defined as the time from the procedure to the date of last clinical follow-up.

### POEM procedures

POEM procedures were performed as previously described by Inoue et al. using high-definition gastroscopes fitted with transparent caps under general anesthesia and insufflation using carbon dioxide [16]. Either a triangular tip knife (KD 640L, Olympus, Japan) or HybridKnife (ERBE, Tübingen, Germany) was used. In brief, after a submucosal bleb was created, a longitudinal mucosal incision was made and the endoscope then entered the submucosal space. The submucosal fibers were dissected and a submucosal tunnel was extended 2 cm–3 cm into the proximal stomach (Fig. 2). Subsequently, either selective myotomy of the inner circular muscle bundles or full-thickness myotomy was performed (Fig. 3). The length of myotomy was determined based on the findings at high-resolution esophageal manometry and/or the proximal level of visible spastic contractions observed endoscopically. Mucosal entry was closed using endoscopic clips (Video 1).



**Fig. 3** Myotomy during peroral endoscopic myotomy. **a** Selective inner circular myotomy. **b** Full thickness myotomy.

### Laparoscopic Heller myotomy procedures

LHM procedures were performed using the daVinci robotic system (Intuitive Surgical, Inc., Palo Alto, California, United States) via a transabdominal approach. The diaphragmatic hiatus was dissected open to allow for mobilization of the medial esophagus to at least 6 cm proximal to the esophagogastric junction (EGJ). A myotomy of both the circular and longitudinal muscle layers was performed from at least 6 cm proximal to the EGJ to 2 cm–3 cm into the proximal stomach using hook electrocautery (Fig. 4). The open jaws of a laparoscopic grasper (2.5 cm) were used to measure myotomy length. The crura was then loosely approximated to allow for the passage of a 5 mm diameter instrument through the hiatus. Patients then underwent a 270° posterior (Toupet) fundoplication or anterior 180° (Dor) fundoplication for postoperative reflux control. A posterior Toupet fundoplication was performed preferentially unless excessive angulation of

### Video

Characteristic endoscopic findings and steps involved during peroral endoscopic myotomy in a patient with type III achalasia.

online content including video sequences viewable at:  
[www.thieme-connect.de](http://www.thieme-connect.de)

Score	Dysphagia	Retrosternal pain	Regurgitation	Weight loss
0	None	None	None	None
1	Occasional	Occasional	Occasional	< 5 Kg
2	Daily	Daily	Daily	5 – 10 Kg
3	Every meal	Every meal	Every meal	> 10 Kg
	Stage 0	Stage 1	Stage 2	Stage 3
Score total	0 – 1 (Remission)	2 – 3 (Remission)	4 – 6 (Failure)	> 6 (Failure)

**Table 1** Eckardt symptom scoring and staging

	POEM n = 49	LHM n = 26	P value
Age, mean (SD)	58.3 (18.8)	51.6 (17.9)	0.15
Female, n (%)	20 (40.8)	13 (50.0)	0.45
Prior therapy, n (%)			
None	30 (61.2)	7 (26.9)	< 0.01
Endoscopic therapies	15 (30.6)	19 (73.1)	< 0.01
LHM	4 (8.2)	0	0.29
Eckardt stage, n (%)			
0	1 (2.0)	0	1
I	2 (4.1)	0	0.54
II	24 (49.0)	4 (15.4)	< 0.01
III	22 (44.9)	22.0 (84.6)	< 0.01
Mean residual pressure, mmHg (SD)	34.4 (15.5)	36.2 (13.9)	0.79

**Table 2** Baseline characteristics of patients who underwent peroral endoscopic myotomy and laparoscopic Heller myotomy

the EGJ resulted or mucosal perforation occurred in which patient an anterior Dor fundoplication was utilized.

All patients were subsequently admitted for inpatient hospital observation. Esophagram was obtained the following day and soft diet was commenced after esophageal leak was excluded.

### Study outcomes

Our primary outcome was clinical response, which was defined as improvement in symptoms reflected by an Eckardt stage  $\leq 1$  at time of last clinical follow-up. Our secondary outcomes were length of myotomy, procedure duration, requirement for ongoing PPI therapy, length of hospital stay, and rate of adverse events. Results are reported as mean  $\pm$  standard deviation (SD) and/or range for quantitative variables, and absolute and relative frequencies for categorical variables. Outcomes between pre- and

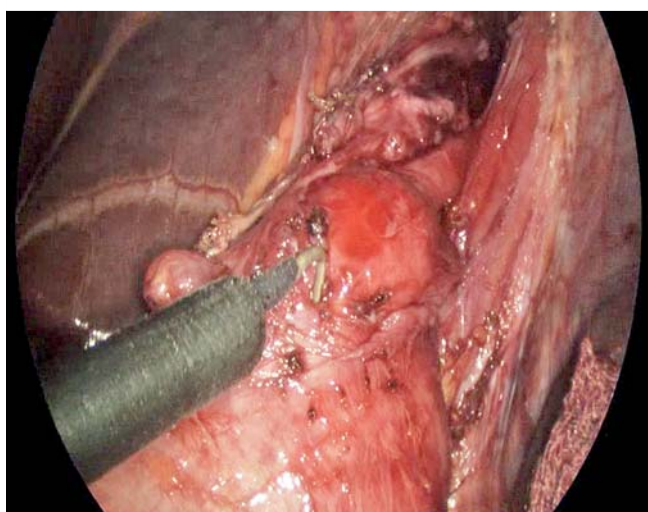
post-procedure parameters were compared using the Student's *t*-test (paired *t*-test/Wilcoxon, where applicable) for continuous variables and the Chi-squared test for categorical variables. Chi-squared test/Fisher's exact test and *t*-test/Mann-Whitney U test were used to compare patient and procedural characteristics for the two groups. A univariate and multivariate analysis taking into consideration the factors of age, gender, pre-procedure Eckardt stage, prior therapy, residual pressure, and the procedure type were performed. Statistical significance was based on two-sided design-based tests evaluated at  $\alpha=0.05$ . Statistical analysis was performed using STATA v13.

### Results

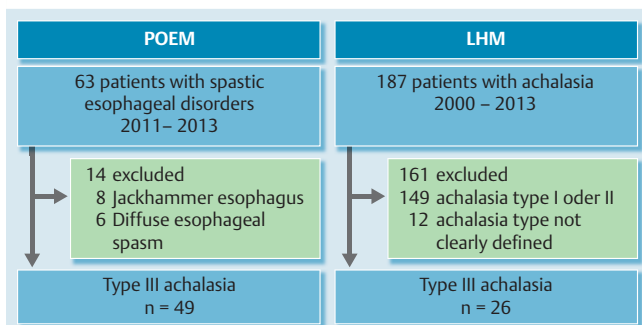
There were 63 patients that underwent POEM for spastic esophageal disorders with 14 being excluded (Jackhammer, 8; diffuse esophageal spasm, 6) leaving 49 suitable for analysis. There were 187 patients that underwent LHM for achalasia with 161 being excluded (149 had achalasia subtype I or II and 12 had achalasia subtype not specified). Therefore, there were 26 patients in this cohort suitable for analysis (Fig. 5). The baseline demographics were similar between the POEM and LHM group with respect to age (58.3 years vs 51.6 years;  $P=0.15$ ) and sex (women: 40.8% vs 50.0%,  $P=0.45$ ) (Table 2).

There were statistically significant differences between the two groups with regard to prior therapies with 38.8% of patients in the POEM cohort undergoing prior therapy as opposed to 72% of patients in the LHM cohort ( $P<0.01$ ). There were 4 patients (8.2%) in the POEM cohort that had been treated previously with LHM (Table 2).

There was no statistically significant difference in the LES mean residual pressure at baseline between POEM and LHM (34.4 mmHg vs 36.3 mmHg;  $P=0.79$ ). However, statistically significant differences in the pre-procedure Eckardt symptom stage were noted between the two groups with patients in LHM having a



**Fig. 4** Intraoperative image of the myotomy during transabdominal laparoscopic Heller myotomy.



**Fig. 5** Flow diagram depicting the criteria used to include patients suitable for analysis.

higher mean baseline Eckardt stage than those in POEM (2.85 vs 2.37;  $P < 0.01$ ) (Table 2).

The primary outcome of clinical response was statistically significant more frequently with POEM than with LHM (98.0% vs 80.8%;  $P = 0.01$ ) at a mean follow-up of 8.6 months vs 21.5 months, respectively ( $P < 0.01$ ). One patient in the POEM cohort was deemed a clinical failure because they had an Eckardt symptom of stage II on follow-up despite resolution of their pre-procedure manometry abnormality. There were five patients (19.2%) in the LHM cohort who did not meet the primary outcome. Two patients (7.7%) were subsequently treated successfully with a second LHM and the other went onto have an esophagectomy after failing Botox and pneumatic dilation. The other three patients, despite having an Eckardt stage II on follow-up, have received no further intervention (Table 3).

Regarding secondary outcomes, the median length of myotomy was twice as long with POEM as compared to LHM (16 cm vs 8 cm;  $P < 0.01$ ). Despite the statistically significant longer myotomy, the median procedure time was significantly shorter in the POEM cohort (102 min vs 264 min;  $P < 0.01$ ) (Table 3). There was no statistically significant difference in the mean length of stay between the POEM and LHM cohorts (3.3 days vs 3.2 days;  $P = 0.68$ ). The overall rate of adverse events was statistically significantly higher in the LHM cohort (27.0% vs 6%;  $P = 0.01$ ). Additionally, 6/7 adverse events in the LHM cohort were moderate grade as compared to 1/3 in the POEM cohort. The moderate adverse events in the LHM were: ileus (3/6), wound infection (1/6), arrhythmia (1/6), and urinary tract infection (1/6). The one moderate adverse event in the POEM group was a pulmonary embolus. There were no severe adverse events noted in either group (Table 3). There was no significant difference between POEM and LHM in terms

of ongoing requirement for PPI (38.8% vs 46.1%;  $P = 0.7$ ), respectively.

On univariate analysis, LHM patients had statistically significant more odds of being a clinical failure compared to POEM patients (OR, 11.43; 95%CI, 1.26–103.91;  $P = 0.031$ ). However, on multivariate analysis, there was no statistical difference found, although a trend to significance was noted (OR, 11.32; 95%CI, 0.86–151.39;  $P = 0.06$ ).

## Discussion

There is sufficient evidence to suggest that the subtype of achalasia is an independent predictor of successful outcome after therapy [2, 6, 10]. Type III achalasia is characterized by well-defined, lumen-obliterating spastic contractions in the mid and distal esophagus. In this subtype of achalasia patients, reducing the LES pressure may not suffice to control symptoms, because the segment affected by the spastic motility extends well above the EGJ [2]. There is no consensus to guide the clinician as to the optimal treatment modality for patients with type III achalasia. Oral pharmacological therapies have dismal response rates with a paucity of data for their use specifically in type III achalasia. Furthermore, these agents are short acting and associated with side effects, including headache and hypotension often limiting their use [17]. Hence, these agents are commonly reserved for patients who are not suitable to undergo more definitive therapies or have failed botulinum toxin injections [18]. Botox injections are also associated with poor outcomes with Pandolfino et al. reporting therapeutic success of 9% in treatment naïve patients [10]. Pneumatic dilation has also been shown to be essentially ineffective in type III achalasia patients with response rates between 33% to 40% [6, 19].

LHM is an established treatment of type III achalasia with success rates far superior to that of the aforementioned less invasive therapies. Salvador et al. reported in their series of 23 patients a clinical response rate of 69.3% at a mean follow-up of 31 months [5]. Rohof et al. reported an 86% response rate in their series of 18 patients at a mean follow-up of 43 months [6]. A long surgical myotomy extending from the LES proximally onto the esophageal body has been used to treat patients with spastic esophageal disorders. Leconte et al. reported in a series of 20 patients who underwent an extended modified transabdominal LHM for DES (14 cm on the esophagus and 2 cm below the EGJ) that dysphagia and chest pain were significantly improved after a median follow-up of 50 months [20].

	POEM n=49	LHM n=26	P value
Median length of myotomy (cm)	16 (7–26)	8 (6–10)	<0.01
Median procedure time (min)	102 (43–345)	264 (189–331)	<0.01
Adverse events, n (%)			
Mild	2 (4)	1 (4)	1
Moderate	1 (2)	6 (23)	<0.01
Total	3 (6)	7 (27)	<0.01
Mean length of stay, days (SD)	3.3 (1.9)	3.2 (2.3)	0.68
PPI therapy, n (%)	19 (38.8)	12 (46.1)	0.7
Eckardt stage II or III, n (%)	1 (2.0)	5 (19.2)	0.01
Need for subsequent therapy, n (%)	0	2 (7.7)	0.11
Clinical response, n (%)	48 (98)	21 (80.8)	0.01
Duration of follow-up, months (SD)	8.6 (1.7)	21.5 (3.9)	<0.01

**Table 3** Procedural characteristics and outcomes

In 2010, the novel technique of POEM was introduced for esophageal achalasia [16]. Existing data suggest that this minimally invasive endoscopic approach achieves similar response to LHM in the management of achalasia [21–24]. Recent reports have also documented its success in patients with spastic esophageal disorders [25–27]. However, the specific role of POEM in the management of patients with type III achalasia is largely unknown.

Given the data suggesting the relative effectiveness of LHM in treating patients with type III achalasia, we propose POEM as a minimally invasive alternative. The primary advantage of POEM over LHM in this setting is that it allows access to the entire length of the esophagus with ease and thus, an extensive myotomy can be performed. In comparison, access to the proximal esophageal body may not always be possible through a laparoscopic transabdominal approach, which may explain the poorer response of type III achalasia patients to LHM compared to other subtypes [6, 10].

In this report, we compared the efficacy and safety of POEM to LHM specifically for the management of type III achalasia. There were 49 POEM patients included from an international multicenter database and 26 LHM patients included from a single expert center. POEM was carried out in standard fashion, however, an extensive myotomy was performed. Clinical response was significantly more frequent in the POEM cohort (98.0% vs 80.8%;  $P=0.01$ ). Additionally, POEM patients had significantly shorter procedure times despite a substantially longer length of myotomy. There was no difference in length of stay. Adverse events were significantly less common with POEM.

The high clinical response rate observed in the POEM cohort was consistent with that reported in the POEM literature for all achalasia subtypes varying from 82% to 100% [8, 14, 16, 28–30].

The median procedure times in the POEM cohort of 102 min is comparable to that reported in the International Per Oral Endoscopic Myotomy (IPOEMS) survey with a mean procedure time of 98 min [29]. This result is surprising in view of the lengthy myotomy procedure reported in this type III achalasia study. The median procedure times in the LHM cohort were substantially longer than that of the POEM cohort at 264 min. However, LHM procedure times were longer than those reported in the literature, which range from a median 125 min to 160 min [22, 23]. A potential reason for such lengthy procedure times was likely because robotic daVinci surgery was performed as opposed to the standard transabdominal laparoscopic approach [31].

In this retrospective study, the use of ongoing PPI therapy was a surrogate for symptomatic gastroesophageal reflux disease. Regarding the presence of PPI at follow-up, there was no significant difference between POEM and LHM cohorts (38.8% vs 46.1%;  $P=0.7$ ). This is in keeping with studies reporting rates of reflux with LHM plus partial fundoplication of 21% to 42% and rates of reflux with POEM reported at 20% to 46% [8, 32, 33].

POEM had a favorable adverse event profile as compared to LHM (6% vs 27%;  $P<0.01$ ). There were significantly more moderate complications reported in the LHM cohort. These complications were likely the result of the transabdominal approach with ileus occurring in 3/6 and wound infection in 1/6. The longer procedure times for LHM may have also contributed to these adverse events.

There are several limitations of this study. In this retrospective study, there were many differences that existed between the groups pre-procedurally, including a greater proportion of LHM patients who had a higher Eckardt symptom stage and had undergone prior endoscopic interventions, which may have con-

tributed to the poorer clinical response and lengthier procedure time in the LHM group, respectively. Additionally, the LHM cohort was a single-center as opposed to the multicenter POEM cohort. The diagnostic criteria used for patients (pre-2008) in the LHM group were different from the POEM cohort because of the absence of high-resolution esophageal manometry (gold standard for diagnosing type III achalasia) at that time. Furthermore, Eckardt stage as opposed to Eckardt score was used in this study as the determination of clinical symptoms was based review of the hospital medical records. However, the Eckardt stage is a validated scoring system and has been reported as the primary outcome measure in several studies [11, 14, 15]. Last, the mean length of follow-up in the LHM cohort was substantially longer at 21.5 months compared to 8.6 months in the POEM cohort, which may have biased the clinical response in favor of POEM.

In conclusion, POEM is a logical therapeutic modality for patients with type III achalasia because it allows for a longer myotomy due to the endoscopist's access to the esophageal body. This may have contributed to the superior clinical response compared to LHM in this study. POEM appears to be an effective and safe alternative to LHM in patients with type III achalasia. The advantages of POEM over LHM shown in this study must be verified in prospective randomized controlled trials.

**Competing interests:** M. Khashab is a consultant for Boston Scientific, Xlumen and Olympus America and has received research support from Cook Medical. H. Inoue is a founding member, equity holder, and consultant for Apollo Endosurgery. No other financial relationships relevant to this article were disclosed.

#### Institutions

- <sup>1</sup> Johns Hopkins Medical Institutions, Gastroenterology and Hepatology, Baltimore, Maryland, United States
- <sup>2</sup> Showa University Northern Yokohama Hospital, Digestive Disease Center, Yokohama, Japan
- <sup>3</sup> Northwestern University Feinberg School of Medicine, Department of Surgery, Chicago, Illinois, United States
- <sup>4</sup> NorthShore University Health Systems, NorthShore Center for Simulation and Innovation, Evanston, Illinois, United States
- <sup>5</sup> Winthrop University Hospital, Gastroenterology and Hepatology, Mineola, New York, United States
- <sup>6</sup> Fukuoka University Faculty of Medicine, Gastroenterology and Hepatology, Fukuoka, Japan
- <sup>7</sup> Aarhus University Hospital, Department of Surgery, Aarhus, Denmark
- <sup>8</sup> Institute of Digestive Disease, Gastroenterology and Hepatology, Shatin, Hong Kong

#### References

- <sup>1</sup> Bredenoord AJ, Fox M, Kahrilas PJ et al. Chicago classification criteria of esophageal motility disorders defined in high resolution esophageal pressure topography. *Neurogastroenterol Motil* 2012; 24: 0157–65
- <sup>2</sup> Boeckxstaens G, Zaninotto G. Achalasia and esophago-gastric junction outflow obstruction: focus on the subtypes. *Neurogastroenterol Motil* 2012; 24: 0127–31
- <sup>3</sup> Moonen A, Boeckxstaens G. Current diagnosis and management of achalasia. *J Clin Gastroenterol* 2014; 48: 484–490
- <sup>4</sup> Patti MG, Pellegrini CA, Arcerito M et al. Comparison of medical and minimally invasive surgical therapy for primary esophageal motility disorders. *Arch Surg* 1995; 130: 609–615; discussion 615–616
- <sup>5</sup> Salvador R, Costantini M, Zaninotto G et al. The preoperative manometric pattern predicts the outcome of surgical treatment for esophageal achalasia. *Journal of gastrointestinal surgery*. *J Gastrointest Surg* 2010; 14: 1635–1645
- <sup>6</sup> Rohof WO, Salvador R, Annese V et al. Outcomes of treatment for achalasia depend on manometric subtype. *Gastroenterology* 2013; 144: 718–725; quiz e713–714

- 7 Pasricha PJ, Hawari R, Ahmed I et al. Submucosal endoscopic esophageal myotomy: a novel experimental approach for the treatment of achalasia. *Endoscopy* 2007; 39: 761–764
- 8 Stavropoulos SN, Desilets DJ, Fuchs KH et al. Per-oral endoscopic myotomy white paper summary. *Surg Endosc* 2014; 28: 2005–2019
- 9 Roman S, Kahrilas PJ. Management of spastic disorders of the esophagus. *Gastroenterol Clin North Am* 2013; 42: 27–43
- 10 Pandolfino JE, Kwiatek MA, Nealis T et al. Achalasia: a new clinically relevant classification by high-resolution manometry. *Gastroenterology* 2008; 135: 1526–1533
- 11 Gockel I, Junginger T. The value of scoring achalasia: a comparison of current systems and the impact on treatment—the surgeon's viewpoint. *Am Surg* 2007; 73: 327–331
- 12 Cotton PB, Eisen GM, Aabakken L et al. A lexicon for endoscopic adverse events: report of an ASGE workshop. *Gastrointest Endosc* 2010; 71: 446–454
- 13 Eckardt AJ, Eckardt VF. Treatment and surveillance strategies in achalasia: an update. *Nat Rev Gastroenterol Hepatol* 2011; 8: 311–319
- 14 Swanstrom LL, Kurian A, Dunst CM et al. Long-term outcomes of an endoscopic myotomy for achalasia: the POEM procedure. *Ann Surg* 2012; 256: 659–667
- 15 Ujiki MB, Yetasook AK, Zapf M et al. Peroral endoscopic myotomy: a short-term comparison with the standard laparoscopic approach. *Surgery* 2013; 154: 893–897; discussion 897–900
- 16 Inoue H, Minami H, Kobayashi Y et al. Peroral endoscopic myotomy (POEM) for esophageal achalasia. *Endoscopy* 2010; 42: 265–271
- 17 Bortolotti M, Mari C, Lopilato C et al. Effects of sildenafil on esophageal motility of patients with idiopathic achalasia. *Gastroenterology* 2000; 118: 253–257
- 18 Vaezi MF, Pandolfino JE, Vela MF. ACG clinical guideline: diagnosis and management of achalasia. *Am J Gastroenterol* 2013; 108: 1238–1249; quiz 1250
- 19 Pratap N, Kalapala R, Darisetty S et al. Achalasia cardia subtyping by high-resolution manometry predicts the therapeutic outcome of pneumatic balloon dilatation. *J Neurogastroenterol Motil* 2011; 17: 48–53
- 20 Leconte M, Douard R, Gaudric M et al. Functional results after extended myotomy for diffuse oesophageal spasm. *Br J Surg* 2007; 94: 1113–1118
- 21 Teitelbaum EN, Rajeswaran S, Zhang R et al. Peroral esophageal myotomy (POEM) and laparoscopic Heller myotomy produce a similar short-term anatomic and functional effect. *Surgery* 2013; 154: 885–891; discussion 891–892
- 22 Hungness ES, Teitelbaum EN, Santos BF et al. Comparison of perioperative outcomes between peroral esophageal myotomy (POEM) and laparoscopic Heller myotomy. *J Gastrointest Surg* 2013; 17: 228–235
- 23 Bhayani NH, Kurian AA, Dunst CM et al. A comparative study on comprehensive, objective outcomes of laparoscopic Heller myotomy with per-oral endoscopic myotomy (POEM) for achalasia. *Ann Surg* 2014; 259: 1098–1103
- 24 Teitelbaum EN, Boris L, Arafat FO et al. Comparison of esophagogastric junction distensibility changes during POEM and Heller myotomy using intraoperative FLIP. *Surg Endosc* 2013; 27: 4547–4555
- 25 Shiwaku H, Inoue H, Beppu R et al. Successful treatment of diffuse esophageal spasm by peroral endoscopic myotomy. *Gastrointest Endosc* 2013; 77: 149–150
- 26 Khashab MA, Saxena P, Kumbhari V et al. Peroral endoscopic myotomy as a platform for the treatment of spastic esophageal disorders refractory to medical therapy (with video). *Gastrointest Endosc* 2014; 79: 136–139
- 27 Minami H, Isomoto H, Yamaguchi N et al. Peroral endoscopic myotomy (POEM) for diffuse esophageal spasm. *Endoscopy* 2014; 46: E79–81
- 28 Ren Z, Zhong Y, Zhou P et al. Perioperative management and treatment for complications during and after peroral endoscopic myotomy (POEM) for esophageal achalasia (EA) (data from 119 patients). *Surg Endosc* 2012; 26: 3267–3272
- 29 Stavropoulos SN, Modayil RJ, Friedel D et al. The International Per Oral Endoscopic Myotomy Survey (IPOEMS): a snapshot of the global POEM experience. *Surg Endosc* 2013; 27: 3322–3338
- 30 Von Renteln D, Fuchs KH, Fockens P et al. Peroral endoscopic myotomy for the treatment of achalasia: an international prospective multicenter study. *Gastroenterology* 2013; 145: 309–311.e1–3
- 31 Huffman LC, Pandalai PK, Boulton BJ et al. Robotic Heller myotomy: a safe operation with higher postoperative quality-of-life indices. *Surgery* 2007; 142: 613–618; discussion 618–620
- 32 Khajanchee YS, Kanneganti S, Leatherwood AE et al. Laparoscopic Heller myotomy with Toupet fundoplication: outcomes predictors in 121 consecutive patients. *Arch Surg* 2005; 140: 827–833; discussion 833–824
- 33 Rawlings A, Soper NJ, Oelschlager B et al. Laparoscopic Dor vs Toupet fundoplication following Heller myotomy for achalasia: results of a multicenter, prospective, randomized-controlled trial. *Surg Endosc* 2012; 26: 18–26