

THE LANCET

Gastroenterology & Hepatology

Supplementary appendix

This appendix formed part of the original submission and has been peer reviewed. We post it as supplied by the authors.

Supplement to: GBD 2017 Pancreatic Cancer Collaborators. The global, regional, and national burden of pancreatic cancer and its attributable risk factors in 195 countries and territories, 1990–2017: a systematic analysis for the Global Burden of Disease Study 2017. *Lancet Gastroenterol Hepatol* 2019; published online Oct 21. [http://dx.doi.org/10.1016/S2468-1253\(19\)30347-4](http://dx.doi.org/10.1016/S2468-1253(19)30347-4).

Supplementary appendix

Supplement to: The global, regional, and national burden of pancreatic cancer in 195 countries and territories, 1990–2017: a systematic analysis for the Global Burden of Disease Study 2017

Table of Contents:

Appendix Figures

Appendix Figure 1: The trend of age-standardised rates of deaths (a) and incidence (b) due to pancreatic cancer across Global Burden of Disease super-regions from 1990 to 2017 in both sexes.

Appendix Figure 2: The age-standardised rates of (a) deaths and (b) incidence due to pancreatic cancer across SDI quintiles from 1990 to 2017 in both sexes. SDI=Socio-demographic Index.

Appendix Figure 3: The age-standardised incidence rates of pancreatic cancer across 21 regions by SDI in both sexes in 2017. SDI=Socio-demographic Index.

Appendix Figure 4: The age-standardised DALY rates of pancreatic cancer across 21 regions by SDI in both sexes in 2017. DALYs=disability-adjusted life-years. SDI=Socio-demographic Index.

Appendix Figure 5: The age-standardised DALY rates of pancreatic cancer across 195 countries and territories by SDI in both sexes in 2017. DALYs=disability-adjusted life-years. SDI: Socio-Demographic Index.

Appendix Figure 6: Global number of YLLs and YLDs and age-standardised rate of YLLs and YLDs per 100 000 due to pancreatic cancer by age, 2017; Dotted and dashed lines indicate 95% upper and lower uncertainty intervals, respectively. YLDs=years lived with disability. YLLs=years of life lost.

Appendix Figure 7: Fraction and UIs of pancreatic cancer age-standardised deaths attributable to smoking, high fasting plasma glucose, and high body-mass index (a) by GBD region, and (b) for males and females, 2017. A supplement to figure 4 in the manuscript, which does not include UIs. GBD=Global Burden of Disease. UI=uncertainty interval.

Appendix Tables

Appendix Table 1: Sequelae for pancreatic cancer and associated disability weights from GBD 2017. GBD=Global Burden of Disease.

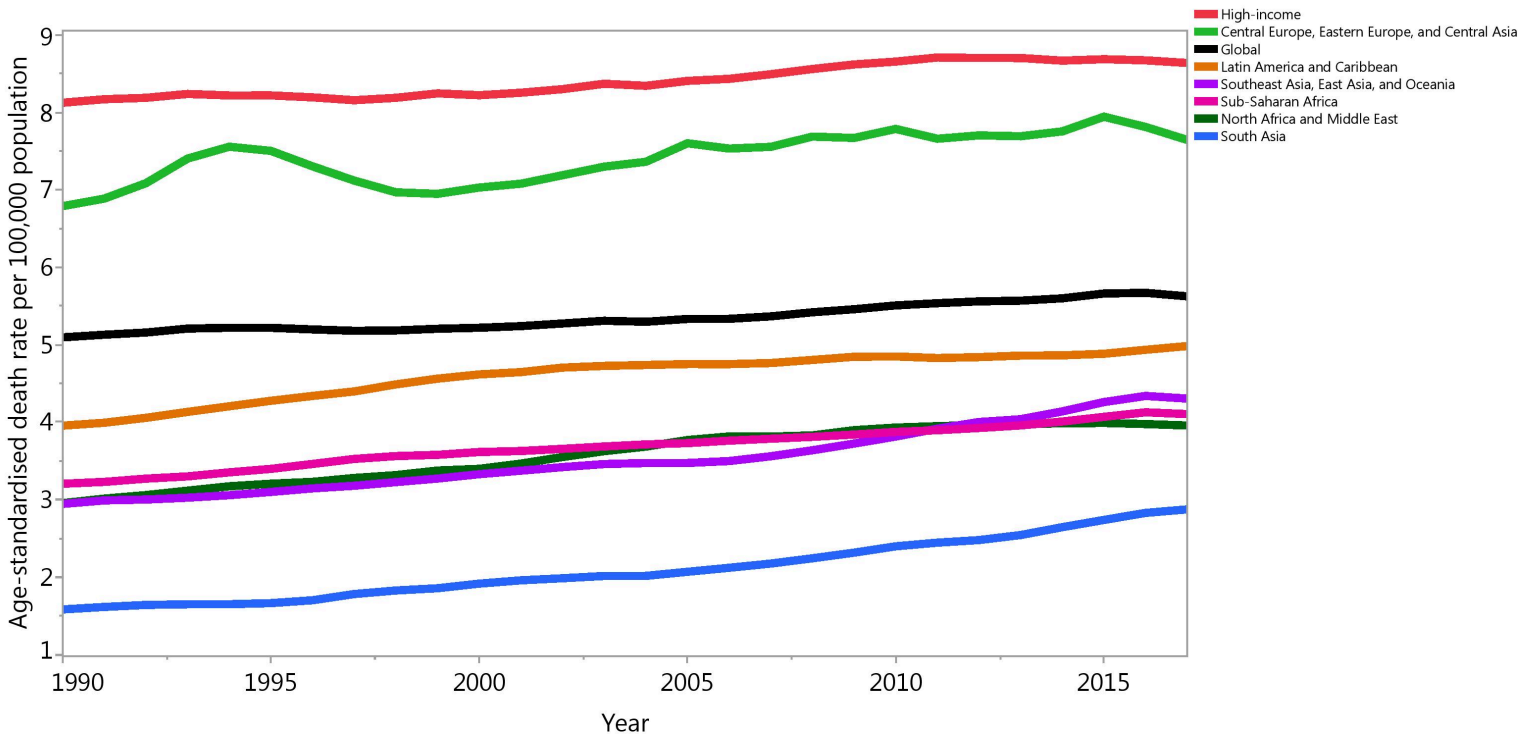
Appendix Table 2: Deaths from pancreatic cancer in 1990 and 2017 for both sexes and percentage change of age-standardised rates by location.

Appendix Table 3: Incident cases of pancreatic cancer in 1990 and 2017 for both sexes and percentage change of age-standardised rates by location.

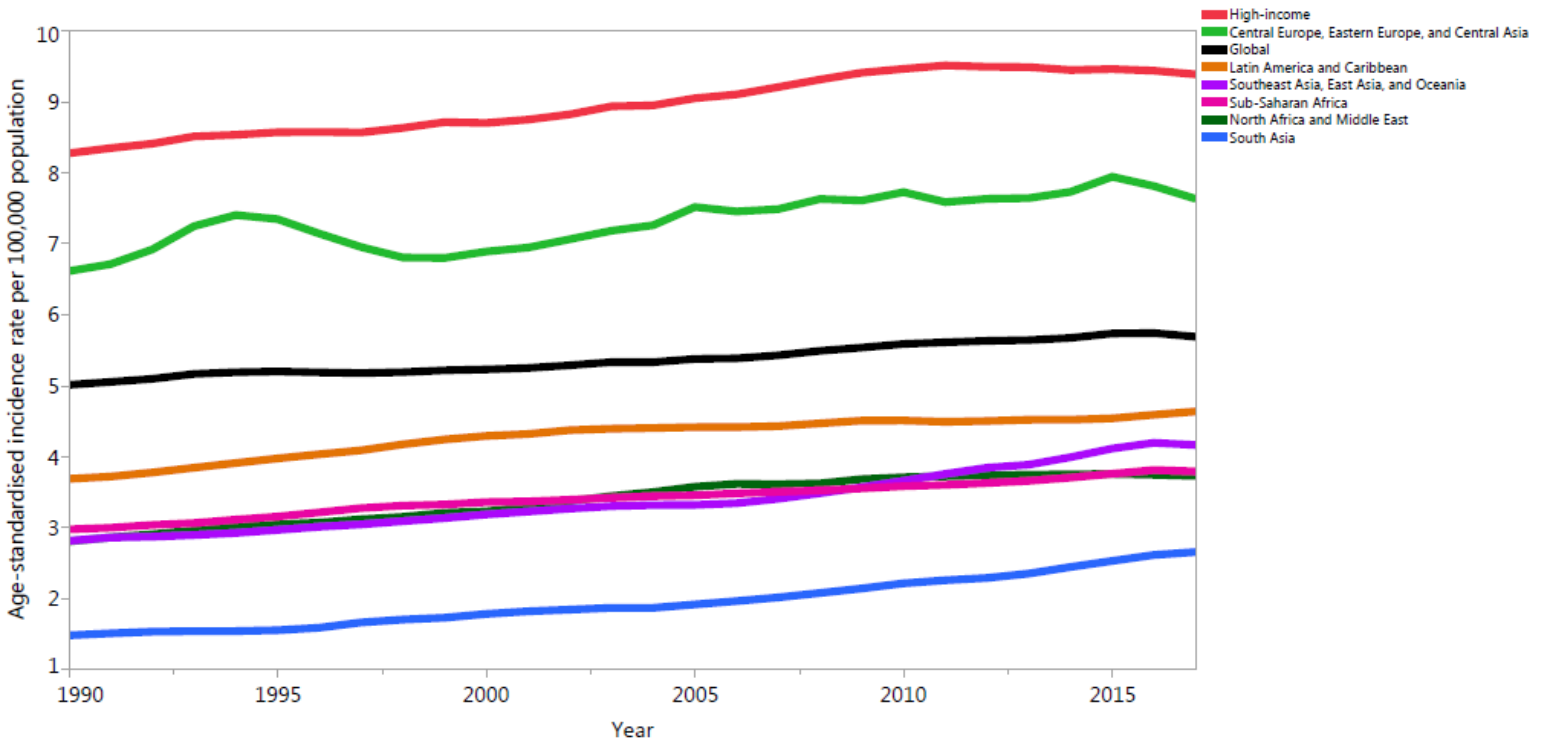
Appendix Table 4: DALYs from pancreatic cancer in 1990 and 2017 for both sexes and percentage change of age-standardised rates by location. DALYs=disability-adjusted life-years.

Appendix Figure 1: The trend of age-standardised rates of deaths (a) and incidence (b) due to pancreatic cancer across Global Burden of Disease super-regions from 1990 to 2017 in both sexes.

Appendix Figure 1a



Appendix Figure 1b



Appendix Figure 2: The age-standardised rates of a) deaths and b) incidence due to pancreatic cancer across SDI quintiles from 1990 to 2017 in both sexes. SDI=Socio-demographic Index.

Figure 2a

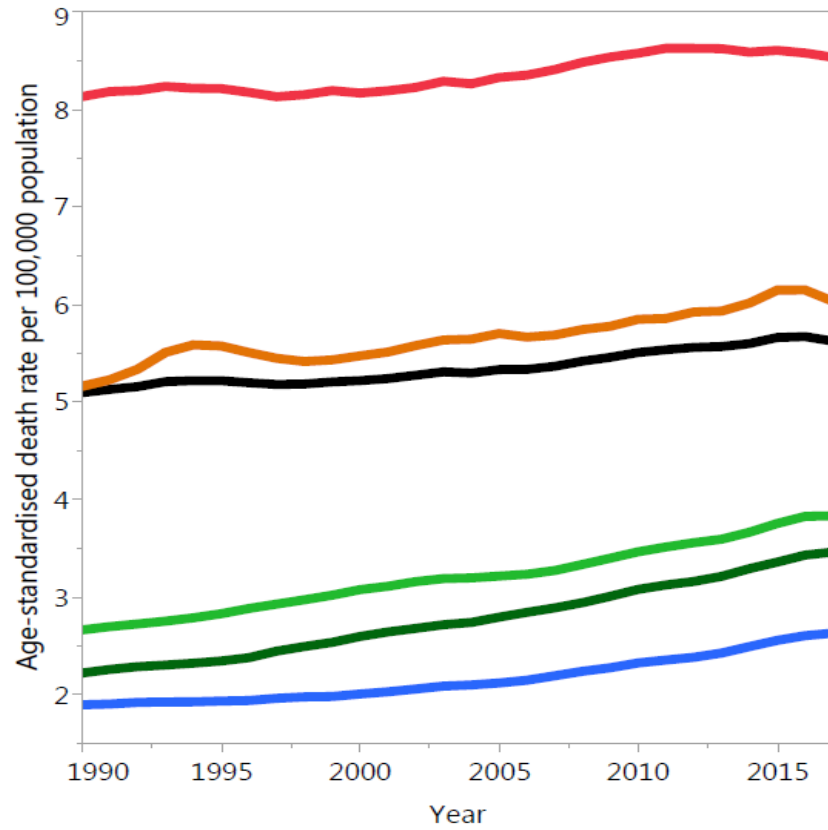
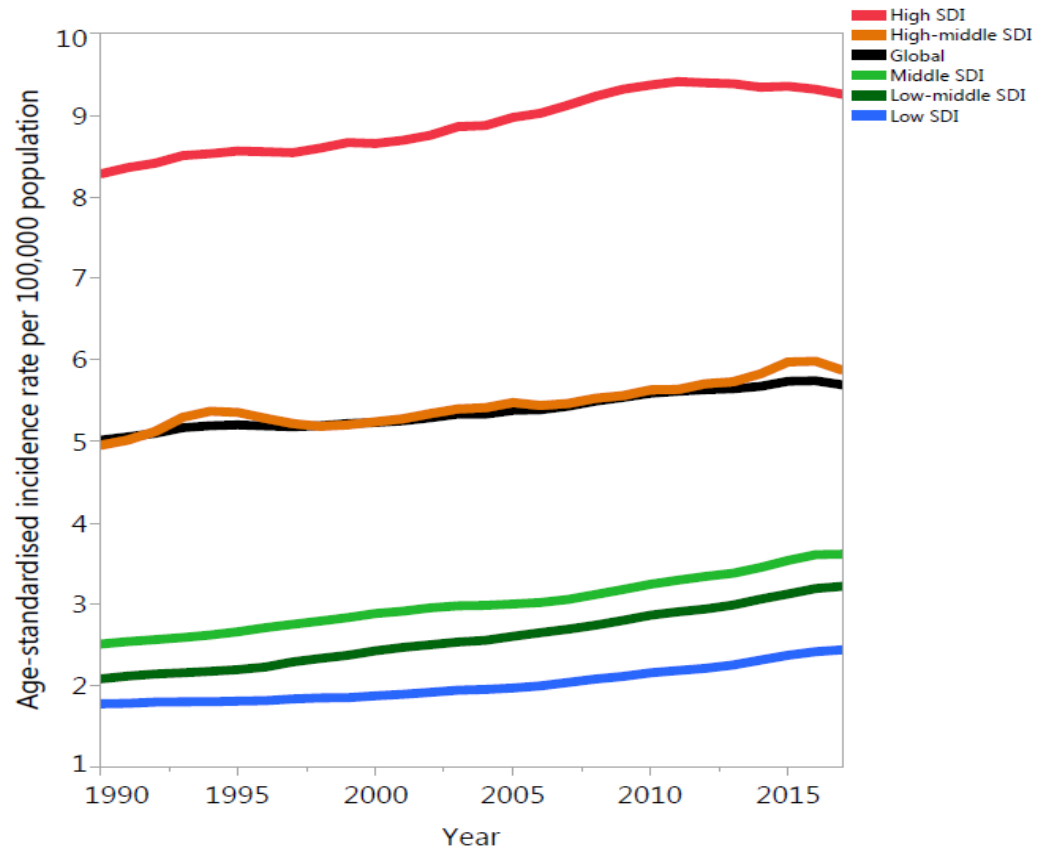
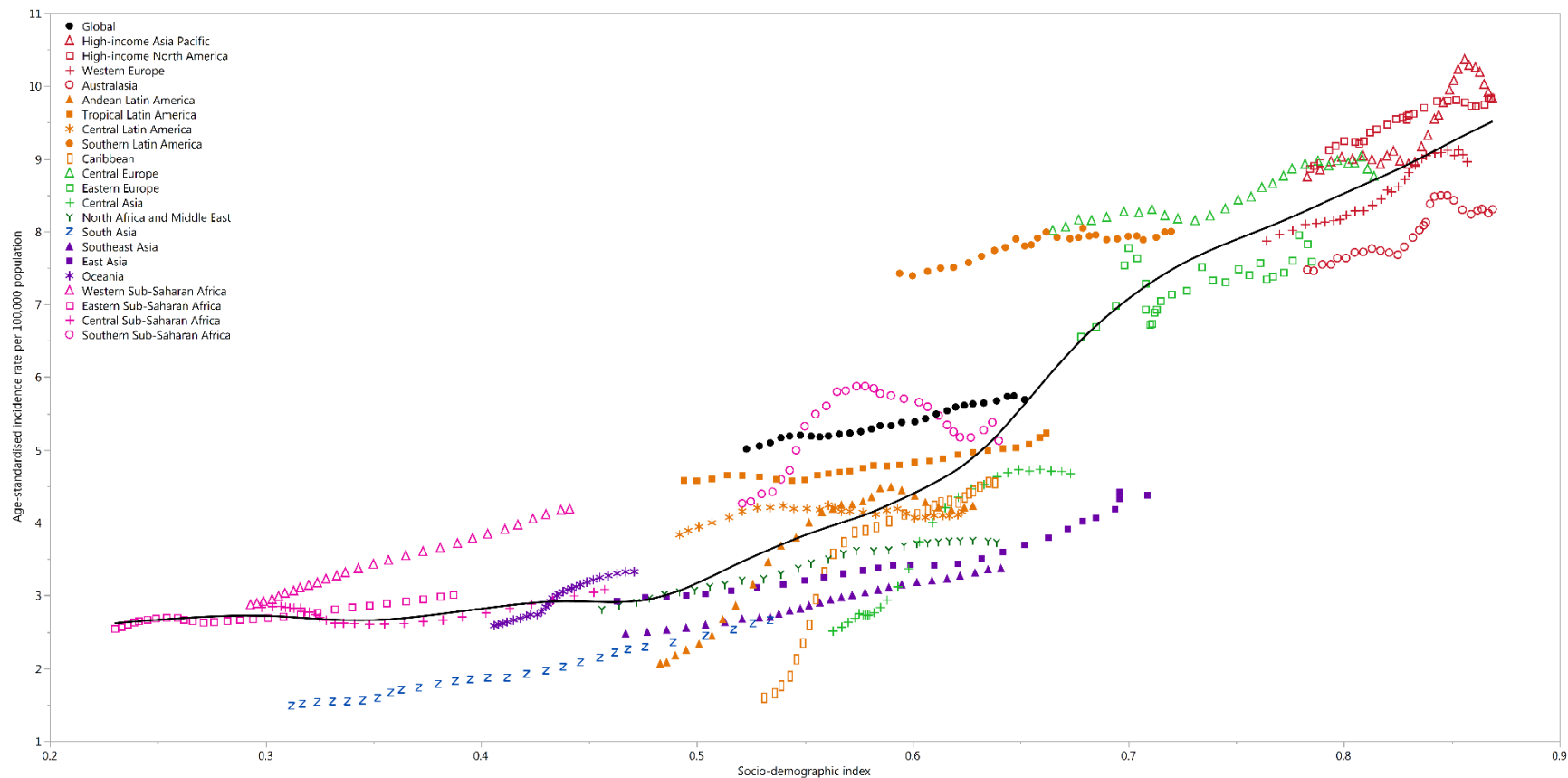


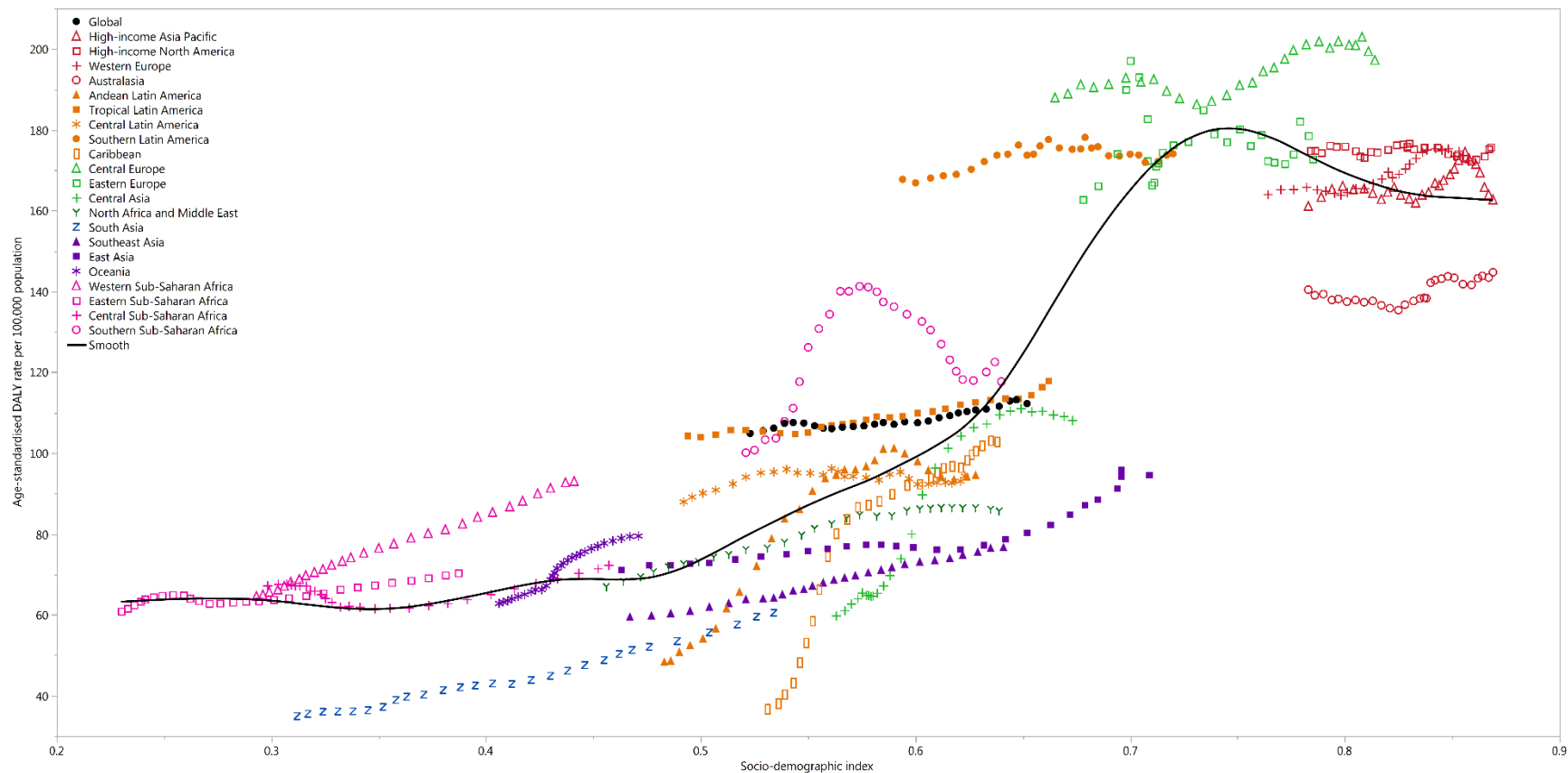
Figure 2b



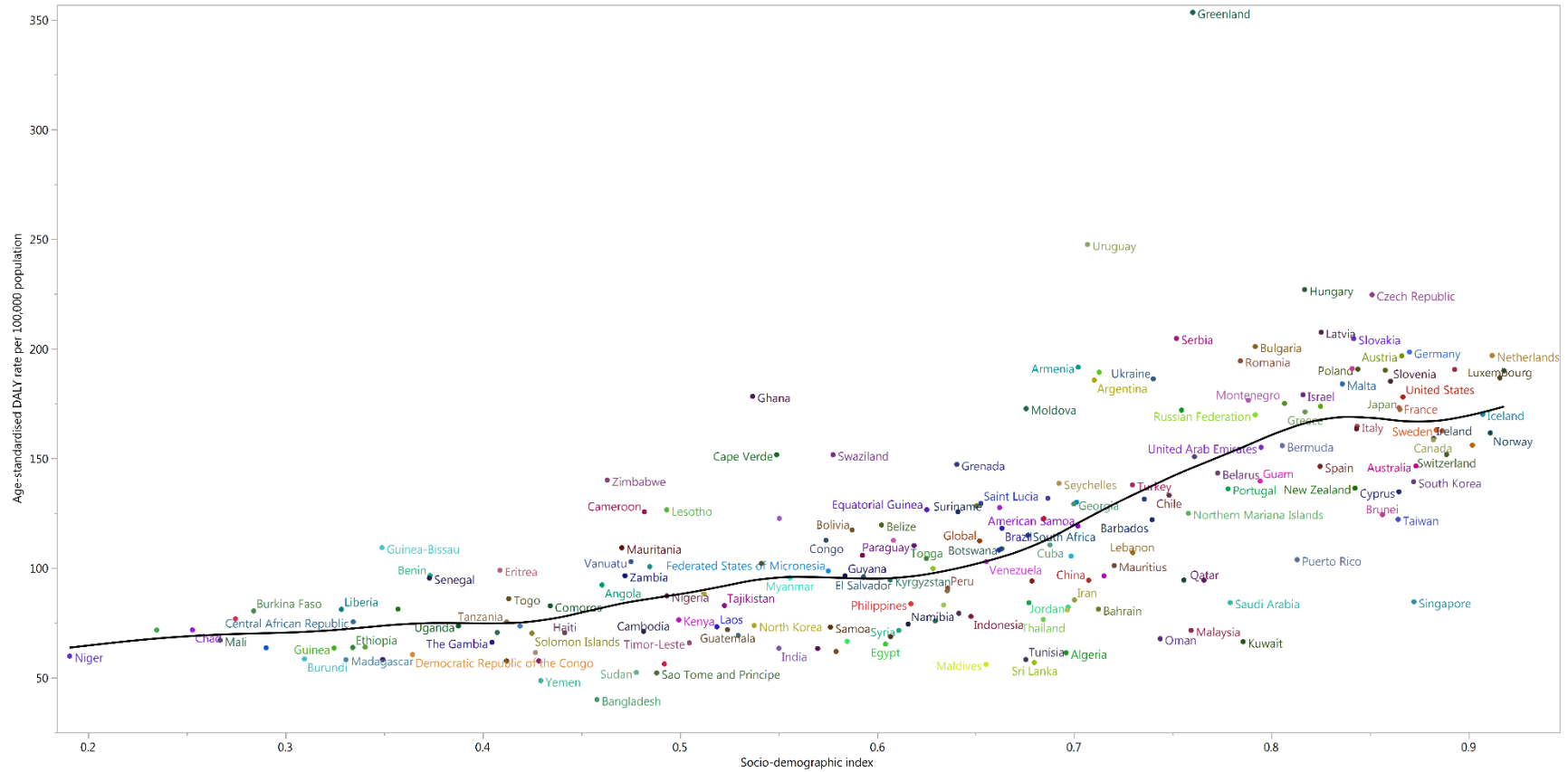
Appendix Figure 3: The age-standardised incidence rates of pancreatic cancer across 21 regions by SDI in both sexes in 2017. SDI=Socio-demographic Index.



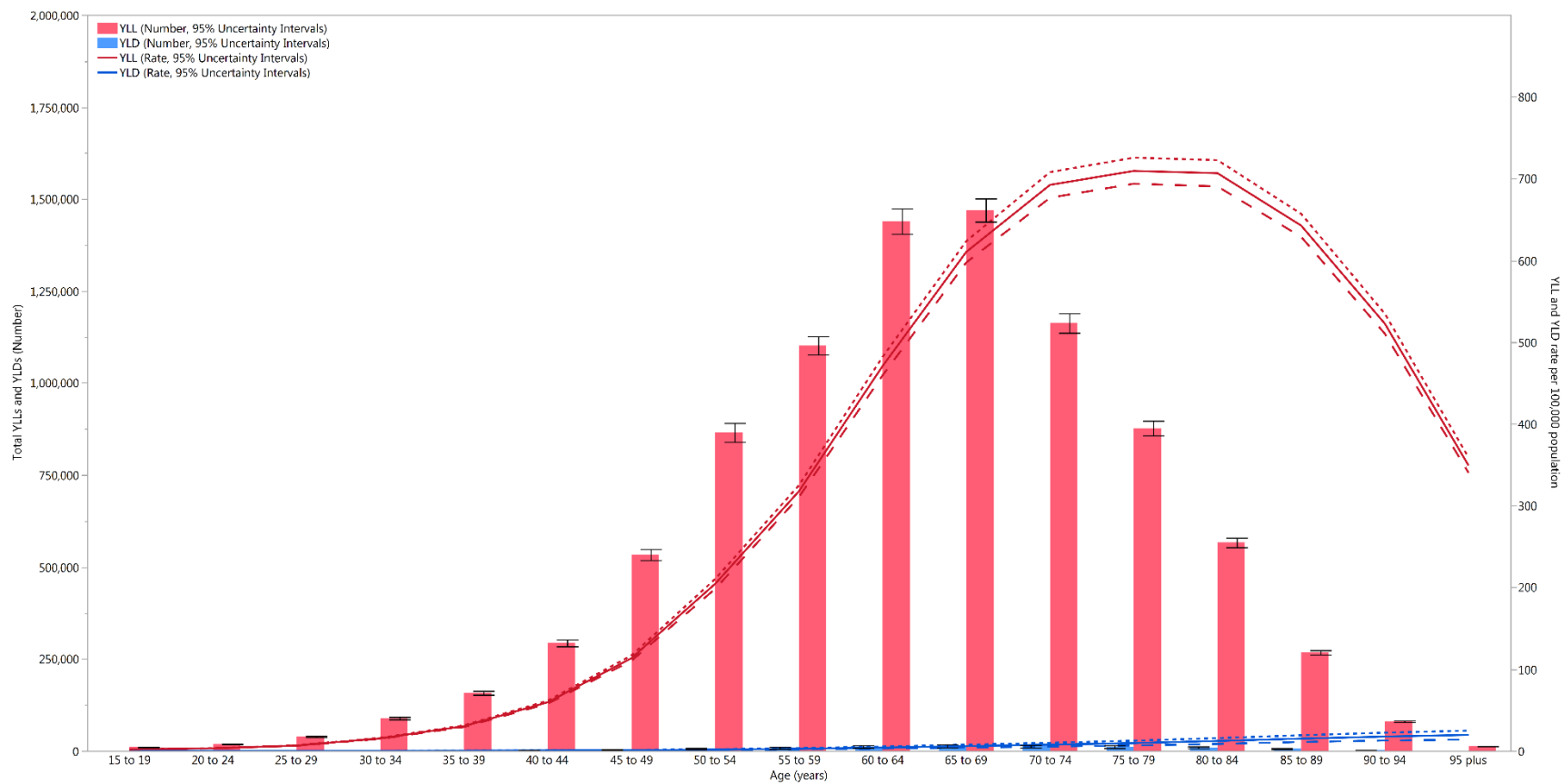
Appendix Figure 4: The age-standardised DALY rates of pancreatic cancer across 21 regions by SDI in both sexes in 2017. DALYs=disability-adjusted life-years. SDI=Socio-demographic Index.



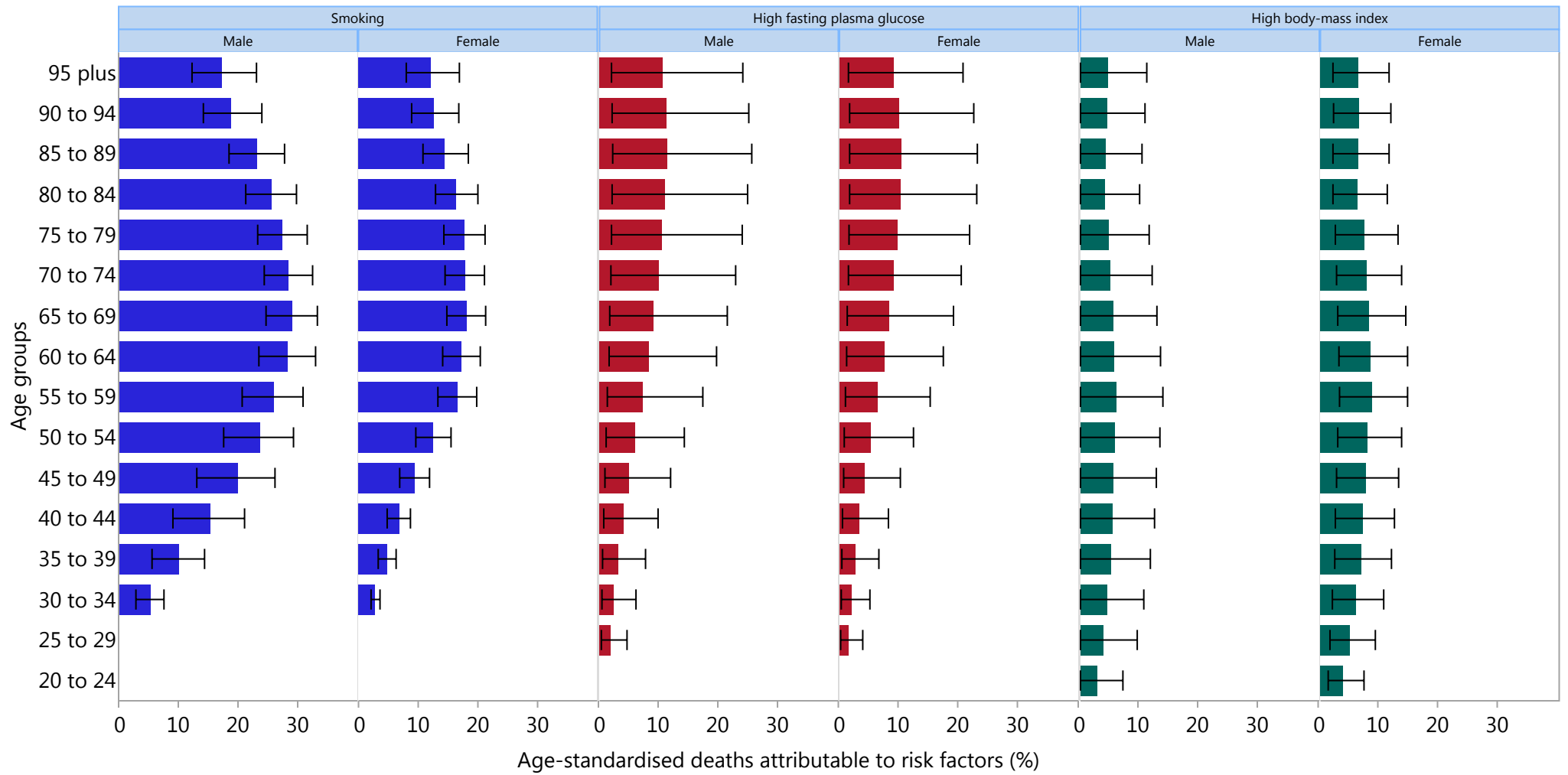
Appendix Figure 5: The age-standardised DALY rates of pancreatic cancer across 195 countries and territories by SDI in both sexes in 2017. DALYs=disability-adjusted life-years. SDI: Socio-demographic Index.



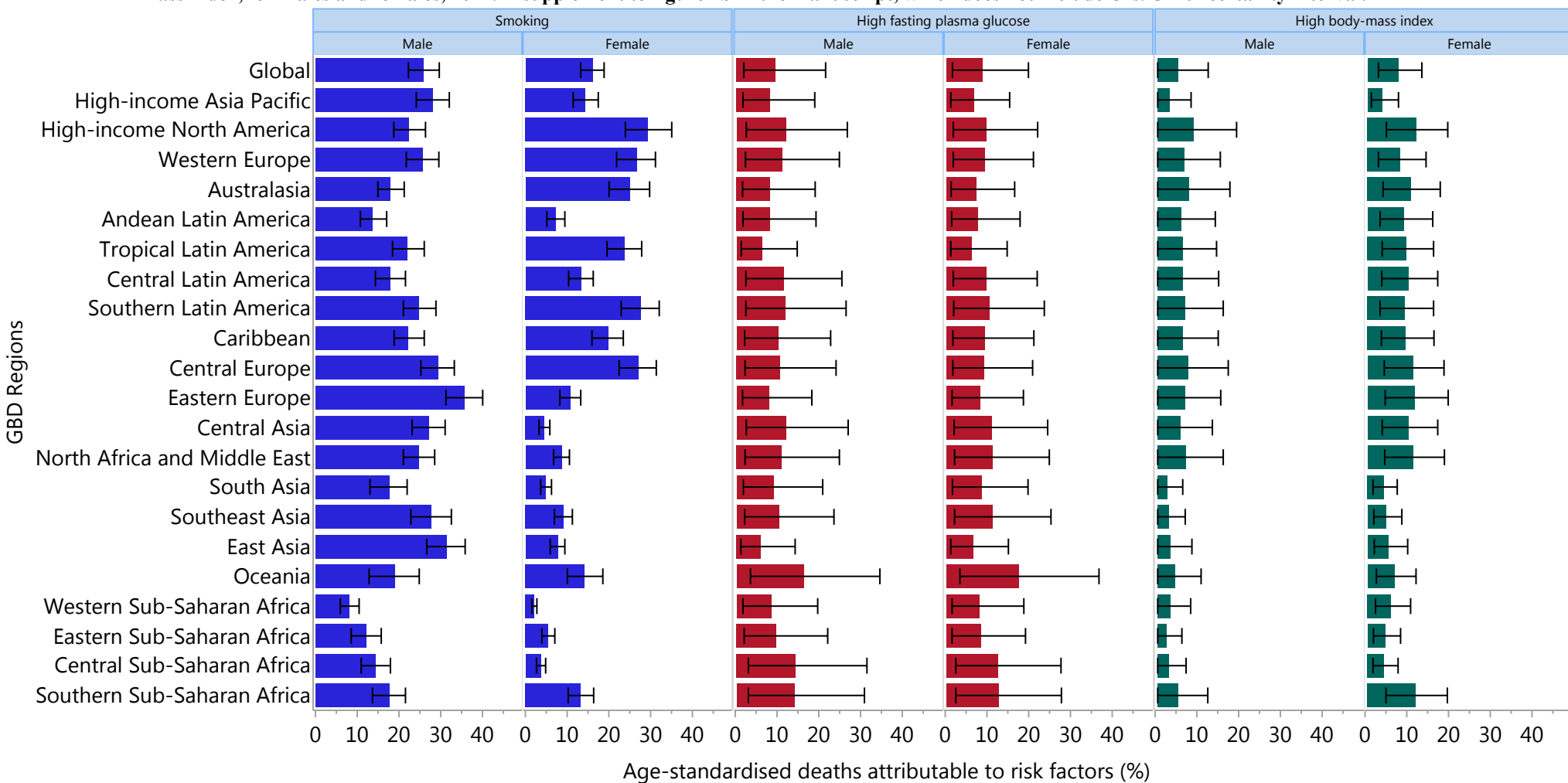
Appendix Figure 6: Global number of YLLs and YLDs and age-standardised rate of YLLs and YLDs per 100 000 due to pancreatic cancer by age, 2017; Dotted and dashed lines indicate 95% upper and lower uncertainty intervals, respectively. YLDs=years lived with disability. YLLs=years of life lost.



Appendix Figure 7a: Fraction and UIs of pancreatic cancer age-standardised deaths attributable to smoking, high fasting plasma glucose, and high body-mass index by GBD region, 2017. A supplement to figure 4a in the manuscript, which does not include UIs. GBD=Global Burden of Disease. UI=uncertainty interval.



Appendix Figure 7b: Fraction and UIs of pancreatic cancer age-standardised deaths attributable to smoking, high fasting plasma glucose, and high body-mass index, for males and females, 2017. A supplement to figure 4b in the manuscript, which does not include UIs. UI=uncertainty interval.



Appendix Table 1: Sequelae for pancreatic cancer and associated disability weights from GBD 2017

| Sequela | Health state name | Lay description | Disability weight (95% UI) |
|-------------------------------------|---|---|---------------------------------------|
| Diagnosis and primary therapy phase | Cancer, diagnosis and primary therapy | Has pain, nausea, fatigue, weight loss, and high anxiety. | 0.288 (0.193–0.399) |
| Controlled phase | Generic uncomplicated disease: worry and daily medication | Has a chronic disease that requires medication every day and causes some worry but minimal interference with daily activities. | 0.049 (0.031–0.072) |
| Metastatic phase | Cancer, metastatic | Has severe pain, extreme fatigue, weight loss, and high anxiety. | 0.451 (0.307–0.600) |
| Terminal phase | Terminal phase, with medication (for cancers, end-stage kidney/liver disease) | Has lost a lot of weight and regularly uses strong medication to avoid constant pain. The person has no appetite, feels nauseated, and needs to spend most of the day in bed. | 0.540 (0.377–0.687) |

GBD=Global Burden of Disease.

Appendix Table 2: Deaths from pancreatic cancer in 1990 and 2017 for both sexes and percentage change of age-standardised rates by location

| | 1990 | | 2017 | | Percentage change in age-standardised rates between 1990 and 2017 (95% UI) |
|----------------------------------|----------------------------|----------------------|----------------------------|--------------------|--|
| | Counts (95% UI) | Rate (95% UI) | Counts (95% UI) | Rate (95% UI) | |
| Global | 195861 (192966, 199542) | 5.1 (5, 5.2) | 441083 (432833, 448960) | 5.6 (5.5, 5.7) | 10.4 (7.0, 13.0) |
| High SDI | 106362 (105544, 107136) | 8.1 (8.0, 8.2) | 196275 (192396, 200659) | 8.5 (8.4, 8.7) | 5.0 (2.8, 7.4) |
| High-middle SDI | 47566 (46099, 48993) | 5.2 (5.1, 5.3) | 106870 (103691, 110011) | 6.0 (5.9, 6.2) | 16.9 (11.8, 21.7) |
| Middle SDI | 23995 (23326, 24700) | 2.7 (2.6, 2.8) | 81186 (77506, 84307) | 3.8 (3.7, 4.0) | 43.9 (36.0, 50.6) |
| Low-middle SDI | 11651 (10829, 12592) | 2.2 (2.1, 2.3) | 38096 (36086, 40853) | 3.5 (3.3, 3.7) | 55.8 (41.8, 68.1) |
| Low SDI | 5760 (5000, 7106) | 1.9 (1.6, 2.3) | 16979 (15706, 18236) | 2.6 (2.4, 2.8) | 38.7 (19.0, 57.5) |
| High-income North America | 31020 (30681, 31305) | 8.4 (8.3, 8.5) | 54590 (53258, 56194) | 8.7 (8.5, 9.0) | 3.2 (0.3, 6.9) |
| Canada | 3017 (2946, 3088) | 9 (8.8, 9.2) | 5542 (5152, 5950) | 8 (7.5, 8.6) | -11.2 (-17.4, -4.5) |
| Greenland | 6 (6, 7) | 19.7 (17.8, 21.8) | 11 (10, 12) | 17.4 (15.8, 19) | -12.1 (-23.1, 1.5) |
| USA | 27996 (27673, 28257) | 8.4 (8.3, 8.5) | 49036 (47847, 50521) | 8.8 (8.6, 9.1) | 4.8 (1.7, 8.7) |
| Australasia | 1678 (1641, 1716) | 6.9 (6.8, 7.1) | 3618 (3329, 3918) | 7.3 (6.7, 7.9) | 5.1 (-4, 14.4) |
| Australia | 1400 (1365, 1434) | 7 (6.8, 7.1) | 3082 (2797, 3387) | 7.4 (6.7, 8.1) | 5.8 (-4.5, 16.9) |
| New Zealand | 278 (267, 291) | 6.8 (6.6, 7.1) | 536 (500, 577) | 6.9 (6.4, 7.4) | 0.7 (-6.7, 8.7) |
| High-income Asia-Pacific | 16064 (15848, 16273) | 8 (7.9, 8.1) | 40359 (39113, 41673) | 8.5 (8.2, 8.8) | 6.6 (3.1, 10.4) |
| Brunei | 4 (4, 5) | 4.7 (4.1, 5.4) | 16 (15, 18) | 5.8 (5.2, 6.4) | 22.7 (0.8, 44.8) |
| Japan | 14001 (13822, 14185) | 8.1 (8, 8.2) | 34050 (33053, 35145) | 8.9 (8.6, 9.3) | 9.8 (6.4, 13.6) |
| Singapore | 80 (76, 85) | 3.6 (3.5, 3.8) | 279 (257, 305) | 4.1 (3.8, 4.5) | 13.6 (3.2, 26) |
| South Korea | 1978 (1911, 2046) | 6.8 (6.5, 7) | 6014 (5562, 6527) | 7.1 (6.6, 7.7) | 4.8 (-3.7, 14.1) |
| Western Europe | 48775 (48267, 49311) | 8.1 (8, 8.1) | 81449 (78708, 84439) | 8.7 (8.4, 9) | 7.6 (3.8, 11.8) |
| Andorra | 5 (4, 6) | 8.1 (6.3, 9.6) | 11 (8, 13) | 8 (6.1, 9.7) | -1.4 (-20.7, 21.2) |
| Austria | 1136 (1101, 1172) | 9.2 (8.9, 9.5) | 1809 (1695, 1941) | 9.9 (9.3, 10.6) | 7.8 (0.2, 16.3) |
| Belgium | 1372 (1326, 1422) | 8.5 (8.3, 8.8) | 1951 (1812, 2102) | 8.2 (7.6, 8.9) | -3.3 (-10.7, 4.6) |
| Cyprus | 41 (36, 47) | 4.8 (4.3, 5.5) | 126 (113, 141) | 6.6 (5.9, 7.4) | 37.5 (11.4, 61.2) |
| Denmark | 748 (722, 773) | 8.8 (8.5, 9.1) | 1117 (1033, 1199) | 9.6 (8.9, 10.3) | 8.3 (-0.3, 17.8) |
| Finland | 721 (700, 744) | 9.8 (9.5, 10.1) | 1211 (1128, 1297) | 9.7 (9, 10.4) | -1.1 (-8.6, 7.3) |
| France | 6406 (6229, 6595) | 7.4 (7.2, 7.6) | 12271 (11419, 13173) | 8.6 (8, 9.3) | 16.7 (7.7, 26.8) |
| Germany | 11561 (11224, 11902) | 8.7 (8.5, 8.9) | 19202 (17267, 21195) | 9.9 (8.9, 10.9) | 13.6 (1.8, 26.5) |
| Greece | 1064 (1021, 1105) | 6.8 (6.5, 7) | 2049 (1912, 2187) | 8.3 (7.8, 8.9) | 23 (14.1, 32.1) |

| | | | | | |
|-------------------------------|-------------------------|--------------------|-------------------------|----------------------|------------------------|
| Iceland | 26 (25, 28) | 8.9 (8.4, 9.4) | 47 (44, 51) | 8.7 (8.1, 9.3) | -2.3 (-10.7, 6.3) |
| Ireland | 401 (386, 416) | 9.5 (9.2, 9.8) | 627 (571, 684) | 8.5 (7.7, 9.2) | -10.7 (-18.9, -1.9) |
| Israel | 432 (411, 453) | 8.7 (8.3, 9.1) | 1074 (995, 1161) | 9.3 (8.6, 10.1) | 7.5 (-0.4, 16.8) |
| Italy | 7658 (7461, 7873) | 8.3 (8.1, 8.5) | 12681 (11784, 13695) | 8.4 (7.8, 9.1) | 1.2 (-6.7, 9.6) |
| Luxembourg | 50 (47, 53) | 8.9 (8.4, 9.4) | 98 (85, 110) | 9.9 (8.5, 11.1) | 11.5 (-4.5, 25.9) |
| Malta | 35 (33, 37) | 8.1 (7.6, 8.6) | 85 (79, 92) | 9.3 (8.6, 10) | 14.8 (4.5, 25.9) |
| Netherlands | 1791 (1742, 1843) | 8.7 (8.4, 8.9) | 3508 (3280, 3739) | 10.2 (9.5, 10.8) | 17.3 (9.3, 26) |
| Norway | 598 (587, 609) | 8.4 (8.3, 8.6) | 801 (771, 836) | 8.3 (8, 8.7) | -1.4 (-5.5, 3.7) |
| Portugal | 951 (918, 985) | 6.8 (6.6, 7.1) | 1639 (1516, 1769) | 6.7 (6.2, 7.2) | -2.4 (-10.3, 6.3) |
| Spain | 3557 (3466, 3663) | 6.3 (6.1, 6.4) | 6930 (6480, 7402) | 7.1 (6.6, 7.6) | 12.9 (4.9, 21.5) |
| Sweden | 1399 (1363, 1439) | 8.8 (8.6, 9) | 1770 (1674, 1874) | 8.2 (7.8, 8.7) | -6 (-11.7, 0.1) |
| Switzerland | 895 (860, 929) | 8.2 (7.9, 8.5) | 1363 (1268, 1469) | 7.8 (7.2, 8.4) | -5.2 (-13.1, 3.5) |
| United Kingdom | 7881 (7779, 7980) | 8.3 (8.1, 8.4) | 10991 (10771, 11274) | 8.4 (8.3, 8.6) | 2.1 (-0.3, 5.1) |
| Southern Latin America | 3726 (3531, 3925) | 8 (7.6, 8.4) | 7185 (6658, 7754) | 8.6 (8, 9.3) | 7.9 (-1.6, 17.5) |
| Argentina | 2721 (2534, 2918) | 8.3 (7.8, 8.9) | 4941 (4465, 5493) | 9.1 (8.2, 10.1) | 9.4 (-3.4, 23) |
| Chile | 620 (588, 652) | 6.3 (6, 6.6) | 1565 (1405, 1746) | 6.7 (6, 7.5) | 6.9 (-5.1, 19.7) |
| Uruguay | 385 (364, 410) | 9.6 (9, 10.1) | 679 (609, 754) | 12.1 (10.9, 13.5) | 26.8 (11.7, 43.2) |
| Eastern Europe | 19172 (18023, 20470) | 6.7 (6.3, 7.1) | 25356 (24870, 25886) | 7.3 (7.2, 7.5) | 10 (3.9, 16.9) |
| Belarus | 742 (700, 786) | 5.6 (5.3, 5.9) | 1001 (908, 1116) | 6.2 (5.7, 7) | 12.4 (1.9, 24.9) |
| Estonia | 182 (174, 191) | 8.6 (8.2, 9) | 251 (220, 285) | 9.2 (8, 10.4) | 6 (-8.1, 21.1) |
| Latvia | 334 (318, 351) | 8.9 (8.5, 9.4) | 393 (349, 440) | 9.5 (8.5, 10.7) | 6.6 (-5.6, 20.1) |
| Lithuania | 382 (365, 398) | 8.1 (7.8, 8.5) | 502 (468, 540) | 8.6 (8, 9.2) | 5.3 (-3.2, 14.2) |
| Moldova | 287 (268, 309) | 6.3 (5.9, 6.7) | 389 (364, 415) | 6.8 (6.4, 7.3) | 8.3 (-0.1, 17.9) |
| Russia | 13591 (12938, 14180) | 7.3 (7, 7.6) | 17309 (17020, 17588) | 7.4 (7.2, 7.5) | 0.6 (-3.4, 6.5) |
| Ukraine | 3653 (3159, 4399) | 5 (4.3, 5.9) | 5510 (5152, 5886) | 7.2 (6.8, 7.7) | 46.1 (22.2, 68.2) |
| Central Europe | 12524 (12279, 12726) | 8.3 (8.1, 8.4) | 19596 (19036, 20168) | 9.1 (8.8, 9.3) | 9.1 (5.4, 12.8) |
| Albania | 65 (60, 71) | 3 (2.8, 3.3) | 234 (193, 281) | 5.5 (4.6, 6.6) | 82.3 (45.4, 127) |
| Bosnia and Herzegovina | 280 (265, 296) | 7 (6.6, 7.4) | 546 (498, 598) | 9 (8.3, 9.9) | 29 (16.7, 41.7) |
| Bulgaria | 764 (737, 793) | 5.9 (5.7, 6.1) | 1262 (1176, 1355) | 8.6 (8, 9.2) | 44.3 (33.4, 55.2) |
| Croatia | 524 (504, 543) | 8.1 (7.8, 8.4) | 762 (711, 818) | 8.4 (7.9, 9.1) | 4.2 (-3.5, 12.3) |
| Czech Republic | 1650 (1599, 1695) | 11.7 (11.4, 12) | 2306 (2153, 2465) | 10.9 (10.2, 11.6) | -7.2 (-13.9, 0) |

| | | | | | |
|------------------------------|----------------------|--------------------|------------------------|---------------------|-------------------------|
| Hungary | 1496 (1450, 1541) | 9.9 (9.6, 10.2) | 2032 (1906, 2161) | 10.4 (9.8, 11.1) | 5.6 (-1.9, 12.9) |
| Macedonia | 104 (97, 112) | 5.6 (5.2, 6) | 253 (226, 285) | 7.4 (6.7, 8.4) | 33.2 (18.4, 51.3) |
| Montenegro | 44 (39, 49) | 7 (6.2, 7.8) | 84 (76, 94) | 8.3 (7.5, 9.3) | 19.1 (2.4, 37.1) |
| Poland | 4289 (4173, 4408) | 9.5 (9.3, 9.8) | 6178 (5765, 6621) | 8.8 (8.2, 9.4) | -7.4 (-13.8, -0.8) |
| Romania | 1732 (1675, 1792) | 6 (5.8, 6.2) | 3107 (2926, 3298) | 8.4 (7.9, 8.9) | 39.2 (30.2, 48.3) |
| Serbia | 875 (760, 982) | 7.6 (6.6, 8.6) | 1559 (1438, 1677) | 9.7 (8.9, 10.4) | 26.2 (10.1, 48.1) |
| Slovakia | 485 (462, 509) | 7.9 (7.6, 8.3) | 868 (800, 941) | 9.5 (8.8, 10.3) | 19.9 (8.6, 31.6) |
| Slovenia | 215 (206, 224) | 8.7 (8.3, 9) | 406 (376, 440) | 9.3 (8.6, 10) | 6.9 (-2.2, 16.7) |
| Central Asia | 1234 (1125, 1324) | 2.7 (2.4, 2.9) | 3463 (3315, 3617) | 5 (4.8, 5.2) | 87.9 (75.9, 106.3) |
| Armenia | 194 (177, 211) | 7.4 (6.7, 8) | 388 (367, 412) | 9.3 (8.8, 9.8) | 26 (13.6, 41.2) |
| Azerbaijan | 183 (154, 216) | 3.7 (3, 4.4) | 505 (450, 563) | 5.9 (5.2, 6.6) | 58.8 (33.7, 91.9) |
| Georgia | 192 (171, 226) | 3.1 (2.7, 3.6) | 329 (305, 354) | 5.5 (5.2, 6) | 81 (57.6, 103.7) |
| Kazakhstan | 174 (152, 193) | 1.4 (1.2, 1.6) | 948 (878, 1032) | 5.7 (5.3, 6.2) | 302.8 (262.4, 355.6) |
| Kyrgyzstan | 123 (113, 133) | 4 (3.7, 4.4) | 173 (159, 191) | 4.1 (3.8, 4.5) | 0.4 (-9.9, 11.4) |
| Mongolia | 31 (28, 34) | 3 (2.8, 3.3) | 99 (87, 112) | 4.8 (4.2, 5.4) | 57 (35.8, 80) |
| Tajikistan | 93 (80, 109) | 3.4 (2.9, 4) | 182 (164, 201) | 3.9 (3.5, 4.3) | 14.9 (-4.9, 36.9) |
| Turkmenistan | 27 (25, 29) | 1.5 (1.4, 1.6) | 131 (120, 142) | 3.8 (3.5, 4.1) | 151 (124.1, 180.9) |
| Uzbekistan | 218 (153, 259) | 1.9 (1.3, 2.3) | 707 (634, 790) | 3.8 (3.4, 4.2) | 94.1 (57.8, 184.6) |
| Central Latin America | 3363 (3304, 3416) | 4.1 (4, 4.2) | 10118 (9742, 10467) | 4.5 (4.3, 4.6) | 8.2 (3.8, 12.8) |
| Colombia | 850 (821, 880) | 5 (4.8, 5.2) | 2123 (1880, 2363) | 3.9 (3.5, 4.4) | -21.3 (-30.3, -11.6) |
| Costa Rica | 59 (56, 62) | 3.4 (3.3, 3.6) | 308 (282, 339) | 6.4 (5.8, 7) | 85.9 (67.2, 107) |
| El Salvador | 50 (47, 53) | 1.7 (1.6, 1.8) | 260 (219, 306) | 4.6 (3.8, 5.4) | 166.5 (121.5, 218.7) |
| Guatemala | 48 (46, 51) | 1.4 (1.3, 1.5) | 356 (320, 393) | 3.4 (3.1, 3.8) | 143.6 (116.2, 172.4) |
| Honduras | 46 (41, 52) | 2.3 (2, 2.6) | 242 (195, 286) | 4.2 (3.4, 5) | 84.2 (44.9, 127.2) |
| Mexico | 2099 (2060, 2138) | 5 (4.9, 5.1) | 5219 (5063, 5369) | 4.7 (4.5, 4.8) | -5.5 (-9, -2) |
| Nicaragua | 27 (24, 29) | 1.8 (1.6, 1.9) | 147 (131, 166) | 3.4 (3, 3.8) | 90.6 (62.1, 122.7) |
| Panama | 40 (38, 42) | 2.7 (2.6, 2.9) | 162 (150, 175) | 4.1 (3.8, 4.5) | 50.5 (36.6, 66.7) |
| Venezuela | 144 (136, 151) | 1.5 (1.4, 1.6) | 1301 (1121, 1498) | 4.8 (4.1, 5.5) | 216.4 (171, 269.2) |
| Andean Latin America | 445 (418, 477) | 2.2 (2.1, 2.4) | 2437 (2212, 2655) | 4.6 (4.2, 5) | 107.3 (85.3, 132.8) |
| Bolivia | 105 (83, 127) | 3.4 (2.7, 4.1) | 471 (382, 589) | 5.7 (4.7, 7.1) | 67.8 (28.5, 116.6) |
| Ecuador | 90 (86, 95) | 1.7 (1.6, 1.8) | 647 (588, 714) | 4.5 (4.1, 5) | 162.3 (135.5, 194.1) |

| | | | | | |
|---|-------------------------|-------------------|-------------------------|-------------------|-------------------------|
| Peru | 249 (220, 274) | 2-1 (1-9, 2-3) | 1320 (1135, 1511) | 4-3 (3-7, 5) | 104-5 (72-7, 142-6) |
| Caribbean | 447 (429, 469) | 1-7 (1-6, 1-8) | 2467 (2296, 2654) | 4-9 (4-5, 5-2) | 184 (164-7, 202-6) |
| Antigua and Barbuda | 1 (1, 1) | 1-5 (1-4, 1-7) | 5 (4, 5) | 4-7 (4-3, 5-1) | 205-1 (171-3, 242-3) |
| The Bahamas | 3 (2, 3) | 1-7 (1-6, 1-8) | 15 (14, 17) | 4-3 (3-9, 4-7) | 146 (120-7, 175-9) |
| Barbados | 4 (4, 4) | 1-4 (1-3, 1-5) | 29 (26, 32) | 5-9 (5-3, 6-5) | 331-6 (284-2, 381-1) |
| Belize | 2 (1, 2) | 1-7 (1-5, 1-8) | 13 (12, 14) | 5-4 (5, 5-8) | 220-3 (187-7, 260-4) |
| Bermuda | 1 (1, 1) | 1-9 (1-7, 2) | 11 (10, 12) | 8-2 (7-5, 9) | 336-7 (282-1, 394-7) |
| Cuba | 180 (172, 189) | 1-7 (1-6, 1-8) | 984 (877, 1095) | 5-2 (4-6, 5-8) | 202-5 (167-2, 239-9) |
| Dominica | 1 (1, 1) | 1-5 (1-4, 1-6) | 6 (5, 6) | 6-2 (5-7, 6-8) | 304-8 (262-3, 353) |
| Dominican Republic | 54 (49, 59) | 1-5 (1-3, 1-6) | 429 (363, 502) | 4-7 (4, 5-5) | 222-3 (161-7, 292-6) |
| Grenada | 1 (1, 1) | 1-5 (1-4, 1-6) | 11 (10, 11) | 6-6 (6-1, 7-2) | 337-5 (290-9, 384-8) |
| Guyana | 5 (5, 6) | 1-4 (1-3, 1-5) | 25 (22, 28) | 4-2 (3-8, 4-8) | 195-5 (156-3, 237-9) |
| Haiti | 56 (45, 71) | 1-8 (1-5, 2-3) | 201 (153, 253) | 3-3 (2-6, 4-1) | 79-5 (41-3, 128-3) |
| Jamaica | 26 (24, 28) | 1-4 (1-3, 1-5) | 125 (106, 148) | 4-3 (3-6, 5-1) | 201-9 (147-9, 269-4) |
| Puerto Rico | 76 (72, 80) | 2 (1-9, 2-1) | 370 (343, 399) | 5-1 (4-7, 5-5) | 154-6 (131-5, 179-5) |
| Saint Lucia | 1 (1, 2) | 1-6 (1-5, 1-7) | 12 (11, 14) | 6 (5-5, 6-6) | 277-3 (239, 321-4) |
| Saint Vincent and the Grenadines | 1 (1, 1) | 1-5 (1-4, 1-7) | 7 (6, 7) | 5 (4-6, 5-4) | 220-6 (187-7, 256-8) |
| Suriname | 3 (3, 4) | 1-3 (1-2, 1-4) | 32 (29, 36) | 5-7 (5-1, 6-3) | 328-1 (271-3, 390-1) |
| Trinidad and Tobago | 12 (11, 12) | 1-4 (1-3, 1-5) | 89 (74, 107) | 5 (4-2, 6) | 266 (203-1, 341-5) |
| Virgin Islands | 3 (3, 3) | 3-6 (3-3, 4) | 15 (13, 17) | 8-3 (7-1, 9-3) | 128-1 (90-2, 164-9) |
| Tropical Latin America | 4279 (4162, 4374) | 4-9 (4-8, 5) | 12830 (12509, 13198) | 5-6 (5-5, 5-8) | 14-1 (10-6, 19-3) |
| Brazil | 4227 (4114, 4319) | 5 (4-9, 5-1) | 12555 (12233, 12912) | 5-6 (5-5, 5-8) | 12-7 (9-4, 18) |
| Paraguay | 52 (47, 58) | 2-5 (2-2, 2-7) | 275 (232, 323) | 5-4 (4-6, 6-4) | 118-5 (78-5, 169-6) |
| East Asia | 26786 (25672, 28087) | 3 (2-9, 3-2) | 89755 (85883, 93552) | 4-5 (4-3, 4-7) | 47-5 (37, 57-3) |
| China | 25322 (24232, 26615) | 3 (2-9, 3-2) | 85101 (81202, 88782) | 4-5 (4-3, 4-7) | 47-5 (36-4, 57-8) |
| North Korea | 479 (385, 586) | 3 (2-4, 3-6) | 970 (786, 1147) | 3-1 (2-5, 3-7) | 4-8 (-16-9, 31-3) |
| Taiwan (Province of China) | 539 (522, 554) | 3-4 (3-3, 3-5) | 2238 (2106, 2385) | 5-8 (5-5, 6-2) | 69-8 (59-1, 82) |
| Southeast Asia | 6432 (6043, 6918) | 2-6 (2-5, 2-8) | 19909 (18283, 21437) | 3-6 (3-3, 3-9) | 38-1 (27-1, 48-2) |
| Cambodia | 120 (100, 149) | 2-8 (2-3, 3-4) | 345 (300, 402) | 3-3 (2-9, 3-8) | 19-2 (-6-7, 46-9) |
| Indonesia | 2333 (2016, 2678) | 2-5 (2-2, 2-9) | 7174 (6046, 8001) | 3-7 (3-2, 4-1) | 49-3 (33-4, 67-6) |
| Laos | 57 (44, 72) | 2-8 (2-3, 3-6) | 130 (109, 156) | 3-3 (2-8, 4) | 17-4 (-11-6, 56-4) |

| | | | | | |
|---------------------------------------|----------------------|-------------------|-------------------------|-------------------|------------------------|
| Malaysia | 198 (181, 222) | 2.4 (2.1, 2.7) | 832 (732, 975) | 3.6 (3.2, 4.1) | 49.8 (23.3, 86.3) |
| Maldives | 2 (1, 3) | 2.6 (1.9, 3.2) | 7 (7, 8) | 2.7 (2.4, 3) | 4.1 (-19.2, 49.5) |
| Mauritius | 29 (27, 31) | 4.1 (3.8, 4.3) | 74 (68, 82) | 4.6 (4.2, 5) | 12.5 (0.6, 26.7) |
| Myanmar | 802 (645, 987) | 3.6 (3, 4.4) | 1869 (1612, 2211) | 4.4 (3.8, 5.2) | 23.1 (-4.2, 52.4) |
| Philippines | 750 (699, 800) | 2.6 (2.4, 2.8) | 2542 (2217, 2885) | 3.9 (3.4, 4.4) | 47.9 (27.5, 71.6) |
| Sri Lanka | 205 (190, 220) | 2 (1.9, 2.1) | 658 (542, 770) | 2.8 (2.3, 3.2) | 39.3 (13, 64.6) |
| Seychelles | 3 (3, 4) | 6 (5.4, 6.5) | 6 (6, 7) | 6.3 (5.8, 6.8) | 5.4 (-7.7, 19.1) |
| Thailand | 1163 (1071, 1255) | 3.4 (3.1, 3.7) | 3411 (3051, 3823) | 3.5 (3.2, 4) | 4.2 (-8.4, 18.6) |
| East Timor | 6 (4, 7) | 2.1 (1.7, 2.6) | 24 (18, 32) | 3.1 (2.5, 4.1) | 44.7 (8.2, 85.9) |
| Vietnam | 756 (670, 842) | 1.9 (1.7, 2.1) | 2811 (2406, 3286) | 3.3 (2.8, 3.8) | 73.3 (43, 109.1) |
| Oceania | 73 (65, 93) | 2.7 (2.5, 3.4) | 206 (181, 252) | 3.5 (3.2, 4.2) | 29.4 (15.8, 44.7) |
| American Samoa | 1 (1, 1) | 4 (3.5, 4.8) | 2 (2, 2) | 5.5 (4.8, 6.3) | 36.9 (8.2, 68.9) |
| Federated States of Micronesia | 2 (1, 2) | 3.6 (3.1, 4.1) | 3 (2, 3) | 4.6 (4, 5.2) | 28.4 (3.9, 54.5) |
| Fiji | 10 (8, 11) | 2.9 (2.5, 3.4) | 25 (21, 28) | 3.7 (3.2, 4.2) | 28 (1.6, 64.2) |
| Guam | 3 (3, 3) | 4.1 (3.6, 4.6) | 11 (10, 12) | 6.2 (5.5, 6.9) | 53 (25.8, 79.5) |
| Kiribati | 1 (1, 1) | 2.3 (2, 2.5) | 2 (1, 2) | 2.9 (2.4, 3.4) | 29.9 (4.1, 59.1) |
| Marshall Islands | 1 (0, 1) | 3.7 (2.8, 4.6) | 2 (1, 2) | 5.5 (4.2, 6.7) | 46.9 (21.8, 73.3) |
| Northern Mariana Islands | 1 (1, 1) | 4.6 (3.9, 5.5) | 3 (2, 3) | 6 (5.3, 6.8) | 32.4 (7.1, 58.2) |
| Papua New Guinea | 41 (34, 58) | 2.4 (2, 3.3) | 124 (100, 166) | 3.1 (2.6, 4.1) | 31.1 (10.2, 53.9) |
| Samoa | 2 (2, 3) | 3 (2.5, 3.5) | 4 (4, 5) | 3.3 (2.9, 3.8) | 10.9 (-8.1, 34.2) |
| Solomon Islands | 3 (3, 4) | 2.5 (2, 3) | 9 (8, 11) | 3.1 (2.6, 3.7) | 27.6 (4.2, 54.6) |
| Tonga | 2 (2, 2) | 4 (3.4, 4.5) | 4 (3, 4) | 4.9 (4.3, 5.7) | 23.2 (2.5, 48.9) |
| Vanuatu | 2 (1, 3) | 3.3 (2.3, 4.7) | 7 (5, 11) | 4.6 (3.2, 6.7) | 40.2 (12.7, 75.5) |
| North Africa and Middle East | 4892 (4356, 6020) | 3 (2.7, 3.6) | 15636 (14791, 16414) | 4 (3.7, 4.1) | 33.9 (4.2, 49.2) |
| Afghanistan | 156 (80, 293) | 2.2 (1.2, 4.2) | 268 (197, 382) | 2.7 (2.1, 3.9) | 22.6 (-13.7, 102.3) |
| Algeria | 222 (197, 253) | 1.9 (1.7, 2.1) | 903 (812, 990) | 2.9 (2.6, 3.2) | 55.3 (30.4, 79.4) |
| Bahrain | 9 (8, 10) | 5.6 (5, 6.2) | 32 (29, 37) | 4 (3.6, 4.5) | -27.7 (-39.5, -14) |
| Egypt | 491 (452, 532) | 1.8 (1.7, 1.9) | 1558 (1313, 1808) | 2.8 (2.4, 3.2) | 54.2 (31.3, 79.3) |
| Iran | 545 (501, 623) | 2.2 (2.1, 2.5) | 2723 (2591, 2843) | 4.1 (3.9, 4.3) | 85.7 (57.6, 105.9) |
| Iraq | 272 (225, 360) | 3.6 (3, 4.8) | 650 (599, 705) | 2.9 (2.7, 3.2) | -19.3 (-39.2, 0.5) |
| Jordan | 35 (29, 42) | 2.6 (2.1, 3.1) | 211 (183, 244) | 4.1 (3.5, 4.6) | 56.8 (22.8, 103.2) |

| | | | | | |
|------------------------------------|----------------------|-------------------|-------------------------|--------------------|------------------------|
| Kuwait | 19 (17, 20) | 3.2 (2.9, 3.5) | 74 (67, 82) | 3.2 (2.9, 3.6) | 1.5 (-12, 16.5) |
| Lebanon | 79 (69, 91) | 3.7 (3.3, 4.2) | 285 (253, 320) | 5 (4.4, 5.5) | 34.3 (11.2, 59.7) |
| Libya | 90 (70, 113) | 4.9 (3.8, 6.1) | 293 (243, 359) | 6.8 (5.7, 8.3) | 39.8 (-2.4, 85.9) |
| Morocco | 269 (237, 303) | 1.9 (1.7, 2.2) | 884 (740, 1051) | 2.9 (2.4, 3.5) | 51.6 (23.3, 87.9) |
| Palestine | 34 (27, 42) | 3.9 (3.1, 4.9) | 108 (98, 120) | 4.8 (4.3, 5.3) | 22.3 (-4.1, 55.4) |
| Oman | 13 (11, 16) | 2.1 (1.7, 2.5) | 57 (47, 69) | 3.3 (2.7, 3.9) | 59.3 (16.9, 103.2) |
| Qatar | 6 (5, 7) | 6.6 (5.5, 8) | 35 (28, 43) | 4.8 (3.9, 5.8) | -27 (-46.8, -2.2) |
| Saudi Arabia | 117 (95, 147) | 2 (1.6, 2.5) | 580 (490, 682) | 4.2 (3.6, 4.9) | 111.1 (50.2, 180.1) |
| Sudan | 135 (109, 175) | 1.5 (1.2, 1.9) | 411 (324, 522) | 2.5 (1.9, 3.1) | 63.4 (24.6, 107.1) |
| Syria | 104 (90, 123) | 2 (1.8, 2.4) | 399 (328, 469) | 3.3 (2.7, 3.8) | 59.2 (16.1, 103.5) |
| Tunisia | 95 (81, 110) | 2 (1.7, 2.3) | 338 (270, 412) | 2.9 (2.3, 3.5) | 43.9 (5.9, 90.5) |
| Turkey | 2114 (1705, 2803) | 6 (4.9, 7.9) | 5309 (4771, 5861) | 6.1 (5.5, 6.7) | 2.4 (-24.3, 24.3) |
| United Arab Emirates | 18 (12, 29) | 4.2 (2.6, 6.5) | 241 (146, 357) | 6.9 (3.9, 10.5) | 65.8 (7.9, 125.5) |
| Yemen | 65 (43, 100) | 1.4 (0.9, 2) | 264 (201, 335) | 2.2 (1.7, 2.8) | 63.8 (7, 152.6) |
| South Asia | 8607 (7784, 9888) | 1.6 (1.4, 1.8) | 35820 (34115, 37929) | 2.9 (2.7, 3) | 81.5 (56.5, 103) |
| Bangladesh | 731 (616, 911) | 1.6 (1.4, 2) | 2159 (1767, 2631) | 1.9 (1.5, 2.3) | 15.2 (-4.5, 37.7) |
| Bhutan | 4 (4, 6) | 1.9 (1.5, 2.7) | 17 (14, 22) | 3.1 (2.4, 4) | 61.2 (22.9, 118.3) |
| India | 6887 (6169, 7970) | 1.6 (1.4, 1.8) | 30426 (28762, 32699) | 3 (2.8, 3.2) | 89.7 (60.9, 113) |
| Nepal | 136 (93, 191) | 1.6 (1, 2.2) | 563 (392, 785) | 2.8 (2, 3.9) | 80.4 (44.8, 120.4) |
| Pakistan | 848 (706, 967) | 1.5 (1.3, 1.8) | 2653 (2194, 3159) | 2.7 (2.2, 3.1) | 73.5 (41.4, 115.6) |
| Southern sub-Saharan Africa | 1211 (1056, 1379) | 4.6 (3.9, 5.2) | 2871 (2704, 3022) | 5.5 (5.2, 5.8) | 21.2 (8.7, 37.2) |
| Botswana | 23 (19, 28) | 4.1 (3.5, 5) | 67 (54, 80) | 5.6 (4.5, 6.6) | 35 (4.3, 74.5) |
| Lesotho | 33 (28, 41) | 3.5 (3, 4.3) | 64 (49, 79) | 5.8 (4.5, 7.2) | 64.5 (25.2, 118.5) |
| Namibia | 19 (16, 21) | 2.7 (2.4, 3.1) | 48 (41, 57) | 3.6 (3.1, 4.3) | 35.6 (11.3, 65.9) |
| South Africa | 954 (812, 1122) | 4.7 (4, 5.5) | 2265 (2107, 2423) | 5.5 (5.1, 5.8) | 16.1 (2.5, 32.4) |
| Swaziland | 14 (12, 19) | 5.2 (4.4, 6.9) | 35 (26, 46) | 6.9 (5.2, 8.8) | 32 (0.4, 76.2) |
| Zimbabwe | 169 (149, 190) | 4.3 (3.9, 4.9) | 392 (330, 456) | 6.2 (5.2, 7.2) | 42.1 (17.6, 72.9) |
| Western sub-Saharan Africa | 2574 (2156, 3128) | 3.1 (2.6, 3.8) | 7283 (6271, 8582) | 4.5 (3.9, 5.3) | 46.1 (23.7, 75) |
| Benin | 50 (43, 58) | 2.6 (2.2, 3) | 194 (153, 246) | 4.6 (3.6, 5.7) | 78.1 (38.8, 125.5) |
| Burkina Faso | 95 (76, 114) | 2.3 (1.8, 2.7) | 302 (252, 370) | 3.8 (3.1, 4.6) | 66.2 (34.9, 112.6) |
| Cameroon | 147 (123, 171) | 3.5 (3, 4.1) | 611 (466, 784) | 5.9 (4.6, 7.5) | 68.9 (33.8, 111.3) |

| | | | | | |
|-----------------------------------|----------------------|-------------------|----------------------|-------------------|------------------------|
| Cape Verde | 9 (8, 10) | 3.8 (3.3, 4.3) | 31 (28, 35) | 7.3 (6.5, 8) | 91.2 (58.6, 133.6) |
| Chad | 52 (41, 65) | 1.9 (1.5, 2.3) | 167 (140, 200) | 3.4 (2.8, 4) | 81.5 (46.2, 130.5) |
| Côte d'Ivoire | 73 (62, 84) | 2 (1.7, 2.3) | 242 (196, 293) | 2.7 (2.2, 3.2) | 34.4 (2.4, 68.2) |
| The Gambia | 7 (5, 8) | 1.9 (1.7, 2.3) | 27 (22, 33) | 3.1 (2.5, 3.7) | 58.4 (23.3, 98.2) |
| Ghana | 316 (263, 372) | 5.3 (4.5, 6.2) | 1176 (994, 1385) | 8.3 (7.1, 9.7) | 55.9 (25.5, 94.2) |
| Guinea | 68 (61, 76) | 2.1 (1.9, 2.3) | 150 (118, 195) | 3 (2.4, 3.9) | 43 (10.3, 89) |
| Guinea-Bissau | 12 (8, 15) | 3.1 (2.2, 3.8) | 31 (22, 40) | 5 (3.6, 6.3) | 62.9 (29.3, 97) |
| Liberia | 28 (22, 36) | 2.5 (2, 3.2) | 67 (50, 86) | 3.9 (2.9, 5) | 55.6 (24.8, 92.6) |
| Mali | 93 (82, 105) | 2.4 (2.1, 2.7) | 235 (190, 290) | 3.1 (2.5, 3.7) | 26.9 (0.8, 64.3) |
| Mauritania | 32 (27, 38) | 3.2 (2.7, 3.7) | 98 (79, 118) | 5.3 (4.3, 6.4) | 67.1 (30.8, 115.1) |
| Niger | 51 (41, 64) | 1.9 (1.6, 2.4) | 185 (145, 236) | 2.8 (2.2, 3.6) | 47.1 (19.7, 85.8) |
| Nigeria | 1385 (995, 1958) | 3.3 (2.4, 4.6) | 3214 (2297, 4473) | 4.4 (3.2, 6) | 33.1 (-2.2, 88.6) |
| São Tomé and Príncipe | 1 (1, 1) | 1.3 (1.1, 1.5) | 2 (2, 3) | 2.4 (1.7, 3.3) | 79.9 (36.5, 137.8) |
| Senegal | 85 (74, 97) | 2.7 (2.4, 3.1) | 304 (259, 352) | 4.5 (3.9, 5.3) | 66.8 (36.2, 102.9) |
| Sierra Leone | 42 (34, 51) | 2.2 (1.8, 2.6) | 121 (98, 147) | 3.9 (3.2, 4.7) | 74.8 (31.3, 132.3) |
| Togo | 28 (24, 32) | 2.4 (2.1, 2.8) | 124 (98, 155) | 4 (3.2, 5) | 68.3 (35.3, 108.5) |
| Eastern sub-Saharan Africa | 1928 (1656, 2377) | 2.7 (2.4, 3.3) | 4638 (4104, 5153) | 3.3 (2.9, 3.6) | 19.6 (-1.6, 46.1) |
| Burundi | 63 (46, 80) | 3 (2.3, 3.8) | 98 (80, 117) | 2.7 (2.2, 3.1) | -12.5 (-32.3, 18.1) |
| Comoros | 7 (6, 8) | 3.4 (2.9, 4) | 16 (13, 20) | 3.8 (3.1, 4.6) | 11.5 (-15.1, 42.5) |
| Djibouti | 5 (3, 6) | 3.5 (2.5, 4.6) | 23 (16, 32) | 4.6 (3.3, 6.2) | 30.5 (-6, 82.7) |
| Eritrea | 30 (23, 37) | 3.3 (2.7, 4) | 88 (63, 112) | 4.3 (3.2, 5.3) | 30.9 (-0.7, 78.5) |
| Ethiopia | 542 (343, 900) | 3.1 (2.1, 5) | 1098 (852, 1341) | 3.1 (2.4, 3.8) | 0.7 (-30.5, 60.4) |
| Kenya | 188 (145, 222) | 2.3 (1.8, 2.7) | 667 (539, 797) | 3.4 (2.7, 4) | 44.2 (26.9, 60.6) |
| Madagascar | 122 (107, 141) | 2.4 (2.1, 2.8) | 244 (197, 298) | 2.5 (2.1, 3.1) | 4.9 (-14.7, 31.2) |
| Malawi | 88 (61, 107) | 2.3 (1.7, 2.8) | 193 (165, 225) | 2.8 (2.4, 3.2) | 19.3 (-3.9, 69.3) |
| Mozambique | 121 (105, 138) | 2.2 (2, 2.5) | 289 (229, 361) | 3.1 (2.5, 3.8) | 37.6 (4.6, 83.6) |
| Rwanda | 89 (69, 113) | 3.2 (2.5, 4) | 170 (141, 212) | 3.3 (2.7, 4) | 3.1 (-23.2, 48.3) |
| Somalia | 65 (40, 95) | 2.7 (1.9, 3.9) | 184 (131, 247) | 3.2 (2.3, 4.2) | 15.1 (-18.4, 72.7) |
| South Sudan | 71 (46, 108) | 3.1 (2.1, 4.6) | 116 (82, 165) | 3.4 (2.5, 4.7) | 9.3 (-21.7, 56.9) |
| Tanzania | 299 (239, 353) | 2.8 (2.3, 3.3) | 774 (640, 969) | 3.4 (2.9, 4.3) | 22.2 (-2, 55.7) |
| Uganda | 125 (107, 147) | 2 (1.7, 2.3) | 419 (354, 494) | 3.4 (2.9, 4) | 69.5 (37.6, 105.3) |

| | | | | | |
|-----------------------------------|-------------------|-------------------|----------------------|-------------------|-----------------------|
| Zambia | 112 (91, 131) | 4.1 (3.4, 4.7) | 256 (205, 302) | 4.4 (3.6, 5.1) | 8.1 (-10.6, 29.8) |
| Central sub-Saharan Africa | 633 (543, 743) | 3 (2.6, 3.6) | 1496 (1295, 1700) | 3.3 (2.9, 3.8) | 9.1 (-9.4, 29.4) |
| Angola | 118 (88, 161) | 3.3 (2.5, 4.3) | 397 (326, 484) | 4.2 (3.4, 5.1) | 29 (-0.3, 72) |
| Central African Republic | 35 (24, 50) | 3.2 (2.4, 4.5) | 63 (43, 82) | 3.2 (2.4, 4.1) | 1.2 (-20.4, 28.5) |
| Congo | 44 (34, 54) | 4.3 (3.5, 5.1) | 114 (83, 148) | 5.2 (3.9, 6.4) | 20.9 (-12.6, 58.1) |
| DR Congo | 406 (335, 485) | 2.8 (2.3, 3.4) | 841 (674, 1033) | 2.8 (2.2, 3.5) | -1.1 (-22.1, 24.6) |
| Equatorial Guinea | 6 (4, 9) | 3.2 (2.3, 4.8) | 25 (17, 35) | 6 (4.2, 8.4) | 84.7 (20.6, 178.3) |
| Gabon | 25 (20, 32) | 4.5 (3.8, 5.8) | 57 (46, 67) | 5.9 (4.8, 6.9) | 30.3 (-2.2, 64.4) |

Appendix Table 3: Incident cases of pancreatic cancer in 1990 and 2017 for both sexes and percentage change of age-standardised rates by location

| | 1990 | | 2017 | | Percentage change in age-standardised rates between 1990 and 2017 |
|----------------------------------|----------------------------|----------------------|----------------------------|----------------------|---|
| | Counts (95% UI) | Rate (95% UI) | Counts (95% UI) | Rate (95% UI) | |
| Global | 195413 (192388, 199204) | 5 (4.9, 5.1) | 447665 (438598, 456296) | 5.7 (5.6, 5.8) | 13.5 (9.9, 16.5) |
| High SDI | 107563 (106576, 108561) | 8.3 (8.2, 8.4) | 210439 (205078, 215723) | 9.3 (9.1, 9.5) | 11.8 (8.8, 14.6) |
| High-middle SDI | 46618 (45139, 48077) | 5.0 (4.8, 5.1) | 104712 (101608, 107873) | 5.9 (5.7, 6.0) | 18.6 (13.2, 23.6) |
| Middle SDI | 23620 (22956, 24349) | 2.5 (2.4, 2.6) | 77874 (74175, 80973) | 3.6 (3.5, 3.8) | 44.0 (35.5, 50.8) |
| Low-middle SDI | 11416 (10594, 12328) | 2.1 (1.9, 2.3) | 36617 (34650, 39375) | 3.2 (3.1, 3.5) | 54.6 (40.3, 66.7) |
| Low SDI | 5673 (4889, 7029) | 1.8 (1.6, 2.2) | 16379 (15174, 17600) | 2.4 (2.3, 2.6) | 37.3 (17.4, 56.6) |
| High-income North America | 32338 (31862, 32823) | 8.9 (8.7, 9) | 61111 (59322, 63147) | 9.8 (9.6, 10.2) | 11 (7.4, 15.4) |
| Canada | 2874 (2770, 3055) | 8.6 (8.3, 9.2) | 5451 (4970, 6033) | 7.9 (7.3, 8.7) | -7.9 (-17.4, 1.9) |
| Greenland | 6 (5, 7) | 18.4 (16.5, 20.2) | 11 (10, 12) | 16.1 (14.6, 17.5) | -12.5 (-23.3, 0.7) |
| USA | 29458 (29011, 29914) | 8.9 (8.8, 9) | 55649 (54001, 57477) | 10.1 (9.8, 10.4) | 13.3 (9.5, 17.8) |
| Australasia | 1804 (1756, 1854) | 7.5 (7.3, 7.7) | 4129 (3748, 4521) | 8.3 (7.6, 9.1) | 11.1 (0.7, 22.2) |
| Australia | 1527 (1482, 1568) | 7.6 (7.4, 7.8) | 3548 (3171, 3943) | 8.5 (7.6, 9.4) | 11.3 (-0.6, 24.3) |
| New Zealand | 277 (259, 298) | 6.8 (6.4, 7.4) | 581 (526, 637) | 7.5 (6.8, 8.2) | 9.6 (-2.9, 23.1) |
| High-income Asia-Pacific | 17700 (17430, 17968) | 8.8 (8.6, 8.9) | 46240 (43540, 48931) | 9.8 (9.3, 10.3) | 12.3 (6.5, 18.1) |
| Brunei | 4 (4, 5) | 4.5 (3.9, 5.2) | 17 (15, 19) | 5.8 (5.1, 6.5) | 28.4 (6, 53) |
| Japan | 15650 (15409, 15896) | 9.1 (8.9, 9.2) | 39281 (36775, 41775) | 10.5 (9.9, 11.1) | 15.3 (9.2, 21.4) |
| Singapore | 80 (76, 85) | 3.6 (3.3, 3.8) | 309 (280, 342) | 4.6 (4.1, 5.1) | 28.9 (13.8, 46.5) |
| South Korea | 1966 (1900, 2039) | 6.5 (6.3, 6.8) | 6633 (5984, 7316) | 7.9 (7.1, 8.7) | 20.7 (7.9, 34.1) |
| Western Europe | 47053 (46405, 47849) | 7.9 (7.8, 8) | 82839 (79435, 86522) | 9 (8.6, 9.4) | 13.9 (9.1, 19) |
| Andorra | 4 (3, 5) | 7.6 (6, 9.1) | 11 (8, 13) | 7.8 (5.9, 9.5) | 1.6 (-18.2, 27.8) |
| Austria | 1083 (1036, 1149) | 8.9 (8.5, 9.4) | 1926 (1755, 2112) | 10.7 (9.8, 11.7) | 20.6 (8.6, 32.2) |
| Belgium | 1263 (1211, 1341) | 7.9 (7.6, 8.4) | 1855 (1679, 2072) | 8 (7.3, 8.7) | 0.4 (-9, 10.9) |
| Cyprus | 38 (34, 44) | 4.4 (4, 5.2) | 120 (107, 136) | 6.3 (5.6, 7.1) | 42.3 (15, 67.8) |
| Denmark | 740 (713, 767) | 8.9 (8.6, 9.2) | 1118 (1032, 1210) | 9.8 (9, 10.6) | 9.6 (0.7, 19.2) |
| Finland | 801 (771, 834) | 10.9 (10.5, 11.4) | 1331 (1214, 1446) | 10.8 (9.9, 11.7) | -1.7 (-10.9, 8) |
| France | 5870 (5677, 6141) | 6.9 (6.7, 7.2) | 11553 (10512, 12941) | 8.3 (7.6, 9.2) | 20.4 (9.8, 33.6) |
| Germany | 11613 (11136, 12178) | 8.9 (8.5, 9.3) | 20690 (18198, 23238) | 10.8 (9.5, 12.1) | 21.9 (8.1, 37.7) |
| Greece | 990 (949, 1034) | 6.3 (6.1, 6.6) | 1914 (1755, 2123) | 8 (7.4, 8.7) | 26.3 (15.7, 38.2) |

| | | | | | |
|-------------------------------|-------------------------|----------------------|-------------------------|----------------------|-----------------------|
| Iceland | 25 (23, 27) | 8.5 (7.9, 9.1) | 47 (42, 51) | 8.6 (7.9, 9.4) | 1.3 (-9.2, 12.8) |
| Ireland | 368 (355, 385) | 8.8 (8.4, 9.1) | 604 (544, 676) | 8.2 (7.4, 9.2) | -6.4 (-15.8, 4.5) |
| Israel | 395 (375, 415) | 8 (7.6, 8.3) | 989 (913, 1075) | 8.7 (8, 9.4) | 9.2 (0.5, 18.6) |
| Italy | 7236 (6978, 7657) | 7.9 (7.6, 8.4) | 13475 (12189, 14925) | 9.1 (8.3, 9.9) | 14.7 (3, 26.9) |
| Luxembourg | 47 (44, 50) | 8.3 (7.9, 8.9) | 95 (81, 110) | 9.6 (8.2, 11.1) | 15.6 (-2, 33.7) |
| Malta | 33 (31, 35) | 7.5 (7.1, 8) | 80 (73, 88) | 8.9 (8.2, 9.7) | 18.2 (6.7, 31) |
| Netherlands | 1675 (1614, 1761) | 8.2 (7.9, 8.6) | 3394 (3095, 3736) | 9.9 (9.1, 10.9) | 21.6 (10.5, 34.5) |
| Norway | 639 (623, 654) | 9.1 (8.8, 9.3) | 868 (819, 919) | 9.1 (8.6, 9.6) | 0.1 (-5.6, 7) |
| Portugal | 871 (841, 901) | 6.3 (6, 6.5) | 1458 (1347, 1578) | 6.2 (5.7, 6.7) | -1.5 (-9.7, 7.6) |
| Spain | 3626 (3501, 3766) | 6.4 (6.2, 6.7) | 7149 (6482, 7942) | 7.3 (6.7, 8) | 14.3 (4, 25.8) |
| Sweden | 1337 (1301, 1373) | 8.6 (8.4, 8.9) | 1583 (1493, 1675) | 7.6 (7.2, 8) | -12 (-17.6, -6.1) |
| Switzerland | 891 (845, 947) | 8.2 (7.8, 8.6) | 1377 (1236, 1527) | 7.9 (7.1, 8.7) | -3.9 (-14.5, 7.7) |
| United Kingdom | 7464 (7343, 7598) | 7.9 (7.8, 8.1) | 11116 (10754, 11512) | 8.6 (8.3, 8.9) | 8.5 (4.8, 12.6) |
| Southern Latin America | 3484 (3302, 3667) | 7.4 (7, 7.8) | 6613 (6140, 7157) | 8 (7.4, 8.7) | 7.8 (-1.7, 17.6) |
| Argentina | 2545 (2369, 2723) | 7.7 (7.2, 8.3) | 4536 (4100, 5056) | 8.4 (7.6, 9.4) | 9 (-3.8, 22.9) |
| Chile | 582 (552, 612) | 5.8 (5.5, 6.1) | 1460 (1303, 1628) | 6.3 (5.6, 7) | 7.9 (-4.6, 21.2) |
| Uruguay | 356 (337, 379) | 8.9 (8.4, 9.4) | 615 (550, 689) | 11.3 (10.1, 12.6) | 26.5 (11.5, 43.2) |
| Eastern Europe | 18912 (17717, 20274) | 6.6 (6.1, 7) | 25865 (25301, 26509) | 7.6 (7.4, 7.8) | 15.7 (8.8, 23.2) |
| Belarus | 709 (668, 752) | 5.3 (5, 5.6) | 968 (876, 1085) | 6.1 (5.5, 6.9) | 15.3 (4, 27.4) |
| Estonia | 174 (166, 184) | 8.3 (7.9, 8.7) | 246 (211, 287) | 9.2 (7.9, 10.6) | 11.1 (-4.8, 29.1) |
| Latvia | 314 (299, 330) | 8.5 (8, 8.9) | 365 (322, 408) | 9.1 (8.1, 10.3) | 7.8 (-4.4, 21.3) |
| Lithuania | 365 (348, 384) | 7.8 (7.5, 8.2) | 494 (452, 547) | 8.6 (7.9, 9.4) | 9.9 (-0.2, 21.4) |
| Moldova | 285 (266, 307) | 6.2 (5.8, 6.6) | 383 (358, 410) | 6.8 (6.3, 7.2) | 9.7 (0.8, 20.1) |
| Russia | 13484 (12774, 14151) | 7.2 (6.8, 7.6) | 17845 (17493, 18224) | 7.7 (7.5, 7.9) | 6.4 (1.4, 13.4) |
| Ukraine | 3580 (3092, 4320) | 4.9 (4.2, 5.9) | 5564 (5187, 5967) | 7.5 (7, 8) | 53.3 (27.4, 76.4) |
| Central Europe | 12132 (11907, 12327) | 8 (7.9, 8.1) | 18689 (18148, 19249) | 8.8 (8.5, 9) | 9.3 (5.6, 13.3) |
| Albania | 64 (59, 70) | 2.9 (2.7, 3.2) | 220 (181, 264) | 5.2 (4.3, 6.2) | 79.4 (42.9, 123.7) |
| Bosnia and Herzegovina | 273 (258, 289) | 6.6 (6.3, 7) | 505 (461, 552) | 8.4 (7.7, 9.1) | 26.9 (14.9, 39.7) |
| Bulgaria | 755 (727, 784) | 5.9 (5.7, 6.1) | 1211 (1122, 1307) | 8.4 (7.8, 9) | 42.6 (31.2, 54.3) |
| Croatia | 538 (508, 568) | 8.3 (7.8, 8.9) | 823 (745, 905) | 9.1 (8.3, 10) | 9.8 (-1.7, 21.8) |
| Czech Republic | 1573 (1517, 1636) | 11.2 (10.8, 11.7) | 2339 (2136, 2547) | 11.1 (10.2, 12.1) | -1 (-9.8, 9.1) |

| | | | | | |
|------------------------------|----------------------|-------------------|----------------------|---------------------|-------------------------|
| Hungary | 1417 (1372, 1463) | 9.4 (9.1, 9.7) | 1877 (1759, 1995) | 9.8 (9.2, 10.4) | 4.5 (-3, 12) |
| Macedonia | 102 (95, 109) | 5.3 (5, 5.7) | 241 (216, 271) | 7.1 (6.4, 8) | 33 (18.5, 51) |
| Montenegro | 42 (37, 47) | 6.7 (5.9, 7.4) | 78 (70, 88) | 7.8 (7, 8.7) | 17.1 (0.3, 34.2) |
| Poland | 4054 (3944, 4164) | 9 (8.7, 9.2) | 5682 (5303, 6089) | 8.2 (7.7, 8.8) | -8.2 (-14.8, -1.6) |
| Romania | 1690 (1636, 1748) | 5.8 (5.7, 6) | 2907 (2738, 3090) | 8 (7.6, 8.5) | 37.1 (28.4, 46.1) |
| Serbia | 844 (736, 948) | 7.3 (6.3, 8.1) | 1437 (1326, 1549) | 9 (8.3, 9.7) | 24.2 (8.3, 45.4) |
| Slovakia | 577 (549, 607) | 9.5 (9, 9.9) | 983 (891, 1076) | 10.8 (9.8, 11.8) | 14.4 (2.6, 26.7) |
| Slovenia | 204 (195, 214) | 8.2 (7.8, 8.6) | 386 (352, 423) | 8.9 (8.2, 9.8) | 9 (-1.3, 20.1) |
| Central Asia | 1192 (1095, 1274) | 2.5 (2.3, 2.7) | 3342 (3200, 3493) | 4.7 (4.5, 4.9) | 85.8 (74.6, 102.4) |
| Armenia | 187 (171, 203) | 6.9 (6.3, 7.5) | 359 (339, 381) | 8.6 (8.1, 9.1) | 24.2 (12.2, 38.7) |
| Azerbaijan | 178 (152, 208) | 3.5 (2.9, 4.2) | 493 (440, 550) | 5.5 (4.9, 6.2) | 56.8 (33.2, 86.9) |
| Georgia | 187 (167, 221) | 3 (2.6, 3.5) | 309 (287, 333) | 5.3 (4.9, 5.7) | 78.5 (54.9, 100.9) |
| Kazakhstan | 165 (144, 184) | 1.3 (1.1, 1.5) | 924 (854, 1007) | 5.4 (5, 5.9) | 313.9 (273.3, 368.7) |
| Kyrgyzstan | 120 (111, 130) | 3.9 (3.6, 4.2) | 169 (156, 188) | 3.9 (3.6, 4.3) | -0.9 (-11.1, 10.2) |
| Mongolia | 30 (27, 33) | 2.9 (2.6, 3.1) | 99 (87, 112) | 4.5 (4, 5.1) | 57.3 (36.1, 80.5) |
| Tajikistan | 88 (76, 103) | 3.2 (2.7, 3.7) | 177 (160, 196) | 3.6 (3.3, 4) | 14.7 (-4.8, 35.4) |
| Turkmenistan | 26 (24, 28) | 1.4 (1.3, 1.5) | 127 (117, 138) | 3.5 (3.2, 3.8) | 152 (125.3, 181) |
| Uzbekistan | 210 (150, 248) | 1.8 (1.3, 2.2) | 684 (612, 765) | 3.5 (3.1, 3.8) | 88.5 (54.6, 171) |
| Central Latin America | 3220 (3167, 3273) | 3.8 (3.8, 3.9) | 9543 (9196, 9873) | 4.2 (4, 4.3) | 8.4 (4.1, 12.7) |
| Colombia | 818 (790, 847) | 4.7 (4.5, 4.8) | 1970 (1737, 2202) | 3.7 (3.2, 4.1) | -21.6 (-30.7, -12.1) |
| Costa Rica | 55 (53, 58) | 3.2 (3, 3.3) | 286 (261, 315) | 5.9 (5.4, 6.5) | 85.7 (67.1, 106.8) |
| El Salvador | 47 (44, 51) | 1.6 (1.5, 1.7) | 242 (202, 284) | 4.3 (3.5, 5) | 165.9 (121.1, 218.1) |
| Guatemala | 47 (44, 50) | 1.3 (1.2, 1.4) | 336 (302, 370) | 3.2 (2.8, 3.5) | 143.7 (116.7, 172.3) |
| Honduras | 45 (40, 50) | 2.2 (1.9, 2.4) | 235 (190, 278) | 4 (3.2, 4.7) | 84.9 (45.4, 126.5) |
| Mexico | 2007 (1969, 2043) | 4.6 (4.5, 4.7) | 4943 (4795, 5088) | 4.4 (4.2, 4.5) | -5.4 (-8.7, -2) |
| Nicaragua | 25 (23, 28) | 1.6 (1.5, 1.8) | 138 (123, 155) | 3.1 (2.8, 3.5) | 89.5 (61.6, 122) |
| Panama | 38 (36, 40) | 2.5 (2.4, 2.7) | 150 (138, 162) | 3.8 (3.5, 4.1) | 49.7 (35.7, 65.5) |
| Venezuela | 138 (131, 145) | 1.4 (1.3, 1.5) | 1242 (1068, 1437) | 4.5 (3.9, 5.2) | 216.8 (170.2, 269.8) |
| Andean Latin America | 426 (400, 457) | 2.1 (1.9, 2.2) | 2263 (2051, 2466) | 4.2 (3.8, 4.6) | 104.9 (82.8, 130.4) |
| Bolivia | 101 (79, 122) | 3.2 (2.5, 3.8) | 440 (354, 547) | 5.2 (4.3, 6.5) | 64.9 (25.8, 114.2) |
| Ecuador | 86 (82, 91) | 1.6 (1.5, 1.7) | 598 (543, 660) | 4.1 (3.7, 4.5) | 157.4 (130.9, 188.5) |

| | | | | | |
|---|-------------------------|-------------------|-------------------------|-------------------|-------------------------|
| Peru | 238 (211, 262) | 2 (1.7, 2.2) | 1226 (1054, 1405) | 4 (3.5, 4.6) | 103.2 (71.8, 141.4) |
| Caribbean | 422 (405, 445) | 1.6 (1.5, 1.7) | 2317 (2150, 2501) | 4.6 (4.2, 4.9) | 184.5 (165, 203.8) |
| Antigua and Barbuda | 1 (1, 1) | 1.4 (1.3, 1.5) | 4 (4, 5) | 4.3 (4, 4.7) | 201.4 (167.9, 237) |
| The Bahamas | 3 (2, 3) | 1.6 (1.5, 1.7) | 15 (14, 16) | 4 (3.6, 4.4) | 146.3 (120.2, 175.6) |
| Barbados | 4 (4, 4) | 1.3 (1.2, 1.4) | 26 (24, 29) | 5.5 (4.9, 6) | 326.4 (279.4, 376.7) |
| Belize | 1 (1, 2) | 1.6 (1.4, 1.7) | 13 (12, 14) | 5.1 (4.7, 5.5) | 226.1 (192.7, 265.3) |
| Bermuda | 1 (1, 1) | 1.8 (1.6, 1.9) | 10 (9, 11) | 7.6 (6.9, 8.3) | 334.8 (278.1, 395.7) |
| Cuba | 168 (160, 177) | 1.6 (1.5, 1.7) | 916 (815, 1027) | 4.9 (4.3, 5.5) | 204.4 (168.2, 241) |
| Dominica | 1 (1, 1) | 1.4 (1.3, 1.5) | 5 (5, 6) | 5.8 (5.3, 6.3) | 302.8 (260.5, 350.7) |
| Dominican Republic | 52 (47, 57) | 1.4 (1.3, 1.5) | 409 (345, 480) | 4.5 (3.8, 5.2) | 223.6 (162.2, 293.9) |
| Grenada | 1 (1, 1) | 1.4 (1.3, 1.5) | 10 (9, 10) | 6.3 (5.8, 6.8) | 339.7 (293.7, 387.8) |
| Guyana | 5 (5, 5) | 1.3 (1.3, 1.4) | 24 (22, 28) | 4 (3.6, 4.5) | 198.3 (157.7, 241.4) |
| Haiti | 55 (44, 70) | 1.7 (1.4, 2.1) | 195 (148, 248) | 3.1 (2.4, 3.8) | 76.7 (38.4, 127.4) |
| Jamaica | 24 (23, 26) | 1.3 (1.3, 1.4) | 119 (100, 142) | 4.1 (3.4, 4.9) | 204.7 (150, 275.4) |
| Puerto Rico | 71 (67, 74) | 1.9 (1.8, 2) | 340 (314, 369) | 4.8 (4.4, 5.2) | 156 (132.8, 181.1) |
| Saint Lucia | 1 (1, 1) | 1.5 (1.4, 1.6) | 12 (11, 13) | 5.6 (5.1, 6.2) | 278.5 (240.2, 323.4) |
| Saint Vincent and the Grenadines | 1 (1, 1) | 1.4 (1.4, 1.6) | 6 (6, 7) | 4.7 (4.3, 5.1) | 224.6 (190.6, 260.9) |
| Suriname | 3 (3, 3) | 1.3 (1.2, 1.3) | 31 (27, 34) | 5.4 (4.8, 5.9) | 327.8 (270.4, 389) |
| Trinidad and Tobago | 11 (10, 12) | 1.3 (1.2, 1.4) | 83 (69, 100) | 4.7 (3.9, 5.6) | 262.1 (199.1, 337.4) |
| Virgin Islands | 3 (3, 3) | 3.4 (3, 3.7) | 14 (12, 16) | 7.8 (6.7, 8.8) | 130.3 (91.7, 169.1) |
| Tropical Latin America | 4114 (3992, 4205) | 4.6 (4.5, 4.7) | 12047 (11750, 12405) | 5.2 (5.1, 5.4) | 14.3 (10.7, 19.8) |
| Brazil | 4064 (3947, 4154) | 4.6 (4.5, 4.7) | 11790 (11488, 12133) | 5.2 (5.1, 5.4) | 12.9 (9.5, 18.3) |
| Paraguay | 49 (44, 55) | 2.3 (2, 2.5) | 257 (217, 302) | 5 (4.2, 5.8) | 119.3 (78.6, 169.8) |
| East Asia | 26712 (25576, 28066) | 2.9 (2.8, 3.1) | 88159 (84111, 91988) | 4.4 (4.2, 4.6) | 49.9 (38.9, 60.3) |
| China | 25250 (24125, 26606) | 2.9 (2.8, 3.1) | 83562 (79583, 87352) | 4.4 (4.2, 4.6) | 49.9 (38.5, 60.7) |
| North Korea | 478 (381, 583) | 2.9 (2.3, 3.5) | 940 (760, 1124) | 3 (2.4, 3.6) | 4.8 (-18.2, 31.9) |
| Taiwan (Province of China) | 540 (523, 556) | 3.3 (3.2, 3.4) | 2236 (2071, 2424) | 5.8 (5.4, 6.3) | 75.4 (62.1, 90.8) |
| Southeast Asia | 6357 (5958, 6855) | 2.5 (2.3, 2.7) | 19111 (17530, 20603) | 3.4 (3.1, 3.6) | 36.1 (25.2, 46.3) |
| Cambodia | 119 (99, 149) | 2.6 (2.2, 3.2) | 335 (290, 392) | 3.1 (2.7, 3.6) | 17.2 (-9.5, 44.2) |
| Indonesia | 2333 (2012, 2689) | 2.4 (2.1, 2.7) | 6919 (5821, 7735) | 3.4 (2.9, 3.8) | 45.6 (29.6, 63.6) |
| Laos | 57 (43, 72) | 2.7 (2.1, 3.4) | 127 (106, 153) | 3.1 (2.7, 3.7) | 15.6 (-13.4, 55.1) |

| | | | | | |
|---|----------------------|-------------------|-------------------------|-------------------|-------------------------|
| Malaysia | 189 (173, 210) | 2.2 (2, 2.4) | 791 (693, 927) | 3.3 (2.9, 3.8) | 50.9 (24, 86.1) |
| Maldives | 2 (1, 3) | 2.4 (1.8, 3) | 7 (6, 8) | 2.5 (2.2, 2.8) | 3.2 (-20.4, 51.3) |
| Mauritius | 28 (27, 30) | 3.8 (3.6, 4.1) | 72 (65, 79) | 4.3 (3.9, 4.7) | 12.8 (1.1, 26.9) |
| Myanmar | 795 (633, 985) | 3.4 (2.8, 4.2) | 1793 (1539, 2135) | 4.1 (3.6, 4.9) | 20.7 (-6.7, 50.5) |
| Philippines | 751 (699, 802) | 2.5 (2.3, 2.6) | 2490 (2165, 2831) | 3.6 (3.2, 4.1) | 46.1 (25.9, 70.4) |
| Sri Lanka | 199 (184, 213) | 1.9 (1.7, 2) | 623 (512, 731) | 2.6 (2.1, 3) | 38.8 (11.7, 64.6) |
| Seychelles | 3 (3, 4) | 5.7 (5.1, 6.2) | 6 (6, 7) | 5.9 (5.5, 6.4) | 4.4 (-8.7, 18.3) |
| Thailand | 1142 (1053, 1230) | 3.2 (2.9, 3.4) | 3232 (2891, 3625) | 3.3 (3, 3.7) | 4.6 (-8.2, 19.4) |
| East Timor | 6 (5, 7) | 2 (1.6, 2.4) | 22 (17, 30) | 2.9 (2.3, 3.8) | 42.7 (6.1, 84.3) |
| Vietnam | 725 (643, 809) | 1.8 (1.6, 2) | 2671 (2287, 3112) | 3 (2.6, 3.5) | 71.1 (41, 107) |
| Oceania | 74 (66, 95) | 2.6 (2.3, 3.2) | 209 (182, 254) | 3.3 (3, 4) | 28.7 (14.5, 44.7) |
| American Samoa | 1 (1, 1) | 3.7 (3.2, 4.4) | 2 (2, 2) | 5.1 (4.5, 5.8) | 37.9 (9, 69.9) |
| Federated States of Micronesia | 2 (1, 2) | 3.3 (2.8, 3.9) | 3 (2, 3) | 4.2 (3.7, 4.9) | 27.9 (3.2, 54.9) |
| Fiji | 10 (8, 11) | 2.7 (2.3, 3.2) | 24 (21, 28) | 3.4 (3, 3.9) | 27 (1.2, 63) |
| Guam | 3 (3, 3) | 3.8 (3.4, 4.2) | 10 (9, 12) | 5.9 (5.3, 6.5) | 55.9 (28.3, 82.1) |
| Kiribati | 1 (1, 1) | 2.1 (1.9, 2.3) | 2 (1, 2) | 2.7 (2.3, 3.2) | 28.5 (3.3, 56.5) |
| Marshall Islands | 1 (0, 1) | 3.5 (2.6, 4.4) | 2 (1, 2) | 5.1 (3.9, 6.4) | 46.4 (19.8, 73.6) |
| Northern Mariana Islands | 1 (1, 1) | 4.2 (3.6, 5.1) | 3 (2, 3) | 5.6 (5, 6.3) | 33.8 (7.7, 59.8) |
| Papua New Guinea | 43 (35, 61) | 2.3 (1.9, 3.2) | 128 (103, 172) | 3 (2.5, 3.9) | 29.5 (9, 52.9) |
| Samoa | 2 (2, 3) | 2.8 (2.4, 3.3) | 4 (4, 5) | 3.1 (2.7, 3.5) | 9.3 (-9.6, 33) |
| Solomon Islands | 3 (3, 4) | 2.3 (1.9, 2.8) | 9 (8, 11) | 2.9 (2.5, 3.5) | 26.2 (3.2, 53.4) |
| Tonga | 2 (2, 2) | 3.7 (3.1, 4.2) | 4 (3, 4) | 4.5 (4, 5.3) | 23.8 (2.7, 49.9) |
| Vanuatu | 2 (1, 3) | 3.1 (2.2, 4.4) | 7 (5, 10) | 4.3 (3, 6.3) | 38.7 (10.8, 75.6) |
| North Africa and Middle East | 4834 (4271, 5963) | 2.8 (2.5, 3.5) | 15214 (14377, 16007) | 3.7 (3.5, 3.9) | 32.9 (3.1, 48.5) |
| Afghanistan | 154 (76, 292) | 2.2 (1.1, 4) | 270 (193, 386) | 2.6 (2, 3.7) | 22.3 (-14.7, 107.3) |
| Algeria | 214 (190, 244) | 1.7 (1.5, 1.9) | 861 (777, 942) | 2.7 (2.4, 2.9) | 55.6 (31.4, 79) |
| Bahrain | 9 (8, 10) | 5.1 (4.6, 5.7) | 33 (29, 37) | 3.7 (3.3, 4.2) | -27.4 (-39.3, -13.2) |
| Egypt | 501 (460, 542) | 1.7 (1.6, 1.9) | 1584 (1334, 1832) | 2.7 (2.3, 3) | 53.4 (30.2, 78.4) |
| Iran | 540 (494, 618) | 2.1 (1.9, 2.4) | 2593 (2468, 2712) | 3.8 (3.7, 4) | 84.3 (56.2, 104.9) |
| Iraq | 264 (217, 348) | 3.4 (2.8, 4.5) | 641 (589, 698) | 2.8 (2.6, 3) | -18.7 (-38.9, 1.4) |
| Jordan | 35 (28, 42) | 2.5 (2, 2.9) | 206 (177, 237) | 3.7 (3.2, 4.3) | 52.3 (18.9, 98) |

| | | | | | |
|------------------------------------|----------------------|-------------------|-------------------------|-------------------|------------------------|
| Kuwait | 19 (17, 20) | 3 (2.7, 3.2) | 73 (66, 81) | 3 (2.8, 3.4) | 1.7 (-11.7, 17) |
| Lebanon | 78 (68, 89) | 3.5 (3.1, 4) | 279 (247, 313) | 4.8 (4.2, 5.4) | 35.6 (11, 62.2) |
| Libya | 88 (69, 111) | 4.6 (3.6, 5.8) | 289 (239, 354) | 6.4 (5.4, 7.8) | 39.6 (-2.7, 86.2) |
| Morocco | 258 (229, 290) | 1.8 (1.6, 2) | 840 (706, 996) | 2.7 (2.3, 3.2) | 50.5 (22, 86.2) |
| Palestine | 32 (26, 40) | 3.6 (2.9, 4.5) | 105 (95, 116) | 4.4 (4, 4.9) | 21.9 (-4.1, 54) |
| Oman | 13 (11, 16) | 2 (1.6, 2.4) | 57 (47, 69) | 3.1 (2.5, 3.7) | 58.3 (16, 102.3) |
| Qatar | 6 (5, 8) | 6.1 (5.1, 7.4) | 36 (29, 45) | 4.5 (3.7, 5.4) | -26.1 (-46.1, -0.7) |
| Saudi Arabia | 113 (93, 142) | 1.8 (1.5, 2.3) | 588 (495, 697) | 3.9 (3.4, 4.5) | 109.7 (49.1, 178.6) |
| Sudan | 131 (105, 169) | 1.4 (1.1, 1.8) | 396 (311, 503) | 2.3 (1.8, 2.9) | 62.1 (23, 107) |
| Syria | 102 (89, 121) | 1.9 (1.7, 2.3) | 388 (319, 459) | 3.1 (2.5, 3.6) | 58.6 (15.3, 103.1) |
| Tunisia | 95 (81, 110) | 1.9 (1.6, 2.2) | 331 (262, 402) | 2.8 (2.2, 3.3) | 44.5 (7, 90.2) |
| Turkey | 2096 (1679, 2789) | 5.8 (4.7, 7.6) | 5111 (4606, 5634) | 5.8 (5.3, 6.4) | 1.5 (-25, 24.8) |
| United Arab Emirates | 19 (13, 30) | 3.9 (2.5, 6.2) | 261 (160, 386) | 6.6 (3.7, 10) | 67.1 (8.1, 128.9) |
| Yemen | 65 (42, 99) | 1.3 (0.9, 2) | 259 (195, 329) | 2.1 (1.6, 2.6) | 61.9 (5.1, 154.1) |
| South Asia | 8488 (7680, 9753) | 1.5 (1.3, 1.7) | 34252 (32651, 36377) | 2.7 (2.5, 2.8) | 79.1 (54.3, 100.5) |
| Bangladesh | 709 (599, 881) | 1.5 (1.3, 1.9) | 2051 (1678, 2488) | 1.7 (1.4, 2.1) | 14.1 (-5.2, 36.8) |
| Bhutan | 4 (3, 6) | 1.8 (1.4, 2.5) | 17 (13, 21) | 2.9 (2.2, 3.7) | 58.4 (20.1, 116.8) |
| India | 6824 (6096, 7898) | 1.5 (1.3, 1.7) | 29059 (27506, 31343) | 2.8 (2.6, 3) | 87.1 (58.3, 110.5) |
| Nepal | 134 (92, 187) | 1.5 (1, 2) | 531 (369, 743) | 2.6 (1.8, 3.6) | 76.8 (41.8, 115.8) |
| Pakistan | 817 (682, 933) | 1.4 (1.2, 1.6) | 2593 (2140, 3094) | 2.5 (2.1, 2.9) | 71.1 (39, 113.3) |
| Southern sub-Saharan Africa | 1168 (1025, 1324) | 4.3 (3.7, 4.9) | 2740 (2582, 2892) | 5.1 (4.8, 5.4) | 20.2 (8.3, 35.6) |
| Botswana | 22 (18, 27) | 3.8 (3.2, 4.6) | 63 (51, 77) | 5.1 (4.1, 6) | 32.4 (1.8, 71) |
| Lesotho | 32 (27, 40) | 3.3 (2.8, 4.1) | 61 (47, 76) | 5.4 (4.1, 6.7) | 63.7 (24.1, 118.1) |
| Namibia | 18 (15, 20) | 2.5 (2.2, 2.8) | 45 (38, 53) | 3.3 (2.8, 3.9) | 33.6 (9.4, 63.9) |
| South Africa | 919 (789, 1076) | 4.4 (3.7, 5.2) | 2150 (2001, 2301) | 5 (4.7, 5.4) | 14.7 (1.6, 30) |
| Swaziland | 14 (11, 18) | 4.9 (4, 6.4) | 34 (25, 44) | 6.4 (4.7, 8.2) | 31.1 (-0.9, 74.1) |
| Zimbabwe | 163 (144, 184) | 4 (3.6, 4.5) | 387 (325, 450) | 5.8 (4.9, 6.7) | 43.7 (19.2, 75.3) |
| Western sub-Saharan Africa | 2468 (2070, 3011) | 2.9 (2.4, 3.5) | 7021 (6035, 8278) | 4.2 (3.6, 4.9) | 45.7 (23.2, 75.3) |
| Benin | 49 (42, 56) | 2.4 (2.1, 2.8) | 188 (148, 239) | 4.3 (3.4, 5.3) | 76.7 (37.2, 124.2) |
| Burkina Faso | 94 (75, 112) | 2.2 (1.7, 2.6) | 299 (248, 369) | 3.6 (3, 4.4) | 65.5 (34.2, 112.3) |
| Cameroon | 145 (120, 169) | 3.3 (2.8, 3.9) | 594 (452, 762) | 5.5 (4.3, 7) | 66.9 (31.7, 109.6) |

| | | | | | |
|-----------------------------------|----------------------|-------------------|----------------------|-------------------|------------------------|
| Cape Verde | 8 (7, 9) | 3.6 (3.1, 4.1) | 29 (26, 32) | 6.7 (6, 7.4) | 88.4 (56.8, 128.8) |
| Chad | 50 (40, 63) | 1.8 (1.4, 2.2) | 162 (136, 195) | 3.2 (2.7, 3.8) | 80.4 (45.3, 130.3) |
| Côte d'Ivoire | 74 (63, 85) | 1.9 (1.6, 2.2) | 241 (195, 291) | 2.5 (2.1, 3) | 33.3 (0.6, 67.4) |
| The Gambia | 6 (5, 8) | 1.8 (1.6, 2.2) | 26 (21, 31) | 2.9 (2.3, 3.5) | 56.2 (21.3, 96.2) |
| Ghana | 311 (259, 368) | 5 (4.2, 5.9) | 1152 (973, 1356) | 7.8 (6.6, 9.2) | 55.8 (24.5, 94.5) |
| Guinea | 65 (58, 73) | 1.9 (1.8, 2.2) | 144 (113, 187) | 2.8 (2.2, 3.6) | 43 (9.6, 89.9) |
| Guinea-Bissau | 12 (8, 15) | 2.9 (2.1, 3.7) | 31 (22, 40) | 4.7 (3.4, 6) | 61.1 (26.9, 95.8) |
| Liberia | 27 (21, 34) | 2.3 (1.9, 3) | 64 (48, 83) | 3.6 (2.7, 4.6) | 52.8 (21.8, 90.5) |
| Mali | 92 (81, 104) | 2.3 (2, 2.6) | 230 (185, 283) | 2.9 (2.3, 3.5) | 25.6 (-0.8, 63.9) |
| Mauritania | 31 (27, 37) | 3 (2.6, 3.6) | 95 (76, 114) | 5 (4, 6) | 63.5 (27.9, 112) |
| Niger | 51 (41, 64) | 1.8 (1.5, 2.3) | 182 (142, 231) | 2.6 (2.1, 3.3) | 45.5 (18.1, 84.1) |
| Nigeria | 1303 (931, 1843) | 3 (2.2, 4.2) | 3052 (2173, 4293) | 4 (2.9, 5.5) | 32.7 (-2.7, 88.1) |
| São Tomé and Príncipe | 1 (1, 1) | 1.2 (1.1, 1.4) | 2 (2, 3) | 2.2 (1.6, 3.1) | 78.7 (35.7, 136.8) |
| Senegal | 82 (71, 94) | 2.6 (2.2, 2.9) | 291 (248, 338) | 4.2 (3.6, 4.9) | 64.9 (34.8, 100.8) |
| Sierra Leone | 40 (32, 48) | 2.1 (1.7, 2.5) | 116 (94, 142) | 3.6 (2.9, 4.3) | 73 (29.5, 130.2) |
| Togo | 27 (23, 32) | 2.3 (1.9, 2.6) | 122 (96, 153) | 3.8 (3, 4.7) | 66.6 (33.9, 107.1) |
| Eastern sub-Saharan Africa | 1891 (1616, 2346) | 2.5 (2.2, 3.1) | 4495 (3976, 4996) | 3 (2.7, 3.3) | 18.3 (-3, 45.5) |
| Burundi | 62 (45, 80) | 2.9 (2.1, 3.6) | 96 (78, 115) | 2.5 (2, 2.9) | -13.9 (-33.7, 17.9) |
| Comoros | 7 (5, 8) | 3.2 (2.7, 3.7) | 15 (12, 19) | 3.5 (2.8, 4.3) | 9.9 (-16.4, 41.8) |
| Djibouti | 5 (3, 6) | 3.3 (2.4, 4.3) | 23 (16, 32) | 4.2 (3, 5.8) | 29.5 (-7.7, 83.2) |
| Eritrea | 30 (23, 38) | 3.1 (2.5, 3.8) | 88 (63, 112) | 4 (3, 5) | 28.9 (-3, 78.2) |
| Ethiopia | 536 (335, 894) | 2.9 (1.9, 4.7) | 1048 (811, 1284) | 2.8 (2.2, 3.5) | -0.9 (-31.9, 60.9) |
| Kenya | 186 (143, 219) | 2.2 (1.7, 2.6) | 659 (534, 787) | 3.2 (2.6, 3.8) | 43.4 (26.3, 59.4) |
| Madagascar | 121 (106, 139) | 2.3 (2, 2.6) | 241 (195, 295) | 2.4 (1.9, 2.9) | 3.6 (-16.2, 30.1) |
| Malawi | 83 (56, 102) | 2.1 (1.5, 2.6) | 182 (155, 212) | 2.5 (2.2, 3) | 19.8 (-4.3, 74) |
| Mozambique | 116 (101, 132) | 2 (1.8, 2.3) | 278 (219, 348) | 2.8 (2.2, 3.5) | 37.9 (4.4, 84.6) |
| Rwanda | 87 (67, 110) | 3 (2.4, 3.7) | 164 (136, 204) | 3 (2.5, 3.7) | 1.1 (-25.3, 47.6) |
| Somalia | 65 (39, 96) | 2.6 (1.7, 3.7) | 181 (129, 246) | 2.9 (2.1, 4) | 14.3 (-19.9, 74.6) |
| South Sudan | 69 (44, 106) | 2.9 (1.9, 4.4) | 115 (81, 164) | 3.2 (2.3, 4.5) | 9.4 (-22.5, 60.5) |
| Tanzania | 292 (229, 346) | 2.6 (2.2, 3.1) | 747 (615, 939) | 3.2 (2.7, 4) | 21.3 (-3, 56.3) |
| Uganda | 122 (104, 143) | 1.9 (1.6, 2.2) | 405 (341, 475) | 3.1 (2.7, 3.7) | 67.6 (35.8, 104.9) |

| | | | | | |
|-----------------------------------|-------------------|-------------------|----------------------|-------------------|-----------------------|
| Zambia | 110 (89, 129) | 3.8 (3.1, 4.4) | 250 (199, 295) | 4.1 (3.3, 4.8) | 7.2 (-11.9, 29.6) |
| Central sub-Saharan Africa | 625 (534, 736) | 2.8 (2.4, 3.3) | 1468 (1268, 1662) | 3.1 (2.7, 3.6) | 8.7 (-10.5, 29.7) |
| Angola | 118 (87, 162) | 3.1 (2.3, 4.1) | 393 (323, 482) | 3.9 (3.2, 4.7) | 27.7 (-1.8, 71.7) |
| Central African Republic | 35 (24, 50) | 3 (2.2, 4.3) | 62 (43, 82) | 3 (2.3, 3.9) | 0.8 (-20.8, 27.8) |
| Congo | 43 (33, 54) | 4 (3.2, 4.9) | 112 (80, 147) | 4.8 (3.6, 6.1) | 19.3 (-14.7, 58.2) |
| DR Congo | 400 (331, 479) | 2.6 (2.1, 3.1) | 823 (659, 1009) | 2.6 (2.1, 3.2) | -1.3 (-22.9, 25.4) |
| Equatorial Guinea | 6 (4, 9) | 3.1 (2.1, 4.6) | 24 (16, 34) | 5.5 (3.8, 7.8) | 80.9 (16.7, 177.8) |
| Gabon | 24 (19, 31) | 4.2 (3.5, 5.5) | 55 (44, 65) | 5.5 (4.5, 6.4) | 29.7 (-3.4, 64.4) |

Appendix Table 4: DALYs of pancreatic cancer in 1990 and 2017 for both sexes and percentage change of age-standardised rates by location

| | 1990 | | 2017 | | Percentage change in age-standardised rates between 1990 and 2017 |
|----------------------------------|-------------------------------|-------------------------|-------------------------------|-------------------------|---|
| | Counts (95% UI) | Rate (95% UI) | Counts (95% UI) | Rate (95% UI) | |
| Global | 4380941 (4309037, 4475167) | 104.9 (103.2, 107) | 9080004 (8894128, 9256346) | 112.2 (110, 114.4) | 7 (3.3, 9.8) |
| High SDI | 2122475 (2104398, 2139751) | 167.4 (166.0, 168.8) | 3508115 (3431262, 3588612) | 169.6 (165.9, 173.6) | 1.3 (-1.0, 3.7) |
| High-middle SDI | 1176316 (1138844, 1213206) | 118.9 (115.1, 122.6) | 2358514 (2285397, 2431056) | 128.6 (124.6, 132.5) | 8.2 (3.2, 13.0) |
| Middle SDI | 620124 (601955, 640019) | 59.7 (58.0, 61.5) | 1847413 (1756278, 1922329) | 81.1 (77.2, 84.3) | 36.0 (27.8, 42.3) |
| Low-middle SDI | 297782 (274949, 322416) | 49.1 (45.5, 53.1) | 912709 (862808, 981014) | 74.0 (70.1, 79.5) | 50.9 (36.6, 63.7) |
| Low SDI | 150650 (127390, 187712) | 42.2 (36.4, 52.2) | 416395 (387858, 446127) | 56.5 (52.5, 60.5) | 33.9 (13.3, 55.4) |
| High-income North America | 608519 (601456, 614961) | 174.9 (172.8, 176.7) | 1039446 (1012933, 1073143) | 175.8 (171.2, 181.6) | 0.5 (-2.5, 4.5) |
| Canada | 59814 (58426, 61232) | 181.5 (177.5, 185.7) | 101312 (94227, 108834) | 158.3 (147.1, 170) | -12.8 (-19, -5.9) |
| Greenland | 156 (141, 170) | 418.1 (378.3, 459.4) | 255 (231, 278) | 353.2 (322.6, 384.8) | -15.5 (-25.5, -2.3) |
| USA | 548536 (541980, 554289) | 174.2 (172, 176.2) | 937862 (912374, 968458) | 177.9 (172.9, 183.9) | 2.1 (-1.1, 6.3) |
| Australasia | 33658 (32909, 34465) | 140.5 (137.5, 143.8) | 66154 (60448, 72235) | 144.8 (132.2, 158.3) | 3.1 (-6.2, 13) |
| Australia | 28098 (27372, 28805) | 140.7 (137.3, 144.3) | 56279 (50819, 62396) | 146.4 (131.9, 162.6) | 4 (-6.6, 15.9) |
| New Zealand | 5560 (5319, 5832) | 139.2 (133.2, 146) | 9875 (9211, 10637) | 136.3 (127.1, 146.9) | -2 (-9.4, 6.1) |
| High-income Asia-Pacific | 338678 (334193, 343623) | 161.1 (159, 163.4) | 654958 (632650, 681450) | 162.7 (156.8, 169.9) | 1 (-2.8, 5.2) |
| Brunei | 111 (97, 126) | 100 (86.8, 114) | 422 (380, 468) | 124.2 (111.8, 137.9) | 24.2 (3.2, 46.1) |
| Japan | 285850 (282017, 289930) | 162.4 (160.2, 164.7) | 528734 (511265, 549622) | 172.2 (166.2, 179.9) | 6 (2.4, 10.4) |
| Singapore | 1911 (1816, 2010) | 77.4 (73.6, 81.4) | 5956 (5449, 6523) | 84.5 (77.5, 92.6) | 9.1 (-1.2, 21.7) |
| South Korea | 50806 (49109, 52572) | 151.9 (146.8, 157.3) | 119846 (110061, 131500) | 139.2 (127.9, 152.5) | -8.4 (-16.3, 0.6) |
| Western Europe | 936850 (925996, 947001) | 164.1 (162.3, 165.8) | 1415235 (1364591, 1471686) | 172.4 (166.2, 179.5) | 5.1 (1.3, 9.5) |
| Andorra | 98 (76, 117) | 162.4 (125.5, 194.7) | 205 (157, 250) | 155.9 (119.6, 191) | -4 (-23.5, 19.9) |
| Austria | 21816 (21169, 22471) | 189.2 (183.5, 195.1) | 32338 (30250, 34760) | 196.7 (184.4, 211.9) | 3.9 (-3.5, 12.5) |
| Belgium | 25461 (24602, 26312) | 166.6 (161.2, 172.3) | 33819 (31359, 36521) | 162.5 (150.4, 175.8) | -2.5 (-10.2, 5.7) |
| Cyprus | 837 (739, 986) | 97.9 (86.5, 115.9) | 2509 (2227, 2824) | 134.6 (119.6, 151.8) | 37.6 (10.1, 65.1) |
| Denmark | 14512 (14015, 15023) | 186.3 (179.9, 193.1) | 20458 (18985, 22018) | 189.8 (176.4, 203.9) | 1.9 (-6.3, 10.9) |
| Finland | 14110 (13688, 14550) | 197.5 (191.6, 203.6) | 21363 (19768, 23029) | 190.4 (176.3, 205.3) | -3.6 (-11.3, 5.1) |
| France | 120583 (117574, 124081) | 150.6 (146.9, 154.6) | 208680 (193467, 225809) | 172.9 (160.1, 188.4) | 14.8 (5.8, 25.9) |
| Germany | 222391 (216078, 228308) | 178 (173.2, 182.7) | 337219 (301517, 374333) | 198.4 (176.6, 220.8) | 11.4 (-1, 24.6) |

| | | | | | |
|-------------------------------|----------------------------|-------------------------|----------------------------|-------------------------|------------------------|
| Greece | 21223 (20356, 22030) | 138.1 (132.6, 143.2) | 35468 (33151, 37891) | 171 (159.3, 183.1) | 23.8 (14.6, 33.6) |
| Iceland | 513 (483, 544) | 181.4 (171.1, 192.6) | 864 (806, 925) | 170 (158.5, 182) | -6.3 (-14.5, 1.8) |
| Ireland | 7726 (7452, 8020) | 186.7 (180, 194) | 11310 (10316, 12403) | 159 (144.8, 174.6) | -14.9 (-22.6, -6.1) |
| Israel | 8320 (7909, 8747) | 168.4 (160.2, 177) | 19344 (17919, 20929) | 178.8 (165.8, 193.6) | 6.2 (-2.3, 15.3) |
| Italy | 151015 (147114, 155088) | 170.8 (166.5, 175.3) | 210986 (195925, 229251) | 164.5 (152.5, 178.9) | -3.7 (-11.1, 4.7) |
| Luxembourg | 997 (941, 1057) | 181.1 (171.1, 191.8) | 1734 (1507, 1954) | 186.6 (162.1, 210.4) | 3 (-11.3, 17.8) |
| Malta | 713 (670, 757) | 162.1 (152.6, 171.8) | 1562 (1441, 1684) | 183.8 (170, 197.7) | 13.4 (3.3, 24.2) |
| Netherlands | 34740 (33776, 35729) | 175 (170.1, 179.8) | 63054 (58973, 67419) | 196.8 (184.1, 210.7) | 12.4 (4.1, 21.1) |
| Norway | 11027 (10830, 11220) | 170.5 (167.4, 173.6) | 14313 (13763, 15000) | 161.5 (155.2, 169.4) | -5.3 (-9.4, 0) |
| Portugal | 19073 (18391, 19750) | 136.9 (132.2, 141.6) | 28872 (26614, 31390) | 136 (125.5, 148.3) | -0.7 (-9.3, 9) |
| Spain | 71468 (69612, 73586) | 130.7 (127.3, 134.6) | 124312 (115592, 133269) | 146.2 (135.7, 156.9) | 11.9 (3.9, 20.7) |
| Sweden | 25353 (24734, 26023) | 176.2 (171.7, 180.8) | 31083 (29278, 32934) | 162.8 (153.4, 172.7) | -7.6 (-13.4, -1.3) |
| Switzerland | 17101 (16442, 17746) | 168.3 (161.8, 174.8) | 23940 (22085, 25977) | 151.6 (139.5, 164.9) | -9.9 (-18.2, -1.1) |
| United Kingdom | 146871 (145152, 148660) | 165.3 (163.4, 167.2) | 190334 (186409, 194978) | 163.3 (159.9, 167.2) | -1.2 (-3.6, 1.4) |
| Southern Latin America | 80271 (75978, 84619) | 167.7 (158.9, 176.7) | 140589 (130052, 152476) | 174 (160.9, 188.8) | 3.8 (-6, 13.8) |
| Argentina | 58774 (54818, 62835) | 175.8 (164.2, 187.8) | 97125 (87369, 108550) | 185.5 (167.5, 207.1) | 5.5 (-7.1, 18.8) |
| Chile | 13561 (12792, 14332) | 129.7 (122.5, 136.9) | 30974 (27703, 34779) | 133.1 (118.9, 149.2) | 2.6 (-9.9, 16.6) |
| Uruguay | 7932 (7471, 8440) | 202.4 (190.7, 215.2) | 12483 (11165, 13981) | 247.4 (220.6, 277.4) | 22.2 (7.3, 38.4) |
| Eastern Europe | 471057 (440220, 508500) | 162.8 (152, 176) | 574773 (562165, 589416) | 172.8 (168.9, 177.4) | 6.2 (-0.8, 13.2) |
| Belarus | 17151 (16103, 18239) | 128.8 (121, 136.7) | 22137 (19904, 24950) | 143.1 (128.8, 162) | 11.2 (0.2, 24.1) |
| Estonia | 4048 (3860, 4252) | 194.2 (185, 203.9) | 4647 (4061, 5323) | 190.1 (165.7, 218.8) | -2.1 (-15.2, 12.1) |
| Latvia | 7348 (6945, 7730) | 199.8 (188.8, 210.1) | 7628 (6730, 8607) | 207.4 (182.6, 234.8) | 3.8 (-8.3, 17.8) |
| Lithuania | 8608 (8213, 9016) | 185.7 (177.4, 194.5) | 9976 (9289, 10730) | 190.8 (176.9, 205.8) | 2.8 (-5.7, 11.2) |
| Moldova | 7510 (6998, 8145) | 158.7 (147.9, 171.7) | 9674 (9015, 10391) | 172.6 (161.2, 185.6) | 8.7 (-0.2, 18.9) |
| Russia | 336108 (318196, 354399) | 178.7 (169, 188.7) | 387360 (380193, 394135) | 169.7 (166.6, 172.8) | -5 (-9.7, 1.1) |
| Ukraine | 90285 (77470, 110854) | 124.2 (107.2, 152.5) | 133350 (124352, 142789) | 186.1 (173, 199.9) | 49.9 (23.4, 73.5) |
| Central Europe | 287969 (282535, 292904) | 187.9 (184.5, 191.1) | 400461 (388559, 412967) | 197.2 (191.3, 203.5) | 4.9 (1.3, 8.7) |
| Albania | 1642 (1511, 1786) | 71.1 (65.4, 77.5) | 5056 (4141, 6120) | 122.4 (100.6, 148.2) | 72.1 (36.7, 114.9) |
| Bosnia and Herzegovina | 6933 (6557, 7354) | 155.7 (147.2, 164.8) | 11268 (10275, 12326) | 189.1 (173.1, 206.5) | 21.4 (10, 33.5) |
| Bulgaria | 18511 (17836, 19227) | 143.5 (138.3, 149) | 26858 (24917, 28723) | 200.9 (186.3, 216.4) | 40 (28.7, 51.1) |
| Croatia | 11728 (11274, 12173) | 176.7 (170.1, 183) | 14425 (13468, 15549) | 173.6 (161.9, 187) | -1.7 (-9.2, 6.6) |

| | | | | | |
|------------------------------|-------------------------|-------------------------|----------------------------|-------------------------|-------------------------|
| Czech Republic | 35502 (34347, 36539) | 256.1 (248, 263.6) | 44666 (41559, 47747) | 224.5 (209.2, 239.7) | -12.3 (-18.9, -4.9) |
| Hungary | 32991 (32007, 34015) | 221.9 (215.4, 228.7) | 40834 (38253, 43458) | 226.8 (212.4, 241.5) | 2.2 (-5, 9.7) |
| Macedonia | 2591 (2423, 2774) | 129 (120.7, 137.7) | 5759 (5164, 6503) | 171.9 (154.6, 193.7) | 33.3 (18.4, 51.6) |
| Montenegro | 1010 (891, 1124) | 154.2 (136, 172) | 1751 (1556, 1975) | 176.4 (157.3, 199) | 14.4 (-2.4, 31.3) |
| Poland | 97089 (94340, 99761) | 213 (207.4, 218.7) | 126150 (117742, 135448) | 190.6 (177.9, 204.5) | -10.5 (-17, -3.3) |
| Romania | 42983 (41560, 44548) | 147.1 (142.3, 152.1) | 66491 (62571, 70635) | 194.3 (182.5, 206.7) | 32.1 (23.4, 41.2) |
| Serbia | 21234 (18426, 23951) | 175.6 (152.8, 197.9) | 31450 (28882, 34038) | 204.6 (187.9, 222.2) | 16.5 (1.7, 36.2) |
| Slovakia | 11180 (10610, 11749) | 184 (174.4, 193.3) | 18353 (16818, 19937) | 204.5 (187.7, 222.2) | 11.1 (-0.1, 23.6) |
| Slovenia | 4575 (4381, 4774) | 181.2 (173.9, 189) | 7400 (6819, 8042) | 185.1 (170.6, 200.5) | 2.1 (-6.8, 11.8) |
| Central Asia | 29831 (27781, 31731) | 59.8 (55.3, 63.7) | 84147 (80529, 88316) | 108.2 (103.6, 113.4) | 81 (70.6, 94.3) |
| Armenia | 4668 (4243, 5078) | 160.5 (146.8, 174) | 8027 (7588, 8486) | 191.5 (180.7, 202.2) | 19.3 (8.2, 33.3) |
| Azerbaijan | 4585 (4044, 5300) | 85.4 (73.9, 99.8) | 12801 (11330, 14327) | 129.9 (115.4, 144.9) | 52.1 (31.3, 76.6) |
| Georgia | 4749 (4195, 5651) | 73.6 (65.4, 87.2) | 7268 (6742, 7811) | 129.1 (120.1, 138.9) | 75.3 (51.8, 98.7) |
| Kazakhstan | 3976 (3457, 4461) | 29.7 (25.8, 33.1) | 23610 (21737, 25865) | 131.3 (121.2, 143.4) | 342.3 (299.3, 403.4) |
| Kyrgyzstan | 3108 (2870, 3378) | 97.8 (90.5, 106.1) | 4460 (4071, 4969) | 94.4 (86.8, 104.8) | -3.5 (-14.4, 8.7) |
| Mongolia | 757 (692, 833) | 68 (62.4, 74.6) | 2746 (2412, 3142) | 108.1 (95, 122.5) | 58.9 (37.1, 82.6) |
| Tajikistan | 2105 (1850, 2462) | 71.9 (63, 83.8) | 4608 (4135, 5116) | 82.8 (74.6, 91.9) | 15.1 (-3.7, 35) |
| Turkmenistan | 641 (599, 685) | 31.8 (29.7, 34) | 3253 (2969, 3544) | 80.7 (74, 87.8) | 154 (126.7, 183.3) |
| Uzbekistan | 5242 (3913, 6090) | 43.1 (31.6, 50.5) | 17374 (15473, 19491) | 75.8 (67.7, 84.7) | 75.7 (45.6, 142.4) |
| Central Latin America | 79398 (77981, 80676) | 87.9 (86.4, 89.3) | 223279 (215098, 230887) | 94.3 (90.9, 97.5) | 7.2 (2.8, 11.5) |
| Colombia | 20470 (19765, 21206) | 107.4 (103.6, 111.3) | 44758 (39437, 50426) | 83 (73.1, 93.6) | -22.7 (-31.7, -12.8) |
| Costa Rica | 1281 (1221, 1345) | 70.2 (67, 73.8) | 6301 (5753, 6925) | 127.5 (116.3, 140.1) | 81.4 (63.1, 102.1) |
| El Salvador | 1134 (1057, 1214) | 36.5 (34, 39.1) | 5410 (4490, 6388) | 95.8 (79.4, 113.3) | 162.3 (116.1, 216.6) |
| Guatemala | 1183 (1116, 1253) | 29.8 (28.1, 31.5) | 8061 (7239, 8878) | 71.8 (64.5, 79.1) | 141 (113.8, 169.7) |
| Honduras | 1131 (1000, 1267) | 49.5 (43.6, 55.3) | 5465 (4431, 6607) | 88.1 (71.2, 105.1) | 77.8 (40.4, 119.7) |
| Mexico | 49246 (48286, 50144) | 106.2 (104, 108.1) | 117011 (113224, 120451) | 99.7 (96.5, 102.6) | -6.1 (-9.7, -2.6) |
| Nicaragua | 628 (569, 686) | 37.6 (34, 41.3) | 3196 (2820, 3614) | 69.1 (61.2, 78.5) | 83.7 (56.4, 116.8) |
| Panama | 900 (854, 953) | 57.5 (54.5, 60.8) | 3323 (3060, 3612) | 84 (77.5, 91.4) | 46.1 (32.5, 61) |
| Venezuela | 3425 (3256, 3608) | 33 (31.4, 34.8) | 29755 (25486, 34583) | 102.8 (88, 119.1) | 211.2 (165.1, 263.9) |
| Andean Latin America | 10605 (9945, 11390) | 48.4 (45.4, 52) | 51413 (46385, 56234) | 94.6 (85.5, 103.5) | 95.5 (73.7, 121.3) |
| Bolivia | 2575 (1981, 3135) | 74.5 (57.9, 90.3) | 10369 (8240, 12914) | 117.2 (93.6, 146.1) | 57.3 (17.9, 110.7) |

| | | | | | |
|---|----------------------------|-------------------------|-------------------------------|-------------------------|-------------------------|
| Ecuador | 2116 (2013, 2225) | 37.2 (35.4, 39.1) | 13346 (12053, 14814) | 89.5 (80.9, 99.3) | 140.8 (115.6, 170) |
| Peru | 5914 (5281, 6498) | 46.3 (41.3, 50.9) | 27698 (23600, 31919) | 90.7 (77.3, 104.4) | 95.9 (65.3, 132.4) |
| Caribbean | 9922 (9474, 10523) | 36.7 (35.1, 38.9) | 52432 (48549, 56876) | 102.9 (95.3, 111.6) | 180 (161.3, 198.9) |
| Antigua and Barbuda | 17 (16, 18) | 33.5 (31.1, 36.2) | 99 (91, 108) | 96.3 (88.4, 105.4) | 187 (156.1, 223.1) |
| The Bahamas | 63 (59, 68) | 38.2 (35.6, 40.9) | 375 (339, 413) | 94.4 (85.6, 103.7) | 146.9 (119.3, 177.2) |
| Barbados | 83 (78, 88) | 29.8 (28.1, 31.8) | 572 (513, 631) | 121.9 (109.5, 134.1) | 308.5 (262.6, 357.5) |
| Belize | 34 (31, 37) | 35.1 (32.1, 38.2) | 334 (309, 360) | 119.5 (110.6, 129) | 241 (205.7, 285.1) |
| Bermuda | 26 (24, 28) | 39.4 (36.5, 42.5) | 189 (172, 207) | 155.7 (140.5, 169.8) | 294.7 (243.7, 349.2) |
| Cuba | 3831 (3647, 4031) | 36.5 (34.7, 38.4) | 20125 (17811, 22501) | 110.4 (97.6, 123.5) | 202.9 (167.2, 241.6) |
| Dominica | 23 (22, 25) | 33.1 (31, 35.4) | 118 (107, 128) | 131.7 (119.7, 143.8) | 297.6 (255.3, 344.4) |
| Dominican Republic | 1304 (1180, 1433) | 32.3 (29.3, 35.4) | 9955 (8287, 11732) | 105.7 (88.1, 124.6) | 227.2 (165, 298.2) |
| Grenada | 23 (21, 24) | 33.2 (31, 35.4) | 209 (193, 225) | 147.1 (136.1, 159.5) | 343.2 (295.9, 393.2) |
| Guyana | 130 (122, 139) | 31.6 (29.4, 33.7) | 633 (559, 713) | 96.3 (85.4, 108.8) | 205 (166, 250.6) |
| Haiti | 1459 (1157, 1875) | 41.2 (33, 52.3) | 5030 (3776, 6501) | 70.4 (53.4, 89.5) | 70.8 (32.6, 125) |
| Jamaica | 539 (499, 580) | 30.4 (28.1, 32.7) | 2706 (2252, 3238) | 94 (78.1, 112.4) | 209.5 (150.5, 281.8) |
| Puerto Rico | 1578 (1497, 1667) | 42.2 (40, 44.5) | 6777 (6286, 7360) | 103.7 (96.1, 112.5) | 145.6 (123.2, 171.2) |
| Saint Lucia | 31 (29, 33) | 34.3 (32.1, 36.5) | 273 (250, 298) | 129.3 (118.3, 141) | 276.5 (238.4, 321) |
| Saint Vincent and the Grenadines | 25 (23, 27) | 33.6 (31.4, 36) | 153 (140, 166) | 112.5 (102.9, 122.1) | 234.4 (199.2, 271.1) |
| Suriname | 79 (73, 86) | 29.3 (26.8, 31.5) | 755 (665, 844) | 125.6 (111, 140.2) | 328.9 (271.1, 393.1) |
| Trinidad and Tobago | 266 (250, 283) | 30.1 (28.3, 32) | 1920 (1592, 2308) | 105.3 (87.1, 126.8) | 249.8 (187.4, 326.9) |
| Virgin Islands | 70 (62, 77) | 76.1 (68.2, 84.6) | 323 (275, 369) | 174.9 (150.2, 199.3) | 130 (89.5, 169.7) |
| Tropical Latin America | 102470 (99495, 104899) | 104.2 (101.3, 106.7) | 279240 (271910, 287254) | 117.8 (114.8, 121.2) | 13 (9.3, 18.5) |
| Brazil | 101303 (98440, 103690) | 105.6 (102.6, 108) | 273285 (265783, 281266) | 118 (114.9, 121.5) | 11.8 (8.1, 17.2) |
| Paraguay | 1167 (1027, 1307) | 50.5 (44.4, 56.5) | 5955 (4995, 7040) | 110.1 (92.6, 130.1) | 118 (76.4, 171.9) |
| East Asia | 712220 (681192, 748298) | 71.1 (68.1, 74.7) | 1993169 (1900840, 2078351) | 94.5 (90.3, 98.6) | 32.9 (23.2, 42.4) |
| China | 674107 (644044, 709655) | 71 (67.9, 74.7) | 1890853 (1801159, 1974469) | 94.3 (89.9, 98.5) | 32.8 (22.6, 42.7) |
| North Korea | 12968 (10173, 16032) | 71.1 (56.4, 86.8) | 23860 (18882, 29054) | 73.7 (58.4, 89.2) | 3.7 (-21.8, 32.8) |
| Taiwan (Province of China) | 13279 (12869, 13695) | 76.5 (74.3, 78.8) | 46348 (43371, 49608) | 122.1 (114.4, 130.5) | 59.5 (48.4, 72) |
| Southeast Asia | 169086 (157634, 183284) | 59.5 (55.7, 64.1) | 471502 (430721, 509771) | 76.7 (70.2, 82.9) | 29 (18.5, 39.1) |
| Cambodia | 3188 (2593, 3985) | 63.4 (52.5, 78.9) | 8489 (7234, 10084) | 71 (61.1, 83.6) | 11.9 (-15.1, 39.4) |
| Indonesia | 63463 (54226, 73313) | 57.1 (49.3, 65.7) | 174149 (145289, 195681) | 77.8 (65.4, 87.1) | 36.3 (21.1, 54.2) |

| | | | | | |
|---------------------------------------|----------------------------|-------------------------|----------------------------|-------------------------|-------------------------|
| Laos | 1532 (1138, 1949) | 66.2 (50.3, 83.5) | 3308 (2697, 4001) | 73.1 (60.7, 88) | 10.4 (-18.7, 52.1) |
| Malaysia | 4733 (4320, 5273) | 48.6 (44.2, 54.2) | 18842 (16228, 22408) | 71.5 (62.2, 84.2) | 47 (20.2, 82) |
| Maldives | 60 (39, 77) | 58.5 (39.6, 73.5) | 174 (156, 195) | 56 (50.1, 62.5) | -4.3 (-28.1, 49.8) |
| Mauritius | 739 (694, 784) | 91.7 (86.4, 97.2) | 1739 (1576, 1926) | 101 (91.8, 111.5) | 10.1 (-1.9, 23.8) |
| Myanmar | 21244 (16511, 26768) | 83.4 (66, 103.3) | 44776 (37732, 54328) | 95.4 (81.1, 114.6) | 14.4 (-12.3, 46.2) |
| Philippines | 20534 (19114, 21986) | 59.5 (55.4, 63.5) | 64514 (55630, 73518) | 83.6 (72.7, 95.1) | 40.5 (20, 64.5) |
| Sri Lanka | 5096 (4735, 5473) | 43.5 (40.3, 46.7) | 14437 (11758, 17173) | 56.8 (46.6, 67) | 30.7 (5, 57.2) |
| Seychelles | 80 (72, 88) | 139.1 (125, 152.8) | 155 (142, 169) | 138.5 (127.7, 150.3) | -0.4 (-13.6, 14.8) |
| Thailand | 30035 (27712, 32494) | 75.1 (69.3, 81.1) | 75517 (67304, 85361) | 76.4 (68.1, 86.1) | 1.6 (-11.2, 16.2) |
| East Timor | 161 (129, 191) | 48 (38.7, 57.6) | 548 (412, 753) | 65.8 (50, 89.9) | 37.1 (-1.2, 81.3) |
| Vietnam | 17997 (15877, 20157) | 42.3 (37.5, 47.3) | 64234 (54507, 74906) | 68.6 (58.4, 80.2) | 62.1 (32.3, 97.3) |
| Oceania | 2080 (1825, 2717) | 62.8 (56, 80.2) | 5819 (5009, 7232) | 79.5 (69.6, 96.8) | 26.6 (11.6, 43.6) |
| American Samoa | 22 (19, 25) | 86 (75.4, 101) | 55 (47, 63) | 119 (103, 135.2) | 38.3 (9.9, 69.3) |
| Federated States of Micronesia | 40 (34, 47) | 78.1 (66.2, 91) | 74 (60, 90) | 98.6 (82.7, 116.3) | 26.3 (0.2, 54.3) |
| Fiji | 259 (223, 298) | 64 (54.9, 74.2) | 616 (531, 713) | 79.2 (68.9, 91.4) | 23.9 (-1.8, 57.1) |
| Guam | 74 (66, 84) | 87.2 (77.6, 98.5) | 260 (231, 289) | 139.5 (124.4, 154.6) | 60.1 (31, 87.7) |
| Kiribati | 20 (18, 22) | 49.1 (44.3, 54.6) | 43 (36, 51) | 61.4 (51.8, 71.7) | 25.1 (0.3, 53.4) |
| Marshall Islands | 15 (11, 19) | 83.9 (62, 104.9) | 44 (32, 56) | 122.5 (90, 153.5) | 45.9 (17.6, 74.1) |
| Northern Mariana Islands | 20 (16, 25) | 95.1 (80.3, 116.6) | 70 (61, 79) | 124.9 (110, 139.7) | 31.4 (5.1, 59.6) |
| Papua New Guinea | 1236 (1005, 1780) | 58.1 (48.4, 82.1) | 3720 (2950, 5076) | 73.5 (60.1, 98.9) | 26.4 (4.6, 50.8) |
| Samoa | 63 (53, 75) | 69.7 (58.6, 82.4) | 103 (88, 122) | 72.9 (62.6, 84.5) | 4.6 (-14.7, 29.9) |
| Solomon Islands | 89 (74, 110) | 57.1 (48.1, 69.6) | 244 (206, 298) | 70.2 (59.9, 84.2) | 22.9 (-0.4, 49.6) |
| Tonga | 47 (40, 54) | 82.2 (70, 93.1) | 85 (74, 100) | 104.3 (90.6, 121.8) | 26.9 (4.6, 54.2) |
| Vanuatu | 56 (38, 82) | 75.3 (51.6, 111.4) | 183 (124, 276) | 102.8 (70.2, 154) | 36.5 (6.8, 79.2) |
| North Africa and Middle East | 125844 (109700, 154853) | 67 (59, 82.4) | 380420 (358287, 400988) | 85.7 (80.8, 90) | 27.9 (-0.8, 44.7) |
| Afghanistan | 3925 (1846, 7429) | 51.8 (24.6, 97) | 7452 (5066, 10729) | 63.5 (45.7, 90.7) | 22.7 (-16.1, 130.2) |
| Algeria | 5310 (4744, 5992) | 39.6 (35.4, 44.7) | 20793 (18686, 22721) | 61.2 (55.1, 67.1) | 54.7 (30.9, 78) |
| Bahrain | 231 (209, 255) | 113.7 (102.4, 126.4) | 895 (780, 1022) | 81.1 (71.9, 91.9) | -28.7 (-40.2, -14.4) |
| Egypt | 14065 (12826, 15270) | 43.1 (39.8, 46.6) | 44228 (37162, 51333) | 65.2 (55.2, 75.4) | 51.3 (26.3, 77.8) |
| Iran | 14154 (12882, 16201) | 48.5 (44.5, 55.2) | 61847 (58750, 64959) | 85.3 (81.1, 89.5) | 76.1 (49.2, 96.4) |
| Iraq | 6961 (5649, 9170) | 82.9 (67.5, 109.6) | 17057 (15633, 18718) | 66.5 (61.2, 72.4) | -19.8 (-40.4, 1.8) |

| | | | | | |
|------------------------------------|----------------------------|-------------------------|----------------------------|-------------------------|------------------------|
| Jordan | 949 (764, 1152) | 59.6 (48.7, 71.4) | 5224 (4499, 6007) | 82.1 (70.9, 94.5) | 37.7 (7.1, 81.5) |
| Kuwait | 517 (480, 556) | 67.4 (62.1, 73.2) | 1884 (1693, 2101) | 66.3 (59.5, 73.6) | -1.6 (-15.7, 13.7) |
| Lebanon | 2009 (1741, 2300) | 83.5 (72.7, 95.4) | 6602 (5792, 7556) | 106.9 (93.7, 122.1) | 28 (4.2, 54.7) |
| Libya | 2275 (1763, 2887) | 109.7 (85.1, 139) | 7637 (6208, 9379) | 150.6 (124.4, 184.3) | 37.3 (-4.4, 85.9) |
| Morocco | 6384 (5671, 7153) | 42.1 (37.3, 47.3) | 20328 (17005, 24349) | 61.9 (51.8, 73.9) | 47 (18.7, 84) |
| Palestine | 803 (648, 1012) | 86 (69.2, 108.7) | 2706 (2462, 3002) | 102 (92.6, 113) | 18.6 (-7.4, 51.6) |
| Oman | 349 (283, 433) | 45.5 (37.1, 56) | 1530 (1239, 1872) | 67.6 (55.1, 82) | 48.7 (7.7, 92.8) |
| Qatar | 175 (142, 217) | 133.6 (111.1, 163.8) | 1031 (835, 1280) | 94.3 (76.9, 115) | -29.4 (-48.7, -3.2) |
| Saudi Arabia | 2890 (2347, 3670) | 42.5 (34.5, 53.8) | 16276 (13452, 19581) | 84.1 (72, 98.1) | 98.1 (39, 167.1) |
| Sudan | 3309 (2573, 4300) | 33 (26.2, 42.9) | 9944 (7662, 12741) | 52.3 (41, 66.7) | 58.3 (18.8, 103.8) |
| Syria | 2682 (2294, 3176) | 46.2 (40, 54.6) | 9880 (8037, 11811) | 71.4 (58.4, 84.8) | 54.7 (13, 98.6) |
| Tunisia | 2167 (1843, 2519) | 40.4 (34.5, 46.7) | 7239 (5720, 8934) | 58.2 (46, 71.8) | 44 (5.5, 90.4) |
| Turkey | 54333 (42791, 72640) | 140.9 (111.9, 188.1) | 122526 (110531, 135189) | 137.8 (124.5, 152.1) | -2.2 (-28.5, 22.9) |
| United Arab Emirates | 570 (402, 925) | 93.5 (59.4, 151.1) | 8307 (5191, 12177) | 154.9 (86.7, 238.3) | 65.7 (4.9, 131.6) |
| Yemen | 1705 (1078, 2657) | 30.8 (19.9, 47.5) | 6676 (4995, 8676) | 48.6 (36.8, 62.1) | 57.6 (-1, 154.2) |
| South Asia | 225283 (203304, 259760) | 34.9 (31.6, 40.1) | 847963 (809838, 897741) | 60.5 (57.7, 64) | 73.2 (48.7, 92.3) |
| Bangladesh | 18534 (15729, 22955) | 36 (30.5, 44.9) | 50908 (41097, 61599) | 39.9 (32.4, 48.3) | 10.8 (-9.3, 35.2) |
| Bhutan | 117 (89, 164) | 42 (32.7, 58.3) | 400 (307, 516) | 63.2 (48.9, 81.5) | 50.4 (12.5, 111) |
| India | 182677 (162190, 212227) | 35 (31.3, 40.6) | 717037 (679172, 772713) | 63.3 (59.9, 68.2) | 81.1 (52.3, 102.7) |
| Nepal | 3593 (2500, 5052) | 34.4 (23.5, 48.1) | 12828 (8888, 18122) | 57.5 (40, 81) | 67.4 (32.3, 106.5) |
| Pakistan | 20363 (17087, 23332) | 34 (28.5, 38.9) | 66790 (54460, 80095) | 56.2 (46.2, 66.8) | 65.3 (33.5, 106.5) |
| Southern sub-Saharan Africa | 29664 (26631, 33340) | 100.1 (88.6, 113.6) | 67915 (63876, 71947) | 117.7 (110.6, 124.5) | 17.6 (6.1, 30.4) |
| Botswana | 562 (453, 704) | 89.7 (72.9, 110.7) | 1525 (1211, 1887) | 108.7 (87.1, 131.7) | 21.2 (-7.3, 58.8) |
| Lesotho | 824 (681, 1033) | 78.8 (65.6, 98.5) | 1577 (1177, 1981) | 126.4 (95.3, 158.1) | 60.4 (19.5, 118) |
| Namibia | 445 (386, 513) | 58.2 (50.7, 66.6) | 1066 (893, 1270) | 74.3 (62.8, 88.1) | 27.6 (3.1, 58.1) |
| South Africa | 23268 (20511, 26883) | 103.7 (89.9, 121.2) | 52322 (48692, 56382) | 114.8 (106.8, 123.4) | 10.7 (-1, 22.7) |
| Swaziland | 369 (303, 494) | 115 (94.7, 153.1) | 915 (652, 1199) | 151.6 (109.5, 196.9) | 31.8 (-1.2, 76.2) |
| Zimbabwe | 4196 (3681, 4762) | 93.7 (82.7, 106) | 10509 (8819, 12290) | 140 (117.5, 162.5) | 49.4 (22, 83.6) |
| Western sub-Saharan Africa | 60235 (50369, 73860) | 64.6 (54, 78.8) | 173726 (148875, 206472) | 93 (79.8, 109.8) | 44 (20.8, 73.9) |
| Benin | 1186 (1018, 1371) | 56 (48.2, 64.8) | 4694 (3669, 6059) | 96.5 (75.8, 123.9) | 72.2 (33.6, 121.2) |
| Burkina Faso | 2320 (1868, 2783) | 49.4 (39.9, 59.2) | 7439 (6173, 9185) | 80.3 (66.9, 98.8) | 62.6 (30.4, 111.1) |

| | | | | | |
|-----------------------------------|-------------------------|-----------------------|----------------------------|-------------------------|------------------------|
| Cameroon | 3744 (3096, 4391) | 77.3 (64.2, 90.1) | 15179 (11518, 19516) | 125.6 (95.7, 161.4) | 62.5 (27.8, 104.9) |
| Cape Verde | 191 (164, 218) | 84.1 (72.6, 96) | 658 (591, 727) | 151.5 (135.6, 167.1) | 80.2 (49.7, 115.2) |
| Chad | 1214 (967, 1523) | 40.6 (32.3, 50.9) | 4059 (3390, 4911) | 71.7 (60.1, 86.5) | 76.4 (41.1, 128.6) |
| Côte d'Ivoire | 1972 (1658, 2288) | 43.3 (36.8, 50) | 6333 (5053, 7719) | 57.5 (46.2, 69.5) | 32.7 (0.7, 67.7) |
| The Gambia | 169 (139, 204) | 43.3 (36, 51.9) | 635 (507, 772) | 66 (52.5, 80.2) | 52.3 (16.9, 92.9) |
| Ghana | 7911 (6546, 9427) | 115.4 (96, 136.1) | 28852 (24346, 34101) | 178.2 (150.3, 210.4) | 54.4 (22.7, 94.1) |
| Guinea | 1558 (1394, 1747) | 44.4 (39.8, 49.7) | 3493 (2743, 4539) | 63.4 (49.7, 82.6) | 42.9 (9, 90.3) |
| Guinea-Bissau | 306 (207, 393) | 69.3 (47.9, 88.4) | 825 (564, 1084) | 109.2 (76.4, 141.3) | 57.6 (21.7, 94.9) |
| Liberia | 650 (520, 836) | 54.2 (43.4, 69.6) | 1642 (1225, 2137) | 81 (60.6, 104.5) | 49.5 (17.7, 89.7) |
| Mali | 2433 (2131, 2777) | 54.9 (48.4, 62.1) | 5929 (4714, 7400) | 67 (53.6, 83.1) | 22.1 (-4.5, 61.7) |
| Mauritania | 757 (649, 893) | 70.2 (60.4, 83.3) | 2239 (1796, 2719) | 109.1 (87.7, 131.8) | 55.3 (20.4, 103.3) |
| Niger | 1333 (1069, 1692) | 42.5 (34.2, 53.7) | 4663 (3616, 5951) | 59.7 (46.6, 75.8) | 40.5 (12.7, 80.5) |
| Nigeria | 30710 (21500, 44290) | 66.4 (47, 95) | 73806 (51728, 106808) | 87.2 (61.8, 123.2) | 31.3 (-6.6, 91.1) |
| São Tomé and Príncipe | 21 (18, 24) | 29.7 (25.6, 34.6) | 56 (41, 79) | 52.1 (37.7, 72.6) | 75.5 (31.9, 132) |
| Senegal | 2053 (1780, 2348) | 59.2 (51.4, 67.7) | 7131 (6047, 8330) | 95.3 (80.9, 110.9) | 60.8 (29.8, 96.6) |
| Sierra Leone | 987 (783, 1193) | 48.3 (38.4, 58.2) | 2907 (2341, 3578) | 81.1 (65.5, 99.4) | 68.1 (24, 126.3) |
| Togo | 720 (613, 840) | 52.6 (44.9, 61.1) | 3181 (2485, 4005) | 85.9 (67.7, 107.3) | 63.3 (29.2, 101.6) |
| Eastern sub-Saharan Africa | 50450 (42593, 63075) | 60.9 (52.1, 75.4) | 117880 (104145, 131536) | 70.3 (62.2, 78.4) | 15.5 (-6.6, 45.9) |
| Burundi | 1734 (1224, 2243) | 71.1 (51.2, 90.8) | 2649 (2159, 3207) | 58.4 (47.8, 69.5) | -17.8 (-37.8, 14.8) |
| Comoros | 179 (150, 212) | 79 (66.6, 93.3) | 394 (315, 490) | 82.7 (66.4, 102.4) | 4.6 (-21.3, 37.9) |
| Djibouti | 142 (99, 190) | 80 (57.1, 105.7) | 627 (423, 895) | 100.5 (69.9, 140.9) | 25.7 (-12.5, 82) |
| Eritrea | 904 (671, 1156) | 80.4 (63.1, 100.2) | 2563 (1794, 3390) | 98.9 (71.6, 125.8) | 23 (-9.6, 78.8) |
| Ethiopia | 14254 (8707, 24096) | 66.7 (42.5, 110.6) | 26039 (20108, 31972) | 63.7 (49.3, 78.1) | -4.5 (-35.4, 62.4) |
| Kenya | 4922 (3781, 5831) | 53.4 (41.1, 63.1) | 17853 (14439, 21357) | 76.3 (61.7, 91.3) | 42.9 (24.8, 60.5) |
| Madagascar | 3359 (2915, 3882) | 57.8 (50.6, 66.5) | 6826 (5502, 8416) | 58.1 (47.1, 70.9) | 0.5 (-19.6, 28.7) |
| Malawi | 2046 (1303, 2538) | 47.8 (31.4, 58.6) | 4436 (3768, 5222) | 58.2 (49.4, 68.5) | 21.7 (-4.3, 90.1) |
| Mozambique | 3003 (2611, 3411) | 46.3 (40.4, 52.2) | 7268 (5668, 9132) | 63.8 (50.3, 79.9) | 37.9 (3.4, 87.8) |
| Rwanda | 2357 (1800, 3021) | 72.8 (56.5, 92.5) | 4329 (3545, 5391) | 70.5 (58.2, 87.7) | -3.2 (-30.9, 47.1) |
| Somalia | 1864 (1041, 2825) | 63.1 (38.9, 91.7) | 5024 (3551, 6852) | 71.6 (51, 96.5) | 13.5 (-22.9, 85.5) |
| South Sudan | 1843 (1100, 2935) | 70.3 (44.2, 108.9) | 3178 (2235, 4557) | 76.7 (54.3, 108.7) | 9.1 (-25.4, 69.7) |
| Tanzania | 7629 (5804, 9130) | 63.2 (49.1, 75.3) | 19211 (15557, 24494) | 75.3 (61.5, 95.5) | 19.2 (-5.8, 59.7) |

| | | | | | |
|-----------------------------------|-------------------------|------------------------|-------------------------|-------------------------|-----------------------|
| Uganda | 3190 (2682, 3820) | 44.6 (37.9, 52.9) | 10723 (8956, 12764) | 73.5 (61.7, 86.8) | 64.7 (30.1, 102.3) |
| Zambia | 2999 (2355, 3561) | 92.7 (74.6, 108.5) | 6687 (5320, 7934) | 96.4 (76.9, 113.9) | 3.9 (-14.8, 28.6) |
| Central sub-Saharan Africa | 16851 (14138, 19979) | 67.3 (57.9, 79) | 39484 (34052, 44641) | 72.3 (62.4, 82.1) | 7.5 (-12.9, 30.1) |
| Angola | 3284 (2345, 4559) | 74.1 (55.5, 101.1) | 10736 (8785, 13238) | 92.2 (75.8, 112.3) | 24.3 (-6.4, 70.1) |
| Central African Republic | 974 (648, 1432) | 74.7 (52.2, 108) | 1788 (1174, 2387) | 75.4 (52.7, 98.3) | 0.9 (-21.3, 30.2) |
| Congo | 1156 (853, 1479) | 97.9 (74.8, 122.1) | 2993 (2103, 4091) | 112.5 (81.2, 146.5) | 15 (-19.8, 57.2) |
| DR Congo | 10676 (8791, 12836) | 61.5 (50.9, 73.6) | 21939 (17473, 26767) | 60.4 (48.4, 74.4) | -1.8 (-24.7, 26) |
| Equatorial Guinea | 161 (98, 254) | 74.8 (48.4, 116.5) | 620 (410, 910) | 126.5 (85.5, 180.1) | 69.2 (5.1, 175.4) |
| Gabon | 600 (477, 798) | 100.5 (81.4, 132.8) | 1407 (1101, 1697) | 128.2 (101.5, 153.2) | 27.6 (-6.1, 64.2) |