

## Appendix PDF

### Table of Contents:

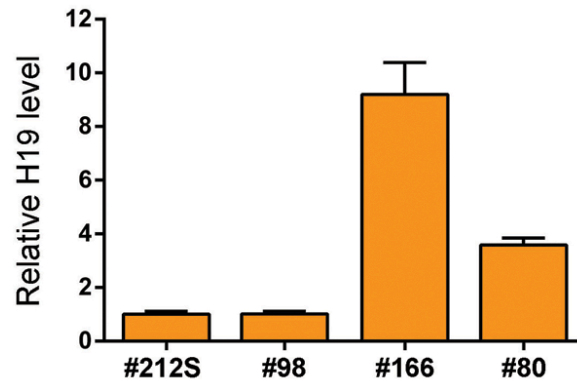
1. Appendix Table S1
2. Appendix Table S2
3. Appendix Figure S1
4. Appendix Figure S2
5. Appendix Figure S3

**Appendix Table S1.** Clinical data of patient samples with *in vivo* H19 and Igflr expression levels shown

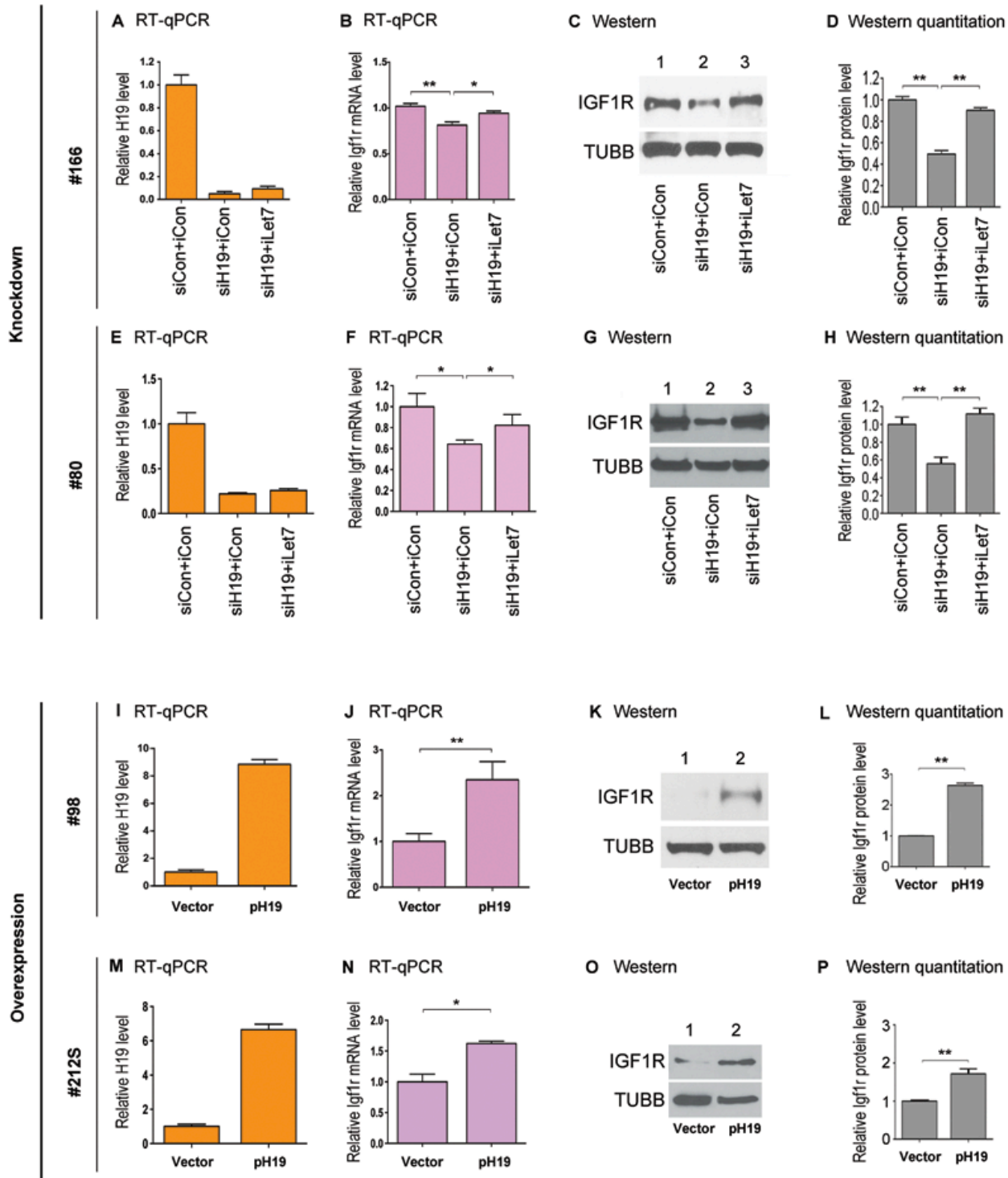
		Patient Code	Age	BMI	Hormonal treatment	H19	Igflr
<b><i>Ctl</i></b> (Non-endometriosis)	1	Eu413	27	23.0	No	3	2.14
	2	Eu507	19	19.1	No	9.04	2.35
	3	Eu530	28	25.9	No	13.06	1.21
	4	Eu531	24	19.1	No	18.89	0.54
	5	Eu548	19	22.4	No	18.55	1.51
	6	Eu555	33	23.2	No	7.16	2.82
	7	Eu559	35	26.6	No	2.33	0.66
	8	Eu603	35	18.9	No	1.83	1
	9	Eu473	35	22.0	No	10.93	0.41
	10	Eu634	35	26.9	No	1.6	0.58
		Mean ± SEM	29.00 ± 2.08	22.71 ± 0.97		8.64 ± 2.10	1.32 ± 0.27
<b><i>Endo</i></b> (Endometriosis)	1	Eu20	30	21.9	No	3.31	0.52
	2	Eu57	28	20.2	No	2.94	0.4
	3	Eu139	26	33.1	No	1.72	1.07
	4	Eu417	28	20.1	No	0.91	0.35
	5	Eu452	26	28.4	No	2	0.38
	6	Eu541	24	16.3	No	3.27	1.36
	7	Eu674	30	23.2	No	4.16	1.91
	8	Eu209	27	28.7	No	1.86	0.2
	9	Eu463	22	25.5	No	1.06	1.14
	10	Eu604	31	23.8	No	1.93	0.38
		Mean ± SEM	27.20 ± 0.89	24.12 ± 1.57		2.31 ± 0.33	0.77 ± 0.18

**Appendix Table S2.** Real-time PCR primers

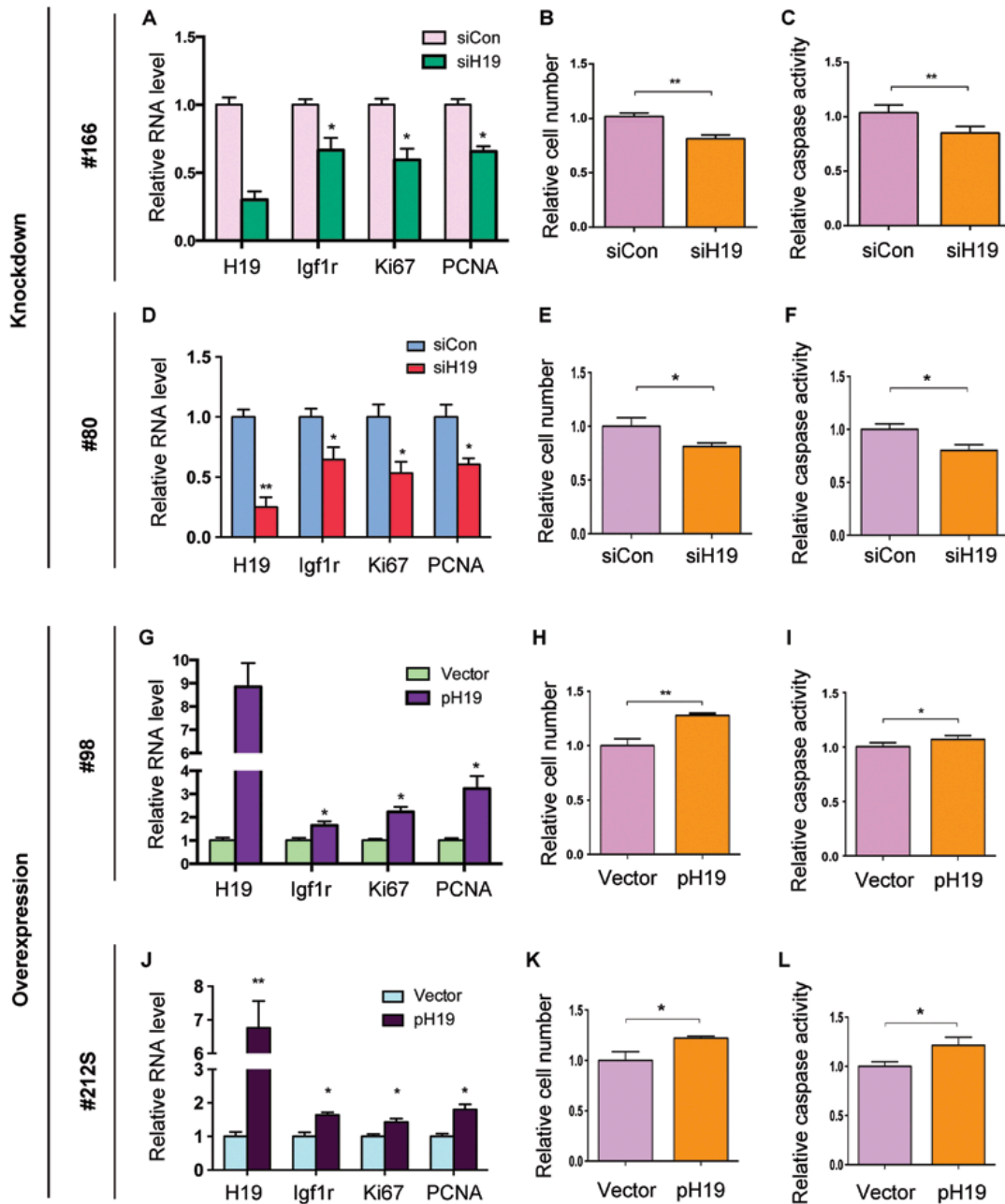
Gene	Forward primer	Reverse primer
$\beta$ Tubulin	5'-CGTGTTCGGCCAGAGTGGTGC	5'-GGGTGAGGGCATGACGCTGAA
Gapdh	5'-TGCACCACCAACTGCTTAGC	5'-GGCATGGACTGTGGTCATGAG
Actin $\beta$	5'-CTGGAACGGTGAAGGTGACA	5'-AAGGGACTTCCTGTAACAATGCA
YWHAZ	5'-ACTTTTGGTACATTGTGGCTTCAA	5'-CGCCAGGACAAACCAGTAT
RPL13A	5'-CCTGGAGGAGAAGAGGAAAGAGA	5'-TTGAGGACCTCTGTGTATTTGTCAA
SDHA	5'-TGGGAACAAGAGGGCATCTG	5'-CCACCACTGCATCAAATTCATG
HPRT1	5'-TGACACTGGCAAAACAATGCA	5'-GGTCCTTTTCACCAGCAAGCT
$\beta$ 2M	5'-TGCTGTCTCCATGTTTGATGTATCT	5'-GGCATGGACTGTGGTCATGAG
H19	5'-ACTCAGGAATCGGCTCTGGAA	5'-CTGCTGTTCCGATGGTGTCTT
Igflr	5'-GCACCATCTTCAAGGGCAATTTG	5'-AGGAAGGACAAGGAGACCAAGG
Igfl	5'-GCGTTTTCCCCCAATGAAAT	5'-GGTGCAAATCACTCCTAAAGACAA
Igf2	5'-CCGAAACAGGCTACTCTCCT	5'-AGGGTGTTTAAAGCCAATCG
Insr	5'-CAGCTGAGCTAGAAGCCAAC	5'-TGAGTGATGGTGAGGTTGTG
Ki67	5'-TTGGAGAATGACTCGTGAGC	5'-CGAAGCTTTCAATGACAGGA
PCNA	5'-CCTTGCGCTAGTATTTGAA	5'-TTTCCAAGTTCTCCTACTGC



**Appendix Figure S1. H19 is expressed in primary human endometrial stromal cells.** RNAs were isolated from primarily cultured endometrial stromal cells derived from eutopic endometrial biopsies. Relative H19 levels as assessed by RT-qPCR from four patients with endometriosis are shown, with the level of #212S arbitrarily set as 1. #212S, #98, #166, and #80 are patient ID numbers.



**Appendix Figure S2. Results from four individual patient cells, related to Figure 2.** (A-H) Endometrial stromal cells #166 and #80 were each transfected with the indicated mixture. (I-P) Endometrial stromal cells #98 and #212S were each transfected with vector or pH19. Results from three independent transfection experiments with each of the four cells are shown. Numbers are mean  $\pm$  SD (n=3). \*,  $p < 0.05$ ; \*\*,  $p < 0.01$ .



**Appendix Figure S3. Results from four individual patient cells, related to Figure 3.** (A-F) Endometrial stromal cells #166 and #80 were each transfected with the indicated mixture. (G-L) Endometrial stromal cells #98 and #212S were each transfected with vector or pH19. Results from three independent transfection experiments with each of the four cells are shown. Numbers are mean  $\pm$  SD (n=3). \*,  $p < 0.05$ ; \*\*,  $p < 0.01$ .