

# THE LANCET

## Gastroenterology & Hepatology

### Supplementary appendix

This appendix formed part of the original submission and has been peer reviewed. We post it as supplied by the authors.

Supplement to: GBD 2017 Inflammatory Bowel Disease Collaborators. The global, regional, and national burden of inflammatory bowel disease in 195 countries and territories, 1990–2017: a systematic analysis for the Global Burden of Disease Study 2017. *Lancet Gastroenterol Hepatol* 2019; published online Oct 21. [http://dx.doi.org/10.1016/S2468-1253\(19\)30333-4](http://dx.doi.org/10.1016/S2468-1253(19)30333-4).

## Supplementary appendix

Supplement to: **Global, regional, and national burden of inflammatory bowel disease in 195 countries and territories, 1990–2017: a systematic analysis for the Global Burden of Disease Study 2017**

### Contents:

#### Appendix Figures

Appendix figure 1: Age patterns by sex in 2017 of the total number of deaths and age-specific death rates of IBD at the global level

Appendix figure 2: Age patterns by sex in 2017 of the total number and age-specific YLDs rates of IBD at the global level. IBD=inflammatory bowel disease. YLDs=years lived with disability.

Appendix figure 3: Age patterns by sex in 2017 of the total number and age-specific YLLs rates of IBD at the global level. IBD=inflammatory bowel disease. YLLs=years of life lost.

Appendix Figure 4: Trends from 1990 to 2017 for number and age-standardised DALY rates of IBD at the global level. IBD=inflammatory bowel disease. DALYs=disability-adjusted life-years.

Appendix figure 5: Age patterns by sex in 2017 for number and age-standardised DALYs rates of IBD at the global level. IBD=inflammatory bowel disease. DALYs=disability-adjusted life-years.

Appendix figure 6: Trends from 1990 to 2017 for age-standardised prevalence rate of IBD across Global Burden of Disease super-regions. IBD=inflammatory bowel disease.

Appendix Figure 7: Trends from 1990 to 2017 for age-standardised DALY rates of IBD across Global Burden of Disease super-regions. IBD=inflammatory bowel disease. DALYs=disability-adjusted life-years.

Appendix figure 8: Trends from 1990 to 2017 in number of prevalent cases of IBD for both sexes, across 21 regions. IBD=inflammatory bowel disease.

Appendix Figure 9: Age-standardised prevalence rates of IBD by sex, across 21 regions, in 2017. IBD=inflammatory bowel disease.

Appendix figure 10: Percentage change in age-standardised prevalence rates of IBD by sex, across 21 regions, from 1990 to 2017. IBD=inflammatory bowel disease.

Appendix figure 11: Age-standardised death rates from IBD by sex, across 21 regions, in 2017. IBD=inflammatory bowel disease.

Appendix figure 12: Percentage change in age-standardised death rates from IBD by sex, across 21 regions, from 1990 to 2017. IBD=inflammatory bowel disease.

Appendix Figure 13: Age-standardised DALYs rates from IBD by sex, across 21 regions, in 2017. IBD=inflammatory bowel disease. DALYs=disability-adjusted life-years.

Appendix Figure 14: Trend from 1990 to 2017 in number of DALYs from IBD for both sexes, across 21 regions. IBD=inflammatory bowel disease. DALYs=disability-adjusted life-years.

Appendix figure 15: Age-standardised death rates (per 100 000) from IBD for both sexes 2017 at the country level. IBD=inflammatory bowel disease.

Appendix figure 16: Percentage change in age-standardised death rates (per 100 000), from IBD for both sexes, at the country level, from 1990 to 2017. IBD=inflammatory bowel disease.

Appendix figure 17: Age-standardised DALYs rates (per 100 000), from IBD for both sexes 2017 at the country level. IBD=inflammatory bowel disease. DALYs=disability-adjusted life-years.

Appendix figure 18: Percentage change in age-standardised DALY rates (per 100 000), from IBD for both sexes, at the country level, from 1990 to 2017. IBD=inflammatory bowel disease. DALYs=disability-adjusted life-years.

### **Appendix Tables**

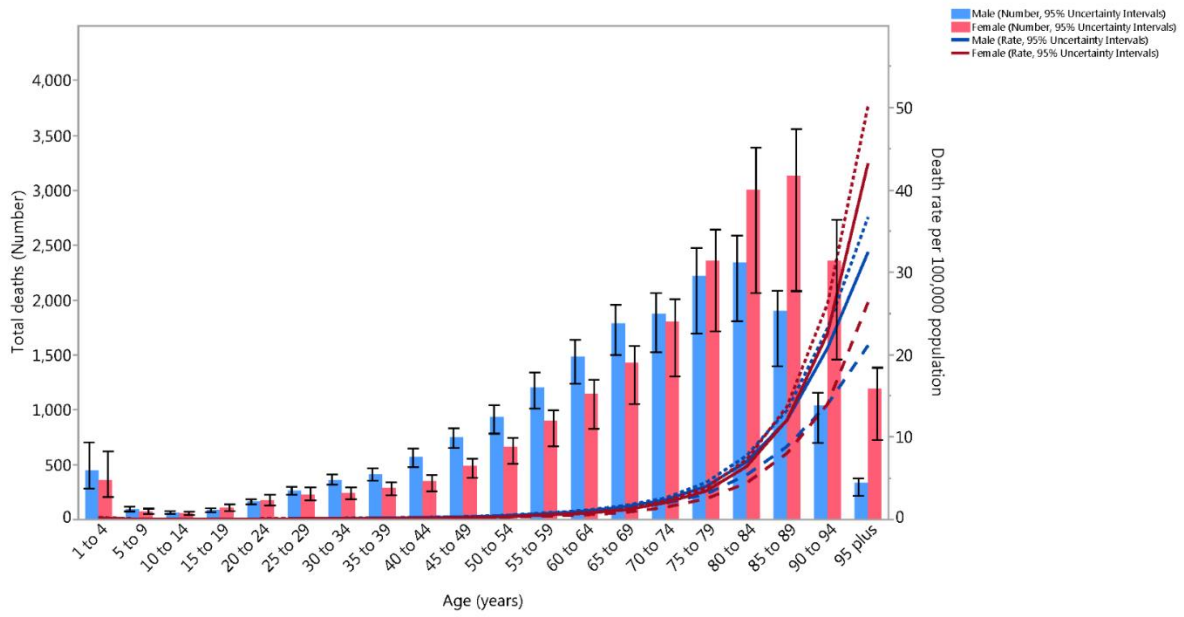
Appendix Table 1: Data points by site for IBD. IBD=inflammatory bowel disease.

Appendix table 2: IBD prevalence in 1990 and 2017 for both sexes and percentage change in age-standardised rates by location

Appendix Table 3: Deaths due to IBD in 1990 and 2017 for both sexes, and percentage change in age-standardised rates by location. IBD=inflammatory bowel disease.

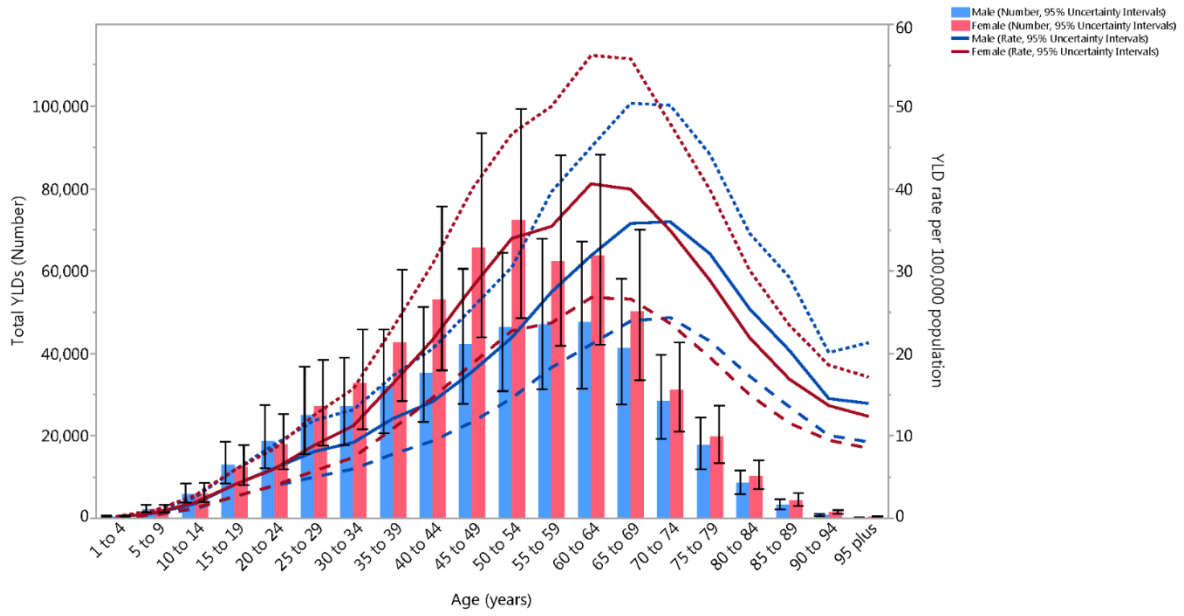
Appendix Table 4: DALYs due to IBD in 1990 and 2017 for both sexes, and percentage change of age-standardised rates by location. IBD=inflammatory bowel disease. DALYs=disability-adjusted life-years.

**Appendix figure 1: Age patterns by sex in 2017 of the total number of deaths and age-specific death rates of IBD at the global level**



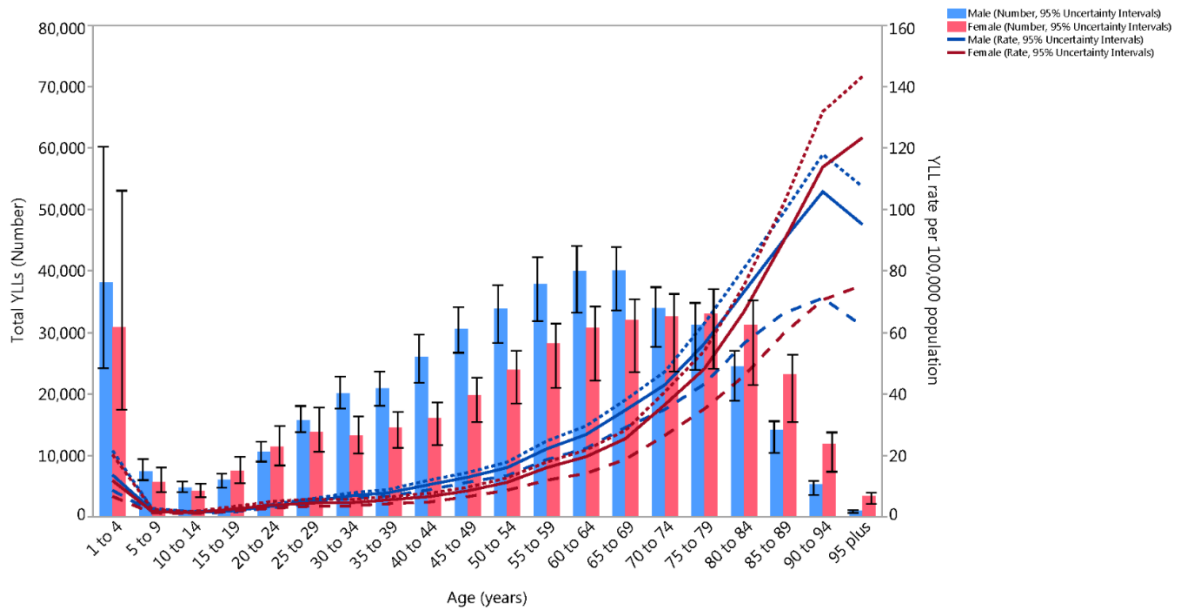
Dotted and dashed lines indicate 95% upper and lower uncertainty intervals, respectively. IBD=inflammatory bowel disease.

**Appendix figure 2: Age patterns by sex in 2017 of the total number and age-specific YLDs rates of IBD at the global level**



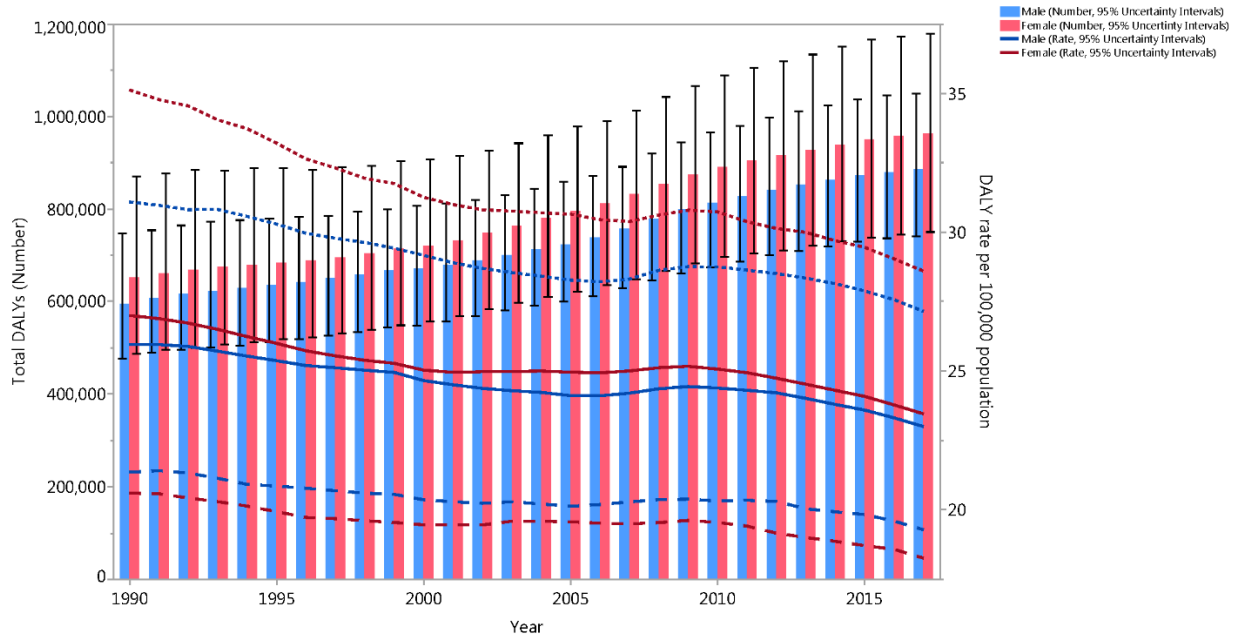
Dotted and dashed lines indicate 95% upper and lower uncertainty intervals, respectively. IBD=inflammatory bowel disease. YLDs=years lived with disability.

**Appendix figure 3: Age patterns by sex in 2017 of the total number and age-specific YLLs rates of IBD at the global level**



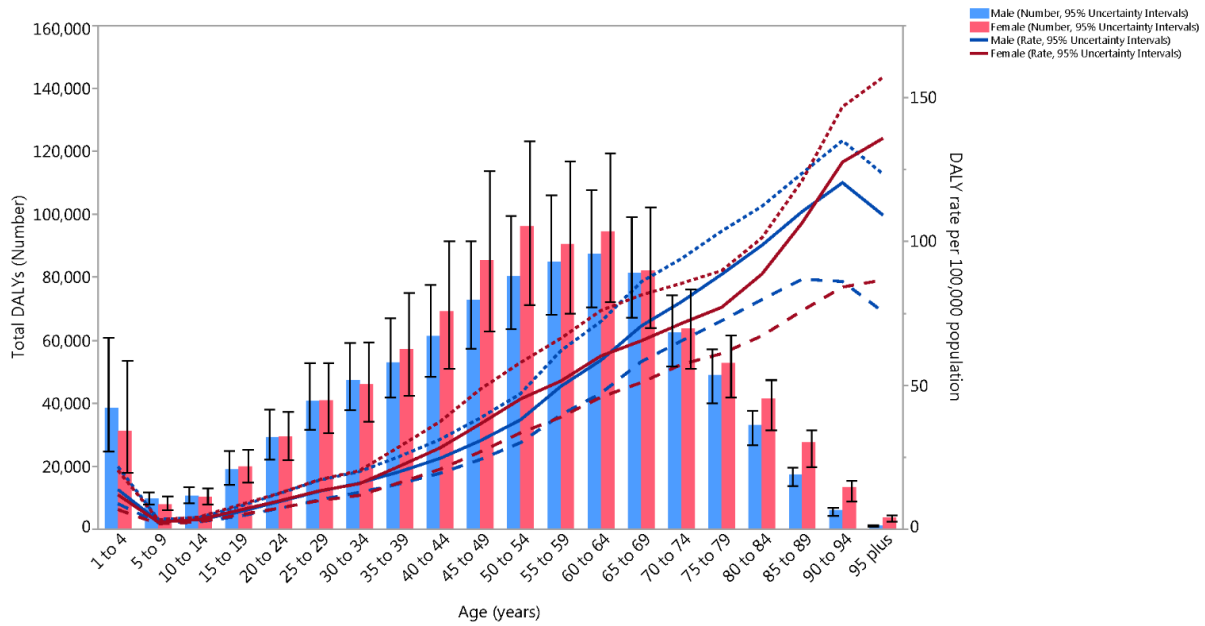
Dotted and dashed lines indicate 95% upper and lower uncertainty intervals, respectively. IBD=inflammatory bowel disease. YLLs=years of life lost.

**Appendix figure 4: Trends from 1990 to 2017 for number and age-standardised DALY rates of IBD at the global level**



Dotted and dashed lines indicate 95% upper and lower uncertainty intervals, respectively. IBD=inflammatory bowel disease. DALYs=disability-adjusted life-years.

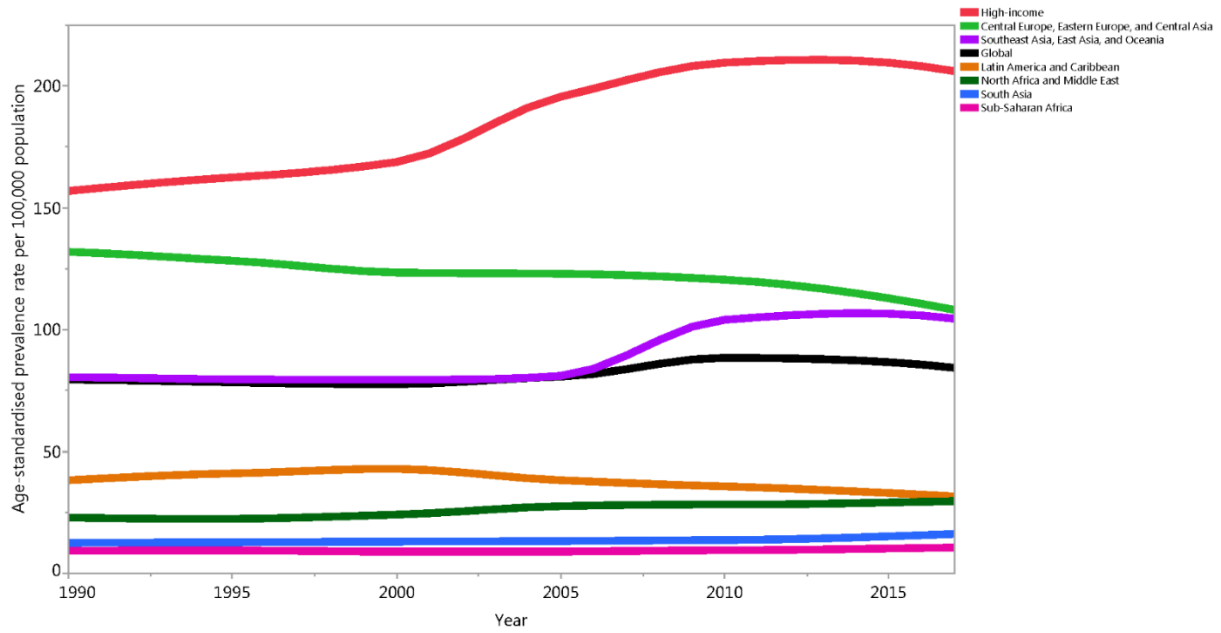
**Appendix figure 5: Age patterns by sex in 2017 for number and age-standardised DALYs rates of IBD at the global level**



Dotted and dashed lines indicate 95% upper and lower uncertainty intervals, respectively. IBD=inflammatory bowel disease. DALYs=disability-adjusted life-years.

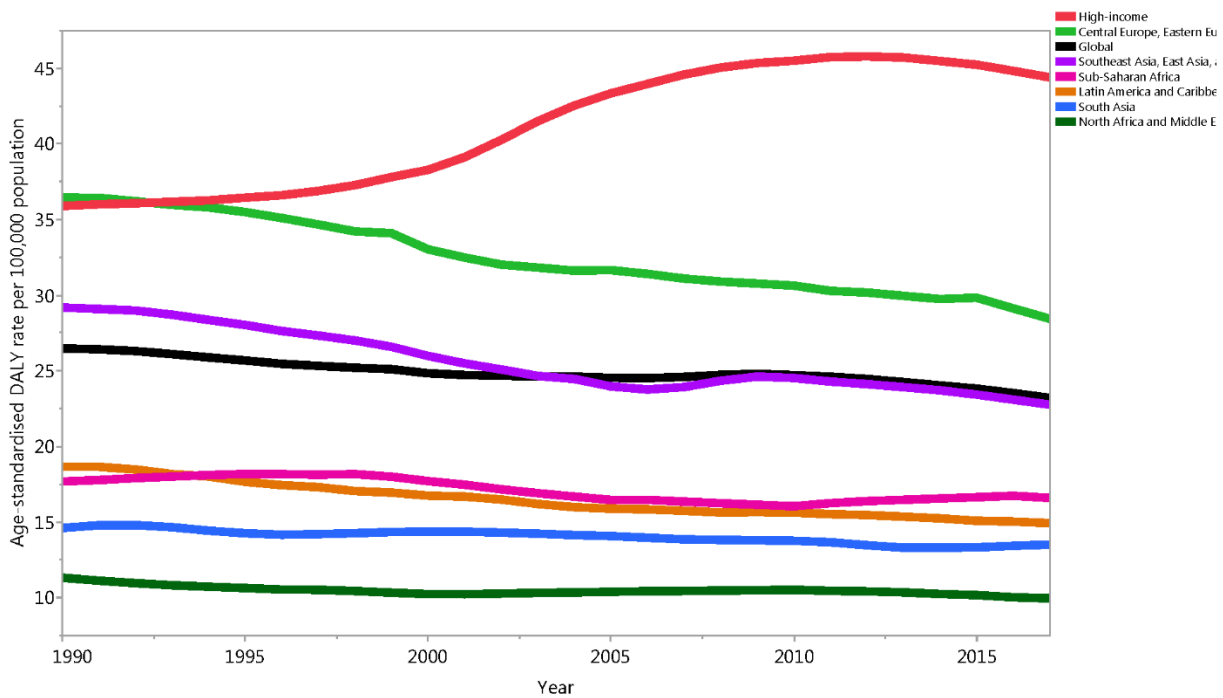


**Appendix figure 6: Trends from 1990 to 2017 for age-standardised prevalence rate of IBD across Global Burden of Disease super-regions**



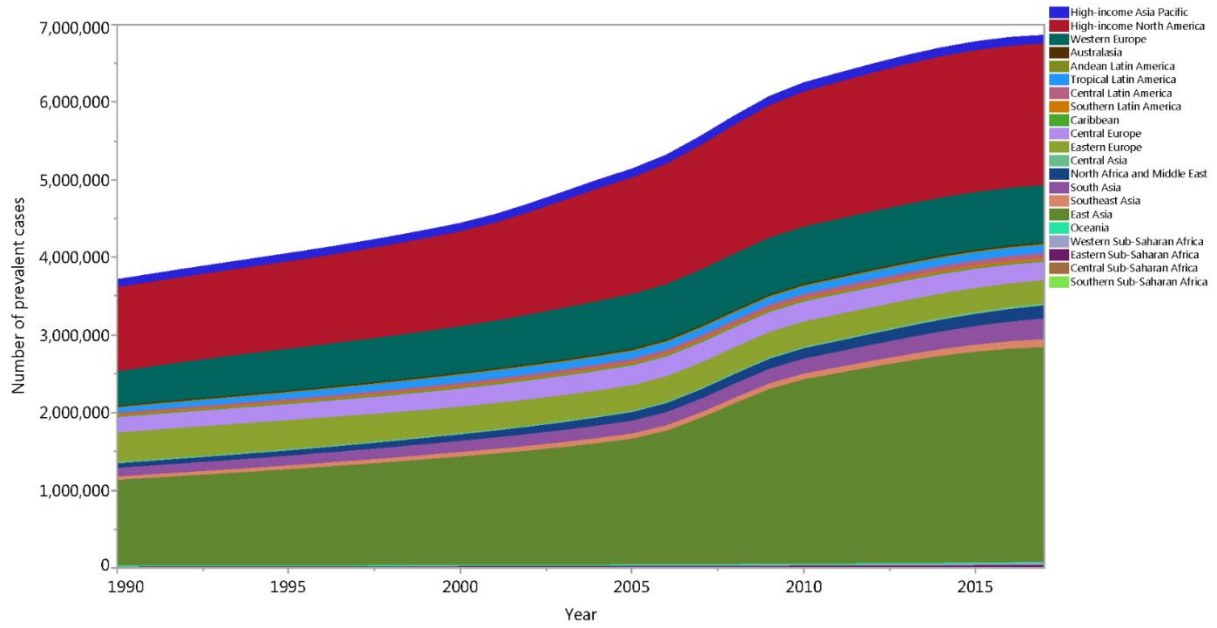
IBD=inflammatory bowel disease.

**Appendix Figure 7: Trends from 1990 to 2017 for age-standardised DALY rates of IBD across Global Burden of Disease super-regions**



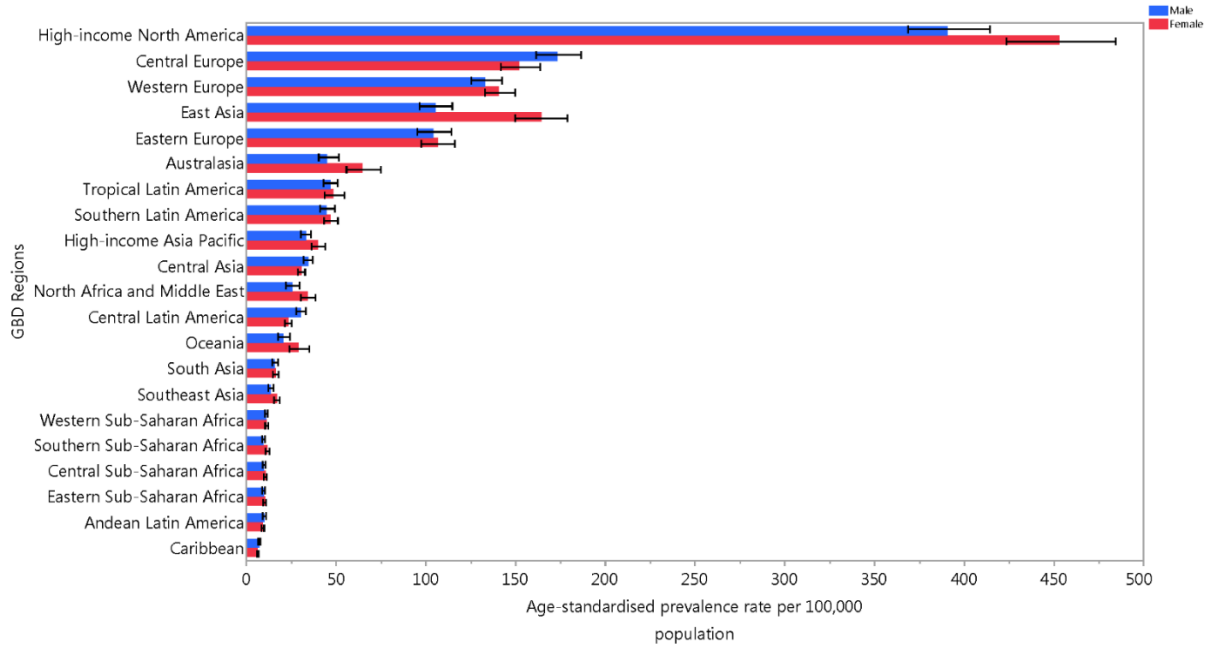
IBD= inflammatory bowel disease. DALYs=disability-adjusted life-years.

**Appendix figure 8: Trends from 1990 to 2017 in number of prevalent cases of IBD for both sexes, across 21 regions**



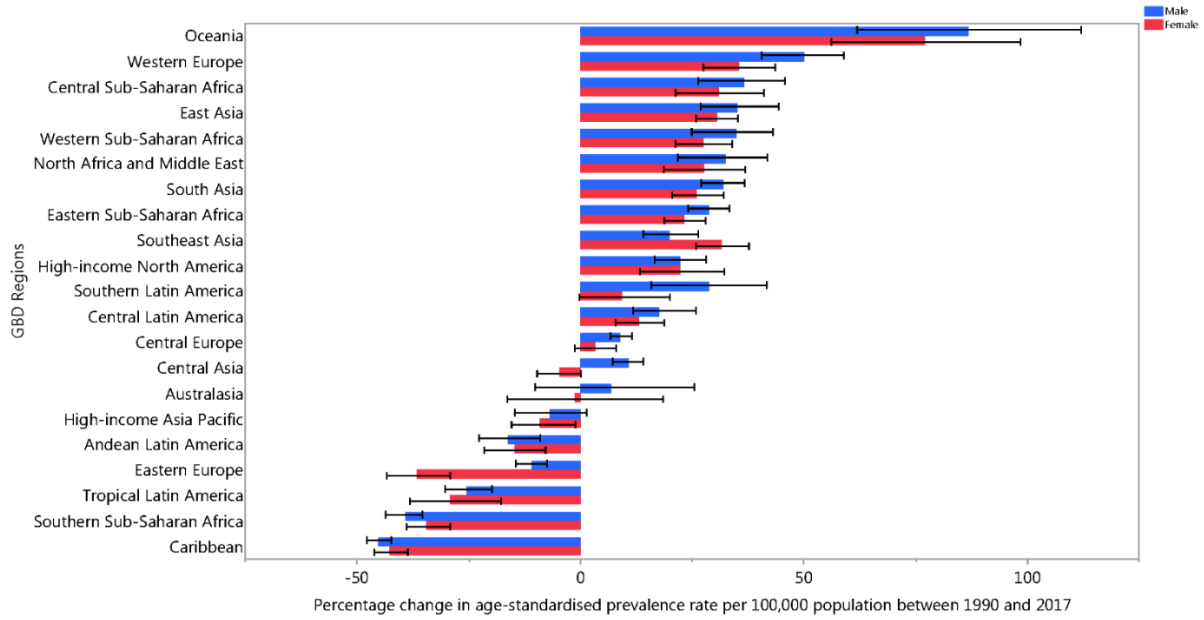
IBD=inflammatory bowel disease.

**Appendix Figure 9: Age-standardised prevalence rates of IBD by sex, across 21 regions, in 2017**



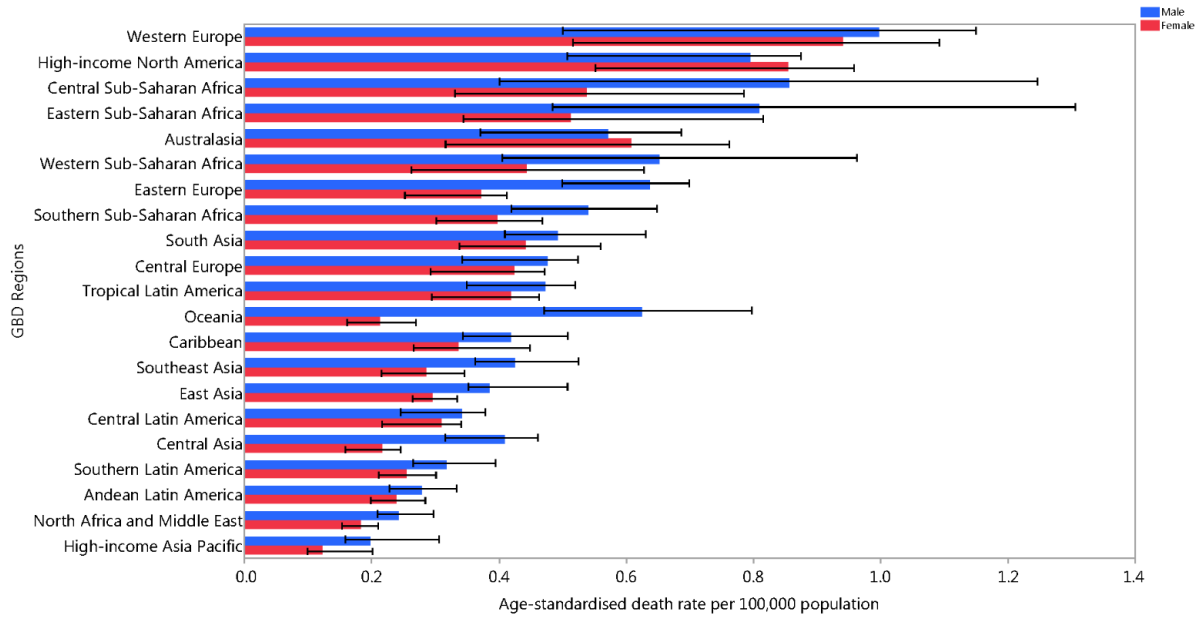
IBD=inflammatory bowel disease.

**Appendix figure 10: Percentage change in age-standardised prevalence rates of IBD by sex, across 21 regions, from 1990 to 2017**



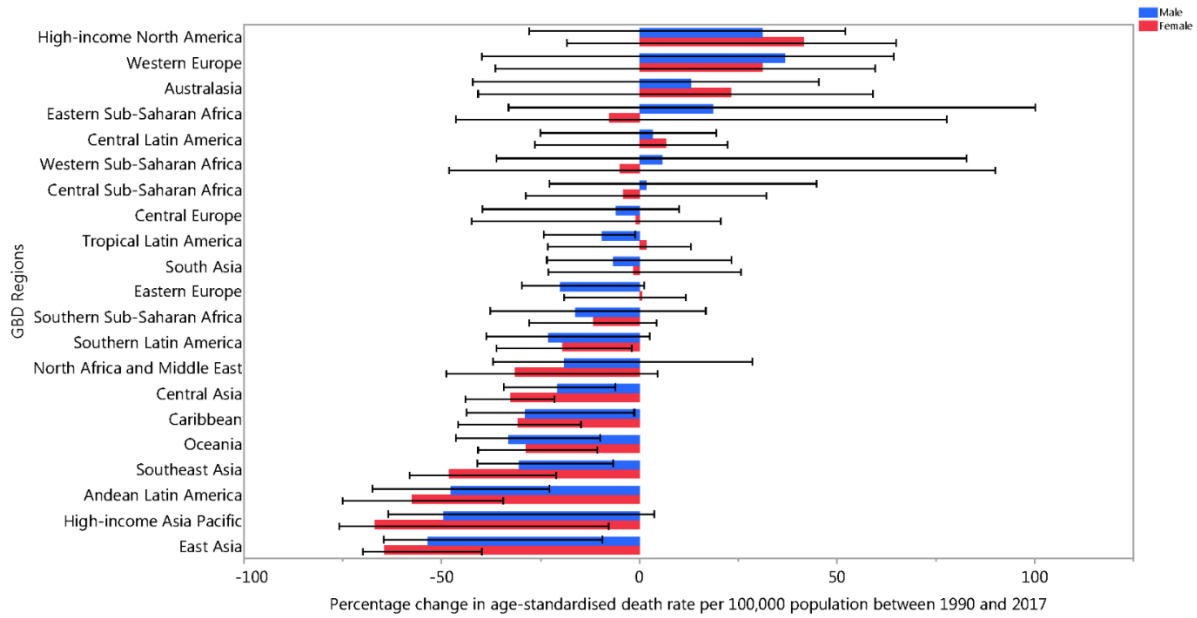
IBD=inflammatory bowel disease.

**Figure 11: Age-standardised death rates from IBD by sex, across 21 GBD regions, in 2017**



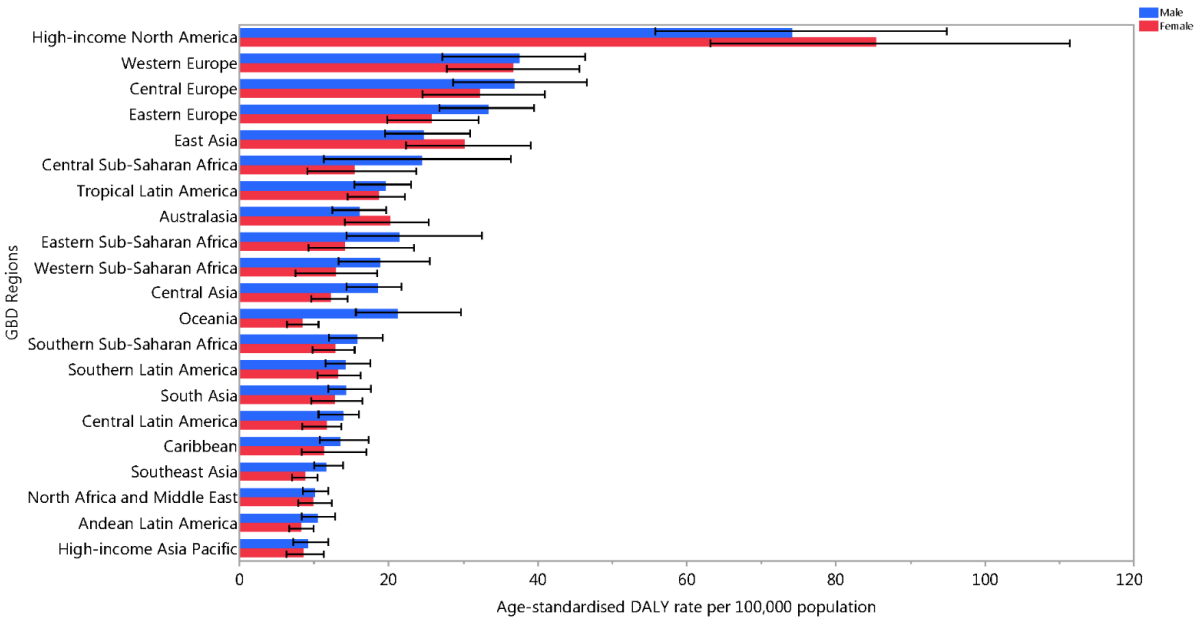
IBD=inflammatory bowel disease.

**Appendix figure 12: Percentage change in age-standardised death rates from IBD by sex, across 21 GBD regions, from 1990 to 2017**



IBD=inflammatory bowel disease.

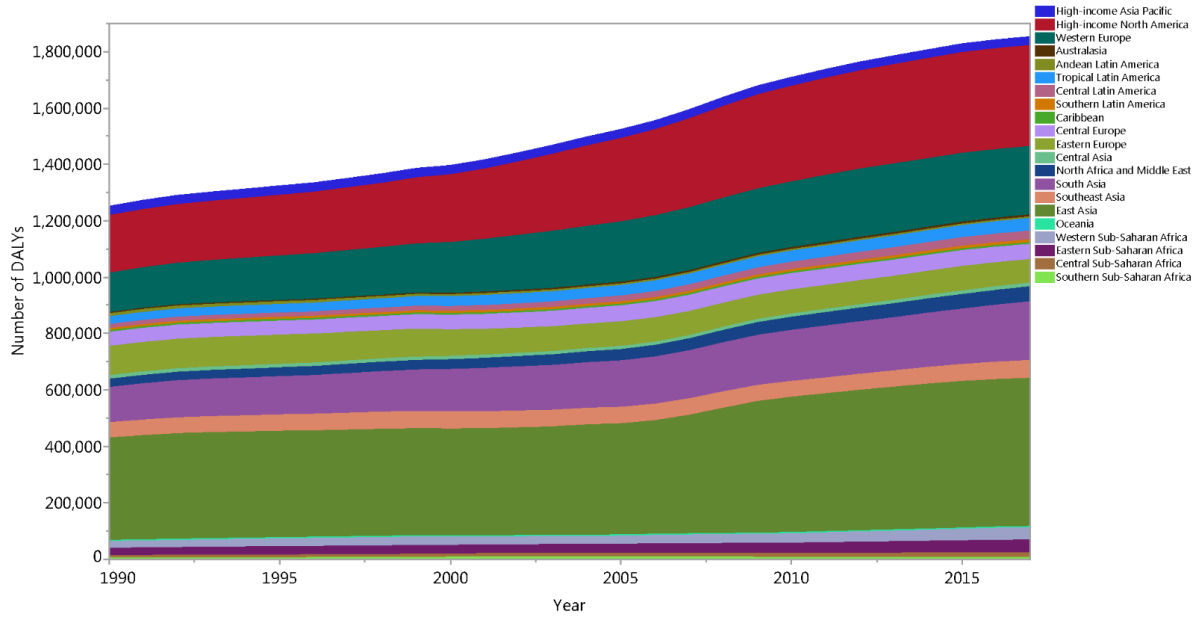
**Appendix Figure 13: Age-standardised DALYs rates from IBD by sex, across 21 GBD regions, in 2017**



IBD=inflammatory bowel disease. DALYs=disability-adjusted life-years.



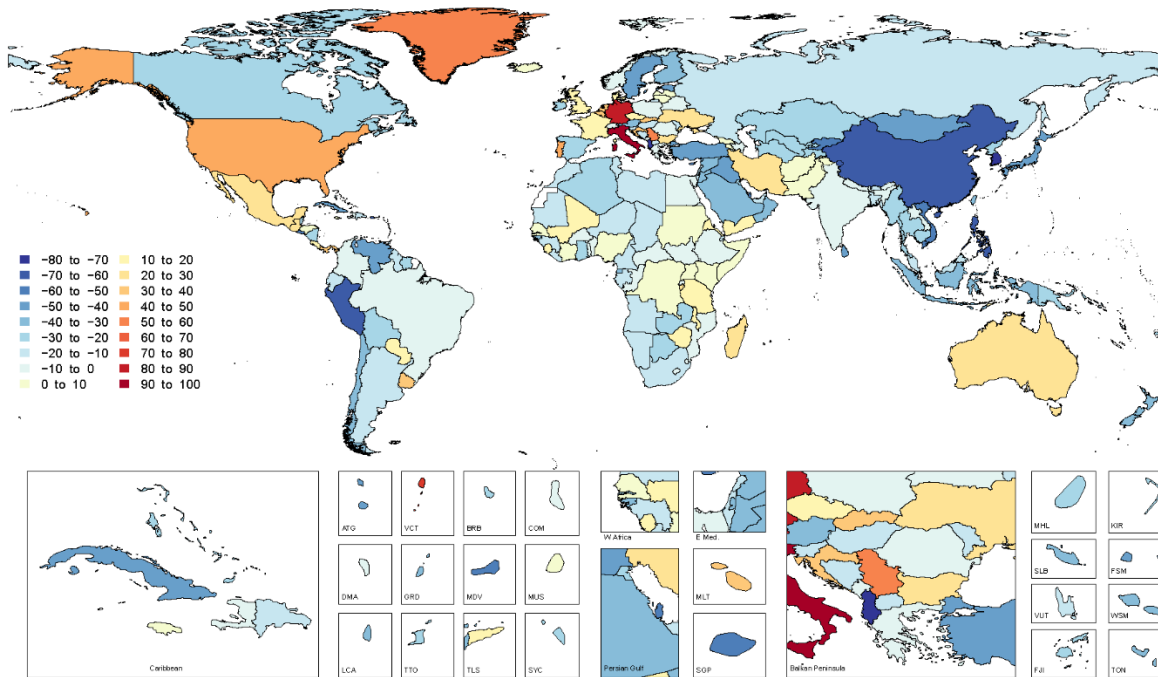
**Appendix Figure 14: Trend from 1990 to 2017 in number of DALYs from IBD for both sexes, across 21 regions**



IBD=inflammatory bowel disease. DALYs=disability-adjusted life-years.

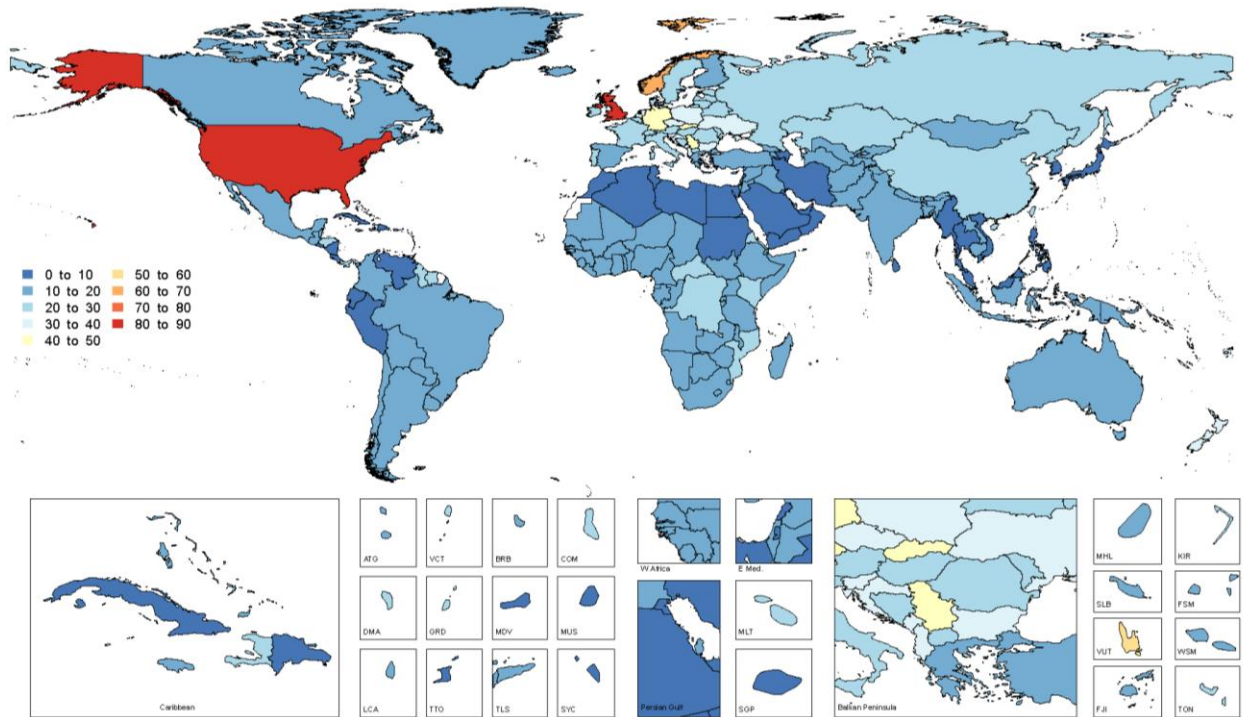


**Appendix figure 16: Percentage change in age-standardised death rates (per 100 000) from IBD for both sexes, at the country level, from 1990 to 2017**



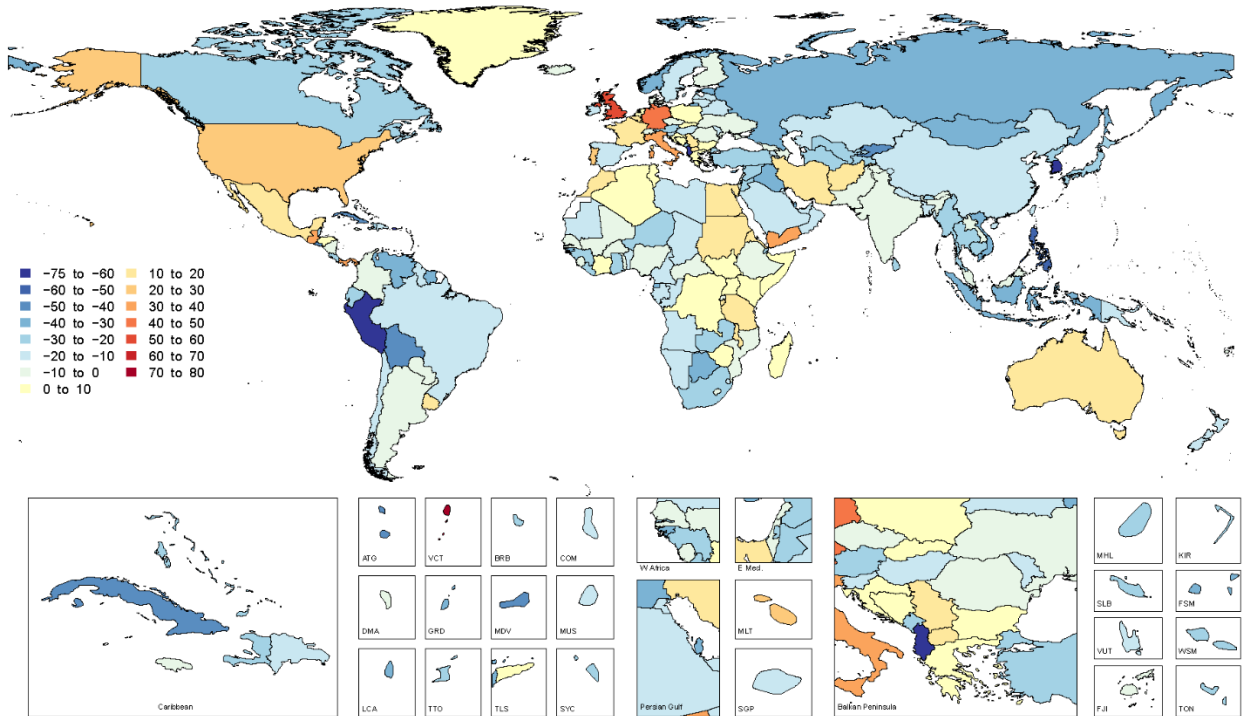
IBD=inflammatory bowel disease. ATG=Antigua and Barbuda, VCT=Saint Vincent and the Grenadines, BRB=Barbados, COM=Comoros, DMA=Dominica, GRD=Grenada, MDV=Maldives, MUS=Mauritius, LCA=Saint Lucia, TTO=Trinidad and Tobago, TLS=Timor-Leste, SYC=Seychelles, MLT=Malta, SGP=Singapore, MHL=Marshall Islands, KIR=Kiribati, SLB=Solomon Islands, FSM=Federated States of Micronesia, VUT=Vanuatu, WSM=Samoa, FJI=Fiji, TON=Tonga.

**Appendix figure 17: Age-standardised DALYs rates (per 100 000) from IBD for both sexes 2017 at the country level**



IBD=inflammatory bowel disease. DALYs=disability-adjusted life-years. ATG=Antigua and Barbuda, VCT=Saint Vincent and the Grenadines, BRB=Barbados, COM=Comoros, DMA=Dominica, GRD=Grenada, MDV=Maldives, MUS=Mauritius, LCA=Saint Lucia, TTO=Trinidad and Tobago, TLS=Timor-Leste, SYC=Seychelles, SGP=Singapore, MHL=Marshall Islands, KIR=Kiribati, SLB=Solomon Islands, FSM=Federated States of Micronesia, VUT=Vanuatu, WSM=Samoa, FJI=Fiji, TON=Tonga.

**Appendix figure 18: Percentage change in age-standardised DALY rates (per 100 000) from IBD for both sexes, at the country level, from 1990 to 2017**



IBD=inflammatory bowel disease. DALYs=disability-adjusted life-years. ATG=Antigua and Barbuda, VCT=Saint Vincent and the Grenadines, BRB=Barbados, COM=Comoros, DMA=Dominica, GRD=Grenada, MDV=Maldives, MUS=Mauritius, LCA=Saint Lucia, TTO=Trinidad and Tobago, TLS=Timor-Leste, SYC=Seychelles, MLT=Malta, SGP=Singapore, MHL=Marshall Islands, KIR=Kiribati, SLB=Solomon Islands, FSM=Federated States of Micronesia, VUT=Vanuatu, WSM=Samoa, FJI=Fiji, TON=Tonga.

**Appendix Table 1. Data points for ulcerative colitis and Crohn's disease**

**1a: Non-infective inflammatory bowel disease due to ulcerative colitis.**

	<b>Prevalence</b>	<b>Incidence</b>	<b>Case fatality</b>
<b>Site-years (total)</b>	1,241	282	3
<b>Number of countries with data</b>	51	52	2
<b>Number of GBD regions with data (out of 21)</b>	17	13	1
<b>Number of GBD super-regions with data (out of 7 super-regions)</b>	7	6	1

**1b: Non-infective inflammatory bowel disease due to Crohn's disease**

	<b>Prevalence</b>	<b>Incidence</b>	<b>Case fatality</b>
<b>Site-years (total)</b>	1,183	270	1
<b>Number of countries with data</b>	50	49	1
<b>Number of GBD regions with data (out of 21)</b>	17	12	1
<b>Number of GBD super-regions with data (out of 7 super-regions)</b>	7	5	1

**Appendix table 2: IBD prevalence in 1990 and 2017 for both sexes and percentage change in age-standardised rates by location**

	1990		2017		Percentage change in age-standardized rates between 1990 and 2017
	Counts (95% UI)	Rate (95% UI)	Counts (95% UI)	Rate (95% UI)	
<b>Global</b>	3699934 (3536764, 3888255)	79.5 (75.9, 83.5)	6848872 (6421390, 7304419)	84.3 (79.2, 89.9)	6.1 (3.3, 8.6)
<b>High-income North America</b>	1085638 (1044639, 1132603)	344.8 (331.7, 359.3)	1824322 (1727288, 1921648)	422.0 (398.7, 446.1)	22.4 (16.3, 28.7)
<b>Canada</b>	17538 (16014, 19554)	57.1 (52.3, 63.4)	20360 (18722, 22566)	46.6 (42.8, 51.9)	-18.4 (-26.9, -9.1)
<b>Greenland</b>	29 (26, 32)	54.1 (48.9, 60.5)	32 (28, 38)	47.8 (42.5, 56.1)	-11.6 (-23.6, 4.3)
<b>USA</b>	1068048 (1027131, 1114359)	376.1 (362.0, 392.0)	1803898 (1707622, 1900996)	464.5 (438.6, 490.9)	23.5 (17.2, 29.9)
<b>Australasia</b>	11920 (10861, 13095)	53.8 (48.9, 59.1)	18490 (16596, 20688)	54.9 (49.5, 61.0)	2.0 (-9.9, 16.0)
<b>Australia</b>	6638 (6067, 7426)	36.1 (33, 40.8)	10680 (9686, 12000)	37.9 (34.3, 43.2)	5.1 (-8.1, 19.2)
<b>New Zealand</b>	5282 (4412, 6250)	142.9 (120.4, 168.4)	7810 (6544, 9492)	148.2 (123.9, 178.9)	3.7 (-18.9, 29.2)
<b>High-income Asia-Pacific</b>	78971 (72854, 86056)	39.7 (36.7, 43.1)	89447 (82801, 96633)	36.4 (33.7, 39.3)	-8.2 (-13.4, -2.8)
<b>Brunei</b>	44 (37, 53)	19.6 (16.4, 23.1)	157 (125, 201)	34.3 (27.8, 43.3)	74.5 (43.8, 115.9)
<b>Japan</b>	67049 (61423, 73627)	44.4 (40.8, 48.5)	66300 (60739, 72594)	39.2 (35.9, 42.9)	-11.7 (-17.5, -5.8)
<b>Singapore</b>	869 (796, 953)	25.8 (23.6, 28.3)	2514 (2296, 2772)	36.9 (33.8, 40.5)	43.0 (30.9, 58.0)
<b>South Korea</b>	11009 (10199, 11874)	25.2 (23.4, 27.1)	20476 (18536, 22545)	30.3 (27.5, 34.0)	20.4 (10.3, 34.6)
<b>Western Europe</b>	441120 (419869, 464651)	95.9 (91.3, 101.1)	738083 (698523, 781879)	136.6 (129.6, 144.4)	42.5 (35.7, 48.9)
<b>Andorra</b>	97 (69, 136)	153.7 (109.0, 215.3)	127 (86, 189)	114.7 (79.6, 163.7)	-25.3 (-43.2, -2.0)
<b>Austria</b>	7022 (6075, 8295)	75.6 (65.7, 88.7)	9233 (7819, 11041)	83.6 (70.1, 101.2)	10.6 (-11.4, 36.4)
<b>Belgium</b>	9581 (8667, 10891)	79.0 (71.4, 89.0)	13464 (12321, 15286)	93.9 (86.4, 104.9)	18.9 (3.9, 34.4)
<b>Cyprus</b>	416 (370, 476)	50.7 (45.1, 57.8)	962 (873, 1078)	61.1 (55.6, 68.8)	20.5 (2.8, 38.5)
<b>Denmark</b>	3934 (3435, 4684)	63.9 (56.3, 75.7)	4479 (3904, 5343)	64.2 (56.4, 76.1)	0.5 (-16, 18.4)
<b>Finland</b>	5039 (4163, 6411)	84.0 (70.3, 106.0)	6345 (5140, 8648)	91.7 (75.3, 126.8)	9.2 (-18.9, 57.3)
<b>France</b>	40496 (36098, 47145)	61.0 (54.4, 69.8)	53375 (48654, 60318)	66.6 (60.3, 75.8)	9.3 (-6.0, 26.7)
<b>Germany</b>	62158 (55870, 71967)	63.2 (56.8, 73.2)	97652 (90233, 105262)	88.3 (81.7, 97.1)	39.8 (21.4, 55.7)
<b>Greece</b>	7120 (6585, 7795)	57.6 (53.1, 63.1)	9302 (8466, 10399)	68.7 (62.8, 76.4)	19.2 (7.9, 34.4)
<b>Iceland</b>	190 (172, 218)	71.6 (64.8, 82.9)	269 (241, 319)	66.8 (60.1, 78.7)	-6.6 (-19.9, 10.5)
<b>Ireland</b>	2550 (2284, 2988)	68.9 (61.9, 80.6)	4072 (3606, 4799)	71 (63.4, 82.9)	3.0 (-13.7, 21.6)
<b>Israel</b>	2796 (2434, 3293)	58.9 (51.1, 69.4)	6591 (6081, 7259)	70.9 (65.5, 77.7)	20.4 (1.9, 38.4)
<b>Italy</b>	56469 (51123, 65077)	80.9 (72.9, 94.4)	76581 (70764, 83027)	93.8 (86.8, 102.3)	16.0 (-0.2, 28.9)

<b>Luxembourg</b>	447 (410, 503)	94.7 (87.1, 106.4)	831 (756, 949)	110.9 (100.9, 125.7)	17.2 (4.0, 34.9)
<b>Malta</b>	219 (198, 255)	53.2 (48.1, 60.9)	373 (341, 425)	66.3 (60.7, 74.7)	24.5 (9.4, 40.8)
<b>Netherlands</b>	12524 (11237, 14369)	72.2 (64.9, 82.5)	14672 (12985, 17544)	69.6 (61.4, 85.9)	-3.6 (-18.3, 18.1)
<b>Norway</b>	20340 (16210, 25635)	409.5 (327.7, 511.9)	17791 (13584, 23505)	274.4 (213.1, 354.0)	-33.0 (-51.9, -8.4)
<b>Portugal</b>	4321 (3779, 5044)	36.2 (32.2, 42.1)	6657 (6007, 7682)	47.3 (42.7, 53.9)	30.5 (11.6, 51.2)
<b>Spain</b>	19834 (17001, 24403)	43.4 (37.4, 52.6)	29186 (26398, 32764)	48.7 (44.4, 54.4)	12.3 (-5.8, 32.2)
<b>Sweden</b>	10413 (9155, 12393)	99.1 (87.7, 115.7)	12231 (10520, 15016)	98.4 (85.4, 118.0)	-0.7 (-16.4, 20.5)
<b>Switzerland</b>	7764 (7208, 8548)	91.8 (85.4, 101.2)	10626 (9775, 12084)	94.8 (87.1, 109.2)	3.3 (-6.8, 18.4)
<b>United Kingdom</b>	166965 (157784, 177224)	244.7 (230.5, 260.4)	362500 (338481, 391401)	449.6 (420.6, 481.6)	83.7 (72.1, 96.3)
<b>Southern Latin America</b>	18692 (17219, 20282)	38.8 (35.7, 42.0)	33575 (31210, 36409)	45.6 (42.5, 49.3)	17.6 (9.4, 26.1)
<b>Argentina</b>	11959 (10847, 13249)	36.7 (33.3, 40.6)	21163 (19583, 23187)	43.7 (40.6, 47.8)	19.3 (7.9, 31.3)
<b>Chile</b>	5282 (4779, 5850)	43.6 (39.5, 48.3)	10584 (9629, 11770)	50.0 (45.5, 55.5)	14.8 (4.1, 27.8)
<b>Uruguay</b>	1451 (1338, 1591)	42.4 (39.1, 46.4)	1827 (1682, 2011)	45.0 (41.4, 49.5)	6.2 (-1.2, 16.0)
<b>Eastern Europe</b>	377954 (346486, 412059)	143.7 (131.7, 156.6)	296246 (270939, 322578)	104.5 (96.1, 113.8)	-27.3 (-32.6, -21.7)
<b>Belarus</b>	15643 (13542, 17925)	129.8 (113.0, 148.1)	14918 (12805, 17611)	115.9 (99.1, 135.8)	-10.7 (-19.0, -1.8)
<b>Estonia</b>	2893 (2660, 3140)	155.5 (143.0, 168.3)	2064 (1909, 2233)	111.5 (103.7, 120.1)	-28.3 (-33.5, -23.3)
<b>Latvia</b>	4301 (3938, 4684)	131.4 (120.3, 142.7)	3132 (2900, 3400)	111.9 (103.7, 120.6)	-14.8 (-21.4, -7.8)
<b>Lithuania</b>	5889 (5358, 6472)	137.0 (125.2, 150.0)	4491 (4146, 4849)	111.7 (103.1, 122.3)	-18.5 (-25.5, -11.5)
<b>Moldova</b>	4709 (4370, 5061)	102.3 (94.8, 110)	4856 (4502, 5235)	99.4 (92.7, 106.4)	-2.8 (-9.3, 3.2)
<b>Russia</b>	258284 (232383, 284795)	149.1 (134.4, 164.7)	197640 (179945, 216250)	101.2 (92.8, 110.1)	-32.1 (-38.7, -25.5)
<b>Ukraine</b>	86236 (77679, 95752)	135.4 (122.5, 149.8)	69145 (62566, 76575)	112.3 (101.5, 124.3)	-17.0 (-24.9, -8.2)
<b>Central Europe</b>	211813 (196617, 227208)	151.9 (141.7, 162.7)	249563 (231791, 268715)	161.5 (151.0, 173.0)	6.3 (3.7, 9.2)
<b>Albania</b>	4497 (3703, 5496)	162.9 (134.4, 198.1)	5871 (4693, 7253)	168.8 (135.8, 208.8)	3.6 (-8.7, 15.3)
<b>Bosnia and Herzegovina</b>	4833 (4469, 5235)	103.4 (95.9, 111.3)	5407 (5006, 5817)	117.6 (109.6, 125.5)	13.7 (9.0, 19.1)
<b>Bulgaria</b>	15428 (12632, 18793)	140.4 (115.6, 170.5)	15688 (12533, 19401)	155.8 (125.7, 192.6)	11.0 (0.7, 21.2)
<b>Croatia</b>	11156 (10282, 12102)	191.2 (176.7, 207.6)	11410 (10651, 12277)	194.2 (181.5, 208.0)	1.6 (-5.8, 8.3)
<b>Czech Republic</b>	22327 (20683, 24065)	186.1 (172.5, 199.7)	24029 (22563, 25792)	168.7 (158.9, 180.0)	-9.3 (-13.9, -5.0)
<b>Hungary</b>	11011 (10233, 11840)	89.0 (82.5, 95.6)	10467 (9721, 11260)	80.6 (75.2, 86.4)	-9.4 (-14.7, -3.9)
<b>Macedonia</b>	2656 (2152, 3271)	128.5 (104.9, 157.1)	4547 (3635, 5655)	161.8 (129.6, 201.9)	25.9 (13.3, 37.0)
<b>Montenegro</b>	1356 (1079, 1688)	208.2 (166.1, 259.6)	1310 (1050, 1627)	163.5 (131.3, 204.5)	-21.5 (-29.7, -12.5)
<b>Poland</b>	72792 (67488, 78845)	170.0 (158.4, 183.3)	97335 (90624, 104919)	189.7 (177.3, 203.8)	11.6 (6.0, 17.8)



<b>Romania</b>	34677 (32140, 37265)	131.9 (122.5, 141.6)	37512 (34902, 40152)	140.2 (131.2, 149.5)	6.3 (1.8, 10.9)
<b>Serbia</b>	15096 (14065, 16247)	140.2 (131.3, 150.3)	18095 (16903, 19450)	156.2 (146.1, 166.9)	11.4 (6.2, 17.8)
<b>Slovakia</b>	11058 (10259, 11888)	193.1 (179.6, 207.1)	12499 (11593, 13526)	176.1 (163.6, 189.9)	-8.8 (-13.9, -2.7)
<b>Slovenia</b>	4926 (4564, 5304)	214.2 (198.7, 229.9)	5392 (5037, 5800)	189.3 (177.3, 203.1)	-11.6 (-16.6, -6.3)
<b>Central Asia</b>	18291 (17248, 19419)	31.4 (29.7, 33.3)	28765 (26875, 30799)	32.3 (30.2, 34.5)	2.8 (-0.7, 6.3)
<b>Armenia</b>	1384 (1271, 1500)	42.5 (39.3, 46.0)	1352 (1247, 1466)	37.2 (34.4, 40.1)	-12.5 (-18.2, -6.9)
<b>Azerbaijan</b>	1864 (1731, 1999)	29.3 (27.2, 31.4)	3680 (3411, 3966)	33.5 (31.2, 36.0)	14.5 (9.7, 19.5)
<b>Georgia</b>	2105 (1939, 2280)	35.2 (32.5, 38.2)	1665 (1548, 1799)	36.1 (33.7, 39.0)	2.5 (-5.7, 10.4)
<b>Kazakhstan</b>	5845 (5385, 6319)	38.0 (35.1, 41.0)	5777 (5332, 6260)	31.3 (29, 33.9)	-17.5 (-23.2, -11.8)
<b>Kyrgyzstan</b>	1093 (1010, 1184)	29.8 (27.6, 32.1)	1792 (1664, 1925)	31.3 (29.1, 33.6)	5.3 (-1.9, 12.6)
<b>Mongolia</b>	336 (307, 370)	21.4 (19.5, 23.5)	917 (849, 990)	29.7 (27.7, 31.9)	39.0 (24.8, 55.1)
<b>Tajikistan</b>	866 (803, 935)	22.6 (21.0, 24.3)	2495 (2317, 2683)	32.9 (30.5, 35.4)	45.9 (35.0, 56.7)
<b>Turkmenistan</b>	700 (624, 788)	25.7 (22.8, 28.8)	1520 (1406, 1649)	31.9 (29.5, 34.4)	24.0 (9.7, 39.7)
<b>Uzbekistan</b>	4098 (3810, 4382)	26.4 (24.6, 28.3)	9568 (8903, 10340)	31.8 (29.5, 34.2)	20.4 (13.2, 27.5)
<b>Central Latin America</b>	24723 (22953, 26510)	23.2 (21.6, 25.0)	65310 (60586, 70561)	26.7 (24.8, 28.9)	15.2 (11.2, 20.0)
<b>Colombia</b>	4873 (4457, 5507)	22.0 (20.1, 24.5)	14058 (12650, 16464)	26.2 (23.7, 30.6)	19.5 (6.6, 37.9)
<b>Costa Rica</b>	1233 (1144, 1329)	58.5 (54.2, 63.2)	1487 (1323, 1743)	29.8 (26.6, 35.1)	-49.0 (-53.3, -40.8)
<b>El Salvador</b>	531 (458, 640)	15.4 (13.2, 19.0)	1361 (1234, 1545)	23.8 (21.5, 27.1)	53.8 (25.1, 80.0)
<b>Guatemala</b>	538 (476, 629)	11.3 (9.9, 13.1)	2777 (2505, 3191)	22.7 (20.4, 26.2)	101.2 (69.1, 138.0)
<b>Honduras</b>	330 (300, 373)	12.2 (10.9, 13.8)	1572 (1426, 1804)	22.7 (20.6, 26.1)	86.7 (61.7, 114.0)
<b>Mexico</b>	13023 (11911, 14184)	23.6 (21.6, 25.8)	33915 (30966, 37031)	27.9 (25.5, 30.4)	18.1 (13.8, 22.4)
<b>Nicaragua</b>	400 (370, 445)	19.1 (17.6, 21.1)	1384 (1256, 1576)	27.1 (24.6, 30.7)	41.8 (28.4, 63.1)
<b>Panama</b>	490 (454, 534)	27.9 (25.8, 30.8)	1161 (1016, 1403)	29.1 (25.6, 34.9)	4.3 (-6.9, 24.3)
<b>Venezuela</b>	3305 (3027, 3635)	26.5 (24.3, 29.3)	7593 (6900, 8689)	25.3 (23.1, 28.9)	-4.4 (-13.1, 8.0)
<b>Andean Latin America</b>	2921 (2739, 3130)	11.3 (10.5, 12.1)	5433 (5057, 5832)	9.5 (8.9, 10.2)	-15.4 (-19.9, -10.5)
<b>Bolivia</b>	308 (285, 333)	7.3 (6.7, 7.9)	770 (715, 833)	7.9 (7.3, 8.6)	8.4 (-0.2, 16.5)
<b>Ecuador</b>	791 (727, 878)	11.7 (10.7, 13.0)	1641 (1509, 1796)	10.5 (9.7, 11.5)	-9.7 (-19.9, 1.3)
<b>Peru</b>	1822 (1690, 1968)	12.2 (11.3, 13.2)	3022 (2783, 3293)	9.5 (8.8, 10.4)	-21.6 (-27.1, -15.0)
<b>Caribbean</b>	3582 (3325, 3853)	12.0 (11.1, 13.0)	3329 (3099, 3576)	6.7 (6.3, 7.2)	-44.0 (-46.4, -41.1)
<b>Antigua and Barbuda</b>	7 (6, 7)	12.0 (11.0, 13.0)	8 (7, 8)	7.8 (7.1, 8.6)	-35.0 (-39.5, -29)
<b>The Bahamas</b>	17 (16, 20)	8.6 (7.8, 9.8)	26 (24, 29)	6.7 (6.1, 7.4)	-21.8 (-31.8, -13.5)

<b>Barbados</b>	24 (22, 26)	9.1 (8.3, 9.9)	29 (26, 32)	7.4 (6.8, 8.3)	-18.0 (-25.4, -7.8)
<b>Belize</b>	8 (7, 8)	5.9 (5.4, 6.4)	22 (20, 24)	6.5 (6.0, 7.2)	11.1 (2.9, 21.4)
<b>Bermuda</b>	14 (13, 15)	22.1 (20.3, 23.8)	7 (7, 9)	8.4 (7.4, 9.9)	-62.0 (-66.2, -55.5)
<b>Cuba</b>	2214 (2028, 2419)	20.8 (19.0, 22.7)	1148 (1045, 1267)	7.6 (7.0, 8.2)	-63.7 (-65.9, -60.9)
<b>Dominica</b>	5 (5, 6)	7.9 (7.3, 8.6)	6 (5, 6)	6.9 (6.4, 7.6)	-12.4 (-17.3, -5.7)
<b>Dominican Republic</b>	299 (278, 322)	5.9 (5.4, 6.3)	696 (637, 767)	7.0 (6.4, 7.8)	20.4 (12.3, 30.5)
<b>Grenada</b>	4 (4, 5)	5.9 (5.4, 6.4)	9 (8, 10)	6.7 (6.0, 7.7)	14.9 (5.6, 28.5)
<b>Guyana</b>	19 (18, 21)	3.2 (3.0, 3.5)	37 (34, 40)	5.4 (5.0, 5.9)	66.2 (52.9, 80.1)
<b>Haiti</b>	140 (130, 152)	2.9 (2.6, 3.2)	416 (388, 449)	4.7 (4.4, 5.1)	63.4 (48.0, 80.3)
<b>Jamaica</b>	193 (179, 209)	9.8 (9.0, 10.7)	207 (190, 228)	7.2 (6.6, 7.9)	-26.8 (-32.2, -20.1)
<b>Puerto Rico</b>	397 (363, 439)	10.8 (9.9, 12.0)	421 (372, 487)	8.3 (7.4, 9.6)	-23.2 (-32.9, -10.1)
<b>Saint Lucia</b>	7 (7, 8)	6.7 (6.1, 7.3)	14 (13, 16)	7.1 (6.4, 8.0)	6.0 (-2.7, 18.1)
<b>Saint Vincent and the Grenadines</b>	5 (5, 6)	6.1 (5.6, 6.6)	8 (8, 9)	6.5 (6.0, 7.1)	6.5 (-0.6, 15.0)
<b>Suriname</b>	17 (15, 18)	5.2 (4.8, 5.7)	38 (35, 43)	6.5 (5.9, 7.2)	23.3 (12.2, 37.7)
<b>Trinidad and Tobago</b>	73 (66, 80)	7.1 (6.5, 7.8)	106 (96, 119)	6.5 (5.9, 7.3)	-8.4 (-16.2, 1.9)
<b>Virgin Islands</b>	16 (14, 17)	15.9 (14.6, 17.3)	11 (10, 13)	7.7 (6.7, 9.2)	-51.6 (-57.2, -42.6)
<b>Tropical Latin America</b>	73744 (66784, 80487)	65.6 (59.3, 71.6)	110563 (101449, 120814)	47.5 (43.5, 51.7)	-27.7 (-33.5, -21.3)
<b>Brazil</b>	72271 (65303, 78974)	65.9 (59.5, 72.0)	107647 (98592, 117714)	47.4 (43.5, 51.7)	-28.1 (-33.9, -21.6)
<b>Paraguay</b>	1473 (1375, 1583)	54.5 (50.7, 59.0)	2916 (2714, 3153)	50.0 (46.5, 54.2)	-8.1 (-14.5, -1.3)
<b>East Asia</b>	1104158 (1033626, 1178136)	101.2 (94.6, 108.2)	2767618 (2529326, 3010003)	134.6 (123.9, 145.6)	33.0 (28.2, 37.9)
<b>China</b>	1047992 (981582, 1116181)	101.3 (94.7, 108.2)	2665081 (2433419, 2900745)	136.2 (125.4, 147.4)	34.5 (29.7, 39.6)
<b>North Korea</b>	19502 (16717, 22706)	100.6 (86.9, 117.1)	24177 (20778, 28001)	75.2 (65.0, 86.6)	-25.3 (-33.5, -15.9)
<b>Taiwan (Province of China)</b>	18269 (16568, 20486)	95.4 (86.5, 105.9)	33775 (29725, 39798)	97.7 (85.0, 117.0)	2.4 (-10.0, 21.7)
<b>Southeast Asia</b>	45189 (41401, 49233)	12.1 (11.1, 13.3)	103884 (93977, 114931)	15.3 (13.9, 16.8)	26.0 (21.3, 31.1)
<b>Cambodia</b>	653 (512, 831)	8.9 (6.9, 11.5)	2192 (1698, 2813)	15.3 (11.9, 19.7)	71.6 (45.3, 102.5)
<b>Indonesia</b>	14253 (13047, 15639)	9.5 (8.7, 10.3)	36572 (33260, 40456)	14.0 (12.8, 15.4)	48.3 (40.1, 56.2)
<b>Laos</b>	273 (215, 346)	8.9 (7.0, 11.6)	909 (691, 1217)	15.6 (12.1, 21.0)	75.1 (43.7, 114.4)
<b>Malaysia</b>	2069 (1896, 2282)	14.2 (13.1, 15.5)	5324 (4807, 6110)	17.4 (15.8, 20.0)	22.9 (11.2, 39.6)
<b>Maldives</b>	26 (20, 33)	17.6 (13.9, 22.3)	86 (65, 115)	19.3 (14.9, 24.7)	9.6 (-2.1, 25.3)
<b>Mauritius</b>	306 (239, 390)	31.4 (25.0, 39.8)	301 (232, 392)	19.1 (14.8, 24.5)	-39.4 (-47.1, -29.5)
<b>Myanmar</b>	3032 (2362, 3861)	9.1 (7.1, 11.6)	8335 (6280, 11046)	15.9 (12.1, 20.8)	73.5 (42.7, 108.7)

<b>Philippines</b>	5115 (4722, 5589)	10.9 (10.1, 12.0)	12111 (11183, 13067)	13.2 (12.2, 14.2)	20.9 (12.4, 29.4)
<b>Sri Lanka</b>	1807 (1673, 1953)	12.0 (11.1, 12.9)	3703 (3379, 4095)	15.1 (13.8, 16.6)	25.4 (18.3, 35.7)
<b>Seychelles</b>	16 (12, 20)	24.9 (19.6, 31.7)	23 (17, 31)	20.1 (15.2, 26.7)	-19.5 (-32.1, 4.4)
<b>Thailand</b>	6317 (5831, 6850)	12.7 (11.7, 13.7)	13718 (12487, 15395)	14.8 (13.5, 16.6)	16.9 (8.6, 28.7)
<b>East Timor</b>	55 (42, 71)	9.8 (7.5, 12.5)	166 (128, 212)	17 (13, 21.8)	74.4 (46.4, 107.2)
<b>Vietnam</b>	11209 (9579, 13191)	21.6 (18.4, 25.5)	20307 (17308, 24157)	19.8 (17, 23.3)	-8.2 (-17, 3.3)
<b>Oceania</b>	627 (565, 698)	13.6 (12.3, 15.1)	2302 (1936, 2743)	24.6 (20.9, 29.3)	81.3 (60.4, 102.8)
<b>American Samoa</b>	13 (12, 16)	38.1 (33.4, 44.2)	17 (14, 21)	32.5 (27.4, 38.8)	-14.8 (-26, -4.9)
<b>Federated States of Micronesia</b>	9 (8, 11)	13.3 (11.6, 15.5)	24 (20, 28)	26.3 (22.5, 31.6)	98.4 (65.8, 132.1)
<b>Fiji</b>	84 (75, 95)	14.7 (13.1, 16.7)	236 (197, 285)	26.8 (22.6, 31.9)	82 (64.2, 99.4)
<b>Guam</b>	63 (56, 72)	55.2 (48.0, 63.3)	64 (53, 77)	34.8 (29.2, 41.8)	-36.9 (-43.8, -28)
<b>Kiribati</b>	6 (5, 7)	10.7 (9.7, 11.9)	23 (19, 28)	25.5 (21.5, 30.8)	138.1 (104.6, 177.4)
<b>Marshall Islands</b>	4 (3, 4)	12.9 (11.3, 14.7)	12 (10, 14)	26.2 (22.2, 31.2)	103.7 (74.1, 133.6)
<b>Northern Mariana Islands</b>	21 (19, 24)	56.4 (49.7, 64.0)	20 (16, 25)	34.5 (29.1, 41.2)	-38.9 (-44.6, -31.4)
<b>Papua New Guinea</b>	296 (263, 336)	10.0 (8.8, 11.3)	1538 (1284, 1838)	23.6 (19.7, 28.2)	136.3 (100.1, 175.1)
<b>Samoa</b>	29 (26, 33)	25.0 (22.0, 28.5)	49 (42, 59)	30.7 (26.1, 36.3)	23.1 (9.8, 37.5)
<b>Solomon Islands</b>	23 (21, 26)	10.3 (9.2, 11.5)	111 (94, 133)	24.6 (20.7, 29.5)	139.8 (106.3, 177.7)
<b>Tonga</b>	24 (21, 27)	33.9 (29.8, 38.7)	27 (23, 32)	30.0 (25.4, 35.8)	-11.4 (-19.5, -1.7)
<b>Vanuatu</b>	12 (11, 14)	11.7 (10.4, 13.3)	55 (46, 66)	25.6 (21.5, 30.9)	118.5 (85.6, 153.2)
<b>North Africa and Middle East</b>	58503 (52019, 65412)	22.9 (20.4, 25.6)	166817 (146799, 191174)	29.6 (26.2, 33.8)	29.4 (21.5, 37.6)
<b>Afghanistan</b>	921 (740, 1159)	11.8 (9.4, 14.8)	4288 (3412, 5307)	20.7 (16.5, 25.7)	74.9 (44.9, 109.4)
<b>Algeria</b>	3841 (3106, 4689)	21.1 (17.0, 25.8)	12036 (9530, 15222)	29.7 (23.7, 37.6)	41.0 (20.0, 64.6)
<b>Bahrain</b>	163 (124, 211)	36.6 (28.9, 46.6)	532 (413, 696)	29.4 (23.4, 37.2)	-19.6 (-28.4, -10.2)
<b>Egypt</b>	7814 (6344, 9712)	17.9 (14.4, 22.4)	22797 (17992, 28809)	26.7 (21.2, 33.8)	48.9 (22.8, 77.4)
<b>Iran</b>	9677 (8774, 10688)	23.3 (21.2, 25.5)	23812 (21600, 26364)	27.0 (24.6, 29.6)	16.2 (6.0, 26.7)
<b>Iraq</b>	2538 (2033, 3110)	21.4 (17.1, 26.6)	9115 (7331, 11261)	26.2 (21.1, 32.2)	22.4 (6.5, 40.2)
<b>Jordan</b>	862 (706, 1077)	34.4 (28.2, 43.0)	2957 (2413, 3623)	31.4 (25.7, 38.7)	-8.6 (-19.1, 5.4)
<b>Kuwait</b>	480 (437, 539)	29.8 (27.3, 32.9)	1526 (1357, 1733)	30.9 (28.0, 34.8)	4.0 (-4.8, 15.5)
<b>Lebanon</b>	603 (558, 656)	18.5 (17.1, 20.0)	1539 (1418, 1694)	19.3 (17.8, 21.1)	4.2 (-3.5, 13.1)
<b>Libya</b>	594 (547, 666)	18.7 (17.3, 20.5)	1262 (1158, 1381)	18.3 (16.9, 19.8)	-1.9 (-10.9, 6.3)
<b>Morocco</b>	3507 (2819, 4298)	17.7 (14.1, 22.1)	10323 (8099, 12868)	28.5 (22.4, 35.1)	61.4 (31.5, 94.1)

<b>Palestine</b>	446 (351, 574)	34.8 (27.2, 45.7)	1161 (933, 1445)	30.2 (24.4, 37.7)	-13.2 (-23.5, -0.3)
<b>Oman</b>	367 (313, 437)	25.5 (22.2, 29.5)	1264 (1034, 1595)	27.6 (23.5, 33.3)	8.4 (-6.1, 31.8)
<b>Qatar</b>	178 (158, 210)	43.1 (38.9, 50.2)	1233 (1088, 1476)	40.1 (36.2, 46.0)	-6.9 (-20.1, 6.9)
<b>Saudi Arabia</b>	2899 (2601, 3294)	23.9 (21.6, 26.9)	9375 (8370, 11115)	25.4 (22.9, 29.1)	6.3 (-5.6, 21.7)
<b>Sudan</b>	1732 (1414, 2063)	11.9 (9.7, 14.2)	6979 (5563, 8695)	24.0 (19.1, 30.0)	101.0 (69.3, 137.3)
<b>Syria</b>	2572 (2033, 3235)	30.8 (24.3, 39.5)	4707 (3715, 5943)	28.8 (22.6, 36.0)	-6.7 (-16.1, 3.2)
<b>Tunisia</b>	1724 (1393, 2141)	25.5 (20.5, 31.8)	4128 (3224, 5282)	32.2 (25.4, 40.9)	26.3 (10.1, 47.2)
<b>Turkey</b>	16031 (14499, 18032)	33.5 (30.3, 37.5)	38881 (35173, 43130)	43.6 (39.6, 48.1)	30.1 (15.8, 44.6)
<b>United Arab Emirates</b>	511 (386, 669)	31.0 (24.4, 38.8)	3682 (2607, 5186)	28.7 (22.5, 37.6)	-7.5 (-19.6, 11.5)
<b>Yemen</b>	1005 (819, 1216)	11.4 (9.4, 13.7)	5065 (3969, 6373)	23.4 (18.4, 29.4)	104.5 (71.8, 143.0)
<b>South Asia</b>	109710 (101262, 118952)	12.5 (11.6, 13.5)	267099 (243347, 295122)	16.1 (14.7, 17.8)	29.0 (24.3, 34.0)
<b>Bangladesh</b>	8164 (7401, 9027)	10.6 (9.5, 11.9)	23839 (21203, 27231)	16.2 (14.3, 18.5)	52.6 (35, 71.3)
<b>Bhutan</b>	51 (46, 55)	12.6 (11.4, 14.0)	148 (133, 166)	16.9 (15.2, 18.8)	33.6 (24.5, 43.4)
<b>India</b>	89149 (82262, 96873)	12.6 (11.6, 13.6)	212451 (192979, 235104)	16.2 (14.7, 17.9)	28.6 (23.8, 33.5)
<b>Nepal</b>	1581 (1458, 1714)	11.0 (10.1, 12.0)	3725 (3410, 4179)	14.0 (12.8, 15.8)	27.6 (17.7, 41.4)
<b>Pakistan</b>	10766 (9802, 11837)	13.9 (12.6, 15.5)	26936 (24106, 29871)	15.9 (14.3, 17.8)	14.3 (6.9, 21.6)
<b>Southern sub-Saharan Africa</b>	6729 (6200, 7309)	16.9 (15.6, 18.4)	7549 (6917, 8191)	10.7 (9.9, 11.6)	-36.6 (-39.7, -33.1)
<b>Botswana</b>	121 (113, 130)	12.7 (11.9, 13.7)	199 (182, 220)	9.8 (9.0, 10.8)	-22.8 (-28.3, -15.5)
<b>Lesotho</b>	115 (107, 123)	8.4 (7.8, 9.0)	143 (133, 152)	8.7 (8.1, 9.3)	3.5 (-2.6, 9.5)
<b>Namibia</b>	121 (112, 132)	11.5 (10.6, 12.4)	207 (189, 226)	10.4 (9.6, 11.4)	-9.3 (-16.4, -1.9)
<b>South Africa</b>	5392 (4922, 5909)	18.5 (16.9, 20.3)	5954 (5404, 6519)	11.2 (10.2, 12.2)	-39.4 (-43.0, -35.5)
<b>Swaziland</b>	55 (50, 61)	10.3 (9.4, 11.4)	80 (73, 86)	9.0 (8.3, 9.8)	-12.8 (-20.5, -5.5)
<b>Zimbabwe</b>	925 (857, 995)	13.2 (12.2, 14.2)	966 (901, 1033)	8.8 (8.2, 9.5)	-33.1 (-36.5, -29.5)
<b>Western sub-Saharan Africa</b>	11958 (11218, 12750)	8.5 (8.0, 9.1)	34191 (31884, 36569)	11.2 (10.4, 12.0)	31.4 (24.8, 37.4)
<b>Benin</b>	261 (245, 280)	8.0 (7.5, 8.6)	900 (838, 966)	11.2 (10.4, 12.1)	40.3 (32.6, 47.8)
<b>Burkina Faso</b>	443 (417, 473)	6.5 (6.1, 7.0)	1500 (1395, 1611)	10.3 (9.6, 11.1)	58.1 (46.8, 69.2)
<b>Cameroon</b>	639 (590, 695)	8.6 (7.9, 9.4)	2058 (1900, 2234)	10.3 (9.6, 11.2)	20.5 (11.7, 28.7)
<b>Cape Verde</b>	64 (59, 68)	23.8 (22.1, 25.5)	74 (68, 82)	14.3 (13.1, 15.7)	-39.9 (-43.1, -34.7)
<b>Chad</b>	305 (285, 328)	7.2 (6.8, 7.8)	996 (923, 1071)	10.6 (9.8, 11.4)	46.3 (36.9, 56.3)
<b>Cote d'Ivoire</b>	623 (583, 668)	7.3 (6.8, 7.8)	1809 (1676, 1941)	9.8 (9.1, 10.6)	35.2 (26.7, 43.8)
<b>The Gambia</b>	76 (70, 81)	11.0 (10.2, 11.7)	185 (173, 199)	11.9 (11.1, 12.9)	8.6 (4.0, 13.2)

<b>Ghana</b>	862 (805, 925)	7.8 (7.2, 8.4)	2697 (2507, 2899)	11.0 (10.2, 11.9)	41.9 (32.9, 51.5)
<b>Guinea</b>	317 (296, 341)	6.9 (6.4, 7.4)	898 (834, 963)	10.8 (10.1, 11.7)	58.2 (46.3, 69.2)
<b>Guinea-Bissau</b>	45 (42, 47)	6.2 (5.8, 6.7)	126 (117, 136)	9.7 (9.0, 10.4)	55.1 (44.4, 65.6)
<b>Liberia</b>	105 (98, 113)	7.0 (6.5, 7.5)	380 (352, 410)	10.9 (10.1, 11.8)	56.1 (44.3, 66.4)
<b>Mali</b>	426 (398, 456)	6.8 (6.3, 7.3)	1454 (1354, 1557)	10.8 (10.1, 11.7)	60.1 (49.6, 71.4)
<b>Mauritania</b>	158 (145, 171)	10.4 (9.6, 11.4)	386 (351, 441)	13.0 (11.8, 14.7)	24.4 (12.5, 41.0)
<b>Niger</b>	378 (348, 418)	7.0 (6.4, 7.8)	1438 (1342, 1541)	11.1 (10.2, 11.9)	57.1 (41.6, 71.2)
<b>Nigeria</b>	6367 (5898, 6942)	9.4 (8.7, 10.3)	16806 (15595, 18045)	11.8 (10.9, 12.6)	24.5 (15.5, 33.0)
<b>Sao Tome and Principe</b>	11 (10, 12)	12.0 (11.1, 12.9)	21 (19, 22)	12.7 (11.8, 13.7)	6.2 (0.7, 11.4)
<b>Senegal</b>	466 (435, 500)	8.7 (8.1, 9.3)	1250 (1162, 1338)	11.4 (10.5, 12.2)	30.5 (23.4, 37.1)
<b>Sierra Leone</b>	225 (209, 241)	7.9 (7.4, 8.5)	607 (565, 651)	10.6 (9.9, 11.5)	34.3 (26.0, 42.5)
<b>Togo</b>	189 (176, 203)	7.6 (7.1, 8.2)	605 (559, 650)	10.4 (9.7, 11.2)	37.7 (29.0, 46.1)
<b>Eastern sub-Saharan Africa</b>	10526 (9868, 11247)	7.9 (7.4, 8.4)	27280 (25463, 29354)	9.9 (9.2, 10.6)	25.8 (21.7, 30.0)
<b>Burundi</b>	225 (204, 254)	5.4 (4.9, 6.2)	700 (648, 763)	9.1 (8.4, 9.9)	68.2 (46.9, 88.7)
<b>Comoros</b>	26 (24, 28)	7.6 (7.0, 8.4)	76 (69, 85)	12.1 (11.1, 13.6)	58.7 (41.7, 80.0)
<b>Djibouti</b>	35 (31, 41)	10.1 (9.2, 11.3)	116 (105, 132)	12.1 (11.0, 13.5)	19.2 (6.5, 33.7)
<b>Eritrea</b>	126 (116, 137)	6.0 (5.5, 6.6)	444 (412, 480)	10.2 (9.4, 11.0)	68.7 (53.9, 84.1)
<b>Ethiopia</b>	3115 (2848, 3432)	8.8 (8.1, 9.7)	6918 (6306, 7602)	9.7 (8.8, 10.6)	10.1 (4.4, 15.6)
<b>Kenya</b>	1816 (1670, 1982)	11.8 (10.8, 12.8)	3999 (3658, 4374)	11.0 (10.0, 12.0)	-6.8 (-9.0, -4.4)
<b>Madagascar</b>	652 (603, 703)	7.7 (7.0, 8.4)	2076 (1910, 2234)	11.0 (10.2, 11.9)	43.7 (31.1, 56.9)
<b>Malawi</b>	443 (409, 482)	6.3 (5.9, 6.9)	1056 (981, 1135)	8.9 (8.3, 9.6)	40.3 (27.9, 52.7)
<b>Mozambique</b>	651 (607, 698)	6.2 (5.7, 6.7)	1941 (1795, 2091)	9.8 (9.1, 10.5)	58.6 (46.9, 71.4)
<b>Rwanda</b>	317 (291, 344)	6.1 (5.5, 6.7)	919 (851, 984)	9.8 (9.0, 10.5)	60.7 (44.8, 77.8)
<b>Somalia</b>	303 (281, 328)	5.8 (5.3, 6.3)	1100 (1020, 1177)	9.6 (8.9, 10.3)	66.2 (51.2, 81.0)
<b>South Sudan</b>	315 (287, 350)	7.4 (6.8, 8.2)	705 (652, 761)	10.5 (9.7, 11.3)	41.1 (26.7, 54.7)
<b>Tanzania</b>	1406 (1314, 1500)	7.9 (7.3, 8.4)	3811 (3558, 4090)	10.0 (9.3, 10.7)	26.8 (20.3, 33.0)
<b>Uganda</b>	711 (665, 759)	5.9 (5.5, 6.3)	2357 (2178, 2572)	9.2 (8.5, 10.0)	56.5 (44.5, 70.1)
<b>Zambia</b>	382 (354, 417)	7.2 (6.6, 7.9)	1046 (962, 1159)	8.8 (8.1, 9.8)	23.1 (11.4, 35.6)
<b>Central sub-Saharan Africa</b>	3165 (2948, 3385)	7.7 (7.2, 8.2)	9006 (8400, 9629)	10.2 (9.5, 11.0)	33.2 (25.2, 40.8)
<b>Angola</b>	531 (475, 601)	7.1 (6.3, 8.2)	2063 (1889, 2276)	10.6 (9.7, 11.7)	49.6 (30.1, 69.8)
<b>Central African Republic</b>	120 (108, 136)	5.6 (5.0, 6.3)	300 (278, 324)	8.4 (7.7, 9.0)	49.6 (31.4, 68.4)

<b>Congo</b>	133 (122, 144)	7.2 (6.6, 7.9)	390 (360, 424)	9.6 (8.9, 10.4)	33.5 (22.1, 44.7)
<b>DR Congo</b>	2254 (2088, 2434)	7.9 (7.3, 8.5)	5993 (5567, 6445)	10.2 (9.5, 11.0)	30.0 (21.1, 38.5)
<b>Equatorial Guinea</b>	18 (17, 20)	5.7 (5.3, 6.3)	99 (89, 113)	10.7 (9.6, 12.2)	86.7 (67.5, 112.9)
<b>Gabon</b>	109 (101, 117)	13.3 (12.3, 14.3)	159 (148, 172)	10.7 (10.0, 11.6)	-19.0 (-23.8, -14.8)

**Appendix table 3: Deaths due to IBD in 1990 and 2017 for both sexes and percentage change in age-standardised rates by location**

	1990		2017		Percentage change in age-standardized rates between 1990 and 2017
	Counts (95% UI)	Rate (95% UI)	Counts (95% UI)	Rate (95% UI)	
<b>Global</b>	23126 (20184, 27466)	0.6 (0.5, 0.7)	38629 (31595, 41157)	0.5 (0.4, 0.5)	-16.4 (-36.0, -4.7)
<b>High-income North America</b>	2215 (2061, 2920)	0.6 (0.6, 0.8)	5254 (3471, 5785)	0.8 (0.6, 0.9)	36.9 (-22.3, 57.1)
<b>Canada</b>	242 (204, 300)	0.7 (0.6, 0.9)	375 (328, 483)	0.5 (0.5, 0.7)	-29.4 (-38.5, -5.3)
<b>Greenland</b>	0 (0, 0)	0.3 (0.3, 0.4)	0 (0, 0)	0.5 (0.3, 0.6)	51.7 (-10.9, 113.3)
<b>USA</b>	1973 (1825, 2630)	0.6 (0.6, 0.8)	4878 (3064, 5413)	0.9 (0.6, 1.0)	46.0 (-21.1, 69.1)
<b>Australasia</b>	114 (102, 153)	0.5 (0.4, 0.7)	327 (194, 391)	0.6 (0.4, 0.7)	19.2 (-39.3, 46.3)
<b>Australia</b>	95 (85, 133)	0.5 (0.4, 0.7)	301 (176, 363)	0.6 (0.4, 0.8)	28.5 (-38.5, 62.1)
<b>New Zealand</b>	19 (11, 22)	0.5 (0.3, 0.6)	26 (18, 30)	0.3 (0.2, 0.4)	-35.1 (-49.0, -1.6)
<b>High-income Asia-Pacific</b>	681 (418, 769)	0.4 (0.2, 0.4)	772 (645, 1195)	0.2 (0.1, 0.2)	-59.4 (-70.0, -3.1)
<b>Brunei</b>	1 (1, 2)	1.4 (1.0, 1.7)	3 (2, 3)	1.0 (0.9, 1.3)	-26.3 (-40.9, -0.4)
<b>Japan</b>	357 (288, 376)	0.2 (0.2, 0.2)	491 (406, 815)	0.1 (0.1, 0.2)	-47.2 (-56.9, -5.5)
<b>Singapore</b>	4 (3, 4)	0.2 (0.1, 0.2)	6 (4, 9)	0.1 (0.1, 0.1)	-53.0 (-63.8, -13.1)
<b>South Korea</b>	319 (122, 398)	1.6 (0.5, 2.1)	273 (222, 372)	0.4 (0.3, 0.5)	-77.8 (-84.6, -8.7)
<b>Western Europe</b>	4263 (3943, 5665)	0.7 (0.7, 1.0)	10356 (5627, 11839)	1.0 (0.5, 1.1)	33.6 (-37.5, 59.0)
<b>Andorra</b>	0 (0, 1)	0.7 (0.5, 1.0)	1 (1, 1)	0.7 (0.4, 1.0)	-3.0 (-32.4, 37.4)
<b>Austria</b>	100 (89, 136)	0.9 (0.8, 1.1)	101 (85, 156)	0.5 (0.4, 0.8)	-38.2 (-48.5, -9.1)
<b>Belgium</b>	97 (87, 123)	0.6 (0.6, 0.8)	228 (119, 275)	0.8 (0.5, 1.0)	32.8 (-35.6, 66.7)
<b>Cyprus</b>	10 (5, 14)	1.4 (0.6, 1.9)	11 (6, 13)	0.6 (0.3, 0.7)	-59.8 (-70.0, -35.2)
<b>Denmark</b>	42 (33, 51)	0.5 (0.4, 0.6)	70 (50, 81)	0.6 (0.4, 0.7)	17.0 (-24.5, 42.6)
<b>Finland</b>	29 (15, 37)	0.4 (0.2, 0.5)	34 (24, 40)	0.3 (0.2, 0.3)	-36.1 (-50.4, -1.3)
<b>France</b>	835 (633, 936)	0.9 (0.7, 1.0)	1846 (688, 2305)	1.0 (0.4, 1.3)	12.8 (-49.0, 37.2)
<b>Germany</b>	1121 (901, 1996)	0.9 (0.7, 1.5)	3557 (1949, 4312)	1.6 (0.9, 2.0)	89.3 (-33.8, 165.4)
<b>Greece</b>	30 (22, 34)	0.2 (0.2, 0.2)	57 (39, 67)	0.2 (0.1, 0.2)	-4.6 (-18.7, 15.2)
<b>Iceland</b>	2 (1, 2)	0.5 (0.5, 0.8)	3 (2, 4)	0.6 (0.4, 0.6)	1.0 (-42.9, 28.8)
<b>Ireland</b>	31 (24, 35)	0.8 (0.6, 0.9)	46 (28, 55)	0.6 (0.4, 0.7)	-22.0 (-50.6, -4.8)
<b>Israel</b>	23 (18, 27)	0.5 (0.4, 0.6)	50 (36, 58)	0.4 (0.3, 0.5)	-15.5 (-36.1, 0.2)
<b>Italy</b>	338 (289, 547)	0.4 (0.3, 0.6)	1353 (605, 1643)	0.8 (0.3, 1.0)	99.0 (-39.4, 170.6)

<b>Luxembourg</b>	4 (4, 5)	0.8 (0.7, 1.0)	11 (5, 15)	1.1 (0.5, 1.4)	39.7 (-42.7, 84.9)
<b>Malta</b>	2 (2, 2)	0.5 (0.4, 0.6)	6 (3, 7)	0.6 (0.4, 0.8)	36.5 (-30.5, 72.0)
<b>Netherlands</b>	255 (229, 309)	1.3 (1.1, 1.5)	627 (329, 745)	1.7 (0.9, 2)	34.2 (-33, 62.0)
<b>Norway</b>	29 (25, 47)	0.4 (0.4, 0.7)	41 (36, 52)	0.4 (0.4, 0.5)	-3.3 (-41.4, 13.6)
<b>Portugal</b>	75 (66, 83)	0.6 (0.5, 0.7)	252 (95, 317)	0.9 (0.3, 1.1)	44.3 (-42.5, 84.3)
<b>Spain</b>	235 (202, 266)	0.4 (0.4, 0.5)	362 (316, 471)	0.3 (0.3, 0.4)	-23.6 (-39.3, -1.3)
<b>Sweden</b>	98 (67, 109)	0.6 (0.4, 0.7)	83 (73, 104)	0.3 (0.3, 0.5)	-43.4 (-52.2, -3.5)
<b>Switzerland</b>	63 (34, 78)	0.6 (0.3, 0.7)	104 (68, 124)	0.5 (0.3, 0.6)	-8.0 (-26.3, 31.8)
<b>United Kingdom</b>	838 (780, 1062)	0.9 (0.8, 1.1)	1501 (995, 1649)	1.1 (0.7, 1.2)	19.9 (-29.1, 35.7)
<b>Southern Latin America</b>	165 (142, 197)	0.4 (0.3, 0.4)	231 (202, 268)	0.3 (0.2, 0.3)	-21.2 (-35.3, -2.6)
<b>Argentina</b>	109 (95, 129)	0.3 (0.3, 0.4)	145 (125, 170)	0.3 (0.2, 0.3)	-20.0 (-36.1, -2.0)
<b>Chile</b>	45 (33, 51)	0.4 (0.3, 0.5)	64 (55, 80)	0.3 (0.2, 0.4)	-36.0 (-48.1, -2.2)
<b>Uruguay</b>	11 (9, 19)	0.3 (0.2, 0.5)	22 (15, 25)	0.4 (0.3, 0.5)	38.7 (-32.8, 86.9)
<b>Eastern Europe</b>	1476 (1107, 1655)	0.5 (0.4, 0.6)	1563 (1199, 1679)	0.5 (0.4, 0.5)	-10.8 (-18.3, 2.0)
<b>Belarus</b>	58 (46, 66)	0.5 (0.4, 0.5)	65 (46, 78)	0.4 (0.3, 0.5)	-5.0 (-27.6, 13.8)
<b>Estonia</b>	12 (9, 15)	0.6 (0.4, 0.8)	9 (7, 11)	0.4 (0.3, 0.4)	-40.1 (-55.6, -8.1)
<b>Latvia</b>	13 (11, 17)	0.4 (0.3, 0.5)	13 (10, 16)	0.4 (0.3, 0.4)	2.9 (-32.0, 30.2)
<b>Lithuania</b>	16 (12, 18)	0.3 (0.3, 0.4)	19 (13, 22)	0.3 (0.2, 0.4)	0.5 (-26.4, 19.1)
<b>Moldova</b>	18 (15, 20)	0.4 (0.3, 0.5)	17 (14, 20)	0.3 (0.3, 0.4)	-17.8 (-29.5, -6.8)
<b>Russia</b>	1127 (797, 1282)	0.6 (0.5, 0.7)	1162 (845, 1258)	0.5 (0.4, 0.6)	-18.2 (-25.8, -7.4)
<b>Ukraine</b>	233 (194, 286)	0.3 (0.3, 0.4)	276 (246, 329)	0.4 (0.4, 0.5)	22.2 (-1.5, 51.8)
<b>Central Europe</b>	631 (572, 818)	0.5 (0.4, 0.6)	917 (658, 1004)	0.5 (0.3, 0.5)	-2.8 (-41.4, 13.8)
<b>Albania</b>	44 (14, 55)	1.4 (0.6, 1.7)	11 (8, 21)	0.3 (0.3, 0.6)	-76.2 (-83.6, -4.9)
<b>Bosnia and Herzegovina</b>	13 (7, 16)	0.3 (0.2, 0.4)	15 (9, 19)	0.3 (0.2, 0.3)	-18.3 (-33.9, 3.9)
<b>Bulgaria</b>	21 (18, 31)	0.2 (0.2, 0.3)	34 (24, 39)	0.3 (0.2, 0.3)	27.3 (-31.3, 60.6)
<b>Croatia</b>	16 (14, 27)	0.3 (0.2, 0.4)	31 (21, 36)	0.4 (0.2, 0.4)	37.6 (-37.2, 80.9)
<b>Czech Republic</b>	69 (60, 96)	0.5 (0.5, 0.7)	119 (65, 142)	0.6 (0.3, 0.7)	13.7 (-51.1, 44.2)
<b>Hungary</b>	87 (76, 127)	0.6 (0.6, 0.9)	95 (80, 113)	0.5 (0.4, 0.6)	-17.3 (-47.8, -1.4)
<b>Macedonia</b>	3 (3, 4)	0.2 (0.2, 0.2)	5 (3, 6)	0.2 (0.1, 0.2)	-17.8 (-38.6, 4.3)
<b>Montenegro</b>	2 (1, 2)	0.3 (0.2, 0.4)	3 (2, 3)	0.3 (0.2, 0.3)	-9.6 (-26.1, 9.5)
<b>Poland</b>	217 (172, 300)	0.5 (0.4, 0.7)	328 (214, 379)	0.5 (0.3, 0.5)	-4.5 (-48.8, 25.5)



<b>Romania</b>	60 (51, 81)	0.2 (0.2, 0.3)	72 (61, 86)	0.2 (0.2, 0.3)	-9.9 (-37.4, 13.4)
<b>Serbia</b>	56 (42, 75)	0.5 (0.4, 0.7)	126 (72, 147)	0.8 (0.5, 1.0)	55.5 (-29.6, 105.4)
<b>Slovakia</b>	32 (26, 55)	0.6 (0.5, 1.0)	63 (46, 73)	0.8 (0.6, 0.9)	34.9 (-34.8, 83.6)
<b>Slovenia</b>	10 (8, 11)	0.4 (0.3, 0.5)	16 (10, 19)	0.4 (0.2, 0.4)	-17.3 (-48.2, -1.6)
<b>Central Asia</b>	222 (177, 268)	0.4 (0.3, 0.5)	235 (183, 265)	0.3 (0.2, 0.3)	-25.6 (-38.3, -15.9)
<b>Armenia</b>	7 (5, 8)	0.2 (0.2, 0.3)	10 (6, 11)	0.2 (0.2, 0.3)	2.9 (-21.5, 23.4)
<b>Azerbaijan</b>	9 (8, 12)	0.2 (0.1, 0.2)	14 (11, 18)	0.2 (0.1, 0.2)	-4.8 (-37.2, 34.5)
<b>Georgia</b>	14 (8, 16)	0.2 (0.1, 0.3)	14 (7, 17)	0.2 (0.1, 0.3)	6.5 (-6.7, 21.5)
<b>Kazakhstan</b>	79 (62, 93)	0.6 (0.4, 0.7)	82 (52, 99)	0.5 (0.3, 0.6)	-20.2 (-40.8, -2.8)
<b>Kyrgyzstan</b>	19 (11, 23)	0.5 (0.3, 0.6)	12 (9, 15)	0.2 (0.2, 0.3)	-55.1 (-68.5, -18.8)
<b>Mongolia</b>	11 (5, 16)	0.7 (0.4, 1.0)	11 (7, 16)	0.4 (0.3, 0.6)	-41.7 (-59.8, -18.0)
<b>Tajikistan</b>	21 (13, 39)	0.4 (0.3, 0.6)	22 (17, 27)	0.3 (0.2, 0.4)	-25.0 (-53.3, 5.0)
<b>Turkmenistan</b>	10 (7, 14)	0.4 (0.3, 0.5)	12 (10, 15)	0.3 (0.2, 0.3)	-24.9 (-37.5, -7.6)
<b>Uzbekistan</b>	52 (35, 64)	0.3 (0.2, 0.3)	59 (48, 70)	0.2 (0.2, 0.3)	-27.2 (-41.3, -3.4)
<b>Central Latin America</b>	297 (276, 345)	0.3 (0.3, 0.4)	753 (544, 823)	0.3 (0.2, 0.4)	5.0 (-25.5, 19.9)
<b>Colombia</b>	57 (51, 68)	0.3 (0.3, 0.3)	147 (89, 176)	0.3 (0.2, 0.3)	-3.2 (-44.2, 18.5)
<b>Costa Rica</b>	3 (2, 4)	0.2 (0.1, 0.2)	9 (6, 10)	0.2 (0.1, 0.2)	12.8 (-19.2, 40.7)
<b>El Salvador</b>	14 (7, 17)	0.4 (0.2, 0.5)	9 (7, 13)	0.2 (0.1, 0.2)	-58.9 (-70.5, -5.2)
<b>Guatemala</b>	11 (7, 22)	0.2 (0.2, 0.4)	32 (19, 38)	0.3 (0.2, 0.3)	28.7 (-50.4, 92.8)
<b>Honduras</b>	16 (11, 21)	0.6 (0.4, 0.8)	39 (26, 56)	0.6 (0.4, 0.9)	4.1 (-26.7, 45.3)
<b>Mexico</b>	157 (147, 194)	0.3 (0.3, 0.4)	451 (319, 497)	0.4 (0.3, 0.4)	21.5 (-15.6, 39.6)
<b>Nicaragua</b>	3 (3, 4)	0.2 (0.1, 0.2)	6 (4, 7)	0.1 (0.1, 0.1)	-28.4 (-46.4, -9.7)
<b>Panama</b>	7 (6, 12)	0.4 (0.3, 0.7)	24 (17, 28)	0.6 (0.4, 0.7)	39.5 (-34.7, 97.2)
<b>Venezuela</b>	29 (17, 33)	0.2 (0.2, 0.3)	38 (32, 46)	0.1 (0.1, 0.2)	-45.6 (-58.2, -5.2)
<b>Andean Latin America</b>	176 (116, 301)	0.5 (0.4, 0.8)	144 (123, 164)	0.3 (0.2, 0.3)	-52.9 (-70.3, -34.2)
<b>Bolivia</b>	27 (11, 64)	0.5 (0.3, 1.0)	35 (25, 45)	0.4 (0.3, 0.5)	-26.4 (-63.2, 36.3)
<b>Ecuador</b>	20 (15, 25)	0.3 (0.2, 0.3)	34 (24, 40)	0.2 (0.2, 0.3)	-10.9 (-43.1, 14.2)
<b>Peru</b>	130 (82, 227)	0.7 (0.5, 1.0)	76 (62, 96)	0.2 (0.2, 0.3)	-65.6 (-79.4, -47.1)
<b>Caribbean</b>	150 (118, 212)	0.5 (0.4, 0.7)	187 (159, 226)	0.4 (0.3, 0.5)	-29.8 (-42.9, -13.2)
<b>Antigua and Barbuda</b>	0 (0, 0)	0.8 (0.5, 0.9)	0 (0, 1)	0.4 (0.4, 0.6)	-43.8 (-55.7, -7.9)
<b>The Bahamas</b>	1 (1, 1)	0.7 (0.6, 0.9)	2 (2, 2)	0.5 (0.5, 0.6)	-23.5 (-39.1, -3.6)

<b>Barbados</b>	1 (1, 2)	0.5 (0.4, 0.6)	2 (1, 2)	0.4 (0.3, 0.4)	-21.9 (-37.0, -2.7)
<b>Belize</b>	1 (1, 1)	0.8 (0.6, 0.9)	2 (1, 2)	0.6 (0.5, 0.8)	-25.5 (-46.9, 41.1)
<b>Bermuda</b>	0 (0, 1)	0.8 (0.5, 1.0)	0 (0, 1)	0.4 (0.3, 0.5)	-53.3 (-65.4, -12.7)
<b>Cuba</b>	34 (18, 42)	0.3 (0.2, 0.4)	35 (27, 40)	0.2 (0.2, 0.2)	-41.1 (-54.0, -5.4)
<b>Dominica</b>	1 (0, 1)	0.7 (0.6, 0.8)	1 (0, 1)	0.7 (0.6, 0.8)	-9.2 (-28.8, 18.7)
<b>Dominican Republic</b>	12 (8, 15)	0.3 (0.2, 0.3)	19 (14, 30)	0.2 (0.1, 0.3)	-17.9 (-46.9, 46.0)
<b>Grenada</b>	1 (1, 1)	1.3 (1.1, 1.7)	1 (1, 2)	0.9 (0.8, 1.1)	-34.0 (-48.8, -8.6)
<b>Guyana</b>	4 (4, 5)	0.9 (0.8, 1.1)	5 (4, 6)	0.8 (0.7, 0.9)	-18.3 (-31.9, -0.5)
<b>Haiti</b>	41 (15, 94)	1.0 (0.5, 1.8)	68 (42, 95)	1.0 (0.6, 1.4)	-3.3 (-43.5, 72.5)
<b>Jamaica</b>	8 (7, 11)	0.4 (0.3, 0.6)	13 (11, 17)	0.4 (0.4, 0.6)	9.8 (-16.5, 43.2)
<b>Puerto Rico</b>	32 (18, 37)	0.9 (0.5, 1.0)	21 (17, 32)	0.3 (0.3, 0.5)	-63.9 (-73.7, -10.4)
<b>Saint Lucia</b>	1 (1, 1)	0.8 (0.6, 1.0)	1 (1, 1)	0.5 (0.5, 0.7)	-34.0 (-49.2, 7.7)
<b>Saint Vincent and the Grenadines</b>	0 (0, 1)	0.5 (0.3, 1.4)	1 (1, 1)	1.0 (0.8, 1.1)	75.6 (-30.9, 187.8)
<b>Suriname</b>	2 (2, 3)	0.9 (0.7, 1.0)	4 (3, 5)	0.7 (0.6, 0.9)	-22.6 (-38.4, 13.8)
<b>Trinidad and Tobago</b>	3 (2, 4)	0.4 (0.2, 0.4)	4 (3, 6)	0.3 (0.2, 0.3)	-27.1 (-45.0, -2.6)
<b>Virgin Islands</b>	1 (0, 1)	0.7 (0.5, 0.8)	1 (1, 1)	0.4 (0.3, 0.5)	-37.1 (-51.6, -7.5)
<b>Tropical Latin America</b>	450 (376, 480)	0.5 (0.4, 0.5)	1014 (765, 1099)	0.4 (0.3, 0.5)	-3.9 (-23.4, 3.9)
<b>Brazil</b>	446 (371, 475)	0.5 (0.4, 0.5)	1003 (753, 1089)	0.4 (0.3, 0.5)	-4.2 (-23.6, 3.6)
<b>Paraguay</b>	5 (4, 6)	0.2 (0.2, 0.3)	12 (9, 15)	0.2 (0.2, 0.3)	14.8 (-18.7, 50.5)
<b>East Asia</b>	5977 (3954, 6899)	0.8 (0.6, 1.0)	5612 (5225, 6807)	0.3 (0.3, 0.4)	-59.6 (-66.3, -27.3)
<b>China</b>	5701 (3725, 6612)	0.8 (0.6, 1.0)	5199 (4842, 6383)	0.3 (0.3, 0.4)	-60.7 (-67.5, -28.0)
<b>North Korea</b>	80 (55, 103)	0.6 (0.4, 0.8)	126 (92, 165)	0.5 (0.4, 0.7)	-20.4 (-42.1, 7.1)
<b>Taiwan (Province of China)</b>	95 (61, 108)	0.8 (0.5, 1.0)	197 (152, 222)	0.5 (0.4, 0.6)	-39.0 (-47.6, -8.8)
<b>Southeast Asia</b>	1419 (1036, 1709)	0.6 (0.4, 0.7)	1825 (1606, 2160)	0.3 (0.3, 0.4)	-40.0 (-48.8, -14.0)
<b>Cambodia</b>	28 (16, 49)	0.6 (0.4, 0.9)	45 (36, 56)	0.5 (0.4, 0.6)	-28.4 (-51.6, 10.2)
<b>Indonesia</b>	706 (491, 896)	0.8 (0.5, 1.1)	985 (792, 1333)	0.6 (0.4, 0.8)	-30.7 (-44.1, -7.7)
<b>Laos</b>	11 (5, 18)	0.5 (0.3, 0.7)	18 (12, 28)	0.5 (0.3, 0.7)	-7.9 (-46.7, 38.3)
<b>Malaysia</b>	23 (19, 28)	0.3 (0.2, 0.3)	53 (41, 68)	0.2 (0.2, 0.3)	-11.9 (-31.5, 22.0)
<b>Maldives</b>	0 (0, 1)	0.7 (0.4, 1.0)	1 (1, 1)	0.3 (0.2, 0.4)	-55.1 (-72.8, -16.5)
<b>Mauritius</b>	1 (1, 2)	0.2 (0.1, 0.2)	3 (2, 3)	0.2 (0.1, 0.2)	0.7 (-34.8, 27.1)
<b>Myanmar</b>	87 (42, 171)	0.4 (0.2, 0.7)	112 (84, 151)	0.3 (0.2, 0.4)	-26.8 (-54.9, 22.4)

<b>Philippines</b>	234 (136, 311)	0.8 (0.4, 0.9)	189 (141, 345)	0.3 (0.2, 0.5)	-61.3 (-73.9, 10.1)
<b>Sri Lanka</b>	18 (14, 23)	0.2 (0.1, 0.2)	21 (16, 27)	0.1 (0.1, 0.1)	-44.5 (-60.9, -20.7)
<b>Seychelles</b>	0 (0, 0)	0.4 (0.3, 0.4)	0 (0, 0)	0.3 (0.2, 0.3)	-28.8 (-41.4, -11.9)
<b>Thailand</b>	97 (72, 120)	0.2 (0.2, 0.3)	170 (139, 196)	0.2 (0.2, 0.2)	-26.5 (-46.0, 1.4)
<b>East Timor</b>	2 (1, 3)	0.5 (0.3, 0.7)	5 (3, 8)	0.6 (0.3, 1.0)	17.4 (-28.4, 74.9)
<b>Vietnam</b>	209 (124, 290)	0.5 (0.3, 0.7)	221 (179, 267)	0.3 (0.2, 0.3)	-50.6 (-69.3, -20.0)
<b>Oceania</b>	19 (12, 28)	0.6 (0.4, 0.8)	28 (21, 39)	0.4 (0.3, 0.5)	-32.5 (-44.5, -13.4)
<b>American Samoa</b>	0 (0, 1)	1.9 (1.0, 2.5)	0 (0, 0)	0.5 (0.4, 0.8)	-71.8 (-80.5, -27.2)
<b>Federated States of Micronesia</b>	1 (0, 1)	1.2 (0.7, 1.7)	0 (0, 1)	0.6 (0.4, 0.8)	-45.8 (-61.3, -22.2)
<b>Fiji</b>	1 (1, 2)	0.3 (0.3, 0.4)	2 (1, 2)	0.2 (0.2, 0.3)	-26.6 (-44.9, -4.8)
<b>Guam</b>	0 (0, 0)	0.3 (0.2, 0.4)	0 (0, 0)	0.2 (0.2, 0.3)	-39.5 (-57.8, -10.4)
<b>Kiribati</b>	0 (0, 1)	1.0 (0.5, 1.6)	1 (0, 1)	0.8 (0.4, 1.1)	-22.7 (-43.6, 6.3)
<b>Marshall Islands</b>	0 (0, 0)	1.0 (0.6, 1.5)	0 (0, 0)	0.7 (0.5, 1.0)	-28.8 (-47.4, 0.4)
<b>Northern Mariana Islands</b>	0 (0, 0)	1.2 (0.7, 1.6)	0 (0, 0)	0.4 (0.3, 0.6)	-64.1 (-74.6, -20.4)
<b>Papua New Guinea</b>	11 (6, 19)	0.5 (0.3, 0.7)	17 (11, 28)	0.4 (0.3, 0.5)	-28.5 (-46.7, -0.7)
<b>Samoa</b>	1 (0, 1)	0.9 (0.4, 1.3)	1 (0, 1)	0.5 (0.3, 0.8)	-35.8 (-52.1, -7.5)
<b>Solomon Islands</b>	1 (0, 1)	0.6 (0.4, 0.9)	1 (1, 2)	0.4 (0.3, 0.5)	-37.5 (-55.1, -11.3)
<b>Tonga</b>	1 (0, 1)	1.1 (0.7, 1.6)	1 (0, 1)	0.8 (0.6, 1.1)	-30.3 (-47.2, -3.7)
<b>Vanuatu</b>	2 (1, 3)	2.1 (1.0, 3.5)	3 (1, 6)	1.8 (0.8, 3.2)	-15.1 (-48.7, 31.0)
<b>North Africa and Middle East</b>	524 (346, 777)	0.3 (0.2, 0.4)	872 (781, 999)	0.2 (0.2, 0.2)	-25.1 (-41.5, 15.0)
<b>Afghanistan</b>	20 (8, 39)	0.3 (0.1, 0.5)	38 (19, 65)	0.3 (0.2, 0.5)	9.7 (-25.2, 81.9)
<b>Algeria</b>	23 (14, 42)	0.2 (0.1, 0.3)	44 (26, 68)	0.1 (0.1, 0.2)	-26.5 (-44.6, -0.2)
<b>Bahrain</b>	1 (0, 1)	0.2 (0.2, 0.3)	1 (1, 1)	0.2 (0.1, 0.2)	-36.8 (-54.2, -13.9)
<b>Egypt</b>	46 (31, 72)	0.2 (0.1, 0.2)	84 (47, 142)	0.2 (0.1, 0.3)	-6.7 (-44.0, 57.4)
<b>Iran</b>	40 (32, 50)	0.2 (0.1, 0.2)	126 (65, 142)	0.2 (0.1, 0.2)	23.7 (-20.1, 59.2)
<b>Iraq</b>	42 (25, 67)	0.4 (0.3, 0.6)	59 (48, 72)	0.2 (0.2, 0.2)	-50.0 (-69.2, -17.7)
<b>Jordan</b>	5 (4, 9)	0.3 (0.2, 0.5)	13 (9, 16)	0.2 (0.2, 0.3)	-31.5 (-64.6, 15.6)
<b>Kuwait</b>	1 (1, 2)	0.2 (0.1, 0.2)	3 (2, 4)	0.1 (0.1, 0.2)	-22.8 (-48.5, 0.9)
<b>Lebanon</b>	3 (2, 6)	0.1 (0.1, 0.3)	7 (5, 11)	0.1 (0.1, 0.2)	-12.9 (-44.2, 110.5)
<b>Libya</b>	4 (2, 7)	0.2 (0.1, 0.3)	7 (4, 10)	0.2 (0.1, 0.2)	-17.7 (-41.6, 23.2)
<b>Morocco</b>	28 (19, 45)	0.2 (0.1, 0.3)	52 (40, 76)	0.2 (0.1, 0.3)	-10.3 (-32.7, 27.9)

<b>Palestine</b>	3 (2, 4)	0.3 (0.2, 0.4)	4 (3, 6)	0.2 (0.1, 0.2)	-37.7 (-62.7, 6.1)
<b>Oman</b>	1 (1, 2)	0.2 (0.1, 0.3)	2 (2, 3)	0.1 (0.1, 0.2)	-36.2 (-59.3, 5.6)
<b>Qatar</b>	1 (1, 1)	0.6 (0.4, 0.8)	3 (1, 4)	0.3 (0.2, 0.4)	-57.1 (-70.7, -35.9)
<b>Saudi Arabia</b>	11 (7, 15)	0.2 (0.1, 0.2)	17 (10, 26)	0.1 (0.1, 0.2)	-37.8 (-57.3, 3.8)
<b>Sudan</b>	17 (2, 37)	0.2 (0, 0.3)	31 (12, 56)	0.2 (0.1, 0.3)	0.8 (-40.0, 182.4)
<b>Syria</b>	22 (16, 33)	0.4 (0.3, 0.6)	35 (24, 44)	0.3 (0.2, 0.4)	-30.6 (-53.0, 5.5)
<b>Tunisia</b>	8 (5, 13)	0.2 (0.1, 0.3)	16 (11, 23)	0.1 (0.1, 0.2)	-17.2 (-41.0, 24.1)
<b>Turkey</b>	235 (126, 390)	0.6 (0.3, 0.9)	293 (252, 381)	0.3 (0.3, 0.4)	-40.6 (-60.3, 8.8)
<b>United Arab Emirates</b>	1 (0, 2)	0.2 (0.1, 0.3)	7 (4, 11)	0.1 (0.1, 0.2)	-11.1 (-47.0, 108.5)
<b>Yemen</b>	10 (4, 20)	0.2 (0.1, 0.3)	30 (19, 44)	0.2 (0.2, 0.3)	16.6 (-25.5, 102.5)
<b>South Asia</b>	2869 (1889, 4316)	0.5 (0.4, 0.6)	5737 (4634, 6674)	0.5 (0.4, 0.6)	-4.8 (-20.8, 17.8)
<b>Bangladesh</b>	280 (171, 468)	0.5 (0.3, 0.6)	501 (406, 607)	0.4 (0.3, 0.5)	-11.0 (-35.5, 36.9)
<b>Bhutan</b>	2 (1, 2)	0.6 (0.4, 0.9)	3 (2, 5)	0.5 (0.3, 0.8)	-18.3 (-53.2, 30.6)
<b>India</b>	2097 (1324, 3433)	0.4 (0.3, 0.6)	4331 (3392, 5479)	0.4 (0.3, 0.6)	-1.6 (-20.5, 28.4)
<b>Nepal</b>	53 (33, 78)	0.5 (0.4, 0.7)	96 (69, 127)	0.5 (0.4, 0.6)	-9.9 (-41.0, 26.1)
<b>Pakistan</b>	437 (284, 641)	0.8 (0.4, 1.2)	807 (480, 1271)	0.8 (0.4, 1.3)	7.7 (-19.0, 42.9)
<b>Southern sub-Saharan Africa</b>	167 (132, 209)	0.5 (0.4, 0.7)	250 (199, 293)	0.5 (0.4, 0.5)	-14.6 (-30.5, 4.8)
<b>Botswana</b>	4 (3, 6)	0.6 (0.5, 0.9)	6 (4, 9)	0.5 (0.3, 0.6)	-29.7 (-45.7, -5.7)
<b>Lesotho</b>	6 (4, 9)	0.6 (0.4, 0.9)	7 (5, 10)	0.6 (0.4, 0.9)	-3.1 (-34.5, 37.2)
<b>Namibia</b>	6 (4, 8)	0.7 (0.5, 1.0)	10 (5, 15)	0.6 (0.4, 0.9)	-12.8 (-43.1, 26.3)
<b>South Africa</b>	126 (94, 165)	0.5 (0.4, 0.7)	187 (135, 226)	0.4 (0.3, 0.5)	-18.5 (-32.3, 1.7)
<b>Swaziland</b>	2 (1, 3)	0.5 (0.3, 0.7)	3 (2, 4)	0.5 (0.3, 0.6)	-10.0 (-33.1, 34.5)
<b>Zimbabwe</b>	22 (16, 30)	0.4 (0.3, 0.6)	37 (20, 65)	0.5 (0.3, 0.9)	13.8 (-41.9, 73.8)
<b>Western sub-Saharan Africa</b>	593 (255, 1033)	0.5 (0.3, 0.8)	1089 (740, 1448)	0.5 (0.4, 0.8)	-0.6 (-41.0, 64.3)
<b>Benin</b>	14 (5, 28)	0.5 (0.2, 0.8)	25 (17, 34)	0.5 (0.3, 0.7)	-9.1 (-48.4, 98.3)
<b>Burkina Faso</b>	30 (15, 59)	0.6 (0.3, 0.8)	53 (20, 98)	0.5 (0.2, 0.9)	-6.8 (-51.2, 76.6)
<b>Cameroon</b>	29 (12, 50)	0.5 (0.3, 0.9)	59 (26, 93)	0.5 (0.2, 0.8)	-12.4 (-45.5, 54.0)
<b>Cape Verde</b>	1 (1, 1)	0.3 (0.2, 0.4)	1 (1, 1)	0.2 (0.2, 0.3)	-31.4 (-46.8, 13.1)
<b>Chad</b>	23 (11, 40)	0.7 (0.4, 1.0)	37 (23, 57)	0.6 (0.4, 0.7)	-15.2 (-41.3, 27.6)
<b>Cote d'Ivoire</b>	25 (11, 51)	0.5 (0.2, 0.8)	58 (38, 78)	0.5 (0.4, 0.7)	5.1 (-36.5, 101.1)
<b>The Gambia</b>	3 (2, 5)	0.7 (0.4, 1.2)	6 (4, 8)	0.6 (0.4, 0.7)	-20.6 (-43.7, 10.3)

<b>Ghana</b>	36 (17, 70)	0.5 (0.3, 0.8)	61 (27, 121)	0.4 (0.2, 0.7)	-21.8 (-51.1, 56.0)
<b>Guinea</b>	23 (7, 54)	0.5 (0.2, 1.0)	26 (11, 50)	0.4 (0.2, 0.8)	-19.9 (-38.2, 20.8)
<b>Guinea-Bissau</b>	4 (1, 8)	0.7 (0.4, 1.3)	4 (2, 7)	0.5 (0.3, 0.7)	-30.6 (-51.7, 22.8)
<b>Liberia</b>	6 (1, 15)	0.4 (0.1, 0.9)	8 (4, 13)	0.4 (0.2, 0.6)	-13.3 (-46.4, 84.0)
<b>Mali</b>	31 (8, 83)	0.6 (0.2, 1.1)	62 (29, 95)	0.6 (0.3, 1.0)	11.1 (-51.9, 317.3)
<b>Mauritania</b>	7 (4, 10)	0.6 (0.3, 0.8)	11 (7, 17)	0.5 (0.3, 0.8)	-14.1 (-53.8, 40.0)
<b>Niger</b>	33 (11, 80)	0.7 (0.4, 1.1)	54 (24, 90)	0.6 (0.3, 1.0)	-18.0 (-49.4, 34.5)
<b>Nigeria</b>	280 (99, 460)	0.5 (0.2, 0.9)	533 (217, 967)	0.6 (0.2, 1.1)	8.3 (-50.4, 94.7)
<b>Sao Tome and Principe</b>	0 (0, 1)	0.6 (0.3, 1.0)	0 (0, 1)	0.3 (0.2, 0.5)	-44.8 (-65.3, -19.6)
<b>Senegal</b>	26 (13, 43)	0.6 (0.4, 0.9)	50 (30, 77)	0.6 (0.4, 1.0)	1.0 (-36.2, 54.0)
<b>Sierra Leone</b>	13 (3, 33)	0.5 (0.1, 1.0)	21 (10, 37)	0.6 (0.3, 1.0)	17.3 (-45.7, 489.8)
<b>Togo</b>	9 (4, 18)	0.5 (0.3, 0.8)	19 (11, 29)	0.5 (0.3, 0.8)	-0.1 (-44.0, 129.3)
<b>Eastern sub- Saharan Africa</b>	537 (248, 985)	0.6 (0.4, 0.8)	1086 (779, 1619)	0.7 (0.5, 1.0)	5.6 (-38.5, 74.3)
<b>Burundi</b>	14 (5, 32)	0.6 (0.3, 1.0)	28 (11, 53)	0.7 (0.3, 1.3)	21.3 (-40.1, 211.0)
<b>Comoros</b>	2 (1, 4)	0.9 (0.4, 1.5)	3 (2, 6)	0.8 (0.5, 1.4)	-8.2 (-41.1, 40.8)
<b>Djibouti</b>	1 (1, 2)	0.7 (0.4, 1.0)	3 (2, 5)	0.5 (0.3, 0.8)	-19.0 (-46.6, 21.0)
<b>Eritrea</b>	9 (3, 20)	0.7 (0.4, 1.2)	21 (14, 28)	0.9 (0.6, 1.2)	17.7 (-41.8, 121.5)
<b>Ethiopia</b>	128 (42, 300)	0.6 (0.3, 1.0)	245 (173, 331)	0.6 (0.4, 0.8)	-2.5 (-59.0, 96.9)
<b>Kenya</b>	68 (41, 102)	0.8 (0.5, 1.2)	168 (107, 268)	0.8 (0.5, 1.3)	8.3 (-21.0, 56.3)
<b>Madagascar</b>	28 (7, 58)	0.4 (0.1, 0.7)	59 (35, 82)	0.5 (0.4, 0.8)	27.2 (-31.2, 285.4)
<b>Malawi</b>	30 (11, 66)	0.6 (0.3, 0.9)	60 (27, 116)	0.7 (0.3, 1.5)	18.2 (-45.5, 155.4)
<b>Mozambique</b>	60 (28, 110)	0.8 (0.5, 1.1)	96 (48, 179)	0.8 (0.4, 1.4)	-3.0 (-37.7, 64.3)
<b>Rwanda</b>	25 (5, 52)	0.8 (0.2, 1.2)	43 (19, 85)	0.7 (0.3, 1.5)	-2.4 (-55.9, 119.1)
<b>Somalia</b>	19 (5, 53)	0.6 (0.2, 1.2)	43 (21, 71)	0.6 (0.3, 1.0)	7.1 (-38.2, 87.0)
<b>South Sudan</b>	15 (5, 31)	0.6 (0.2, 0.9)	23 (10, 39)	0.5 (0.3, 0.8)	-2.7 (-31.9, 54.8)
<b>Tanzania</b>	66 (35, 119)	0.5 (0.4, 0.7)	163 (84, 284)	0.6 (0.3, 1.1)	16.2 (-31.2, 107.6)
<b>Uganda</b>	42 (11, 81)	0.5 (0.2, 1.1)	86 (41, 162)	0.6 (0.3, 1.2)	9.8 (-37.3, 121.2)
<b>Zambia</b>	30 (17, 54)	0.9 (0.7, 1.1)	44 (36, 54)	0.6 (0.5, 0.8)	-25.5 (-47.6, 5.4)
<b>Central sub- Saharan Africa</b>	183 (77, 345)	0.7 (0.4, 1.1)	377 (197, 563)	0.7 (0.4, 0.9)	-2.1 (-22.0, 29.6)
<b>Angola</b>	34 (6, 90)	0.7 (0.2, 1.4)	69 (32, 106)	0.6 (0.3, 0.9)	-11.9 (-48.9, 88.1)
<b>Central African Republic</b>	11 (4, 22)	0.8 (0.4, 1.4)	18 (9, 34)	0.8 (0.5, 1.3)	-4.1 (-28.3, 37.6)

<b>Congo</b>	8 (3, 16)	0.7 (0.3, 1.1)	16 (7, 24)	0.6 (0.3, 1.0)	-3.1 (-37.3, 59.1)
<b>DR Congo</b>	125 (57, 219)	0.7 (0.4, 1.0)	267 (138, 404)	0.7 (0.4, 1.0)	1.9 (-19.5, 35.5)
<b>Equatorial Guinea</b>	2 (1, 4)	0.8 (0.4, 1.5)	3 (2, 5)	0.6 (0.3, 1.0)	-31.6 (-67.0, 36.2)
<b>Gabon</b>	3 (1, 5)	0.5 (0.2, 0.9)	5 (1, 8)	0.4 (0.1, 0.8)	-10.3 (-42.7, 52.4)

**Appendix table 4: DALYs due to IBD in 1990 and 2017 for both sexes and percentage change in age-standardised rates by location. IBD=inflammatory bowel disease. DALYs=disability-adjusted life-years.**

	1990		2017		Percentage change in age-standardized rates between 1990 and 2017
	Counts (95% UI)	Rate (95% UI)	Counts (95% UI)	Rate (95% UI)	
<b>Global</b>	1247612 (965045, 1608560)	26.5 (21.0, 33.0)	1849068 (1514518, 2225092)	23.2 (19.1, 27.8)	-12.4 (-26.4, -2.6)
<b>High-income North America</b>	204385 (154897, 261521)	64.6 (48.7, 82.8)	357766 (273069, 456621)	79.8 (59.4, 103.0)	23.6 (8.2, 32.7)
<b>Canada</b>	7070 (6039, 8449)	22.8 (19.5, 27.3)	8936 (7628, 10972)	17.5 (14.6, 21.5)	-23.4 (-33.9, -9.2)
<b>Greenland</b>	8 (6, 10)	15.8 (12.4, 19.6)	11 (8, 13)	16.4 (12.4, 20.4)	4.0 (-21.2, 29.5)
<b>USA</b>	197302 (148650, 253707)	69.1 (51.8, 89.2)	348813 (265192, 446786)	86.9 (64.5, 112.4)	25.7 (10.1, 35.2)
<b>Australasia</b>	4004 (3292, 4899)	17.8 (14.6, 21.7)	7131 (5268, 8589)	18.2 (13.6, 22.3)	2.2 (-27.7, 19.4)
<b>Australia</b>	2711 (2255, 3445)	14.5 (12.0, 18.1)	5449 (3856, 6534)	16.0 (11.5, 19.5)	10.4 (-29.5, 33.0)
<b>New Zealand</b>	1293 (943, 1721)	34.6 (25.2, 46.2)	1682 (1197, 2289)	30.5 (21.4, 41.7)	-11.7 (-32.1, 11.8)
<b>High-income Asia-Pacific</b>	26042 (20694, 31226)	13.6 (10.7, 16.2)	24776 (19483, 31967)	8.8 (6.7, 11.4)	-34.9 (-45.7, -8.0)
<b>Brunei</b>	40 (31, 55)	27.2 (21.4, 35.6)	91 (77, 112)	24.2 (20.8, 29.1)	-11.0 (-33.0, 14.6)
<b>Japan</b>	17079 (13639, 20976)	11.3 (9.0, 13.9)	17039 (13362, 21670)	8.8 (6.8, 11.4)	-22.1 (-28.9, -9.2)
<b>Singapore</b>	259 (197, 323)	8.5 (6.5, 10.4)	514 (382, 673)	7.6 (5.6, 9.9)	-10.9 (-26.6, 18.2)
<b>South Korea</b>	8663 (5346, 10373)	27.7 (14.0, 33.7)	7134 (5570, 9708)	10.0 (7.7, 13.6)	-63.9 (-75.0, -9.2)
<b>Western Europe</b>	139539 (115383, 170844)	28.6 (23.4, 35.1)	242379 (174889, 290715)	37.1 (27.7, 45.7)	29.4 (-10.6, 43.8)
<b>Andorra</b>	22 (16, 31)	37.5 (27.1, 51.6)	35 (24, 47)	30.4 (21.1, 41.1)	-19.0 (-39.8, 5.5)
<b>Austria</b>	3051 (2576, 3617)	32.1 (26.9, 38.0)	3017 (2385, 3938)	24.3 (18.8, 31.2)	-24.2 (-37.8, -1.6)
<b>Belgium</b>	2981 (2435, 3712)	23.0 (18.3, 28.9)	4685 (3380, 5682)	26.8 (20.3, 33.1)	16.5 (-16.9, 38.1)
<b>Cyprus</b>	226 (157, 288)	27.9 (19.4, 35.1)	296 (236, 362)	17.8 (14.1, 21.9)	-36.4 (-51.9, -12.4)
<b>Denmark</b>	1428 (1143, 1745)	21.3 (17.0, 26.4)	1788 (1337, 2219)	21.1 (15.9, 26.8)	-1.0 (-27.1, 19)
<b>Finland</b>	1341 (960, 1800)	21.4 (15.5, 28.8)	1538 (1110, 2159)	20.0 (14.0, 29.2)	-6.8 (-31.0, 34.8)
<b>France</b>	17830 (15462, 20760)	23.9 (20.4, 28.1)	28703 (15967, 35022)	26.5 (16.8, 32.6)	11.2 (-31.1, 33.4)
<b>Germany</b>	28997 (23091, 44337)	26.9 (21.4, 40.2)	59568 (39444, 70458)	40.2 (27.8, 48.0)	49.4 (-25.3, 90.8)
<b>Greece</b>	1604 (1231, 2042)	12.8 (9.7, 16.4)	2116 (1623, 2693)	14.0 (10.3, 18.4)	9.4 (-4.9, 28.5)
<b>Iceland</b>	59 (47, 75)	21.7 (17.4, 27.9)	87 (68, 108)	19.8 (15.5, 24.8)	-8.8 (-35.3, 9.5)
<b>Ireland</b>	951 (784, 1145)	24.6 (20.2, 29.7)	1300 (969, 1603)	20.9 (15.7, 26.2)	-15.0 (-36.8, 1.3)
<b>Israel</b>	943 (757, 1174)	19.5 (15.5, 24.3)	1833 (1407, 2264)	18.7 (14.4, 23.3)	-4.0 (-20.8, 13.1)
<b>Italy</b>	14786 (11426, 19086)	20.7 (16.0, 26.7)	28281 (17168, 34739)	27.8 (17.8, 34.9)	34.7 (-20.1, 65.8)

<b>Luxembourg</b>	137 (113, 167)	28.2 (23.1, 34.3)	281 (180, 355)	34.0 (22.4, 43.0)	20.4 (-22.7, 45.6)
<b>Malta</b>	70 (57, 86)	17.1 (14.0, 20.9)	140 (99, 170)	21.3 (15.4, 26.2)	24.4 (-14.2, 46.9)
<b>Netherlands</b>	5920 (5069, 7344)	33.4 (28.7, 40.7)	9615 (6559, 11331)	35.0 (24.9, 42.3)	4.8 (-34.1, 26.0)
<b>Norway</b>	4594 (3142, 6364)	91.9 (62.0, 127)	4077 (2752, 5701)	61.5 (41.5, 87.2)	-33.1 (-51.3, -10.1)
<b>Portugal</b>	2043 (1743, 2435)	16.9 (14.4, 20.3)	4051 (2118, 4956)	21.1 (12.2, 26.1)	25.2 (-33.8, 54.0)
<b>Spain</b>	7594 (6325, 9229)	15.8 (13.2, 19.6)	9918 (7885, 11966)	14.2 (10.9, 17.7)	-10.2 (-29.6, 5.6)
<b>Sweden</b>	3100 (2490, 3794)	26.7 (21.0, 33.2)	2975 (2277, 3882)	21.4 (15.8, 28.7)	-19.8 (-33.0, -0.2)
<b>Switzerland</b>	2157 (1637, 2680)	24.1 (18.5, 30.1)	2880 (2197, 3608)	22.5 (17.0, 28.9)	-6.6 (-22.5, 12.0)
<b>United Kingdom</b>	39572 (31418, 49415)	55.2 (43.1, 69.4)	74946 (56920, 94826)	86.8 (65.0, 111.5)	57.1 (31.4, 72.2)
<b>Southern Latin America</b>	7208 (6050, 8461)	15.0 (12.6, 17.6)	10205 (8427, 12340)	13.6 (11.2, 16.5)	-9.0 (-21.9, 3.7)
<b>Argentina</b>	4659 (3922, 5519)	14.2 (12.0, 16.9)	6487 (5325, 7874)	13.2 (10.8, 16.1)	-7.1 (-21.1, 7.4)
<b>Chile</b>	2073 (1663, 2474)	17.5 (14.1, 20.8)	3013 (2402, 3779)	14.1 (11.3, 17.7)	-19.3 (-31.9, 3.5)
<b>Uruguay</b>	475 (379, 656)	13.5 (10.7, 18.6)	705 (553, 835)	16.2 (12.7, 19.3)	19.8 (-22.0, 46.5)
<b>Eastern Europe</b>	103435 (79989, 127537)	39.3 (30.3, 48.6)	82880 (66636, 99430)	29.0 (23.3, 35.1)	-26.2 (-31.5, -19.1)
<b>Belarus</b>	3929 (3052, 4953)	32.6 (25.2, 41.2)	3759 (2796, 4777)	28.8 (21.1, 36.8)	-11.6 (-24.9, 1.1)
<b>Estonia</b>	770 (618, 940)	42.1 (33.7, 51.6)	478 (374, 596)	25.7 (19.6, 32.6)	-38.8 (-47.6, -23.8)
<b>Latvia</b>	984 (771, 1224)	30.2 (23.7, 37.4)	750 (589, 928)	26.5 (20.5, 33.4)	-12.2 (-26.1, -0.2)
<b>Lithuania</b>	1303 (1014, 1651)	30.3 (23.6, 38.7)	1055 (810, 1323)	25.6 (19.5, 32.6)	-15.6 (-27.9, -4.7)
<b>Moldova</b>	1332 (1056, 1626)	28.9 (22.9, 35.3)	1219 (962, 1494)	25.2 (19.7, 31.1)	-12.9 (-22.9, -3.6)
<b>Russia</b>	75260 (57217, 93250)	43.4 (32.7, 53.9)	57301 (46371, 68631)	28.8 (2.03, 34.7)	-33.6 (-39.8, -26.1)
<b>Ukraine</b>	19856 (15285, 25195)	31.3 (24.0, 40.1)	18318 (14679, 22291)	30.7 (24.2, 37.7)	-1.7 (-15.9, 14.8)
<b>Central Europe</b>	49828 (39622, 60970)	37.2 (30.0, 45.2)	54017 (41986, 67207)	34.4 (26.3, 43.3)	-7.5 (-20.1, -0.2)
<b>Albania</b>	3633 (1183, 4685)	103.7 (42.1, 131.2)	1145 (821, 1545)	36.3 (26.1, 48.1)	-65.0 (-75.4, -6.7)
<b>Bosnia and Herzegovina</b>	1059 (794, 1345)	22.8 (17.1, 28.8)	1098 (820, 1389)	23.1 (17.4, 29.5)	1.1 (-9.7, 13.6)
<b>Bulgaria</b>	2955 (2193, 3952)	28.8 (21.4, 38.2)	2999 (2188, 4008)	31.1 (21.9, 41.8)	8.2 (-10.3, 24.5)
<b>Croatia</b>	2061 (1526, 2649)	35.7 (26.5, 46.4)	2242 (1693, 2865)	37.6 (27.7, 48.8)	5.2 (-15.9, 19.7)
<b>Czech Republic</b>	4874 (3822, 6088)	40.4 (31.5, 50.9)	5670 (4158, 7081)	37.7 (27.8, 47.4)	-6.6 (-30.8, 6.7)
<b>Hungary</b>	3886 (3239, 4915)	31.4 (26.1, 39.4)	3470 (2895, 4110)	25.2 (20.7, 30.4)	-19.8 (-41.4, -9.3)
<b>Macedonia</b>	512 (361, 690)	24.9 (17.7, 33.8)	791 (546, 1085)	28.6 (19.7, 39.3)	14.6 (-0.8, 29.2)
<b>Montenegro</b>	254 (183, 347)	39.4 (28.5, 53)	248 (179, 331)	31.3 (22.4, 42.2)	-20.5 (-29.8, -10.1)
<b>Poland</b>	16165 (12276, 20730)	37.8 (28.7, 48.8)	20153 (15474, 25474)	38.2 (29.2, 49.2)	1.0 (-21.9, 15.9)



<b>Romania</b>	7237 (5606, 9208)	28.9 (22.2, 36.5)	7036 (5376, 8946)	27.2 (20.6, 34.8)	-6.1 (-21.4, 6.8)
<b>Serbia</b>	3776 (2937, 4727)	35.6 (28.1, 44.7)	5014 (3862, 6083)	40.6 (31.5, 50.2)	13.8 (-18.1, 28.0)
<b>Slovakia</b>	2478 (1908, 3190)	43.8 (33.9, 56.3)	3148 (2482, 3857)	44.3 (34.8, 54.7)	1.1 (-23.7, 19.5)
<b>Slovenia</b>	937 (714, 1194)	41.0 (31.2, 52.5)	1002 (758, 1277)	34.1 (25.1, 44.3)	-16.8 (-27.3, -8.4)
<b>Central Asia</b>	12720 (10388, 16690)	19.7 (16.3, 24.3)	13504 (10767, 15938)	15.2 (12.1, 17.8)	-23.1 (-39.9, -11.4)
<b>Armenia</b>	451 (366, 550)	14.0 (11.4, 16.9)	454 (354, 547)	12.4 (9.7, 15.0)	-11.2 (-27.5, 2.7)
<b>Azerbaijan</b>	600 (474, 748)	9.4 (7.5, 11.7)	979 (771, 1219)	9.1 (7.2, 11.3)	-3.9 (-20.1, 14.2)
<b>Georgia</b>	717 (548, 870)	12.0 (9.3, 14.6)	560 (416, 683)	11.5 (8.9, 14.2)	-3.9 (-13.8, 6.6)
<b>Kazakhstan</b>	3658 (2996, 4431)	24.0 (19.8, 28.7)	3814 (2740, 4602)	20.5 (14.7, 24.7)	-14.5 (-39.0, 5.4)
<b>Kyrgyzstan</b>	1079 (568, 1405)	25.7 (15.4, 32.1)	809 (618, 982)	13.5 (10.7, 16.2)	-47.3 (-62.5, -11.4)
<b>Mongolia</b>	585 (300, 1061)	31.1 (17.7, 46.3)	593 (418, 833)	18.8 (13.4, 26.2)	-39.6 (-62.5, -12.8)
<b>Tajikistan</b>	1457 (736, 3077)	23.6 (15.6, 40.5)	1381 (1108, 1693)	16.6 (13.6, 20.1)	-29.5 (-61.1, 8.3)
<b>Turkmenistan</b>	619 (401, 937)	18.9 (13.6, 25.2)	723 (575, 882)	14.9 (12.1, 17.9)	-20.8 (-35.9, -0.9)
<b>Uzbekistan</b>	3555 (2046, 4702)	17.5 (12.6, 21.3)	4192 (3181, 5128)	13.6 (10.7, 16.4)	-22.2 (-39.3, -2.4)
<b>Central Latin America</b>	14785 (13008, 16993)	12.0 (10.6, 13.8)	31188 (23681, 36238)	12.7 (9.7, 14.8)	5.5 (-21.7, 16.8)
<b>Colombia</b>	2945 (2494, 3422)	11.6 (10.0, 13.4)	6083 (4241, 7373)	11.6 (8.0, 14.0)	-0.2 (-31.7, 17.3)
<b>Costa Rica</b>	272 (210, 343)	12.5 (9.7, 15.9)	462 (341, 582)	9.3 (6.9, 11.6)	-25.8 (-40.0, -10.1)
<b>El Salvador</b>	628 (318, 866)	14.3 (8.4, 18.1)	423 (338, 535)	7.3 (5.8, 9.3)	-48.8 (-62.7, -0.5)
<b>Guatemala</b>	644 (392, 1465)	8.7 (6.1, 16.6)	1618 (1041, 2028)	11.4 (7.7, 14.1)	30.5 (-49.5, 100.6)
<b>Honduras</b>	757 (482, 1202)	19.8 (14.2, 26.6)	1502 (997, 2129)	20.3 (13.7, 28.1)	2.4 (-39.7, 54.2)
<b>Mexico</b>	7367 (6552, 8797)	12.1 (10.7, 14.3)	17455 (13185, 20248)	14.4 (10.9, 16.6)	19.0 (-14.1, 32.9)
<b>Nicaragua</b>	188 (147, 242)	7.4 (6.0, 8.9)	389 (291, 493)	7.3 (5.5, 9.3)	-1.7 (-23.5, 19.8)
<b>Panama</b>	391 (317, 499)	18.2 (14.6, 23.9)	949 (581, 1210)	24.6 (14.8, 31.6)	35.2 (-32.3, 93.7)
<b>Venezuela</b>	1593 (1116, 1911)	11.3 (8.1, 13.6)	2307 (1864, 2838)	7.6 (6.2, 9.3)	-32.8 (-45.1, -7.2)
<b>Andean Latin America</b>	11018 (6264, 21547)	26.1 (16.9, 45.7)	5544 (4506, 6596)	9.4 (7.7, 11.0)	-64.2 (-82.1, -42.0)
<b>Bolivia</b>	1640 (530, 4589)	22.2 (9.7, 53.3)	1402 (927, 2018)	12.9 (9.2, 17.7)	-41.9 (-78.8, 52.3)
<b>Ecuador</b>	1183 (880, 1540)	12.1 (9.5, 15.1)	1350 (956, 1625)	8.6 (6.1, 10.4)	-28.8 (-54.3, -6.7)
<b>Peru</b>	8196 (4306, 16681)	33.6 (20.5, 61.4)	2792 (2222, 3485)	8.6 (6.9, 10.6)	-74.6 (-87.8, -53.3)
<b>Caribbean</b>	5917 (4223, 10018)	18.5 (13.8, 29.4)	5969 (4877, 7769)	12.4 (10.0, 16.5)	-33.3 (-50.3, -17.2)
<b>Antigua and Barbuda</b>	13 (9, 14)	22.9 (16.8, 26.5)	13 (11, 16)	13.1 (11.2, 16.7)	-43.0 (-55.0, -10.1)
<b>The Bahamas</b>	47 (37, 56)	21.6 (17.1, 26.0)	63 (55, 74)	16.1 (13.9, 18.8)	-25.6 (-40.3, -7.1)

<b>Barbados</b>	38 (32, 45)	14.1 (12.0, 16.9)	42 (36, 48)	10.6 (9.1, 12.3)	-24.7 (-37.4, -7.9)
<b>Belize</b>	38 (23, 53)	24.5 (16.4, 30.8)	60 (50, 74)	17.8 (14.9, 22.7)	-27.3 (-48.3, 35.4)
<b>Bermuda</b>	15 (11, 18)	23.5 (17.1, 28.7)	10 (8, 13)	10.4 (8.7, 13.7)	-55.5 (-67.0, -25.3)
<b>Cuba</b>	1256 (808, 1526)	11.7 (7.5, 14.2)	998 (761, 1168)	6.2 (4.9, 7.2)	-47.0 (-56.1, -27.2)
<b>Dominica</b>	15 (13, 18)	22.1 (19.1, 26.3)	16 (14, 20)	20.7 (17.8, 25.6)	-6.5 (-26.9, 18.7)
<b>Dominican Republic</b>	553 (368, 885)	8.7 (6.3, 11.9)	701 (530, 1051)	7.1 (5.4, 10.5)	-18.9 (-40.1, 27.2)
<b>Grenada</b>	29 (23, 37)	39.0 (30.8, 50.4)	33 (29, 41)	25.9 (22.6, 31.5)	-33.6 (-50.3, -8.5)
<b>Guyana</b>	183 (148, 213)	30.0 (25.2, 34.2)	168 (142, 197)	24.2 (20.6, 28.2)	-19.3 (-32.4, -2.0)
<b>Haiti</b>	2007 (549, 5812)	34.3 (12.3, 78.9)	2430 (1386, 3931)	26.8 (16.2, 38.4)	-21.8 (-58.3, 67.3)
<b>Jamaica</b>	326 (260, 421)	14.9 (12.4, 18.6)	394 (310, 492)	14.1 (10.9, 17.4)	-5.6 (-28.4, 22.5)
<b>Puerto Rico</b>	929 (537, 1077)	25.5 (14.7, 29.6)	486 (396, 721)	9.6 (7.8, 13.9)	-62.5 (-72.3, -13.8)
<b>Saint Lucia</b>	27 (19, 34)	24.2 (17.5, 30.0)	31 (27, 37)	15.4 (13.5, 18.4)	-36.3 (-50.9, -1.6)
<b>Saint Vincent and the Grenadines</b>	14 (9, 36)	16.4 (10.5, 41.8)	37 (33, 42)	29.4 (25.7, 33.3)	79.4 (-30.6, 192.5)
<b>Suriname</b>	98 (69, 118)	28.9 (21.0, 34.1)	118 (103, 141)	20.2 (17.6, 24.1)	-30.2 (-44.5, 3.0)
<b>Trinidad and Tobago</b>	110 (72, 133)	10.9 (6.9, 13.2)	138 (90, 174)	8.2 (5.4, 10.3)	-25.1 (-42.5, -4.0)
<b>Virgin Islands</b>	18 (14, 21)	18.2 (14.6, 21.1)	16 (14, 21)	11.2 (9.2, 14.3)	-38.5 (-52.3, -12.9)
<b>Tropical Latin America</b>	27268 (23259, 32163)	23.0 (19.6, 27.1)	44620 (35941, 52406)	19.1 (15.3, 22.4)	-17.0 (-29.6, -9.2)
<b>Brazil</b>	26869 (22934, 31655)	23.2 (19.7, 27.4)	43834 (35188, 51386)	19.2 (15.4, 22.6)	-17.1 (-29.9, -9.3)
<b>Paraguay</b>	399 (314, 493)	13.5 (10.4, 16.9)	785 (617, 991)	13.2 (10.4, 16.4)	-2.7 (-18.4, 12.4)
<b>East Asia</b>	362502 (267423, 459808)	33.8 (25.2, 41.5)	524890 (397470, 674531)	27.4 (2.01, 34.7)	-19.1 (-36.1, 3.7)
<b>China</b>	346396 (253846, 440768)	34.0 (25.3, 41.8)	502261 (380117, 646618)	27.5 (21.1, 35.0)	-19.1 (-36.5, 4.3)
<b>North Korea</b>	5262 (4019, 6591)	28.5 (21.9, 35.3)	6364 (4887, 8092)	22.4 (17.3, 28)	-21.6 (-35.4, -5.5)
<b>Taiwan (Province of China)</b>	4804 (3727, 5970)	27.7 (21.3, 33.9)	7809 (5977, 10045)	22.7 (17.3, 29.5)	-17.9 (-30.6, 4.7)
<b>Southeast Asia</b>	54475 (39376, 75926)	15.6 (11.7, 19.5)	63437 (54372, 73751)	10.1 (8.7, 11.8)	-35.1 (-50.4, -13.9)
<b>Cambodia</b>	1141 (576, 2359)	16.2 (9.9, 26.9)	1593 (1252, 1942)	12.2 (9.7, 14.7)	-24.7 (-55.8, 24.8)
<b>Indonesia</b>	24652 (16116, 37090)	19.4 (13.6, 25.4)	29848 (24367, 37879)	13.3 (10.9, 17.1)	-31.2 (-50.2, -8.3)
<b>Laos</b>	448 (192, 937)	14.5 (7.4, 24.5)	699 (474, 953)	13.2 (9.1, 18.7)	-9.0 (-51.6, 51.2)
<b>Malaysia</b>	1048 (842, 1288)	8.3 (6.8, 9.8)	2246 (1813, 2717)	7.8 (6.4, 9.5)	-5.1 (-21.2, 21.4)
<b>Maldives</b>	20 (10, 40)	15.3 (9.2, 25.1)	32 (25, 42)	8.7 (6.7, 10.8)	-42.8 (-70.4, 3.8)
<b>Mauritius</b>	87 (68, 110)	9.1 (7.2, 11.5)	120 (86, 151)	7.9 (5.5, 9.9)	-13.8 (-37.9, 5.6)
<b>Myanmar</b>	3807 (1784, 8154)	11.6 (6.1, 22.3)	4582 (3506, 5682)	9.3 (7.2, 11.6)	-20.4 (-55.9, 40.4)

<b>Philippines</b>	10519 (5836, 16205)	20.6 (12.8, 27.6)	7972 (6140, 12965)	9.1 (7.1, 14.7)	-55.7 (-71.6, 3.5)
<b>Sri Lanka</b>	844 (630, 1128)	6.0 (4.7, 7.7)	1072 (836, 1346)	4.5 (3.5, 5.6)	-25.2 (-46.7, -1.9)
<b>Seychelles</b>	8 (6, 9)	12.4 (9.8, 14.8)	10 (8, 13)	9.0 (7.3, 11.2)	-27.7 (-38.4, -13.8)
<b>Thailand</b>	4602 (3411, 5697)	9.2 (7.0, 11.1)	6542 (5351, 7719)	7.3 (6.0, 8.5)	-21.1 (-37.9, 5.5)
<b>East Timor</b>	83 (43, 155)	15.6 (9.6, 20.6)	158 (94, 237)	17.1 (10.0, 26.1)	9.7 (-44.0, 80.0)
<b>Vietnam</b>	7146 (5009, 8882)	14.6 (9.9, 18.5)	8478 (6985, 10270)	8.8 (7.2, 10.5)	-39.7 (-54.4, -15.8)
<b>Oceania</b>	861 (548, 1428)	19.1 (12.9, 27.6)	1415 (1040, 2009)	14.9 (11.5, 19.5)	-21.9 (-39.4, 2.3)
<b>American Samoa</b>	16 (10, 19)	49.9 (30.0, 62.8)	9 (7, 11)	17.8 (14.6, 23.7)	-64.4 (-73.5, -24.4)
<b>Federated States of Micronesia</b>	19 (11, 28)	29.9 (18.1, 40.7)	16 (10, 22)	19.3 (1.03, 25.9)	-35.6 (-54.3, -7.6)
<b>Fiji</b>	57 (46, 70)	10.7 (8.8, 12.9)	85 (69, 104)	10.1 (8.2, 12.2)	-5.9 (-25.2, 17.3)
<b>Guam</b>	17 (13, 22)	15.8 (12.3, 20.0)	18 (14, 23)	10.1 (7.9, 12.8)	-36.0 (-49.6, -18.5)
<b>Kiribati</b>	16 (6, 32)	29.5 (13.6, 50.7)	20 (11, 36)	23.5 (12.9, 37.0)	-20.5 (-41.5, 12.1)
<b>Marshall Islands</b>	6 (4, 12)	26.0 (16.1, 43.9)	8 (5, 13)	19.9 (13.5, 29.7)	-23.3 (-42.3, 8.8)
<b>Northern Mariana Islands</b>	12 (8, 15)	35.8 (24.9, 44.7)	8 (6, 10)	14.8 (12.1, 19.0)	-58.7 (-69.2, -27.3)
<b>Papua New Guinea</b>	522 (282, 1007)	17.2 (10.7, 28.8)	957 (628, 1523)	13.9 (9.8, 20.0)	-19.6 (-43.3, 15.6)
<b>Samoa</b>	25 (13, 35)	23.9 (12.9, 34.3)	27 (18, 40)	17.6 (11.5, 25.2)	-26.4 (-46.9, 2.0)
<b>Solomon Islands</b>	35 (21, 62)	17.4 (10.9, 27.6)	58 (42, 78)	13.1 (9.8, 17.0)	-25.1 (-48.8, 8.7)
<b>Tonga</b>	20 (14, 26)	30.0 (20.9, 40.0)	21 (16, 27)	23.6 (18.2, 31.4)	-21.3 (-38.4, 4.8)
<b>Vanuatu</b>	60 (28, 99)	63.3 (29.3, 105.4)	111 (54, 192)	53.6 (26.1, 92.7)	-15.4 (-48.0, 32.2)
<b>North Africa and Middle East</b>	29305 (20321, 44059)	11.3 (8.2, 15.9)	53148 (43636, 64294)	10.0 (8.3, 11.9)	-12.1 (-35.4, 16.7)
<b>Afghanistan</b>	765 (330, 1568)	9.8 (4.5, 19.2)	2101 (1264, 3484)	11.5 (7.1, 18.3)	17.2 (-22.4, 100.2)
<b>Algeria</b>	1353 (982, 1943)	8.0 (5.7, 11.5)	3108 (2203, 4253)	8 (5.7, 10.9)	0.1 (-21.3, 22.0)
<b>Bahrain</b>	46 (35, 61)	11.5 (9.0, 14.4)	125 (89, 167)	7.9 (6.0, 10.1)	-31.4 (-42.6, -18.2)
<b>Egypt</b>	3035 (2109, 4666)	7.3 (5.4, 10.5)	6531 (4522, 9090)	8.1 (5.6, 11.3)	10.3 (-16.3, 49.7)
<b>Iran</b>	2998 (2303, 3800)	7.6 (6.0, 9.4)	7116 (5201, 8787)	8.6 (6.2, 10.5)	13.8 (-8.3, 32.9)
<b>Iraq</b>	2429 (1365, 4003)	16.5 (10.7, 25.2)	4344 (3168, 5580)	11.3 (9.0, 14)	-31.7 (-59.0, 9.5)
<b>Jordan</b>	346 (240, 500)	14.6 (10.3, 21.1)	881 (673, 1129)	10.3 (7.9, 12.9)	-29.7 (-57.4, -2.6)
<b>Kuwait</b>	140 (110, 177)	9.4 (7.5, 11.5)	360 (266, 483)	8.1 (6.1, 10.5)	-13.2 (-28.7, 3.5)
<b>Lebanon</b>	180 (125, 264)	6.0 (4.2, 9.0)	438 (334, 569)	5.8 (4.4, 7.5)	-3.7 (-31.5, 46.9)
<b>Libya</b>	212 (154, 303)	7.7 (5.6, 11.1)	416 (292, 545)	6.7 (4.8, 8.8)	-13.0 (-32.7, 10.3)
<b>Morocco</b>	1406 (1001, 2059)	7.7 (5.5, 11.1)	3012 (2290, 3940)	8.6 (6.6, 11.2)	12.7 (-9.8, 42.9)

<b>Palestine</b>	145 (95, 214)	11.7 (8.0, 16.3)	308 (232, 409)	8.8 (6.8, 11.4)	-24.5 (-48.8, 3.4)
<b>Oman</b>	107 (74, 152)	8.5 (6.0, 11.8)	284 (201, 393)	6.9 (5.1, 9.1)	-18.6 (-39.6, 9.8)
<b>Qatar</b>	62 (46, 80)	20.5 (15.4, 25.1)	309 (201, 464)	12.6 (9.0, 17.5)	-38.5 (-57.9, -13.1)
<b>Saudi Arabia</b>	833 (610, 1095)	7.7 (5.7, 9.9)	2126 (1558, 2935)	6.4 (4.7, 8.6)	-17.0 (-34.8, 10.0)
<b>Sudan</b>	916 (333, 2031)	6.5 (2.4, 12.0)	2093 (1279, 2956)	7.7 (4.7, 11.0)	19.9 (-27.3, 114.5)
<b>Syria</b>	1089 (766, 1582)	14.3 (10.4, 19.5)	1675 (1245, 2108)	11.4 (8.2, 14.2)	-20.3 (-45.6, 11.1)
<b>Tunisia</b>	510 (367, 710)	7.9 (5.7, 11.0)	1017 (731, 1361)	8.1 (5.9, 10.8)	2.4 (-17.2, 28.8)
<b>Turkey</b>	12049 (7015, 21920)	23.7 (14.3, 39.8)	14218 (11814, 17042)	16.8 (14.0, 20.0)	-29.5 (-58.4, 18.0)
<b>United Arab Emirates</b>	126 (84, 189)	8.8 (5.9, 13.1)	881 (585, 1327)	7.9 (5.6, 10.7)	-10.1 (-35.5, 27.0)
<b>Yemen</b>	537 (276, 1004)	6.8 (3.8, 11.3)	1755 (1244, 2392)	9.1 (6.6, 12.2)	33.0 (-14.4, 107.4)
<b>South Asia</b>	124731 (76459, 212020)	14.6 (9.9, 21.9)	208064 (168173, 245342)	13.5 (11.0, 15.8)	-7.5 (-31.9, 22.3)
<b>Bangladesh</b>	13796 (7309, 28740)	15.6 (10.3, 24.6)	19030 (15586, 22968)	13.5 (11.2, 16.2)	-13.3 (-49.0, 42.7)
<b>Bhutan</b>	67 (40, 108)	17.7 (11.9, 23.2)	107 (66, 153)	13.9 (8.6, 19.9)	-13.9 (-57.6, 28.0)
<b>India</b>	93715 (55825, 166147)	13.7 (9.0, 22.0)	156388 (122074, 196066)	12.8 (10.1, 16.0)	-6.6 (-31.6, 28.9)
<b>Nepal</b>	2183 (1241, 3896)	15.8 (10.2, 23.2)	3117 (2282, 4033)	12.8 (9.5, 16.7)	-18.9 (-53.4, 22.5)
<b>Pakistan</b>	14971 (10225, 19458)	20.1 (14.1, 27.8)	29422 (21097, 41691)	19.8 (12.9, 29.2)	-1.5 (-27.1, 29.9)
<b>Southern sub-Saharan Africa</b>	7464 (5998, 8680)	17.8 (14.4, 21.3)	9609 (7498, 11437)	14.1 (11.2, 16.7)	-20.5 (-33.4, -1.9)
<b>Botswana</b>	194 (125, 278)	20.5 (13.7, 29.0)	260 (151, 379)	13.8 (8.7, 19.3)	-32.6 (-48.3, -10.2)
<b>Lesotho</b>	244 (165, 352)	18.4 (12.4, 26.8)	262 (177, 376)	17.0 (11.4, 24.7)	-7.1 (-37.8, 31.5)
<b>Namibia</b>	227 (166, 303)	21.6 (16.2, 28.7)	370 (196, 586)	19.2 (10.8, 29.9)	-11.5 (-47.4, 33.2)
<b>South Africa</b>	5632 (4285, 6644)	18.5 (14.3, 22.6)	6921 (4888, 8697)	13.7 (9.7, 17.1)	-25.6 (-44.3, -6.6)
<b>Swaziland</b>	91 (59, 135)	15.9 (10.7, 21.7)	124 (91, 166)	14.1 (10.1, 18.8)	-11.0 (-34.3, 28.5)
<b>Zimbabwe</b>	1076 (757, 1534)	14.2 (10.9, 18.3)	1672 (962, 2779)	15.1 (8.6, 25.4)	6.6 (-43.4, 60.5)
<b>Western sub-Saharan Africa</b>	27444 (10137, 61485)	17.0 (8.0, 28.9)	46246 (29571, 65815)	15.8 (11.2, 20.6)	-7.5 (-48.3, 60.3)
<b>Benin</b>	640 (213, 1640)	16.2 (6.9, 30.6)	1052 (704, 1599)	14.0 (10.1, 19.1)	-13.4 (-54.1, 85.4)
<b>Burkina Faso</b>	1432 (544, 3502)	17.5 (9.1, 32.2)	2341 (917, 4463)	15.9 (6.9, 28.2)	-9.1 (-48.3, 79.1)
<b>Cameroon</b>	1290 (514, 2759)	16.7 (8.1, 27.7)	2444 (1176, 3709)	13.9 (.07, 21.2)	-16.4 (-49.9, 49.9)
<b>Cape Verde</b>	38 (25, 52)	13.7 (9.5, 17.3)	43 (35, 51)	8.7 (7.1, 10.4)	-36.5 (-50.8, -11.5)
<b>Chad</b>	952 (374, 2146)	20.0 (10.0, 33.5)	1658 (922, 3165)	16.8 (11.3, 23.7)	-15.7 (-40.6, 30.5)
<b>Cote d'Ivoire</b>	1259 (517, 2819)	14.7 (7.3, 27.3)	2487 (1602, 3621)	15.0 (10.4, 19.7)	1.9 (-38.0, 87.0)
<b>The Gambia</b>	141 (72, 268)	21.1 (12.8, 34.0)	221 (156, 305)	16.2 (11.7, 21.0)	-23.5 (-46.4, 9.7)

<b>Ghana</b>	1589 (702, 3441)	14.7 (7.6, 27.5)	2491 (1292, 4702)	11.5 (6.0, 21.3)	-21.9 (-52.1, 54.8)
<b>Guinea</b>	1121 (262, 3298)	18.3 (6.0, 42.1)	1094 (466, 2311)	13.1 (6.2, 24.2)	-28.2 (-48.3, 22.8)
<b>Guinea-Bissau</b>	172 (56, 482)	21.8 (9.8, 47.5)	178 (98, 317)	14.6 (8.7, 23.4)	-33.0 (-57.0, 29.3)
<b>Liberia</b>	305 (67, 883)	15.2 (4.4, 36.3)	374 (180, 612)	11.6 (5.8, 17.2)	-24.1 (-60.4, 76.7)
<b>Mali</b>	1689 (321, 5342)	19.5 (5.5, 48.3)	2854 (1178, 5724)	19.2 (9.9, 29.0)	-1.3 (-56.7, 276.4)
<b>Mauritania</b>	263 (133, 449)	17.7 (9.9, 25.9)	413 (257, 595)	15.4 (9.5, 22.5)	-13.4 (-54.3, 41.4)
<b>Niger</b>	1837 (435, 5802)	24.7 (10.3, 52.1)	2481 (1031, 4929)	18.3 (9.4, 29.2)	-25.9 (-61.4, 41.0)
<b>Nigeria</b>	12454 (4060, 27553)	16.4 (6.5, 27.2)	22591 (10234, 35856)	16.3 (7.6, 28.4)	-0.8 (-54.7, 87.1)
<b>Sao Tome and Principe</b>	21 (8, 45)	20.3 (8.8, 33.9)	17 (10, 24)	10.9 (6.6, 15.3)	-46.4 (-63.6, -15.7)
<b>Senegal</b>	1142 (489, 2461)	19.5 (10.6, 30.9)	1839 (1166, 2747)	18.6 (12.0, 28.3)	-4.8 (-47.1, 54.3)
<b>Sierra Leone</b>	646 (122, 2000)	16.9 (4.3, 43.5)	889 (419, 1584)	16.6 (8.7, 27.8)	-1.9 (-56.3, 347.1)
<b>Togo</b>	452 (176, 1081)	16.4 (8.2, 29.6)	779 (482, 1170)	15.4 (9.7, 22.4)	-6.1 (-50.1, 110.4)
<b>Eastern sub-Saharan Africa</b>	25963 (9701, 58842)	17.6 (9.1, 30.0)	45464 (30913, 68543)	17.6 (13.0, 25.7)	0.0 (-47.6, 76.7)
<b>Burundi</b>	704 (216, 1934)	15.8 (6.7, 34.0)	1228 (475, 2253)	17.8 (7.9, 32.3)	12.9 (-46.9, 230.6)
<b>Comoros</b>	83 (35, 167)	24.7 (11.7, 45.6)	120 (78, 202)	21.4 (13.9, 36.0)	-13.6 (-47.9, 38.3)
<b>Djibouti</b>	65 (28, 128)	19.4 (10.5, 29.0)	124 (77, 179)	15.1 (9.6, 22.0)	-22.4 (-53.9, 22.8)
<b>Eritrea</b>	454 (143, 1211)	21.8 (9.6, 44.5)	949 (623, 1295)	24.3 (17.1, 32.3)	11.3 (-47.6, 130.5)
<b>Ethiopia</b>	6606 (1869, 17916)	16.8 (7.0, 34.8)	10182 (7814, 13140)	15.4 (11.2, 20.5)	-8.2 (-64.9, 114.2)
<b>Kenya</b>	2829 (1569, 4055)	20.1 (12.6, 29.1)	6186 (4329, 9480)	20.7 (13.8, 32.2)	3.2 (-27.6, 48.1)
<b>Madagascar</b>	1426 (409, 3419)	14.1 (4.9, 27.8)	2658 (1549, 3999)	15.3 (9.8, 20.7)	8.9 (-42.2, 191.1)
<b>Malawi</b>	1477 (333, 4396)	17.6 (6.9, 36.6)	2286 (1053, 4166)	19.8 (9.3, 37.7)	12.4 (-58.9, 200.5)
<b>Mozambique</b>	2844 (1038, 7032)	24.5 (12.2, 42.0)	4215 (2181, 8227)	22.1 (11.7, 39.8)	-9.7 (-47.4, 61.5)
<b>Rwanda</b>	1168 (209, 3035)	20.5 (5.1, 40.5)	1705 (785, 3283)	19.6 (9.4, 37.6)	-4.6 (-62.6, 147.8)
<b>Somalia</b>	1026 (200, 3295)	17.6 (5.6, 43.7)	2042 (1014, 3599)	17.8 (9.5, 28.0)	1.1 (-50.2, 125.3)
<b>South Sudan</b>	667 (183, 1718)	15.6 (5.8, 31.5)	1115 (459, 2171)	15.8 (7.6, 25.1)	1.1 (-33.6, 73.2)
<b>Tanzania</b>	3164 (1242, 7494)	15.1 (8.7, 25.5)	6964 (3575, 11682)	17.3 (9.6, 29.0)	15.0 (-39.1, 115.4)
<b>Uganda</b>	2028 (448, 5231)	14.7 (4.8, 26.7)	3689 (1826, 6459)	15.5 (8.1, 28.8)	5.7 (-48.8, 123.5)
<b>Zambia</b>	1411 (582, 3403)	23.7 (15.1, 39.1)	1973 (1449, 2770)	16.9 (14.0, 20.2)	-28.7 (-58.2, 15.3)
<b>Central sub-Saharan Africa</b>	8718 (3250, 18723)	20.7 (9.6, 37.0)	16817 (8461, 26581)	19.7 (10.9, 28.7)	-5.1 (-31.1, 35.1)
<b>Angola</b>	1777 (323, 5316)	21.3 (5.2, 51.7)	3238 (1600, 4994)	17.0 (8.6, 25.3)	-20.0 (-59.1, 96.9)
<b>Central African Republic</b>	502 (174, 1146)	25.2 (10.7, 48.9)	781 (337, 1600)	23.7 (12.0, 44.0)	-5.8 (-29.2, 38.0)

<b>Congo</b>	362 (145, 761)	19.7 (8.9, 37.3)	622 (315, 966)	17.4 (9.0, 26.5)	-11.3 (-45.5, 53.9)
<b>DR Congo</b>	5878 (2441, 11907)	20.4 (10.4, 33.8)	11876 (5757, 19258)	20.7 (11.3, 30.8)	1.2 (-22.2, 40.4)
<b>Equatorial Guinea</b>	79 (25, 190)	24.7 (10.0, 50.6)	128 (69, 221)	15.9 (8.8, 27.4)	-35.8 (-73.2, 42.7)
<b>Gabon</b>	120 (49, 211)	15.1 (6.1, 25.9)	172 (77, 282)	12.7 (5.3, 21.3)	-15.6 (-48.6, 36.8)