



# C-Reactive Protein in Atherothrombosis and Angiogenesis

Lina Badimon<sup>1,2\*</sup>, Esther Peña<sup>1,2</sup>, Gemma Arderiu<sup>1</sup>, Teresa Padró<sup>1,2</sup>, Mark Slevin<sup>3</sup>, Gemma Vilahur<sup>1,2</sup> and Gemma Chiva-Blanch<sup>1</sup>

<sup>1</sup>Cardiovascular Science Institute – ICCV, IIB-Sant Pau, Hospital de Sant Pau, Barcelona, Spain, <sup>2</sup>CiberCV, Instituto Carlos III, Madrid, Spain, <sup>3</sup>School of Healthcare Science, Manchester Metropolitan University, Manchester, United Kingdom

## OPEN ACCESS

### Edited by:

Olivier Garraud,  
Institut National de la Transfusion  
Sanguine, France

### Reviewed by:

Beate E. Kehrel,  
University Hospital Muenster,  
Germany  
Hugo Caire Castro-Faria-Neto,  
Fundação Oswaldo  
Cruz (Fiocruz), Brazil

### \*Correspondence:

Lina Badimon  
lbadimon@santpau.cat

### Specialty section:

This article was submitted to  
Inflammation,  
a section of the journal  
Frontiers in Immunology

**Received:** 21 November 2017

**Accepted:** 16 February 2018

**Published:** 02 March 2018

### Citation:

Badimon L, Peña E, Arderiu G,  
Padró T, Slevin M, Vilahur G and  
Chiva-Blanch G (2018) C-Reactive  
Protein in Atherothrombosis  
and Angiogenesis.  
*Front. Immunol.* 9:430.  
doi: 10.3389/fimmu.2018.00430

C-reactive protein (CRP) is a short pentraxin mainly found as a pentamer in the circulation, or as non-soluble monomers CRP (mCRP) in tissues, exerting different functions. This review is focused on discussing the role of CRP in cardiovascular disease, including recent advances on the implication of CRP and its forms specifically on the pathogenesis of atherothrombosis and angiogenesis. Besides its role in the humoral innate immune response, CRP contributes to cardiovascular disease progression by recognizing and binding multiple intrinsic ligands. mCRP is not present in the healthy vessel wall but it becomes detectable in the early stages of atherogenesis and accumulates during the progression of atherosclerosis. CRP inhibits endothelial nitric oxide production and contributes to plaque instability by increasing endothelial cell adhesion molecules expression, by promoting monocyte recruitment into the atheromatous plaque and by enzymatically binding to modified low-density lipoprotein. CRP also contributes to thrombosis, but depending on its form it elicits different actions. Pentameric CRP has no involvement in thrombogenesis, whereas mCRP induces platelet activation and thrombus growth. In addition, mCRP has apparently contradictory pro-angiogenic and anti-angiogenic effects determining tissue remodeling in the atherosclerotic plaque and in infarcted tissues. Overall, CRP contributes to cardiovascular disease by several mechanisms that deserve an in-depth analysis.

**Keywords:** c-reactive protein, pentameric C-reactive protein, monomeric C-reactive protein, atherosclerosis, thrombosis, angiogenesis, ischemic heart disease, cardiovascular disease

## INTRODUCTION

C-reactive protein (CRP) is a short pentraxin belonging to the highly conserved family of calcium-dependent ligand-binding plasma proteins of the superfamily of soluble pattern-recognition molecules, and it is mainly found as a pentamer in the circulation. It is synthesized in the liver induced by interleukin (IL)-6 (1), IL-1 $\beta$ , and tumor necrosis factor (TNF) (2), although other tissues such as adipose tissue may be able to synthesize CRP under pro-inflammatory stimuli (3). The native circulating form of CRP is pentameric (pCRP), that is a disc of five identical subunits non-covalently bounded around a central pore (4). When pCRP binds to one of its ligands [for instance lysophosphatidylcholine *via* activation of phospholipase A2 (5) or in denaturing or oxidative environment (6)] it dissociates in a non-reversible manner into its non-soluble monomers, leading to a potential functional activation (7). pCRP and monomeric CRP (mCRP) are shown to exhibit different functions, although the specific physiopathological functions of CRP are still unknown and are a focus of intense research. It is believed that mCRP is involved in the innate immune system by

activating the complement cascade (8), in angiogenesis (9) and in thrombosis (10), whereas pCRP is mostly released to the circulation after an inflammatory stimuli (1).

CVD is mainly caused by atherosclerosis, which starts from lipid infiltration in the vessel wall, endothelial dysfunction, and chronic low-grade inflammation causing plaque development that ends with clinical ischemic complications. Levels of pCRP in serum  $\geq 3$   $\mu\text{g}/\text{mL}$  are used in the clinical setting as unspecific marker for inflammation, infection, and tissue injury, associated with an acute-phase response (11). Indeed, CRP is considered a predictor of future cardiovascular events (12), and in current guidelines is classified as Class III B level of evidence (13), although there are some discrepancies (14). CRP is a downstream biomarker of elevated IL-1, IL-6, and TNF- $\alpha$ . It can increase 10,000-fold within 6 h and has a half-life of 19 h, and its catabolic rate is independent of its plasma concentration (15). Besides its role in humoral innate immune response, CRP recognizes and binds multiple intrinsic ligands, such as the complement system, resulting in a significant increase in infarct size, cell receptors, apoptotic cells, growth factors, and extracellular matrix components, and thus contributing to cardiovascular disease progression. On those grounds, we aimed to highlight the implication of CRP and its forms on the pathogenesis of atherothrombosis and angiogenesis.

## CRP IN ATHEROTHROMBOSIS

Atherothrombosis is a complex inflammatory pathological process initiated by lipid deposition in the arterial wall with a subsequent recruitment of circulating leukocytes. The growing atheromatous plaque may become unstable and rupture, triggering the formation of a thrombus by accumulation of platelets and coagulation proteins. Occlusive thrombi may eventually induce an ischemic event (16). In this process, inflammation has a pivotal role in all phases, and CRP actively participates by activating the complement system, and inducing apoptosis, vascular cell activation, leukocyte recruitment, lipid accumulation, platelet aggregation, and finally thrombosis (17). mCRP is detectable in the vessel wall in early stages of atherogenesis but not in healthy vessels, and accumulates during the progression of atherosclerosis, whereas pCRP is not detectable in healthy or atherosclerotic vessels (18). In this context, complement activation by enzymatically modified low-density lipoprotein (LDL) plays an important role in atherogenesis (19). Enzymatic modification of LDL confers the capacity to bind pCRP, and CRP-binding enhances complement activation through C3 cleavage (20). Both pCRP and mCRP are able to activate and amplify the classical pathway of the complement system by interacting with the complement factor C1q, significantly activating C1. Only mCRP is able to interact with complement factor H and C4b-binding protein (21), thus provoking local inflammatory responses and contributing to the establishment and progression of atherosclerosis or to the tissue damage following myocardial infarction. In addition, pCRP can promote inflammation by binding to modified or oxidized LDL and (non) oxidized phosphatidylcholine from apoptotic cells (22), promoting the transformation from macrophages to foam cells.

C-reactive protein contributes to endothelial dysfunction and hypertension by inhibiting nitric oxide (23), increasing endothelin-1 production, and thus impairing endothelial-dependent vascular relaxation (24). In the setting of chronic local inflammation in atherosclerosis, the addition of mCRP to apical but not basolateral surfaces of intact human coronary artery endothelial cell monolayers, upregulated monocyte chemotactic protein (MCP)-1, IL-8, and IL-6 expression and activated endothelial cells through the polarized induction of phospholipase C, p38 mitogen-activated protein kinase, and nuclear factor (NF)- $\kappa\text{B}$  signaling pathways (25). Therefore, tissue-associated mCRP induces endothelial cell activation and dysfunction, and spatial localization is determinant for the highly context-dependent actions of CRP isoforms within vessels.

In addition, pCRP contributes to plaque instability by activating NF- $\kappa\text{B}$  and, therefore, increasing endothelial cell adhesion molecules expression such as vascular cellular adhesion molecule-1, vascular E-selectin, and MCP-1 (26, 27). pCRP also induces monocyte polarization to M1 and conversion from M2 to M1 phenotype (2), thus promoting monocyte recruitment into the plaque. Indeed, circulating pCRP binds to the cell membrane of activated, but not resting monocytes (28), and activated but not resting platelets and apoptotic leukocytes are able to dissociate pCRP to mCRP *via* lysophosphatidylcholine inducing reactive oxygen species (ROS) production and monocyte chemotaxis, activation and adhesion (18), being mCRP and not pCRP the responsible of these effects, even at low concentrations. In neutrophils, mCRP but not pCRP increases IL-8, CD11b/CD18, and superoxide production, and induces endothelial nitric oxide synthase-mediated nitric oxide formation. This leads to enhanced peroxynitrite formation, and to the activation of NF- $\kappa\text{B}$  and activator protein (AP)-1 (29), as well as enhanced neutrophil adhesion to activated endothelial cells (30), thus aggravating the inflammatory response at injured vascular sites and contributing to plaque destabilization. Overall, mCRP is able to aggravate the preexisting inflammatory response by inducing leukocyte rolling, adhesion, and transmigration to the endothelium and generation of ROS (5), which in turn, modifies the structure and ligand recognition function of CRP (31).

In addition, CRP also contributes to plaque instability by inducing the expression of metalloproteinases (MMP) 1, 2, and 9 (32, 33). On those grounds, CRP mRNA was detected in potentially vulnerable ulcerated carotid artery plaques but not in hemorrhagic ulcerated plaques independently of the circulating levels of CRP. In non-complicated ulcerated carotid artery plaques, CRP was mainly localized in infiltrated and endothelial cells around areas of newly formed microvessels (34), potentially contributing to plaque neovascularization and rupture resulting in thrombosis.

C-reactive protein also contributes to thrombosis, but depending on its form it elicits different actions. CRP at 10–100 mg/L is able to increase 75-fold tissue factor (TF) procoagulant activity of monocytes, with a parallel increase in TF antigen levels (35). CRP at 2–24 mg/L activates both inflammation and coagulation through increasing circulating levels of E-selectin, von Willebrand factor, IL-6, IL-8, serum amyloid A protein, type II secretory phospholipase A<sub>2</sub>, prothrombin F1 +2, D-dimer, and

plasminogen activator inhibitor type-1 (36). It has been shown that circulating microvesicles can bind pCRP and dissociate it to mCRP, and patients with myocardial infarction have circulating microvesicles carrying mCRP (37). In addition, pCRP binding to activated cell-derived microvesicles also undergoes a structural change leading to the expression of neoepitopes without disrupting the pentameric symmetry activating the classical complement pathway through C1q binding and enhancing leukocyte recruitment to inflamed tissues (28). pCRP has no involvement in thrombogenesis, whereas mCRP is able to promote thrombosis by inducing platelet activation (38), platelet adhesion by upregulating P-selectin (10), and thrombus growth (39). Additionally, mCRP has been found in platelet aggregates and stimulates further platelet deposition (38). Blocking glycoprotein IIb-IIIa on activated platelets prevented the dissociation of pCRP to mCRP and reduced platelet deposition at the arterial wall (38).

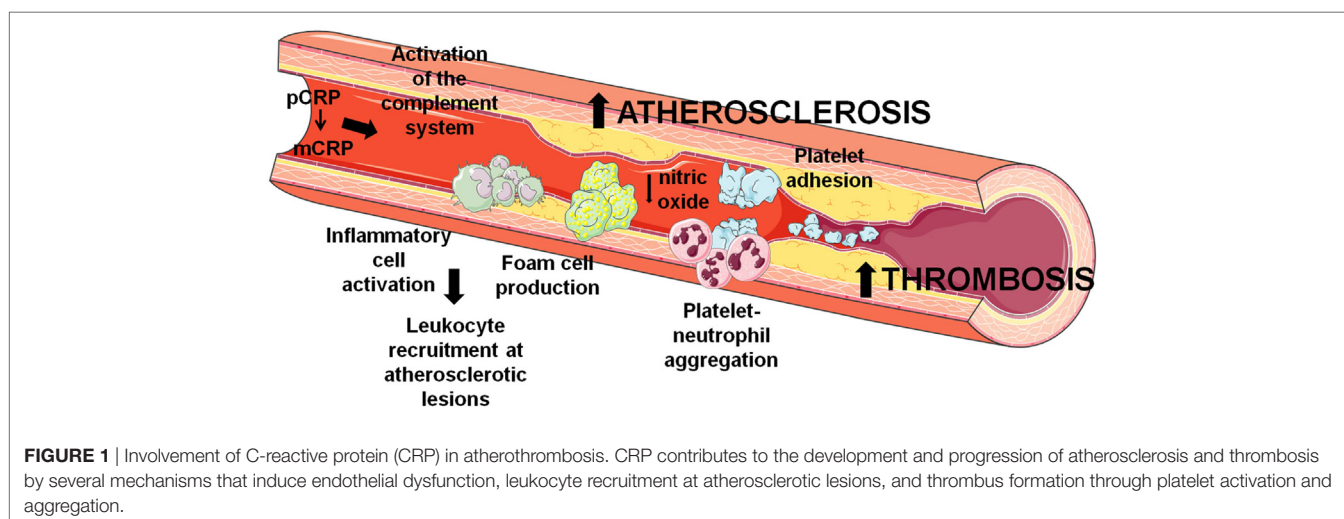
As depicted in **Figure 1**, the dissociation of pCRP into mCRP could be interpreted as a master switch for the inflammatory processes involved in atherogenesis. Both mCRP bound to phosphorylcholine of activated cell membranes and mCRP present within the advanced atherosclerotic plaque may play a critical role in the further development of the plaque and thrombus formation and propagation upon mechanical or spontaneous atherosclerotic plaque rupture. Nevertheless, it is worth mention that some *ex vivo* experiments suggest anti-atherosclerotic functions of CRP. As previously stated, CRP binds to enzymatically modified LDL at the same binding site as phosphocholine; therefore, it could prevent the formation of foam cells and limit complement activation (40, 41). Indeed, when CRP binds to lysophosphatidylcholine, this complex triggers a less potent generation of ROS and less activation of the transcription factors AP-1 and NF- $\kappa$ B by macrophages in comparison to free CRP or lysophosphatidylcholine, reducing the pro-atherogenic effects of macrophages (42). Finally, it has also been shown that CRP also affects the physicochemical properties of LDL and inhibits further oxidation of ox-LDL (43, 44), although the mechanism remains unknown. In addition, mCRP has been found to decrease the

uptake of acetylated LDL by endothelial cells independently of CD16, CD32, or the receptor for oxidized LDL (45).

## CRP IN ISCHEMIA AND ANGIOGENESIS

Monomeric CRP has been involved in ischemic heart disease (46), therefore pCRP dissociation to mCRP modulates inflammation in both acute (cardiac ischemia/reperfusion) and chronic (atherosclerosis) inflammatory processes. Local inflammatory response during myocardial ischemia contributes to myocardial damage and infarct size, and plays a major role in angiogenesis and tissue remodeling. Infiltrated macrophages at the border site of the cardiac ischemic lesion express mCRP (47, 48), and CRP in monocytes upregulates vascular endothelial growth factor (VEGF)-A expression *in vitro* via binding to its Fc-gamma receptors (49). In fact, myocardial ischemia activates mCRP expression in myocardial infiltrated macrophages but not in peripheral blood mononuclear cells (47), and cardiac mCRP expression remains elevated after 1 week of acute myocardial infarction (48), potentially contributing to cardiac remodeling and in perpetuating and/or amplifying the inflammatory process. Along this line, circulating CRP has been shown to correlate with infarct size and left ventricle remodeling 2 months after percutaneous coronary intervention, and patients with persistent microvascular obstruction presented increased circulating CRP levels 2 days after percutaneous coronary intervention (50).

Angiogenesis also has a role in plaque instability and disruption, favoring leukocyte and macrophage infiltration in growing atherosclerotic lesions. Indeed, the adventitial *vasa vasorum* facilitates neovascularization related to progression of atherosclerosis (51). Although some authors have observed that CRP inhibits VEGF production and angiogenesis (23, 52), several studies suggest that mCRP may be a mediator of neovessel formation in the intima of vulnerable plaques, as it has been localized in the adventitia and intimal neovessels from complicated regions of unstable carotid plaques (53). In the setting of atherosclerosis, CRP upregulates VEGF expression *via* activating hypoxia



inducible factor-1 $\alpha$ , and MMP-2 expression and in adipose-derived stem cells, significantly increasing endothelial cell tube formation and *vasa vasorum* proliferation (54). As previously explained, mCRP has been localized around newly formed microvessels in carotid artery plaques and in peri-infarct regions after an acute ischemic stroke (34, 55), promoting angiogenesis and inducing inflammation and increased permeability of abnormally developing microvessels after tissue injury (56), potentially leading to an increased risk of dementia.

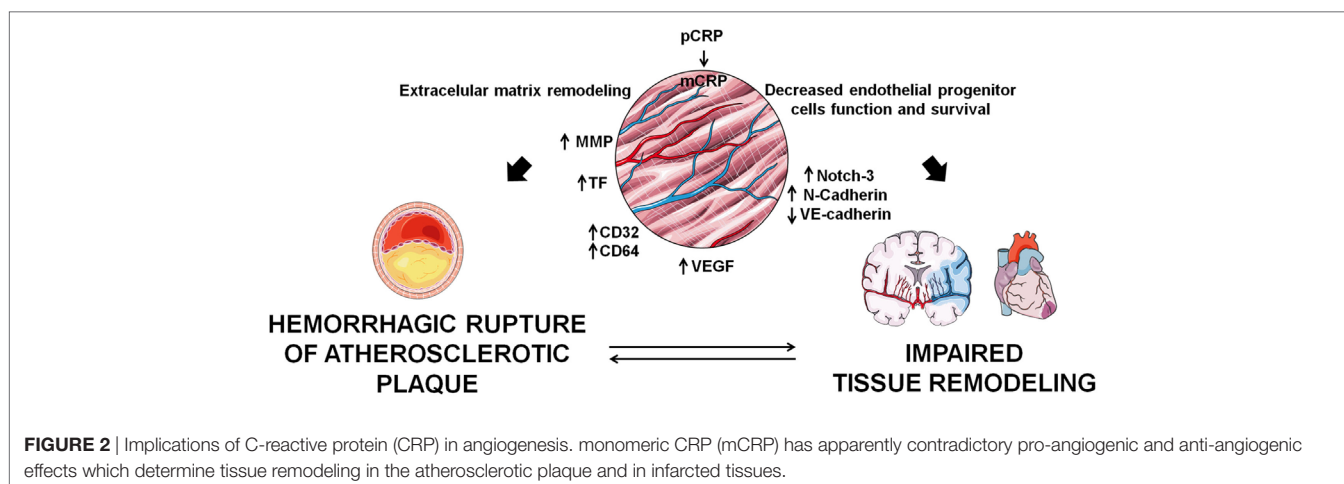
In stroke patients, mCRP colocalized with endoglin (CD105), a marker of angiogenesis in regions of revascularization, and stimulated phosphorylation of extracellular signal-regulated kinase (ERK)1/2, inducing cell migration and formation of tube-like structures independently of the CD16 axis (55). mCRP exerts potent angiogenic effects on microvascular endothelial cells. CRP dissociates into mCRP on the endothelial cell membrane and mCRP induces angiogenic effects by increasing TF expression and activation of the axis F3-TF-ETS1-CCL2 (9), and by increasing endothelial expression of CD32 and CD64 (57), thus promoting migration, wound repair, and tube-like formation. In parallel, it has been demonstrated that mCRP has the ability to promote angiogenesis by increasing proliferation, migration, and tube-like structure formation *in vitro* and by stimulating blood vessel formation *in vivo* with the chorioallantoic membrane assay. mCRP induced vascular VEGFR2/KDR, platelet-derived growth factor (PDGF-BB), inhibitor of DNA binding/differentiation-1 (ID1) gene expression, notch family transcription factors (Notch1 and Notch3), and also induced stabilization and maturation of cysteine-rich angiogenic inducer 61 (CYR61/CCN1), overall playing a central role in the main stages of blood vessel formation and remodeling (58). Along this line, mCRP induces Notch-3 and N-cadherin expression and down-regulates VE-cadherin expression. mCRP and Notch-3 act in a co-operative manner in vascular endothelial cells, exerting a role in the remodeling and maturation of the vascular development by increasing endothelial cell proliferation, migration, and tube formation and also stabilizing vascular structures through modulating VE-cadherin and N-cadherin expression (59). On the other hand, CRP has several deleterious effects on endothelial

progenitor cells, which account for about 26% of endothelial cells in newly formed blood vessels (60), by decreasing their survival and inducing apoptosis, by impairing their differentiation through the inhibition of the expression of tyrosine-protein kinase receptor for angiopoietin (Tie)-2, endothelial cell-specific lectin, and VE-cadherin, and by impairing nitric oxide-dependant angiogenesis *via* decreasing endothelial nitric oxide synthase (61, 62). Therefore, as depicted in **Figure 2**, angiogenesis plays a dual role in CVD progression, and further research should focus on the mechanisms by which CRP may contribute to the atherosclerotic process and/or tissue repair.

## CRP AND CVD PROGNOSIS

Although CRP response is unspecific and is triggered by many disorders unrelated to cardiovascular disease, mathematical models that incorporate high-sensitivity CRP (hsCRP) improve CV risk prediction. Increased levels of CRP strongly predict the thrombotic complications of atherosclerosis, principally myocardial infarction (1) and its adverse outcomes such as left ventricular failure, cardiac death, and ventricle rupture (7). In fact, CRP may have a role in risk stratification of patients with established CVD. hsCRP levels > 3 mg/L are predictive of major adverse cardiac events at 1 year, and are also associated with higher coronary plaque burden and volume (63). In addition, low, average and high CV risk categories can be stratified by hsCRP levels (<1.0, 1.0 to 3.0, and >3.0 mg/L, respectively) (64), and in the general population CRP levels are able to independently predict the risk of all-cause and cardiovascular mortality (65).

In subjects at intermediate risk of CVD, incorporation of CRP to a model of assessment of CV risk improves the prognostic power for myocardial infarction presentation (66), and could help prevent 1 additional CV event in 10 years from 400–500 screened subjects (12). In patients with previous CVD and in asymptomatic subjects, hsCRP was a moderated predictor of coronary heart disease at the long term (67). In fact, the combination of troponin I, N-terminal pro-brain natriuretic peptide (NT pro-BNP), cystatin C and CRP improved significantly the risk stratification for cardiovascular death (68). In patients with



stable and unstable angina, elevated CRP levels are predictive of future coronary events (69). Indeed, in ST-elevation myocardial infarction patients CRP levels predicted heart failure and cardiovascular mortality the year after the CV event (70), and in patients with non-ST-elevation myocardial infarction, in-hospital mortality was four times higher in patients with a CRP > 10 mg/L compared to patients with <3 mg/L CRP levels, and this association persisted at the long term (71).

High-sensitivity CRP can be quantified by immunonephelometry sensitized techniques routinely used to measure circulating pCRP with a lower detection limit than former procedures. However, as stated in this review it is unlikely that circulating pCRP elicit a direct role in CHD progression (7), because no major prothrombotic or pro-inflammatory effects have been found for circulating pCRP, and no association between genetically elevated CRP and risk of CHD has been found (72). Therefore, it seems plausible that mCRP would be the responsible for the observed associations between CRP and CVD.

## CONCLUSION

As reviewed, mCRP is a potential regulator of signaling pathways associated with thrombosis, angiogenesis, and inflammation. The ability of CRP to bind and interact with multiple ligands underscores its implication in different steps of atherosclerosis and CVD. CRP contributes to atherosclerosis progression by exerting pro-inflammatory effects, modulating the innate immune response and activating the complement system, promoting platelet activation, thrombus formation, vascular remodeling, and angiogenesis. However, whether CRP acts as regulator or amplifier of the innate immune response remains to be fully elucidated. Determining whether increased pCRP production merely reflects atherosclerosis or does indeed participate in its pathogenesis and complications is of utmost importance in order to definitively consider hsCRP as a clinical biomarker of CVD.

The study of the molecular mechanisms by which CRP contributes to atherothrombosis, angiogenesis, and CVD has a major pitfall. Human CRP does not interact with C1q in mice,

and mice do not produce large amounts of CRP after an inflammatory stimuli (46). The study of CRP function has largely been performed with administration of exogenous, heterologous CRP or with mice transgenic for rabbit or human CRP. Therefore, caution should be taken when extrapolating from animal models to humans, and more research toward a more appropriate animal model is still warranted. Taking this into consideration, further research is required in order to differentially characterize the roles of CRP isoforms (pCRP, facilitator, versus mCRP, effector) in CVD onset and progression, and the binding ligands to circulating pCRP which can lead to CRP dissociation and induction of local inflammation in order to develop more potent and orally bioavailable “CRP inhibitors” for the treatment of inflammation and atherosclerosis.

## AUTHOR CONTRIBUTIONS

GC-B prepared the main body of the manuscript and figures. EP, GA, TP, MS, and GV wrote different sections of the manuscript. LB revised and prepared the manuscript. All authors listed critically revised the paper for intellectual content.

## ACKNOWLEDGMENTS

The authors thank the Fundació d'Investigació Cardiovascular (FIC)-Fundacion Jesús Serra, Barcelona, Spain, for their continuous support.

## FUNDING

GC-B is a Juan de la Cierva- Incorporación Postdoctoral Fellow (IJCI-2015-26358) from the Spanish Ministry of Economy and Competitiveness (MINECO), Spain. This work was supported by grants from Spanish Ministry of Economy and Competitiveness of Science [SAF2016-76819-R to LB]; Institute of Health Carlos III, ISCIII [TERCEL—RD16/0011/0018 and CIBERCV CB16/11/0041 to LB]; and FEDER “Una Manera de Hacer Europa.”

## REFERENCES

- Pepys MB, Hirschfeld GM. C-reactive protein: a critical update. *J Clin Invest* (2003) 111:1805–12. doi:10.1172/JCI18921
- Devaraj S, Jialal I. C-reactive protein polarizes human macrophages to an M1 phenotype and inhibits transformation to the M2 phenotype. *Arterioscler Thromb Vasc Biol* (2011) 31:1397–402. doi:10.1161/ATVBAHA.111.225508
- Calabro P, Chang DW, Willerson JT, Yeh ETH. Release of C-reactive protein in response to inflammatory cytokines by human adipocytes: linking obesity to vascular inflammation. *J Am Coll Cardiol* (2005) 46:1112–3. doi:10.1016/j.jacc.2005.06.017
- Thompson D, Pepys MB, Wood SP. The physiological structure of human C-reactive protein and its complex with phosphocholine. *Structure* (1999) 7:169–77. doi:10.1016/S0969-2126(99)80023-9
- Thiele JR, Habersberger J, Braig D, Schmidt Y, Goerendt K, Maurer V, et al. Dissociation of pentameric to monomeric C-reactive protein localizes and aggravates inflammation: in vivo proof of a powerful proinflammatory mechanism and a new anti-inflammatory strategy. *Circulation* (2014) 130:35–50. doi:10.1161/CIRCULATIONAHA.113.007124
- Potempa LA, Siegel JN, Fiedel BA, Potempa RT, Gewurz H. Expression, detection and assay of a neoantigen (Neo-CRP) associated with a free, human C-reactive protein subunit. *Mol Immunol* (1987) 24:531–41. doi:10.1016/0161-5890(87)90028-9
- Strang F, Schunkert H. C-reactive protein and coronary heart disease: all said—is not it? *Mediators Inflamm* (2014) 2014:1–7. doi:10.1155/2014/757123
- Hakobyan S, Harris CL, van den Berg CW, Fernandez-Alonso MC, de Jorge EG, de Cordoba SR, et al. Complement factor H binds to denatured rather than to native pentameric C-reactive protein. *J Biol Chem* (2008) 283:30451–60. doi:10.1074/jbc.M803648200
- Peña E, de la Torre R, Arderiu G, Slevin M, Badimon L. mCRP triggers angiogenesis by inducing F3 transcription and TF signalling in microvascular endothelial cells. *Thromb Haemost* (2016) 117:357–70. doi:10.1160/TH16-07-0524
- Molins B, Pena E, Vilahur G, Mendieta C, Slevin M, Badimon L. C-reactive protein isoforms differ in their effects on thrombus growth. *Arterioscler Thromb Vasc Biol* (2008) 28:2239–46. doi:10.1161/ATVBAHA.108.174359
- Koenig W. High-sensitivity C-reactive protein and atherosclerotic disease: from improved risk prediction to risk-guided therapy. *Int J Cardiol* (2013) 168:5126–34. doi:10.1016/j.ijcard.2013.07.113
- Emerging Risk Factors Collaboration, Kaptoge S, Di Angelantonio E, Pennells L, Wood AM, White IR, et al. C-reactive protein, fibrinogen, and cardiovascular disease prediction. *N Engl J Med* (2012) 367:1310–20. doi:10.1056/NEJMoa1107477

13. Piepoli MF, Hoes AW, Agewall S, Albus C, Brotons C, Catapano AL, et al. 2016 European guidelines on cardiovascular disease prevention in clinical practice. *Eur Heart J* (2016) 37:2315–81. doi:10.1093/eurheartj/ehw106
14. Yousuf O, Mohanty BD, Martin SS, Joshi PH, Blaha MJ, Nasir K, et al. High-sensitivity C-reactive protein and cardiovascular disease: a resolute belief or an elusive link? *J Am Coll Cardiol* (2013) 62:397–408. doi:10.1016/j.jacc.2013.05.016
15. Vigushin DM, Pepys MB, Hawkins PN. Metabolic and scintigraphic studies of radioiodinated human C-reactive protein in health and disease. *J Clin Invest* (1993) 91:1351–7. doi:10.1172/JCI116336
16. Badimon L, Suades R, Crespo J, Padro T, Chiva-Blanch G. Diet, microparticles and atherothrombosis. *Front Biosci (Landmark Ed)* (2018) 23:432–57. doi:10.2741/4598
17. Daigo K, Inforzato A, Barajon I, Garlanda C, Bottazzi B, Meri S, et al. Pentraxins in the activation and regulation of innate immunity. *Immunol Rev* (2016) 274:202–17. doi:10.1111/immr.12476
18. Eisenhardt SU, Habersberger J, Murphy A, Chen Y-C, Woollard KJ, Bassler N, et al. Dissociation of pentameric to monomeric C-reactive protein on activated platelets localizes inflammation to atherosclerotic plaques. *Circ Res* (2009) 105:128–37. doi:10.1161/CIRCRESAHA.108.190611
19. Schmiedt W, Kinscherf R, Deigner HP, Kamencic H, Nauen O, Kilo J, et al. Complement C6 deficiency protects against diet-induced atherosclerosis in rabbits. *Arterioscler Thromb Vasc Biol* (1998) 18:1790–5. doi:10.1161/01.ATV.18.11.1790
20. Bhakdi S, Torzewski M, Klouche M, Hemmes M. Complement and atherogenesis: binding of CRP to degraded, nonoxidized LDL enhances complement activation. *Arterioscler Thromb Vasc Biol* (1999) 19:2348–54. doi:10.1161/01.ATV.19.10.2348
21. Biró A, Rovó Z, Papp D, Cervenak L, Varga L, Füst G, et al. Studies on the interactions between C-reactive protein and complement proteins. *Immunology* (2007) 121:40–50. doi:10.1111/j.1365-2567.2007.02535.x
22. Chang M-K, Binder CJ, Torzewski M, Witztum JL. C-reactive protein binds to both oxidized LDL and apoptotic cells through recognition of a common ligand: phosphorylcholine of oxidized phospholipids. *Proc Natl Acad Sci U S A* (2002) 99:13043–8. doi:10.1073/pnas.192399699
23. Verma S, Wang C-H, Li S-H, Dumont AS, Fedak PWM, Badiwala MV, et al. A self-fulfilling prophecy: C-reactive protein attenuates nitric oxide production and inhibits angiogenesis. *Circulation* (2002) 106:913–9. doi:10.1161/01.CIR.0000029802.88087.5E
24. Guan H, Wang P, Hui R, Edin ML, Zeldin DC, Wang DW. Adeno-associated virus-mediated human C-reactive protein gene delivery causes endothelial dysfunction and hypertension in rats. *Clin Chem* (2009) 55:274–84. doi:10.1373/clinchem.2008.115857
25. Li H-Y, Wang J, Wu Y-X, Zhang L, Liu Z-P, Filep JG, et al. Topological localization of monomeric C-reactive protein determines proinflammatory endothelial cell responses. *J Biol Chem* (2014) 289:14283–90. doi:10.1074/jbc.M114.555318
26. Hattori Y, Matsumura M, Kasai K. Vascular smooth muscle cell activation by C-reactive protein. *Cardiovasc Res* (2003) 58:186–95. doi:10.1016/S0008-6363(02)00855-6
27. Kawanami D, Maemura K, Takeda N, Harada T, Nojiri T, Saito T, et al. C-reactive protein induces VCAM-1 gene expression through NF- $\kappa$ B activation in vascular endothelial cells. *Atherosclerosis* (2006) 185:39–46. doi:10.1016/j.atherosclerosis.2005.01.057
28. Braig D, Nero TL, Koch H-G, Kaiser B, Wang X, Thiele JR, et al. Transitional changes in the CRP structure lead to the exposure of proinflammatory binding sites. *Nat Commun* (2017) 8:14188. doi:10.1038/ncomms14188
29. Khreiss T, József L, Potempa LA, Filep JG. Loss of pentameric symmetry in C-reactive protein induces interleukin-8 secretion through peroxynitrite signaling in human neutrophils. *Circ Res* (2005) 97:690–7. doi:10.1161/01.RES.0000183881.11739.CB
30. Zouki C, Haas B, Chan JS, Potempa LA, Filep JG. Loss of pentameric symmetry of C-reactive protein is associated with promotion of neutrophil-endothelial cell adhesion. *J Immunol* (2001) 167:5355–61. doi:10.4049/jimmunol.167.9.5355
31. Singh SK, Thirumalai A, Pathak A, Ngwa DN, Agrawal A. Functional transformation of C-reactive protein by hydrogen peroxide. *J Biol Chem* (2017) 292:3129–36. doi:10.1074/jbc.M116.773176
32. Cimmino G, Ragni M, Cirillo P, Petrillo G, Loffredo F, Chiariello M, et al. C-reactive protein induces expression of matrix metalloproteinase-9: a possible link between inflammation and plaque rupture. *Int J Cardiol* (2013) 168:981–6. doi:10.1016/j.ijcard.2012.10.040
33. Doronzo G, Russo I, Mattiello L, Trovati M, Anfossi G. C-reactive protein increases matrix metalloproteinase-2 expression and activity in cultured human vascular smooth muscle cells. *J Lab Clin Med* (2005) 146(5):287–98. doi:10.1016/j.lab.2005.07.010
34. Krupinski J, Turu MM, Martinez-Gonzalez J, Carvajal A, Juan-Babot JO, Iborra E, et al. Endogenous expression of C-reactive protein is increased in active (ulcerated noncomplicated) human carotid artery plaques. *Stroke* (2006) 37:1200–4. doi:10.1161/01.STR.0000217386.37107.be
35. Cermak J, Key NS, Bach RR, Balla J, Jacob HS, Vercellotti GM. C-reactive protein induces human peripheral blood monocytes to synthesize tissue factor. *Blood* (1993) 82:513–20.
36. Bisioendial RJ, Kastelein JJP, Levels JHM, Zwaginga JJ, van den Bogaard B, Reitsma PH, et al. Activation of inflammation and coagulation after infusion of C-reactive protein in humans. *Circ Res* (2005) 96:714–6. doi:10.1161/01.RES.0000163015.67711.AB
37. Habersberger J, Strang F, Scheichl A, Htun N, Bassler N, Merivirta R-M, et al. Circulating microparticles generate and transport monomeric C-reactive protein in patients with myocardial infarction. *Cardiovasc Res* (2012) 96:64–72. doi:10.1093/cvr/cvs237
38. de la Torre R, Peña E, Vilahur G, Slevin M, Badimon L. Monomerization of C-reactive protein requires glycoprotein IIb-IIIa activation: pentraxins and platelet deposition. *J Thromb Haemost* (2013) 11:2048–58. doi:10.1111/jth.12415
39. Boncler M, Rywaniak J, Szymański J, Potempa LA, Rychlik B, Watała C. Modified C-reactive protein interacts with platelet glycoprotein Iba. *Pharmacol Rep* (2011) 63:464–75. doi:10.1016/S1734-1140(11)70513-8
40. Singh SK, Suresh MV, Prayther DC, Moorman JP, Rusiñol AE, Agrawal A. C-reactive protein-bound enzymatically modified low-density lipoprotein does not transform macrophages into foam cells. *J Immunol* (2008) 180:4316–22. doi:10.4049/JIMMUNOL.180.6.4316
41. Bhakdi S, Torzewski M, Paprotka K, Schmitt S, Barsoom H, Suriyaphol P, et al. Possible protective role for C-reactive protein in atherogenesis: complement activation by modified lipoproteins halts before detrimental terminal sequence. *Circulation* (2004) 109:1870–6. doi:10.1161/01.CIR.0000124228.08972.26
42. Chang M-K, Hartvigsen K, Ryu J, Kim Y, Han K. The pro-atherogenic effects of macrophages are reduced upon formation of a complex between C-reactive protein and lysophosphatidylcholine. *J Inflamm* (2012) 9:42. doi:10.1186/1476-9255-9-42
43. Nayeri H, Naderi GA, Moghadam MS, Mohamadzadeh S, Boshtam M, Dinani NJ, et al. Effect of CRP on some of the in vitro physicochemical properties of LDL. *ARYA Atheroscler* (2010) 6:85–9. doi:10.22122/arya.v6i3.213
44. Rufail ML, Ramage SC, van Antwerpen R. C-reactive protein inhibits in vitro oxidation of low-density lipoprotein. *FEBS Lett* (2006) 580:5155–60. doi:10.1016/j.febslet.2006.08.045
45. Schwedler SB, Hansen-Hagge T, Reichert M, Schmiedeke D, Schneider R, Galle J, et al. Monomeric C-reactive protein decreases acetylated LDL uptake in human endothelial cells. *Clin Chem* (2009) 55:1728–31. doi:10.1373/CLINCHEM.2009.125732
46. Vilahur G, Badimon L. Biological actions of pentraxins. *Vascul Pharmacol* (2015) 73:38–44. doi:10.1016/j.vph.2015.05.001
47. Vilahur G, Hernández-Vera R, Molins B, Casaní L, Duran X, Padró T, et al. Short-term myocardial ischemia induces cardiac modified C-reactive protein expression and proinflammatory gene (cyclo-oxygenase-2, monocyte chemoattractant protein-1, and tissue factor) upregulation in peripheral blood mononuclear cells. *J Thromb Haemost* (2009) 7:485–93. doi:10.1111/j.1538-7836.2008.03244.x
48. Vilahur G, Juan-Babot O, Peña E, Oñate B, Casaní L, Badimon L. Molecular and cellular mechanisms involved in cardiac remodeling after acute myocardial infarction. *J Mol Cell Cardiol* (2011) 50:522–33. doi:10.1016/j.yjmcc.2010.12.021
49. Bello G, Cailotto F, Hanriot D, Kolopp-Sarda M-N, Latger-Cannard V, Hess K, et al. C-reactive protein (CRP) increases VEGF-A expression in monocytic cells via a PI3-kinase and ERK 1/2 signaling dependent pathway. *Atherosclerosis* (2008) 200:286–93. doi:10.1016/j.atherosclerosis.2007.12.046

50. Ørn S, Manhenke C, Ueland T, Damås JK, Mollnes TE, Edvardsen T, et al. C-reactive protein, infarct size, microvascular obstruction, and left-ventricular remodelling following acute myocardial infarction. *Eur Heart J* (2009) 30:1180–6. doi:10.1093/eurheartj/ehp070
51. Mulligan-Kehoe MJ. The vasa vasorum in diseased and nondiseased arteries. *Am J Physiol Heart Circ Physiol* (2010) 298:H295–305. doi:10.1152/ajpheart.00884.2009
52. Schneeweis C, Gräfe M, Bungenstock A, Spencer-Hänsch C, Fleck E, Goetze S. Chronic CRP-exposure inhibits VEGF-induced endothelial cell migration. *J Atheroscler Thromb* (2010) 17:203–12. doi:10.5551/jat.3004
53. Slevin M, Rovira N, Turu M, Luque A, Badimon L, Gaffney J, et al. Modified C-reactive protein is expressed in adventitia and intimal neovessels from complicated regions of unstable carotid plaques. *Open Circ Vasc J* (2009) 2:23–9. doi:10.2174/1877382600902010023
54. Chen J, Gu Z, Wu M, Yang Y, Zhang J, Ou J, et al. C-reactive protein can upregulate VEGF expression to promote ADSC-induced angiogenesis by activating HIF-1 $\alpha$  via CD64/PI3k/Akt and MAPK/ERK signaling pathways. *Stem Cell Res Ther* (2016) 7:114. doi:10.1186/s13287-016-0377-1
55. Slevin M, Matou-Nasri S, Turu M, Luque A, Rovira N, Badimon L, et al. Modified C-reactive protein is expressed by stroke neovessels and is a potent activator of angiogenesis in vitro. *Brain Pathol* (2010) 20:151–65. doi:10.1111/j.1750-3639.2008.00256.x
56. Slevin M, Matou S, Zeinolabediny Y, Corpas R, Weston R, Liu D, et al. Monomeric C-reactive protein—a key molecule driving development of Alzheimer's disease associated with brain ischaemia? *Sci Rep* (2015) 5:13281. doi:10.1038/srep13281
57. Devaraj S, Du Clos TW, Jialal I. Binding and internalization of C-reactive protein by Fc $\gamma$  receptors on human aortic endothelial cells mediates biological effects. *Arterioscler Thromb Vasc Biol* (2005) 25:1359–63. doi:10.1161/01.ATV.0000168573.10844.ae
58. Turu MM, Slevin M, Matou S, West D, Rodriguez C, Luque A, et al. C-reactive protein exerts angiogenic effects on vascular endothelial cells and modulates associated signalling pathways and gene expression. *BMC Cell Biol* (2008) 9:47. doi:10.1186/1471-2121-9-47
59. Boras E, Slevin M, Alexander MY, Aljohi A, Gilmore W, Ashworth J, et al. Monomeric C-reactive protein and Notch-3 co-operatively increase angiogenesis through PI3K signalling pathway. *Cytokine* (2014) 69:165–79. doi:10.1016/j.cyto.2014.05.027
60. Murayama T, Tepper OM, Silver M, Ma H, Losordo DW, Isner JM, et al. Determination of bone marrow-derived endothelial progenitor cell significance in angiogenic growth factor-induced neovascularization in vivo. *Exp Hematol* (2002) 30:967–72. doi:10.1016/S0301-472X(02)00867-6
61. Verma S, Kuliszewski MA, Li S-H, Szmithko PE, Zucco L, Wang C-H, et al. C-reactive protein attenuates endothelial progenitor cell survival, differentiation, and function: further evidence of a mechanistic link between C-reactive protein and cardiovascular disease. *Circulation* (2004) 109:2058–67. doi:10.1161/01.CIR.0000127577.63323.24
62. Jialal I, Verma S, Devaraj S. Inhibition of endothelial nitric oxide synthase by C-reactive protein: clinical relevance. *Clin Chem* (2009) 55:206–8. doi:10.1373/clinchem.2008.119206
63. Cheng JM, Oemrawsingh RM, Garcia-Garcia HM, Akkerhuis KM, Kardys I, de Boer SPM, et al. Relation of C-reactive protein to coronary plaque characteristics on grayscale, radiofrequency intravascular ultrasound, and cardiovascular outcome in patients with acute coronary syndrome or stable angina pectoris (from the ATHEROREMO-IVUS study). *Am J Cardiol* (2014) 114:1497–503. doi:10.1016/j.amjcard.2014.08.013
64. Grundy SM, Bazzarre T, Cleeman J, D'Agostino RB, Hill M, Houston-Miller N, et al. Prevention conference V: beyond secondary prevention: identifying the high-risk patient for primary prevention: medical office assessment: writing group I. *Circulation* (2000) 101:E3–11. doi:10.1161/01.cir.0000052939.59093.45
65. Li Y, Zhong X, Cheng G, Zhao C, Zhang L, Hong Y, et al. Hs-CRP and all-cause, cardiovascular, and cancer mortality risk: a meta-analysis. *Atherosclerosis* (2017) 259:75–82. doi:10.1016/j.atherosclerosis.2017.02.003
66. Ridker PM, Glynn RJ, Hennekens CH. C-reactive protein adds to the predictive value of total and HDL cholesterol in determining risk of first myocardial infarction. *Circulation* (1998) 97:2007–11. doi:10.1161/01.CIR.97.20.2007
67. Danesh J, Wheeler JG, Hirschfield GM, Eda S, Eiriksdottir G, Rumley A, et al. C-reactive protein and other circulating markers of inflammation in the prediction of coronary heart disease. *N Engl J Med* (2004) 350:1387–97. doi:10.1056/NEJMoa032804
68. Zethelius B, Berglund L, Sundström J, Ingelsson E, Basu S, Larsson A, et al. Use of multiple biomarkers to improve the prediction of death from cardiovascular causes. *N Engl J Med* (2008) 358:2107–16. doi:10.1056/NEJMoa0707064
69. Haverkate F, Thompson SG, Pyke SD, Gallimore JR, Pepys MB. Production of C-reactive protein and risk of coronary events in stable and unstable angina. European concerted action on thrombosis and disabilities angina pectoris study group. *Lancet* (1997) 349:462–6. doi:10.1016/S0140-6736(96)07591-5
70. Stumpf C, Sheriff A, Zimmermann S, Schaeffner L, Schlundt C, Raaz D, et al. C-reactive protein levels predict systolic heart failure and outcome in patients with first ST-elevation myocardial infarction treated with coronary angioplasty. *Arch Med Sci* (2017) 5:1086–93. doi:10.5114/aoms.2017.69327
71. Mueller C, Buettner HJ, Hodgson JM, Marsch S, Perruchoud AP, Roskamm H, et al. Inflammation and long-term mortality after non-ST elevation acute coronary syndrome treated with a very early invasive strategy in 1042 consecutive patients. *Circulation* (2002) 105:1412–5. doi:10.1161/01.CIR.0000012625.02748.62
72. Dehghan A, Dupuis J, Barbalic M, Bis JC, Eiriksdottir G, Lu C, et al. Meta-analysis of genome-wide association studies in >80 000 subjects identifies multiple loci for C-reactive protein levels. *Circulation* (2011) 123:731–8. doi:10.1161/CIRCULATIONAHA.110.948570

**Conflict of Interest Statement:** The authors declare that the research was conducted in the absence of any commercial or financial relationships that could be construed as a potential conflict of interest.

Copyright © 2018 Badimon, Peña, Arderiu, Padró, Slevin, Vilahur and Chiva-Blanch. This is an open-access article distributed under the terms of the Creative Commons Attribution License (CC BY). The use, distribution or reproduction in other forums is permitted, provided the original author(s) and the copyright owner are credited and that the original publication in this journal is cited, in accordance with accepted academic practice. No use, distribution or reproduction is permitted which does not comply with these terms.