

A mega-phylogeny of the Annonaceae: taxonomic placement of five enigmatic genera and support for a new tribe, Phoenicantheae

Xing Guo^{1*}, Chin Cheung Tang^{1,2*}, Daniel C. Thomas^{1,3}, Thomas L. P. Couvreur⁴ & Richard M. K. Saunders¹

¹School of Biological Sciences, The University of Hong Kong, Hong Kong, China.

²Current address: School of Science and Technology, The Open University of Hong Kong, Ho Man Tin, Kowloon, Hong Kong, China.

³Singapore Botanic Gardens, 1 Cluny Road, Singapore 259569, Singapore.

⁴Institut de Recherche pour le Développement (IRD), UMR-DIADE, BP 64501, F-34394 Montpellier cedex 5, France.

*these authors contributed equally to this work.

Correspondence and requests for materials should be addressed to R.M.K.S. (email: saunders@hku.hk)

Keywords: Annonaceae; cpDNA, large-scale phylogeny; new tribe; taxonomy

Supplementary Table S1. Clade support of selected major nodes (above genus level) in the Annonaceae. Node numbers correlate with those shown in supplementary Figs S1–S9. *represents nodes in this study have higher support values than that of previous study². Nodes within tribe Miliuseae are not compared due to the poor resolution in both analyses.

Node	This study	193-species dataset ²
A: Subfam. Ambavioideae	76/62/0.84	two support values \geq BS 85%/PP 0.95
B*: <i>Tetrameranthus</i>	93/88/1	two support values \geq BS 85%/PP 0.95
C*: <i>Mezzettia-Ambavia</i>	98/69/1	not resolved
D*:	100/100/1	two support values \geq BS 85%/PP 0.95
E*:	96/99/1	one support values \geq BS 85%/PP 0.95
F*: <i>Asimina</i>	100/100/1	no support
G*: tribe Monodoreae	97/71/0.86	no support
H*:	99/98/0.98	two support values \geq BS 85%/PP 0.95
I*:	99/92/1	one support values \geq BS 85%/PP 0.95
J*: <i>Hexalobus-Uvariastrum</i>	100/92/0.95	two support values \geq BS 85%/PP 0.95
K*: <i>Monocyclanthus-Uvariopsis</i>	98/90/1	one support values \geq BS 85%/PP 0.95
L*: <i>Uvariopsis</i>	91/-/0.97	one support values \geq BS 85%/PP 0.95
M*: <i>Uvariadendron</i>	98/93/1	no support
N*: <i>Fissistigma-Mitrella</i>	100/100/1	one support values \geq BS 85%/PP 0.95
O*:	99/98/1	one support values \geq BS 85%/PP 0.95
P*:	97/100/1	two support values \geq BS 85%/PP 0.95
Q*: <i>Dasymaschalon</i>	100/100/1	two support values \geq BS 85%/PP 0.95
R*: <i>Desmos</i>	96/97/1	one support values \geq BS 85%/PP 0.95
S*: <i>Monanthes</i>	96/98/1	one support values \geq BS 85%/PP 0.95
T:	65/51/-	three support values \geq BS 85%/PP 0.95
U*: <i>Onychopetalum-Bocageopsis</i>	97/85/1	one support values \geq BS 85%/PP 0.95
V*: <i>Bocageopsis</i>	92/87/1	two support values \geq BS 85%/PP 0.95
W*: <i>Unonopsis</i>	100/100/1	two support values \geq BS 85%/PP 0.95
X: Monocarpaceae-Miliuseae	82/51/0.68	three support values \geq BS 85%/PP 0.95
Y*: tribe Miliuseae	100/100/1	two support values \geq BS 85%/PP 0.95

Supplementary figure legend

Fig. S1. Full version of best-scoring maximum likelihood tree inferred from a 754-accession dataset of eight chloroplast markers, showing topology of Anaxagoreoideae, Ambavioideae and Bocageae. ML bootstrap (BS) values ≥ 50 , MP jackknife (JK) values ≥ 50 and Bayesian posterior probabilities (PP) values ≥ 0.5 are indicated at each node: BS /JK/ PP. -, represents clade support values $< 50\%$. Node numbers correlate with those shown in supplementary Table S1.

Fig. S2. Full version of best-scoring maximum likelihood tree inferred from a 754-accession dataset of eight chloroplast markers, showing topology of Guatterieae, updated for the Taxonomy⁶⁷ in bold. ML bootstrap (BS) values ≥ 50 , MP jackknife (JK) values ≥ 50 and Bayesian posterior probabilities (PP) values ≥ 0.5 are indicated at each node: BS /JK/ PP. -, represents clade support values $< 50\%$.

Fig. S3. Full version of best-scoring maximum likelihood tree inferred from a 754-accession dataset of eight chloroplast markers, showing topology of Duguetieae and Xylopieae. ML bootstrap (BS) values ≥ 50 , MP jackknife (JK) values ≥ 50 and Bayesian posterior probabilities (PP) values ≥ 0.5 are indicated at each node: BS /JK/ PP. -, represents clade support values $< 50\%$. Species names within *Duguetia* are omitted since phylogenetic relationships within the genus have not been formally published by those contributing the sequences to GenBank.

Fig. S4. Full version of best-scoring maximum likelihood tree inferred from a 754-accession dataset of eight chloroplast markers, showing topology of Annoneae. ML bootstrap (BS) values ≥ 50 , MP jackknife (JK) values ≥ 50 and Bayesian posterior probabilities (PP) values ≥ 0.5 are indicated at each node: BS /JK/ PP. -, represents clade support values $< 50\%$. Node numbers correlate with those shown in supplementary Table S1.

Fig. S5. Full version of best-scoring maximum likelihood tree inferred from a 754-accession dataset of eight chloroplast markers, showing topology of Monodoreae. ML bootstrap (BS) values ≥ 50 , MP jackknife (JK) values ≥ 50 and Bayesian posterior probabilities (PP) values ≥ 0.5 are indicated at each node: BS /JK/ PP. -, represents clade support values $< 50\%$. Node numbers correlate with those shown in supplementary Table S1.

Fig. S6. Full version of best-scoring maximum likelihood tree inferred from a 754-accession dataset of eight chloroplast markers, showing topology of Uvarieae. ML bootstrap (BS) values ≥ 50 , MP jackknife (JK) values ≥ 50 and Bayesian posterior probabilities (PP) values ≥ 0.5 are indicated at each node: BS /JK/ PP. -, represents clade support values $< 50\%$. Node numbers correlate with those shown in supplementary Table S1.

Fig. S7. Full version of best-scoring maximum likelihood tree inferred from a 754-accession dataset of eight chloroplast markers, showing topology of Piptostigmatidae, Malmeeae, Maasieae, Fenerivieae, Phoenicantheae, Dendrokingstonieae, Monocarpieae and Miliuseae. ML bootstrap (BS) values ≥ 50 , MP jackknife (JK) values ≥ 50 and Bayesian posterior probabilities (PP) values ≥ 0.5 are indicated at

each node: BS /JK/ PP. -, represents clade support values < 50%. Node numbers correlate with those shown in supplementary Table S1.

Fig. S8. Full version of best-scoring maximum likelihood tree inferred from a 754-accession dataset of eight chloroplast markers, showing topology of *Miliuseae* (part 1). ML bootstrap (BS) values ≥ 50 , MP jackknife (JK) values ≥ 50 and Bayesian posterior probabilities (PP) values ≥ 0.5 are indicated at each node: BS /JK/ PP. -, represents clade support values < 50%. Node numbers correlate with those shown in supplementary Table S1.

Fig. S9. Full version of best-scoring maximum likelihood tree inferred from a 754-accession dataset of eight chloroplast markers, showing topology of *Miliuseae* (part 2). ML bootstrap (BS) values ≥ 50 , MP jackknife (JK) values ≥ 50 and Bayesian posterior probabilities (PP) values ≥ 0.5 are indicated at each node: BS /JK/ PP. -, represents clade support values < 50%.

Fig. S1

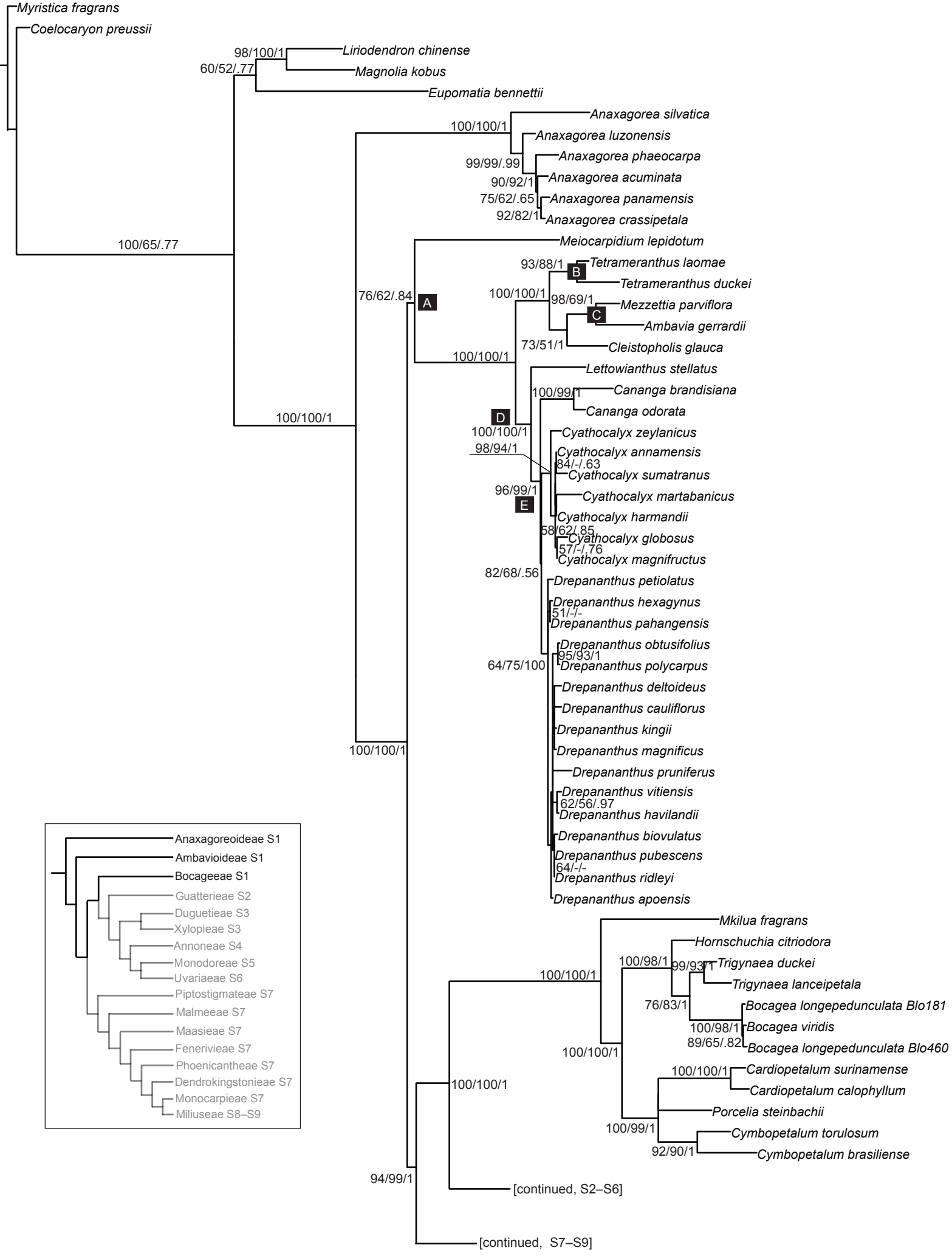
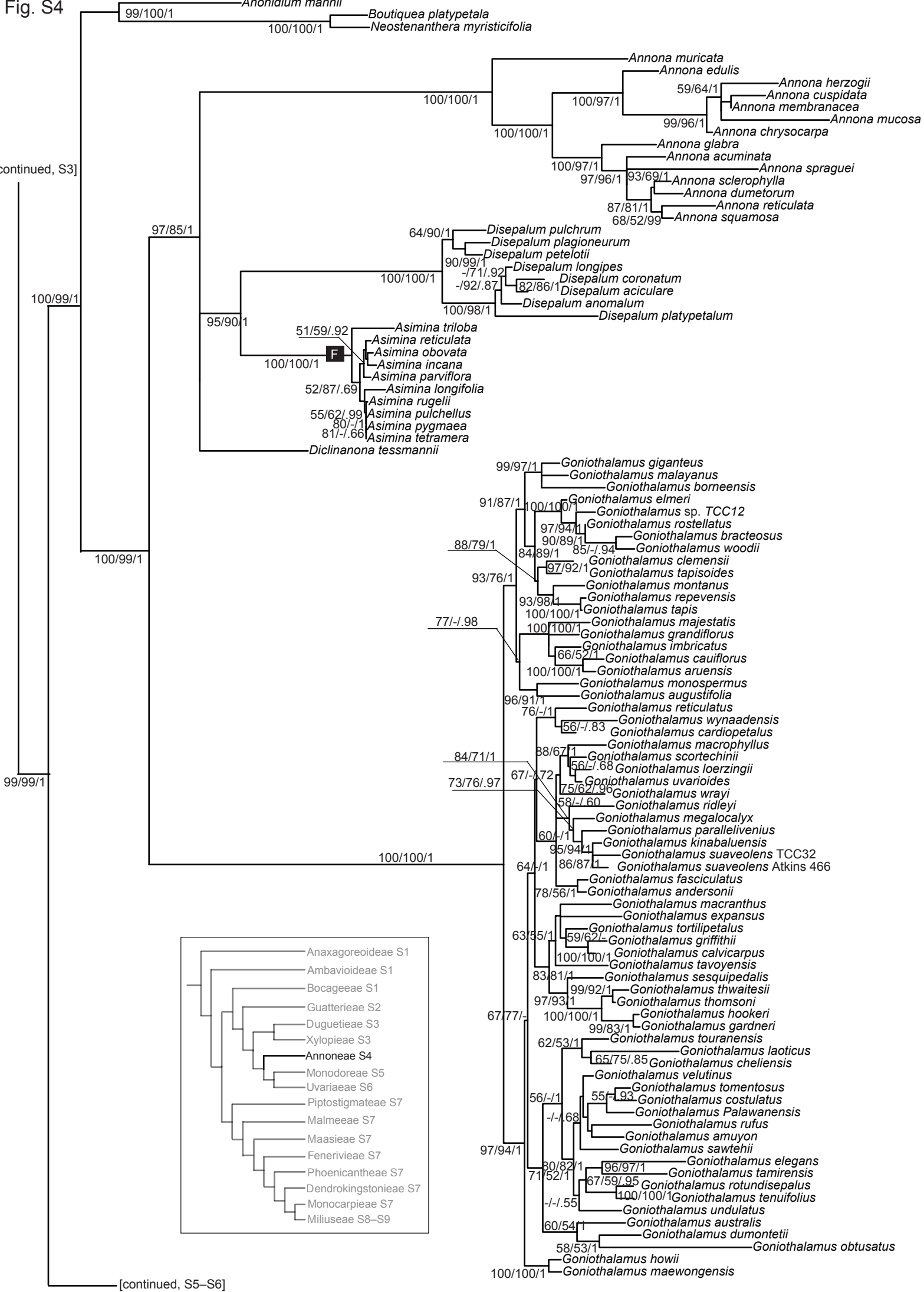


Fig. S2



Fig. S4



[continued, S3]

99/99/1

[continued, S5-S6]

Fig. S5

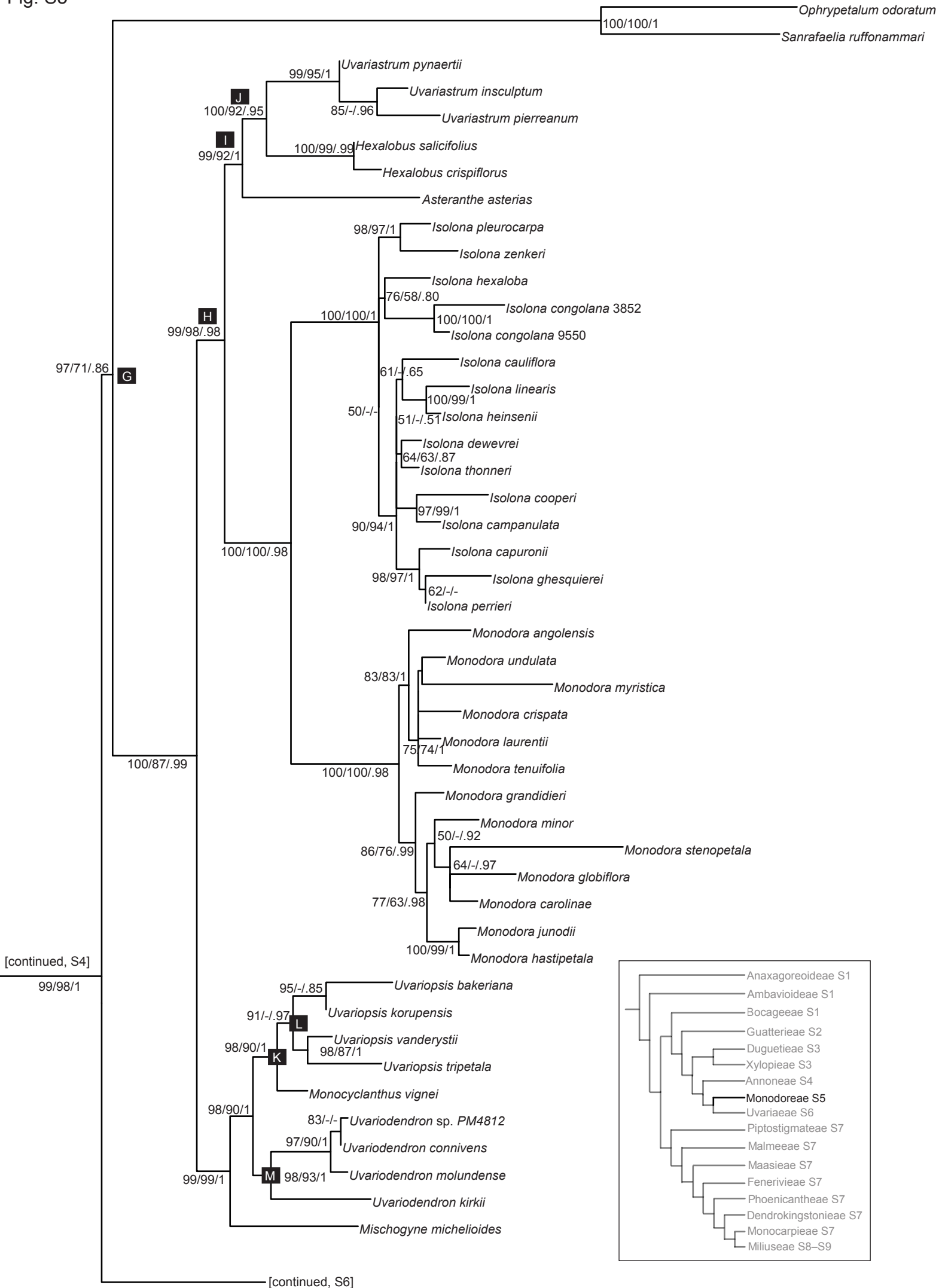


Fig. S7

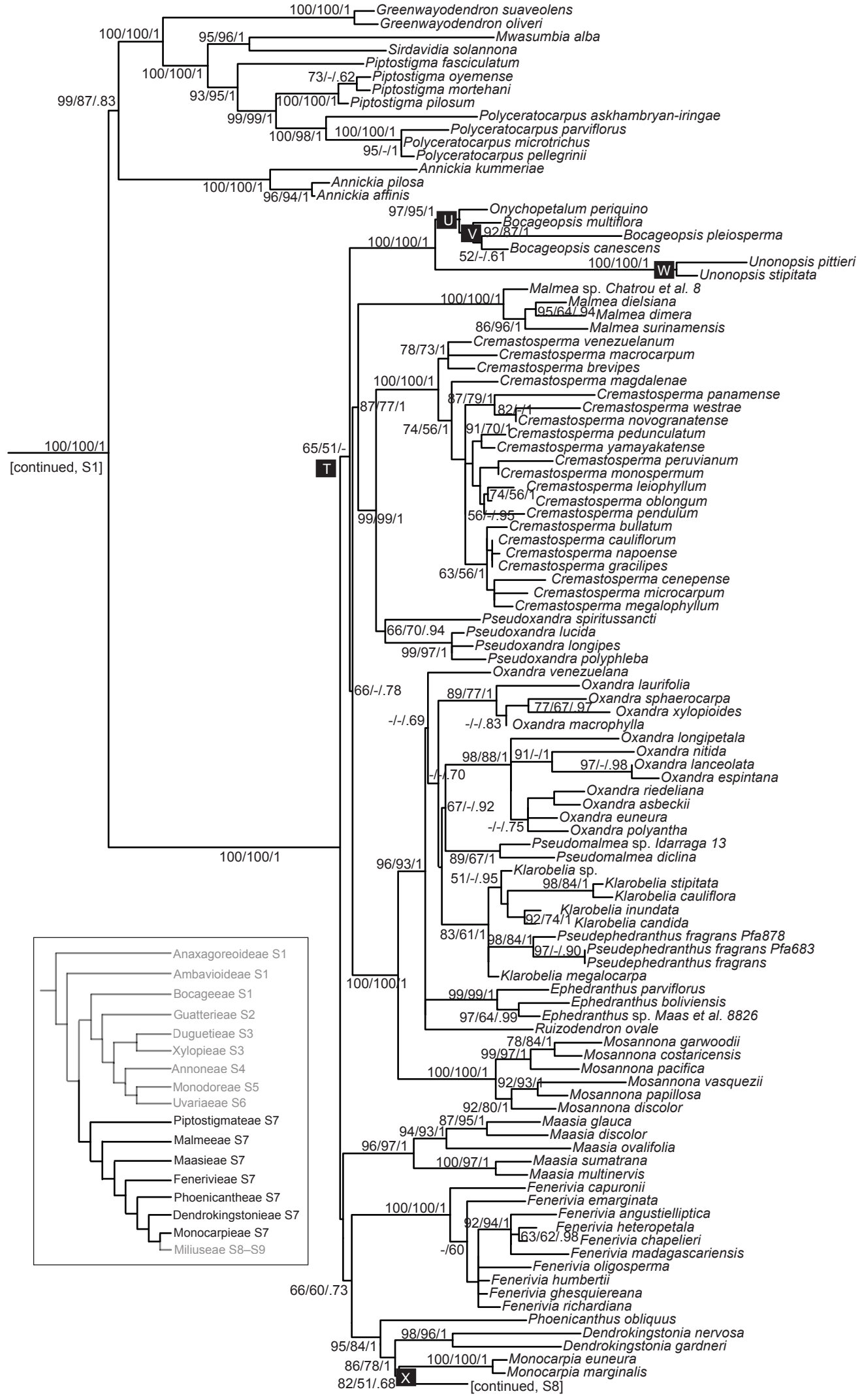


Fig. S8

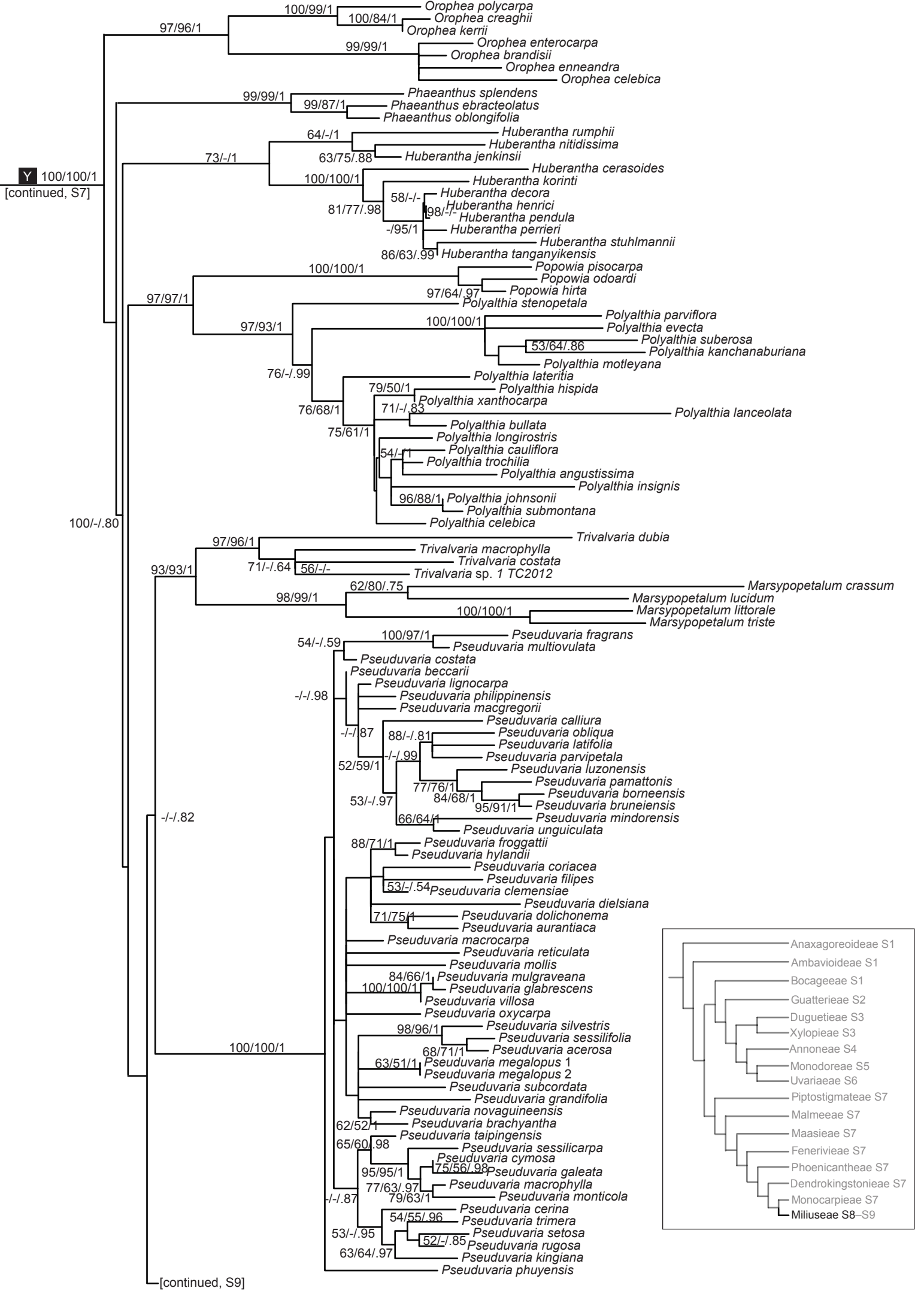
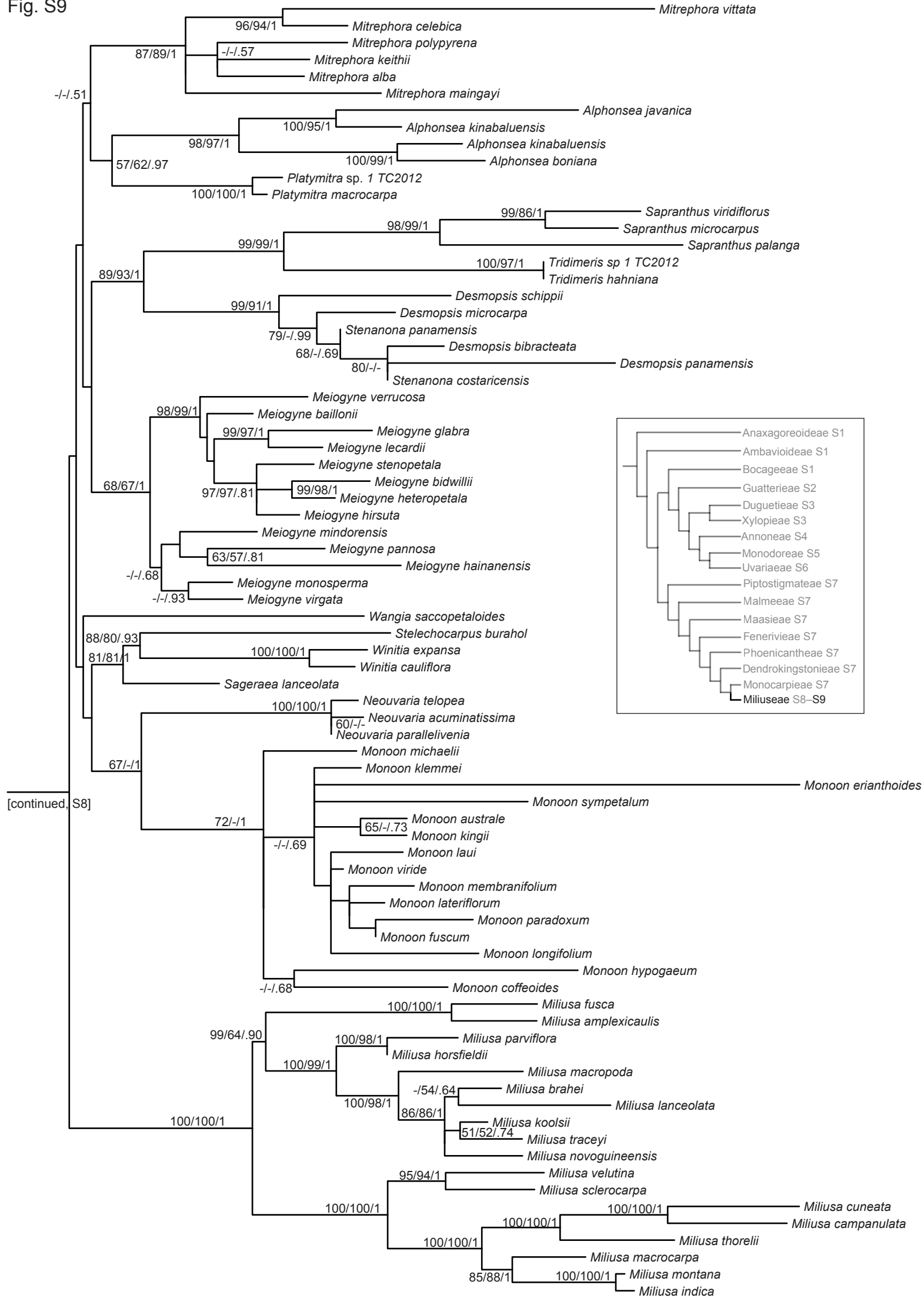


Fig. S9



Supplementary Appendix I. Voucher information of newly generated accessions in this study.

Species	Voucher	Origin
<i>Bocagea longepedunculata</i> Mart. _Blo181	<i>R. de Mello-Silva 1181</i> (NY)	Brazil: Espírito Santo.
<i>Bocagea longepedunculata</i> Mart. _Blo460	<i>J. R. Pirani 3460</i> (NY)	Brazil: Espírito Santo.
<i>Bocagea viridis</i> A. St.-Hil.	<i>R. de Mello-Silva 1226</i> (NY)	Brazil: Rio de Janeiro.
<i>Boutiquea platypetala</i> (Engl. & Diels) Le Thomas	<i>M. F. de Carvalho 3931</i> (L)	Equatorial Guinea
<i>Cardiopetalum calophyllum</i> Schldtl.	<i>D. Alvarenga 634</i> (L)	Brazil: Distrito Federal
<i>Cardiopetalum surinamense</i> R. E. Fr.	<i>G. Deward 206</i> (L)	French Guiana: Gregoire
<i>Duckeanthus grandiflorus</i> R. E. Fr.	<i>P. J. M. Maas 6778</i> (L)	Brazil: Amazonas
<i>Pseudephedranthus fragrans</i> (R. E. Fr.) Aristeg._Pfa683	<i>N. T. da Silva 60683</i> (NY)	Brazil: Amazonas
<i>Pseudephedranthus fragrans</i> (R. E. Fr.) Aristeg._Pfa878	<i>P. J. M. Maas 6878</i> (NY)	Brazil: Amazonas
<i>Phoenicanthus obliquus</i> (Hook. f. & Thomson) Alston	<i>H. F. J. Huber 518</i> (L)	Sri Lanka: Ratnapura

+ **Supplementary Appendix II.** Species names and GenBank accession numbers of DNA sequences used in this study. -: missing data; *: newly generated sequences.

No.	Voucher information	GenBank accession numbers							
	Taxa name	<i>atpB-rbcL</i>	<i>matK</i>	<i>ndhF</i>	<i>psbA-trnH</i>	<i>rbcL</i>	<i>trnL-F</i>	<i>trnS-G</i>	<i>ycf1</i>
1	<i>Afroguatteria bequaertii</i> (De Wild.) Boutique	-	KX786588	-	-	KX786627	KX786629	-	-
2	<i>Alphonsea boniana</i> Finet & Gagnep.	-	AY518809	JQ723785	-	-	AY319077	-	-
3	<i>Alphonsea elliptica</i> Hook. f. & Thomson	-	AY518807	JQ690401	JQ690402	-	AY319078	-	JQ690403
4	<i>Alphonsea javanica</i> Scheff.	-	AY518810	-	-	-	AY319079	-	-
5	<i>Alphonsea kinabaluensis</i> J. Sinclair	-	AY518811	-	-	-	AY319080	-	-
6	<i>Ambavia gerrardii</i> (Baill.) Le Thomas	AY578118	AY220435	AY218168	-	JQ513886	JQ513889	-	-
7	<i>Anaxagorea acuminata</i> (Dunal) A. DC.	AY578121	AY220436	AY218169	-	-	-	-	-
8	<i>Anaxagorea crassipetala</i> Hemsl.	AY578126	JQ586481	-	-	JQ590151	AY580043	-	-
9	<i>Anaxagorea luzonensis</i> A. Gray	AY578132	AY518883	-	-	-	AY319188	-	-
10	<i>Anaxagorea panamensis</i> Standl.	AY578135	GQ981933	-	GQ982144	GQ981662	AY580052	-	-
11	<i>Anaxagorea phaeocarpa</i> Mart.	EF179244	AY238960	EF179279	AY841426	AY238952	EF179316	EF179321	-
12	<i>Anaxagorea silvatica</i> R. E. Fr.	EF179245	AY743477	EF179280	AY841427	AY743439	AY743458	EF179322	-
13	<i>Annickia affinis</i> (Exell) Versteegh & Sosef	AY841370	AY841393	AY841401	KC667934	AY841594	AY841671	AY841550	-
14	<i>Annickia kummeriae</i> (Engl. & Diels) Setten & Maas	-	AY238961	-	AY841443	AY238959	AY319171	-	-
15	<i>Annickia pilosa</i> (Exell) Setten & Maas	AY841371	AY743488	AY841402	AY841444	AY743450	AY743469	AY841551	-
16	<i>Annona acuminata</i> Saff.	-	GQ981934	-	GQ982146	GQ981664	-	-	-
17	<i>Annona chrysocarpa</i> Lepr. ex A. Rich.	-	-	-	-	EU420868	EU420850	-	-
18	<i>Annona cuspidata</i> (Mart.) H. Rainer	-	-	-	-	EU420869	EU420851	-	-
19	<i>Annona dumetorum</i> R. E. Fr.	-	GQ139704	-	GQ139844	EU420856	EU420838	-	GU937352

No.	Voucher information	GenBank accession numbers							
	Taxa name	<i>atpB-rbcL</i>	<i>matK</i>	<i>ndhF</i>	<i>psbA-trnH</i>	<i>rbcL</i>	<i>trnL-F</i>	<i>trnS-G</i>	<i>ycf1</i>
20	<i>Annona edulis</i> (Triana & Planch.) H. Rainer	-	-	-	-	AY841655	AY841733	-	-
21	<i>Annona glabra</i> L.	EF179246	GQ139717	EF179281	DQ125116	AY841596	AY841673	EF179323	GU937365
22	<i>Annona herzogii</i> (R. E. Fr.) H. Rainer	EF179273	DQ125062	EF179308	DQ125132	AY841656	AY841734	EF179350	-
23	<i>Annona membranacea</i> R. E. Fr.	-	JQ586514	-	-	JQ590184	-	-	-
24	<i>Annona mucosa</i> Jacq.	-	GQ139705	-	GQ139845	EU420870	EU420852	-	GU937353
25	<i>Annona muricata</i> L.	EF179247	AF543722	EF179282	AY841428	AY743440	AY743459	EF179324	-
26	<i>Annona reticulata</i> L.	-	JQ586491	-	JX856821	EU420863	EU420845	-	-
27	<i>Annona sclerophylla</i> Saff.	-	GQ139718	-	GQ139858	-	GQ139892	-	GU937366
28	<i>Annona spraguei</i> Saff.	-	GQ981935	-	GQ982147	GQ981665	-	-	-
29	<i>Annona squamosa</i> L.	-	EU715064	-	EU715086	EU420865	EU420847	-	-
30	<i>Anonidium mannii</i> (Oliv.) Engl. & Diels	EF179248	DQ125051	EF179283	DQ125117	AY841598	AY841675	EF179325	-
31	<i>Artabotrys brachypetalus</i> Benth.	-	-	-	-	JF265293	-	-	-
32	<i>Artabotrys hexapetalus</i> (L. f.) Bhandari	EF179249	AY238962	EF179284	AY841429	AY238953	EF179317	EF179326	-
33	<i>Artabotrys thomsonii</i> Oliv.	EF179250	DQ125052	EF179285	DQ125118	AY841599	AY841676	EF179327	-
34	<i>Asimina incana</i> (W. Bartram) Exell	-	GQ139730	-	GQ139873	-	GQ139903	-	GU937377
35	<i>Asimina longifolia</i> Kral	EF179251	GQ139707	EF179286	DQ125119	DQ124939	GQ139885	EF179328	GU937355
36	<i>Asimina obovata</i> (Willd.) Nash	-	GQ139716	-	GQ139855	-	GQ139908	-	GU937363
37	<i>Asimina parviflora</i> (Michx.) Dunal	-	GQ139703	-	GQ139843	-	GQ139878	-	GU937351
38	<i>Asimina pulchellus</i> (Small) Rehder & Dayton	-	GQ139714	-	GQ139854	-	GQ139889	-	GU937362
39	<i>Asimina pygmaea</i> (W. Bartram) Dunal	-	GQ139726	-	GQ139868	-	GQ139899	-	GU937356
40	<i>Asimina reticulata</i> Shuttlew. ex Chapm.	-	GQ139713	-	GQ139863	-	GQ139906	-	GU937361
41	<i>Asimina rugelii</i> B. L. Rob.	-	GQ139706	-	GQ139846	JQ513887	GQ139881	-	GU937354
42	<i>Asimina tetramera</i> Small	-	GQ139702	-	GQ139870	-	GQ139877	-	GU937350

No.	Voucher information	GenBank accession numbers							
	Taxa name	<i>atpB-rbcL</i>	<i>matK</i>	<i>ndhF</i>	<i>psbA-trnH</i>	<i>rbcL</i>	<i>trnL-F</i>	<i>trnS-G</i>	<i>ycfI</i>
43	<i>Asimina triloba</i> (L.) Dunal	EF179252	GQ139711	AY218171	AY841430	AY743441	AY743460	EF179329	GU937349
44	<i>Asteranthe asterias</i> (S. Moore) Engl. & Diels	-	-	EU169711	EU169734	EU169757	EU169779	EU169801	-
45	<i>Bocagea longepedunculata</i> Mart. Blo181	MF322668*	MF322630*	MF322640*	MF322655*	MF322645*	MF322659*	-	-
46	<i>Bocagea longepedunculata</i> Mart. Blo460	MF322669*	MF322631*	MF322641*	-	MF322646*	-	-	-
47	<i>Bocagea viridis</i> A. St.-Hil.	MF322670*	MF322632*	MF322642*	-	MF322647*	MF322660*	-	-
48	<i>Bocageopsis canescens</i> (Spruce ex Benth.) R. E. Fr.	-	JQ690409	JQ690410	JQ690411	JQ690407	JQ690408	-	JQ690412
49	<i>Bocageopsis multiflora</i> (Mart.) R. E. Fr.	-	DQ018262	-	AY841445	AY841600	AY841678	-	-
50	<i>Bocageopsis pleiosperma</i> Maas	-	-	-	AY841446	AY841601	AY841679	-	-
51	<i>Boutiquea platypetala</i> (Engl. & Diels) Le Thomas	MF322671*	MF322633*	MF322643*	-	MF322648*	MF322661*	-	-
52	<i>Cananga brandisiana</i> (Pierre) I. M. Turner	-	HM173744	-	HM173715	HM173801	HM173772	-	-
53	<i>Cananga odorata</i> (Lam.) Hook. f. & Thomson	AY841372	AY220438	AY841403	AY841431	AY841602	AY841680	AY841548	-
54	<i>Cardiopetalum calophyllum</i> Schltldl.	MF322672*	MF322634*	MF322644*	-	MF322649*	MF322662*	-	-
55	<i>Cardiopetalum surinamense</i> R. E. Fr.	MF322673*	MF322635*	-	-	MF322650*	MF322663*	-	-
56	<i>Cleistochlamys kirkii</i> (Benth.) Oliv.	-	-	KM924880	KM924981	-	KM924948	-	-
57	<i>Cleistopholis glauca</i> Pierre ex Engl. & Diels	AY841373	AY841395	AY841404	AY841432	AY841603	AY841681	AY841549	-
58	<i>Coelocaryon preussii</i> Warb.	-	AY743475	JQ437546	-	AY743437	AY743456	-	-
59	<i>Crematosperma brevipes</i> (DC.) R. E. Fr.	AY841374	AY743550	AY841405	AY841447	AY743527	AY743573	AY841552	-
60	<i>Crematosperma bullatum</i> Pirie	-	AY743560	DQ018140	AY841459	DQ018235	DQ018188	-	-
61	<i>Crematosperma cauliflorum</i> R. E. Fr.	AY841375	AY743542	AY841406	DQ018240	AY743519	AY743565	AY841553	-
62	<i>Crematosperma cenepense</i> Pirie & Zapata	-	DQ018277	-	DQ018257	DQ018236	-	-	-
63	<i>Crematosperma gracilipes</i> R. E. Fr.	-	AY743544	-	-	AY743521	AY743567	-	-

No.	Voucher information	GenBank accession numbers							
	Taxa name	<i>atpB-rbcL</i>	<i>matK</i>	<i>ndhF</i>	<i>psbA-trnH</i>	<i>rbcL</i>	<i>trnL-F</i>	<i>trnS-G</i>	<i>ycf1</i>
64	<i>Crematosperma leiophyllum</i> (Diels) R. E. Fr.	-	AY743546	DQ018123	AY841449	AY743523	AY743569	-	-
65	<i>Crematosperma macrocarpum</i> Maas	-	AY743551	DQ018129	AY841450	AY743528	AY743574	-	-
66	<i>Crematosperma magdalenae</i> Pirie	-	DQ018279	DQ018143	AY841460	AY841521	AY841535	-	-
67	<i>Crematosperma megalophyllum</i> R. E. Fr.	-	AY743545	DQ018121	AY841451	AY743517	AY743563	-	-
68	<i>Crematosperma microcarpum</i> R. E. Fr.	-	AY743539	DQ018120	AY841452	AY743516	AY319172	-	-
69	<i>Crematosperma monospermum</i> (Rusby) R. E. Fr.	-	AY743547	DQ018124	AY841453	AY743524	AY743570	-	-
70	<i>Crematosperma napoense</i> Pirie	-	DQ018265	DQ018127	DQ018242	DQ018224	DQ018177	-	-
71	<i>Crematosperma novogranatense</i> R. E. Fr.	-	AY743552	-	-	AY743529	AY743575	-	-
72	<i>Crematosperma oblongum</i> R. E. Fr.	-	DQ018266	DQ018128	DQ018241	DQ018225	DQ018178	-	-
73	<i>Crematosperma panamense</i> Maas	-	AY743553	DQ018131	DQ018246	AY743530	AY743576	-	-
74	<i>Crematosperma pedunculatum</i> (Diels) R. E. Fr.	-	DQ018269	DQ018135	DQ018248	DQ018228	DQ018181	-	-
75	<i>Crematosperma pendulum</i> (Ruiz & Pav.) R. E. Fr.	-	AY743554	DQ018132	DQ018247	DQ018233	DQ018186	-	-
76	<i>Crematosperma peruvianum</i> R. E. Fr.	-	AY743557	-	-	AY743534	AY743580	-	-
77	<i>Crematosperma venezuelanum</i> Pirie	-	AY743559	DQ018134	AY841457	AY743536	AY743582	-	-
78	<i>Crematosperma westrae</i> Pirie	-	DQ018272	DQ018136	DQ018252	DQ018231	DQ018184	-	-
79	<i>Crematosperma yamayakatense</i> Pirie	-	DQ018267	DQ018139	DQ018244	DQ018226	DQ018179	-	-
80	<i>Cyathocalyx annamensis</i> Ast	-	HM173748	-	HM173719	HM173805	HM173776	-	-
81	<i>Cyathocalyx globosus</i> Merr.	-	HM173725	-	HM173696	HM173782	HM173754	-	-
82	<i>Cyathocalyx harmandii</i> (Finet & Gagnep.) R. J. Wang & R. M. K. Saunders	-	HM173726	-	HM173697	HM173783	HM173755	-	-

No.	Voucher information	GenBank accession numbers							
	Taxa name	<i>atpB-rbcL</i>	<i>matK</i>	<i>ndhF</i>	<i>psbA-trnH</i>	<i>rbcL</i>	<i>trnL-F</i>	<i>trnS-G</i>	<i>ycf1</i>
83	<i>Cyathocalyx magnifructus</i> R. J. Wang & R. M. K. Saunders	-	HM173730	-	HM173701	HM173787	HM173759	-	-
84	<i>Cyathocalyx martabanicus</i> Hook. f. & Thomson	EF179253	DQ125054	EF179288	DQ125120	AY841605	AY841683	EF179330	-
85	<i>Cyathocalyx sumatranus</i> Scheff.	-	HM173737	-	HM173708	HM173794	HM173766	-	-
86	<i>Cyathocalyx zeylanicus</i> Champ. ex Hook. f. & Thomson	-	HM173739	-	HM173710	HM173796	HM173768	-	-
87	<i>Cymbopetalum brasiliense</i> (Vell.) Benth. ex Baill.	EF179254	DQ125055	EF179289	DQ125121	AY841608	AY841686	EF179331	-
88	<i>Cymbopetalum torulosum</i> G. E. Schatz	-	GQ139720	-	GQ139859	AY743442	GQ139894	-	-
89	<i>Dasymaschalon acuminatum</i> Jing Wang & R. M. K. Saunders	-	JQ768546	JQ768587	JQ768625	JQ768666	JQ768706	-	-
90	<i>Dasymaschalon borneense</i> Nurmawati	-	JQ768547	-	JQ768626	JQ768667	JQ768707	-	-
91	<i>Dasymaschalon clusiflorum</i> (Merr.) Merr.	-	JQ768548	-	JQ768627	JQ768668	JQ768708	-	-
92	<i>Dasymaschalon dasymaschalum</i> (Blume) I. M. Turner	-	JQ768549	JQ768588	JQ768628	JQ768669	JQ768709	-	-
93	<i>Dasymaschalon ellipticum</i> Nurmawati	-	JQ768550	JQ768589	JQ768629	JQ768670	JQ768710	-	-
94	<i>Dasymaschalon evrardii</i> Ast	-	JQ768551	JQ768590	JQ768630	JQ768671	JQ768711	-	-
95	<i>Dasymaschalon glaucum</i> Merr. & Chun	-	JQ768553	JQ768592	JQ768632	JQ768673	JQ768713	-	-
96	<i>Dasymaschalon lomentaceum</i> Finet & Gagnep.	-	EU715065	JQ768593	EU715087	JQ768674	JQ768714	-	-
97	<i>Dasymaschalon longiusculum</i> (Bân) Jing Wang & R. M. K. Saunders	-	JQ768556	-	JQ768635	JQ768676	JQ768716	-	-
98	<i>Dasymaschalon macrocalyx</i> Finet & Gagnep.	EF179255	EF179277	EF179290	EF179313	AY841610	AY841688	EF179332	-

No.	Voucher information	GenBank accession numbers							
	Taxa name	<i>atpB-rbcL</i>	<i>matK</i>	<i>ndhF</i>	<i>psbA-trnH</i>	<i>rbcL</i>	<i>trnL-F</i>	<i>trnS-G</i>	<i>ycfI</i>
99	<i>Dasymaschalon megalanthum</i> (Merr.) Jing Wang & R.M.K. Saunders	-	JQ768558	JQ768596	JQ768637	JQ768678	JQ768718	-	-
100	<i>Dasymaschalon oblongatum</i> Merr.	-	JQ768559	JQ768597	JQ768638	JQ768679	JQ768719	-	-
101	<i>Dasymaschalon robinsonii</i> Ast	-	JQ768561	-	JQ768640	JQ768681	JQ768721	-	-
102	<i>Dasymaschalon rostratum</i> Merr. & Chun	-	JQ768562	JQ768599	JQ768641	JQ768682	JQ768722	-	-
103	<i>Dasymaschalon sootepense</i> Craib	-	AY743481	JQ768600	JQ768642	AY743443	AY743462	-	-
104	<i>Dasymaschalon trichophorum</i> Merr.	-	JQ768565	JQ768602	JQ768644	JQ768685	JQ768725	-	-
105	<i>Dasymaschalon wallichii</i> (Hook. f. & Thomson) Jing Wang & R. M. K. Saunders	-	JQ768566	-	JQ768645	JQ768686	JQ768726	-	-
106	<i>Dasymaschalon yunnanense</i> (Hu) Bân	-	JQ768560	JQ768598	JQ768639	JQ768680	JQ768720	-	-
107	<i>Dendrokingstonia gardneri</i> Chaowasku	-	KJ418391	KJ418385	KJ418399	KJ418381	KJ418406	-	KJ418378
108	<i>Dendrokingstonia nervosa</i> (Hook. f. & Thomson) Rauschert	-	KJ418392	KJ418386	KJ418400	KJ418382	KJ418407	-	-
109	<i>Desmopsis bibracteata</i> (B. L. Rob.) Saff.	-	JQ586480	-	-	JQ590148	-	-	-
110	<i>Desmopsis microcarpa</i> R. E. Fr.	-	AY518804	JX544771	AY841461	-	AY319173	-	JX544758
111	<i>Desmopsis panamensis</i> (B. L. Rob.) Saff.	-	GQ981981	-	GQ982207	GQ981723	-	-	-
112	<i>Desmopsis schippii</i> Standl.	-	AY518805	JQ723786	-	JQ590166	AY319174	-	-
113	<i>Desmos chinensis</i> Lour.	-	JQ768567	JQ768603	JQ768646	JQ762414	JQ762415	-	-
114	<i>Desmos cochinchinensis</i> Lour.	-	JQ768568	JQ768604	JQ768647	JQ768688	JQ768728	-	-
115	<i>Desmos dinhensis</i> (Finet & Gagnep.) Merr.	-	JQ768569	JQ768605	JQ768648	-	JQ768729	-	-
116	<i>Desmos dumosus</i> (Roxb.) Saff.	-	JQ768570	JQ768606	JQ768649	JQ768689	JQ768730	-	-
117	<i>Desmos elegans</i> (Thwaites) Saff.	-	JQ768571	-	JQ768650	JQ768690	JQ768731	-	-
118	<i>Desmos goezeanus</i> (F. Muell.) Jessup	-	JQ768572	JQ768607	JQ768651	JQ768691	JQ768732	-	-

No.	Voucher information	GenBank accession numbers							
	Taxa name	<i>atpB-rbcL</i>	<i>matK</i>	<i>ndhF</i>	<i>psbA-trnH</i>	<i>rbcL</i>	<i>trnL-F</i>	<i>trnS-G</i>	<i>ycfI</i>
119	<i>Desmos wardianus</i> (F. M. Bailey) Jessup	-	JQ768574	JQ768608	JQ768653	JQ768693	JQ768734	-	-
120	<i>Diclinanona tessmannii</i> Diels	-	DQ125056	-	-	AY841611	AY841689	-	-
121	<i>Dielsiothamnus divaricatus</i> (Diels) R. E. Fr.	-	-	-	EU169736	EU169759	EU169781	EU169803	-
122	<i>Disepalum aciculare</i> D. M. Johnson	-	KT452821	KT452832	-	-	KT452843	-	KT452854
123	<i>Disepalum anomalum</i> Hook. f.	-	KT452819	KT452830	-	-	KT452841	-	KT452852
124	<i>Disepalum coronatum</i> Becc.	-	KT452820	KT452831	-	-	KT452842	-	KT452853
125	<i>Disepalum longipes</i> King	-	KT452822	KT452833	-	-	KT452844	-	KT452855
126	<i>Disepalum petelotii</i> (Merr.) D. M. Johnson	-	KT452813	KT452824	-	-	KT452835	-	KT452846
127	<i>Disepalum plagioneurum</i> (Diels) D. M. Johnson	-	KT452814	KT452825	-	-	KT452836	-	KT452847
128	<i>Disepalum platypetalum</i> Merr.	EF179257	DQ125057	EF179292	DQ125122	-	-	EF179334	-
129	<i>Disepalum pulchrum</i> (King) J. Sinclair	-	GQ139736	-	GQ139875	JQ513888	GQ139909	-	GU937383
130	<i>Drepananthus apoensis</i> Elmer	-	HM173721	-	HM173692	HM173778	HM173750	-	-
131	<i>Drepananthus biovulatus</i> (Boerl.) Survesw. & R. M. K. Saunders	-	HM173722	-	HM173693	AY841604	AY841682	-	-
132	<i>Drepananthus cauliflorus</i> (Lauterb. & K. Schum.) Survesw. & R. M. K. Saunders	-	HM173723	-	HM173694	HM173780	HM173752	-	-
133	<i>Drepananthus deltoideus</i> (Airy Shaw) Survesw. & R. M. K. Saunders	-	HM173724	-	HM173695	HM173781	HM173753	-	-
134	<i>Drepananthus havilandii</i> (Boerl.) Survesw. & R. M. K. Saunders	-	HM173727	-	HM173698	HM173784	HM173756	-	-
135	<i>Drepananthus hexagynus</i> (Miq.) Survesw. & R. M. K. Saunders	-	HM173740	-	HM173711	HM173797	HM173769	-	-

No.	Voucher information	GenBank accession numbers							
	Taxa name	<i>atpB-rbcL</i>	<i>matK</i>	<i>ndhF</i>	<i>psbA-trnH</i>	<i>rbcL</i>	<i>trnL-F</i>	<i>trnS-G</i>	<i>ycf1</i>
136	<i>Drepananthus kingii</i> (Boerl. ex Koord.) Survesw. & R. M. K. Saunders	-	HM173728	-	HM173699	HM173785	HM173757	-	-
137	<i>Drepananthus magnificus</i> (Diels) Survesw. & R. M. K. Saunders	-	HM173729	-	HM173700	HM173786	HM173758	-	-
138	<i>Drepananthus obtusifolius</i> (Becc. & Scheff.) Survesw. & R. M. K. Saunders	-	HM173732	-	HM173703	HM173789	HM173761	-	-
139	<i>Drepananthus pahangensis</i> M. R. Hend.	-	HM173741	-	HM173712	HM173798	-	-	-
140	<i>Drepananthus petiolatus</i> (Diels) Survesw. & R. M. K. Saunders	-	HM173743	-	HM173714	HM173800	HM173771	-	-
141	<i>Drepananthus polycarpus</i> (C. T. White & W. D. Francis) Survesw. & R. M. K. Saunders	-	HM173733	-	HM173704	HM173790	HM173762	-	-
142	<i>Drepananthus pruniferus</i> Maingay ex Hook. f. & Thomson	-	HM173734	-	HM173705	HM173791	HM173763	-	-
143	<i>Drepananthus pubescens</i> (Scheff.) Survesw. & R. M. K. Saunders	-	HM173735	-	HM173706	HM173792	HM173764	-	-
144	<i>Drepananthus ridleyi</i> (King) Survesw. & R. M. K. Saunders	-	HM173736	-	HM173707	HM173793	HM173765	-	-
145	<i>Drepananthus vitiensis</i> (A. C. Sm.) Survesw. & R. M. K. Saunders	-	HM173738	-	HM173709	HM173795	HM173767	-	-
146	<i>Duckeanthus grandiflorus</i> R. E. Fr.	MF322674*	MF322636*	-	-	MF322651*	MF322664*	-	-
147	<i>Duguetia bahiensis</i> Maas	-	AY740532	-	-	AY738152	AY740564	-	-
148	<i>Duguetia cadaverica</i> Huber	-	AY740533	-	-	AY738153	AY740565	-	-
149	<i>Duguetia calycina</i> Benoist	-	AY740534	-	-	AY738154	AY740566	-	-
150	<i>Duguetia cauliflora</i> R. E. Fr.	-	AY740535	-	-	AY738155	AY740567	-	-

No.	Voucher information	GenBank accession numbers							
	Taxa name	<i>atpB-rbcL</i>	<i>matK</i>	<i>ndhF</i>	<i>psbA-trnH</i>	<i>rbcL</i>	<i>trnL-F</i>	<i>trnS-G</i>	<i>ycfI</i>
151	<i>Duguetia chrysea</i> Maas	-	AY740536	-	AY841435	AY738156	AY841691	-	-
152	<i>Duguetia confinis</i> (Engl. & Diels) Chatrou	-	AY740537	-	-	AY738157	AY740569	-	-
153	<i>Duguetia confusa</i> Maas	-	AY740538	-	-	AY738158	AY740570	-	-
154	<i>Duguetia echinophora</i> R. E. Fr.	-	AY740539	-	-	AY738159	AY740571	-	-
155	<i>Duguetia guianensis</i> R. E. Fr.	-	AY740540	-	-	AY738160	AY740572	-	-
156	<i>Duguetia hadrantha</i> (Diels) R. E. Fr.	EF179258	AY740541	EF179293	DQ125123	AY738161	AY740573	EF179335	-
157	<i>Duguetia lucida</i> Urb.	-	AY740542	-	-	AY738162	AY740574	-	-
158	<i>Duguetia macrocalyx</i> R. E. Fr.	-	AY740543	-	-	AY738163	AY740575	-	-
159	<i>Duguetia macrophylla</i> R. E. Fr.	-	AY740544	-	-	AY738164	AY740576	-	-
160	<i>Duguetia marcgraviana</i> Mart.	-	AY740545	-	-	AY738165	AY740577	-	-
161	<i>Duguetia megalocarpa</i> Maas	-	AY740546	-	-	AY738166	AY740578	-	-
162	<i>Duguetia moricandiana</i> Mart.	-	AY740547	-	-	AY738167	AY740579	-	-
163	<i>Duguetia neglecta</i> Sandwith	-	AY740548	-	-	AY738168	AY740580	-	-
164	<i>Duguetia odorata</i> (Diels) J. F. Macbr.	-	AY740549	-	-	AY738169	AY740581	-	-
165	<i>Duguetia panamensis</i> Standl.	-	AY740550	-	-	AY738170	AY740582	-	-
166	<i>Duguetia peruviana</i> (R. E. Fr.) J. F. Macbr.	-	AY740551	-	-	AY738171	AY740583	-	-
167	<i>Duguetia pycnastera</i> Sandwith	-	AY740552	-	-	AY738172	AY740584	-	-
168	<i>Duguetia quitarensis</i> Benth.	-	AY740553	-	-	AY738173	AY740585	-	-
169	<i>Duguetia riedeliana</i> R. E. Fr.	-	AY740554	-	-	AY738174	AY740586	-	-
170	<i>Duguetia salicifolia</i> R. E. Fr.	-	AY740555	-	-	AY738175	AY740587	-	-
171	<i>Duguetia sessilis</i> (Vell.) Maas	-	AY740556	-	-	AY738176	AY740588	-	-
172	<i>Duguetia sooretamae</i> Maas	-	AY740557	-	DQ861746	AY738177	AY740589	-	-
173	<i>Duguetia staudtii</i> (Engl. & Diels) Chatrou	EF179259	AY740558	EF179294	DQ125124	AY738178	AY740590	EF179336	-

No.	Voucher information	GenBank accession numbers							
	Taxa name	<i>atpB-rbcL</i>	<i>matK</i>	<i>ndhF</i>	<i>psbA-trnH</i>	<i>rbcL</i>	<i>trnL-F</i>	<i>trnS-G</i>	<i>ycfI</i>
174	<i>Duguetia stelechantha</i> (Diels) R. E. Fr.	-	AY740559	-	-	AY738179	AY740591	-	-
175	<i>Duguetia surinamensis</i> R. E. Fr.	-	AY740560	-	FJ038842	AY738180	AY740592	-	-
176	<i>Duguetia ulei</i> (Diels) R. E. Fr.	-	AY740561	-	-	AY738181	AY740593	-	-
177	<i>Duguetia uniflora</i> (DC.) Mart.	-	AY740562	-	-	AY738182	AY740594	-	-
178	<i>Duguetia yeshidan</i> Sandwith	-	AY740563	-	-	AY738183	AY740595	-	-
179	<i>Ephedranthus boliviensis</i> Chatrou & Pirie	-	-	-	-	AY841614	AY841692	-	-
180	<i>Ephedranthus parviflorus</i> S. Moore	-	-	-	AY841462	AY841615	AY841693	-	-
181	<i>Ephedranthus sp</i> Maas et al 8826	AY841376	AY841396	AY841407	AY841463	AY841616	AY841694	AY841554	-
182	<i>Eupomatia bennettii</i> F.Müll.	-	JQ437547	-	-	DQ861790	DQ861842	JQ513885	-
183	<i>Fenerivia angustieliptica</i> (G. E. Schatz & Le Thomas) R. M. K. Saunders	-	JF810373	-	-	JF810385	JF810397	-	-
184	<i>Fenerivia capuronii</i> (Cavaco & Keraudren) R. M. K. Saunders	-	JF810374	-	-	JF810386	JF810398	-	-
185	<i>Fenerivia chapelieri</i> (Baill.) R. M. K. Saunders	-	JF810375	JQ723788	-	JF810387	JF810399	-	-
186	<i>Fenerivia emarginata</i> (Diels) R. M. K. Saunders	-	JF810376	-	-	JF810388	JF810400	-	-
187	<i>Fenerivia ghesquiereana</i> (Cavaco & Keraudren) R. M. K. Saunders	-	JF810377	-	-	JF810389	JF810401	-	-
188	<i>Fenerivia heteropetala</i> Diels	-	JF810378	-	-	JF810390	JF810402	-	-
189	<i>Fenerivia humbertii</i> (Diels) R. M. K. Saunders	-	JF810379	-	-	JF810391	JF810403	-	-
190	<i>Fenerivia madagascariensis</i> (Cavaco & Keraudren) R. M. K. Saunders	-	JF810380	-	-	JF810392	JF810404	-	-
191	<i>Fenerivia oligosperma</i> (Danguy) R. M. K. Saunders	-	JF810381	-	-	JF810393	JF810405	-	-

No.	Voucher information	GenBank accession numbers							
	Taxa name	<i>atpB-rbcL</i>	<i>matK</i>	<i>ndhF</i>	<i>psbA-trnH</i>	<i>rbcL</i>	<i>trnL-F</i>	<i>trnS-G</i>	<i>ycf1</i>
192	<i>Fenerivia richardiana</i> (Baill.) R. M. K. Saunders	-	JF810382	-	-	JF810394	JF810406	-	-
193	<i>Fissistigma glaucescens</i> (Hance) Merr.	-	AY743482	-	-	AY743444	AY743463	-	-
194	<i>Fissistigma polyanthoides</i> (Aug. DC.) Merr.	-	JQ768575	JQ768609	JQ768654	JQ768694	JQ768735	-	-
195	<i>Fissistigma uonicum</i> (Dunn) Merr.	-	-	-	-	AY841617	AY841695	-	-
196	<i>Friesodielsia biglandulosa</i> (Blume) Steenis	-	-	JQ768610	JQ768655	-	JQ768736	-	-
197	<i>Friesodielsia cuneiformis</i> (Blume) Steenis	-	JQ768576	JQ768611	-	JQ768695	JQ768737	-	-
198	<i>Friesodielsia desmoides</i> (Craib) Steenis	-	JQ768577	JQ768612	JQ768656	JQ768696	AY841696	-	-
199	<i>Fusaea longifolia</i> (Aubl.) Saff.	-	FJ514750	-	FJ038844	AY841620	AY841698	-	-
200	<i>Fusaea peruviana</i> R. E. Fr.	EF179260	AY743483	EF179295	AY841436	AY743445	AY743464	EF179337	-
201	<i>Goniothalamus amuyon</i> (Blanco) Merr.	KM818567	KM818518	KM818648	KM818728	KM818839	KM818898	KM81891 6	KM81897 9
202	<i>Goniothalamus andersonii</i> J. Sinclair	KM818519	KM818568	-	KM818711	KM818789	KM818867	KM81894 9	-
203	<i>Goniothalamus angustifolius</i> (A. C. Sm.) B. Xue & R. M. K. Saunders	-	KM818569	KM818632	KM818732	KM818797	KM818878	KM81893 7	KM81898 3
204	<i>Goniothalamus aruensis</i> Scheff.	KM818520	KM818570	KM818640	KM818706	KM818791	KM818868	KM81891 8	-
205	<i>Goniothalamus australis</i> Jessup	KM818521	KM818571	KM818638	KM818709	KM818836	KM818887	KM81891 0	KM81897 3
206	<i>Goniothalamus borneensis</i> Mat-Salleh	KM818522	KM818572	KM818673	-	KM818826	KM818893	KM81895 2	-
207	<i>Goniothalamus bracteosus</i> Bân	-	KM818573	-	KM818730	KM818796	KM818906	KM81896 7	-

No.	Voucher information	GenBank accession numbers							
	Taxa name	<i>atpB-rbcL</i>	<i>matK</i>	<i>ndhF</i>	<i>psbA-trnH</i>	<i>rbcL</i>	<i>trnL-F</i>	<i>trnS-G</i>	<i>ycfI</i>
208	<i>Goniothalamus calcareus</i> Mat-Salleh	-	-	-	KM818717	KM818810	-	KM81892 7	KM81899 4
209	<i>Goniothalamus calvicarpus</i> Craib	KM818523	KM818574	KM818647	KM818702	KM818809	KM818874	KM81893 4	KM81900 5
210	<i>Goniothalamus cardiopetalus</i> (Dalzell) Hook. f. & Thomson	KM818524	KM818575	KM818654	KM818692	KM818799	KM818879	KM81891 2	-
211	<i>Goniothalamus cauliflorus</i> K. Schum.	KM818525	KM818576	KM818663	KM818696	KM818807	KM818869	KM81891 9	-
212	<i>Goniothalamus cheliensis</i> Hu	KM818526	KM818577	KM818661	KM818678	KM818831	KM818901	KM81892 6	KM81899 2
213	<i>Goniothalamus clemensii</i> Bân	-	KM818578	-	KM818736	KM818780	KM818844	KM81891 5	-
214	<i>Goniothalamus costulatus</i> Miq.	-	KM818579	-	KM818737	KM818805	KM818865	KM81894 5	-
215	<i>Goniothalamus dumontetii</i> R. M. K. Saunders & Munzinger	-	KM818580	-	KM818729	KM818840	KM818861	KM81895 4	-
216	<i>Goniothalamus elegans</i> Ast	KM818527	KM818581	KM818676	KM818707	KM818817	KM818850	KM81895 5	KM81899 7
217	<i>Goniothalamus elmeri</i> Merr.	-	KM818582	KM818639	KM818677	KM818811	KM818882	KM81892 4	KM81900 3
218	<i>Goniothalamus expansus</i> Craib	-	KM818583	KM818634	KM818714	KM818829	KM818853	KM81893 1	KM81898 7
219	<i>Goniothalamus fasciculatus</i> Boerl.	KM818528	KM818584	KM818636	-	-	KM818890	KM81895 0	-

No.	Voucher information	GenBank accession numbers							
	Taxa name	<i>atpB-rbcL</i>	<i>matK</i>	<i>ndhF</i>	<i>psbA-trnH</i>	<i>rbcL</i>	<i>trnL-F</i>	<i>trnS-G</i>	<i>ycfI</i>
220	<i>Goniothalamus gardneri</i> Hook. f. & Thomson	KM818529	KM818585	KM818656	KM818704	KM818784	KM818871	KM81892 3	KM81900 1
221	<i>Goniothalamus giganteus</i> Wall. ex Hook. f. & Thomson	KM818530	KM818586	KM818655	KM818698	KM818837	KM818892	KM81896 3	KM81899 6
222	<i>Goniothalamus grandiflorus</i> (Warb.) Boerl.	KM818531	KM818587	KM818637	KM818691	KM818802	KM818851	KM81893 0	-
223	<i>Goniothalamus griffithii</i> Hook. f. & Thomson	KM818532	KM818588	KM818651	KM818701	KM818798	KM818894	KM81893 9	KM81900 0
224	<i>Goniothalamus hookeri</i> Thwaites	KM818533	KM818589	KM818657	KM818734	KM818814	KM818872	KM81895 6	-
225	<i>Goniothalamus howii</i> Merr. & Chun	KM818534	KM818590	-	KM818689	KM818833	KM818886	KM81893 8	KM81898 6
226	<i>Goniothalamus imbricatus</i> (Blume) Koord.	KM818535	KM818591	-	KM818722	KM818806	KM818847	KM81894 6	KM81899 8
227	<i>Goniothalamus kinabaluensis</i> Bân ex Mat-Salleh	KM818536	KM818592	KM818672	KM818684	KM818787	KM818876	KM81893 5	-
228	<i>Goniothalamus laoticus</i> (Fin. & Gagnep.) Tien Ban	KM818537	KM818593	KM818666	KM818699	KM818808	KM818881	KM81895 9	KM81899 3
229	<i>Goniothalamus loerzingii</i> R. M. K. Saunders	-	KM818594	-	KM818724	KM818782	KM818902	KM81894 7	-
230	<i>Goniothalamus macranthus</i> (Kurz) Boerl.	KM818538	KM818595	KM818643	KM818695	KM818792	KM818873	KM81892 8	KM81899 5
231	<i>Goniothalamus macrophyllus</i> (Blume) Hook. f. & Thomson	KM818539	KM818596	KM818665	KM818688	KM818843	KM818897	KM81894 0	KM81900 2

No.	Voucher information	GenBank accession numbers							
	Taxa name	<i>atpB-rbcL</i>	<i>matK</i>	<i>ndhF</i>	<i>psbA-trnH</i>	<i>rbcL</i>	<i>trnL-F</i>	<i>trnS-G</i>	<i>ycf1</i>
232	<i>Goniothalamus maewongensis</i> R. M. K. Saunders & Chalermglin	KM818540	KM818597	KM818659	KM818725	KM818838	KM818888	KM81896 2	KM81897 7
233	<i>Goniothalamus majestatis</i> Keßler	KM818541	KM818598	-	KM818713	KM818788	KM818903	KM81895 8	-
234	<i>Goniothalamus malayanus</i> Hook. f. & Thomson	KM818542	KM818599	KM818650	KM818718	KM818835	KM818891	KM81891 4	KM81900 6
235	<i>Goniothalamus megalocalyx</i> I. M. Turner & R. M. K. Saunders	KM818543	KM818600	KM818645	KM818726	KM818822	KM818885	KM81896 0	KM81900 7
236	<i>Goniothalamus monospermus</i> (A. Gray) R. M. K. Saunders	-	KM818601	-	KM818735	KM818790	-	KM81896 9	-
237	<i>Goniothalamus montanus</i> J. Sinclair	KM818544	KM818602	KM818674	KM818710	KM818813	KM818856	KM81893 2	-
238	<i>Goniothalamus obtusatus</i> (Baill.) R. M. K. Saunders	KM818545	KM818603	KM818660	KM818687	KM818815	KM818883	KM81891 1	KM81898 1
239	<i>Goniothalamus palawanensis</i> C.C. Tang & R. M. K. Saunders	-	KM818604	-	KM818716	KM818793	KM818855	KM81892 5	KM81897 6
240	<i>Goniothalamus parallelivenius</i> Ridl.	KM818546	KM818605	KM818635	KM818683	KM818801	KM818880	KM81894 1	-
241	<i>Goniothalamus repevensis</i> Pierre ex Finet & Gagnep.	KM818547	KM818606	KM818664	KM818723	KM818795	KM818877	KM81893 6	-
242	<i>Goniothalamus reticulatus</i> Thwaites	KM818548	KM818607	-	-	KM818786	-	KM81891 3	-
243	<i>Goniothalamus ridleyi</i> King	KM818549	KM818608	-	KM818739	KM818830	KM818860	KM81895 1	KM81898 5

No.	Voucher information	GenBank accession numbers							
	Taxa name	<i>atpB-rbcL</i>	<i>matK</i>	<i>ndhF</i>	<i>psbA-trnH</i>	<i>rbcL</i>	<i>trnL-F</i>	<i>trnS-G</i>	<i>ycfI</i>
244	<i>Goniothalamus rotundisepalus</i> M. R. Hend.	KM818550	KM818609	KM818649	KM818693	KM818794	KM818857	KM818908	-
245	<i>Goniothalamus rufus</i> Miq.	KM818551	KM818610	-	KM818727	KM818819	KM818848	KM818943	-
246	<i>Goniothalamus sawtehhii</i> C. E. C. Fisch.	KM818552	KM818611	KM818646	KM818680	KM818785	KM818895	KM818942	KM819004
247	<i>Goniothalamus scortechinii</i> King	KM818553	KM818612	KM818670	KM818712	KM818781	KM818845	KM818929	KM818988
248	<i>Goniothalamus sesquipedalis</i> (Wall.) Hook. f. & Thomson	KM818554	KM818613	KM818667	KM818719	KM818825	KM818904	KM818907	KM818984
249	<i>Goniothalamus</i> sp. tcc10	-	KM818614	KM818675	KM818715	KM818821	KM818864	KM818944	KM818980
250	<i>Goniothalamus suaveolens</i> Becc. 466	-	KM818615	-	KM818681	KM818818	KM818884	KM818968	KM818999
251	<i>Goniothalamus suaveolens</i> Becc. tcc32	KM818555	KM818616	-	KM818682	KM818800	KM818858	KM818933	KM818982
252	<i>Goniothalamus tamirensis</i> Pierre ex Finet & Gagnep.	KM818556	KM818617	KM818662	KM818700	KM818832	KM818866	KM818917	KM818990
253	<i>Goniothalamus tapis</i> Miq.	EF179262	DQ125058	EF179297	AY841622	AY841700	EF179339	-	AY841622
254	<i>Goniothalamus tapisoides</i> Mat-Salleh	KM818557	KM818618	KM818641	KM818686	KM818823	KM818899	KM818920	-
255	<i>Goniothalamus tavoyensis</i> Chatterjee	KM818558	KM818619	KM818633	KM818690	KM818841	KM818854	KM818961	-

No.	Voucher information	GenBank accession numbers							
	Taxa name	<i>atpB-rbcL</i>	<i>matK</i>	<i>ndhF</i>	<i>psbA-trnH</i>	<i>rbcL</i>	<i>trnL-F</i>	<i>trnS-G</i>	<i>ycf1</i>
256	<i>Goniothalamus tenuifolius</i> King	KM818559	KM818620	KM818669	KM818694	KM818842	KM818889	KM81890 9	KM81897 4
257	<i>Goniothalamus thomsonii</i> Thwaites	-	KM818621	-	KM818733	KM818834	KM818875	KM81897 1	-
258	<i>Goniothalamus thwaitesii</i> Hook. f. & Thomson	KM818560	KM818622	KM818653	KM818703	-	KM818849	KM81892 2	-
259	<i>Goniothalamus tomentosus</i> R. M. K. Saunders	KM818561	KM818623	-	KM818738	KM818783	KM818846	KM81896 4	-
260	<i>Goniothalamus tortilipetalus</i> M. R. Hend.	-	KM818624	KM818642	KM818708	KM818828	KM818905	KM81894 8	-
261	<i>Goniothalamus touranensis</i> Ast	-	KM818625	-	KM818731	KM818804	KM818870	KM81896 5	-
262	<i>Goniothalamus undulatus</i> Ridl.	KM818562	KM818626	KM818652	KM818679	KM818820	KM818896	KM81892 1	KM81897 8
263	<i>Goniothalamus uvarioides</i> King	-	KM818627	KM818658	KM818685	KM818827	KM818852	KM81896 6	KM81897 5
264	<i>Goniothalamus velutinus</i> Airy Shaw	KM818563	KM818628	KM818644	KM818705	KM818812	KM818900	KM81895 3	KM81898 9
265	<i>Goniothalamus woodii</i> Merr. ex Mat Salleh	KM818564	KM818629	KM818668	KM818720	KM818824	KM818862	KM81897 2	-
266	<i>Goniothalamus wrayi</i> King	KM818565	KM818630	KM818671	KM818721	KM818803	KM818859	KM81895 7	-
267	<i>Goniothalamus wynaadensis</i> (Bedd.) Bedd.	KM818566	KM818631	-	KM818697	KM818816	KM818863	KM81897 0	KM81899 1

No.	Voucher information	GenBank accession numbers							
	Taxa name	<i>atpB-rbcL</i>	<i>matK</i>	<i>ndhF</i>	<i>psbA-trnH</i>	<i>rbcL</i>	<i>trnL-F</i>	<i>trnS-G</i>	<i>ycf1</i>
268	<i>Greenwayodendron oliveri</i> (Engl.) Verdc.	AY841377	AY743489	AY841408	AY841465	AY743451	AY743470	AY841555	-
269	<i>Greenwayodendron suaveolens</i> (Engl. & Diels) Verdc.	-	-	-	AY841466	AY841524	AY319090	-	-
270	<i>Guatteria aeruginosa</i> Standl.	EF179264	AY740909	EF179299	DQ125136	AY740958	AY741007	EF179341	-
271	<i>Guatteria alata</i> Maas & van Setten	-	AY740910	-	DQ125137	AY740959	AY741008	-	-
272	<i>Guatteria allenii</i> R. E. Fr.	-	AY740911	-	DQ125138	DQ861791	DQ861843	-	-
273	<i>Guatteria alta</i> R. E. Fr.	-	DQ125065	-	DQ125139	DQ124941	DQ124999	-	-
274	<i>Guatteria alutacea</i> Diels = <i>Guatteria hirsuta</i> Ruiz & Pav.	-	AY740912	-	DQ125140	AY740961	AY741010	-	-
275	<i>Guatteria amplifolia</i> Triana & Planch.	-	DQ125066	-	DQ125141	DQ124942	DQ125000	-	-
276	<i>Guatteria anomala</i> R. E. Fr.	EF179263	AY740913	EF179298	AY841437	AY740962	AY741011	EF179340	-
277	<i>Guatteria anthracina</i> Scharf & Maas = <i>Guatteria liesneri</i> D. M. Johnson & N. A. Murray	-	DQ861698	-	DQ861748	DQ861792	DQ861844	-	-
278	<i>Guatteria atra</i> Sandwith = <i>Guatteria punctata</i> (Aubl.) R. A. Howard	-	AY740914	-	DQ125142	AY740963	AY741012	-	-
279	<i>Guatteria australis</i> A. St.-Hil.	-	AY740915	-	-	AY740964	AY741013	-	-
280	<i>Guatteria blainii</i> (Griseb.) Urb.	-	AY740916	-	DQ861758	DQ861793	DQ861845	-	-
281	<i>Guatteria blepharophylla</i> Mart.	-	DQ861738	-	DQ861782	DQ861834	DQ861888	-	-
282	<i>Guatteria boliviana</i> H. J. P. Winkl. = <i>Guatteria ucayalina</i> Huber	-	DQ125067	-	DQ125144	DQ124943	DQ125001	-	-
283	<i>Guatteria brevicuspis</i> R. E. Fr. = <i>Guatteria blepharophylla</i> Mart.	-	AY740917	-	DQ125145	AY740966	AY741015	-	-

No.	Voucher information	GenBank accession numbers							
	Taxa name	<i>atpB-rbcL</i>	<i>matK</i>	<i>ndhF</i>	<i>psbA-trnH</i>	<i>rbcL</i>	<i>trnL-F</i>	<i>trnS-G</i>	<i>ycf1</i>
284	<i>Guatteria brevipedicellata</i> R. E. Fr. = <i>Guatteria hirsuta</i> Ruiz & Pav.	-	DQ125068	-	DQ125146	DQ124944	DQ125002	-	-
285	<i>Guatteria burchellii</i> R. E. Fr. = <i>Guatteria ferruginea</i> A. St. -Hil.	-	DQ861701	-	-	DQ861795	DQ861847	-	-
286	<i>Guatteria caribaea</i> Urb.	-	AY740918	-	DQ125149	AY740967	AY741016	-	-
287	<i>Guatteria chiriquiensis</i> R. E. Fr.	-	AY740919	-	DQ125150	AY740968	AY741017	-	-
288	<i>Guatteria citriodora</i> Ducke	-	DQ861702	-	-	DQ861796	DQ861848	-	-
289	<i>Guatteria decurrens</i> R. E. Fr.	-	DQ861703	-	-	DQ861798	DQ861850	-	-
290	<i>Guatteria diospyroides</i> Baill. = <i>Guatteria amplifolia</i> Triana & Planch.	-	AY740920	-	EF179243	AY740969	AY741018	-	-
291	<i>Guatteria discolor</i> R. E. Fr.	-	AY740921	-	DQ125153	AY740970	AY741019	-	-
292	<i>Guatteria dolichopoda</i> Donn. Sm.	-	DQ861704	-	DQ861752	DQ861800	DQ861852	-	-
293	<i>Guatteria dumetorum</i> R. E. Fr. = <i>Guatteria lucens</i> Standl.	-	AY740922	-	DQ125154	DQ861799	DQ861851	-	-
294	<i>Guatteria dusenii</i> R. E. Fr. = <i>Guatteria australis</i> A. St. -Hil.	-	DQ125072	-	DQ125155	DQ124948	DQ125006	-	-
295	<i>Guatteria ecuadorensis</i> R. E. Fr. = <i>Guatteria hirsuta</i> Ruiz & Pav.	-	DQ861706	-	DQ861753	DQ861802	DQ861854	-	-
296	<i>Guatteria elata</i> R. E. Fr.	-	AY740923	-	DQ125156	AY740972	AY741021	-	-
297	<i>Guatteria elegantissima</i> R. E. Fr.	-	AY740924	-	DQ125157	AY740973	AY741022	-	-
298	<i>Guatteria excellens</i> R. E. Fr. = <i>Guatteria guianensis</i> (Aubl.) R. E. Fr.	-	DQ861707	-	DQ861754	DQ861803	DQ861855	-	-
299	<i>Guatteria ferruginea</i> A. St.-Hil.	-	DQ125073	-	DQ125158	DQ124949	DQ125007	-	-

No.	Voucher information	GenBank accession numbers							
	Taxa name	<i>atpB-rbcL</i>	<i>matK</i>	<i>ndhF</i>	<i>psbA-trnH</i>	<i>rbcL</i>	<i>trnL-F</i>	<i>trnS-G</i>	<i>ycf1</i>
300	<i>Guatteria foliosa</i> Benth.	-	AY740925	-	DQ125159	AY740974	AY741023	-	-
301	<i>Guatteria friesiana</i> (W. A. Rodrigues) Erkens & Maas	-	DQ861740	-	DQ861784	DQ861836	DQ861889	-	-
302	<i>Guatteria galeottiana</i> Baill.	-	DQ125074	-	DQ125160	DQ124950	DQ125008	-	-
303	<i>Guatteria glabrescens</i> R. E. Fr. = <i>Guatteria australis</i> A. St. -Hil.	EF179265	AY740926	EF179300	DQ125161	AY740975	AY741024	EF179342	-
304	<i>Guatteria gracilipes</i> R. E. Fr. = <i>Guatteria punctata</i> (Aubl.) R. A. Howard	-	DQ125075	-	DQ125162	DQ124951	DQ125009	-	-
305	<i>Guatteria guianensis</i> (Aubl.) R. E. Fr.	-	AY740927	-	DQ125163	AY740976	AY741025	-	-
306	<i>Guatteria heteropetala</i> Benth. [as <i>Heteropetalum spruceanum</i> in GenBank]	-	DQ861745	-	DQ861789	DQ861841	DQ861894	-	-
307	<i>Guatteria heterotricha</i> R. E. Fr. = <i>Guatteria argentea</i> Erkens & Maas	-	AY740928	-	DQ125164	AY740977	AY741026	-	-
308	<i>Guatteria hilariana</i> var. <i>verruculosa</i> R. E. Fr. = <i>Guatteria australis</i> A.St.-Hil.	-	DQ861710	-	DQ861756	DQ861806	DQ861858	-	-
309	<i>Guatteria hispida</i> (R. E. Fr.) Erkens & Maas	-	DQ861741	-	DQ861785	DQ861837	DQ861890	-	-
310	<i>Guatteria hyposericea</i> Diels = <i>Guatteria scytophylla</i> Diels	-	AY740929	-	DQ125166	AY740978	AY741027	-	-
311	<i>Guatteria inuncta</i> R. E. Fr. = <i>Guatteria amplifolia</i> Triana & Planch.	-	AY740930	-	DQ125167	AY740979	AY741028	-	-
312	<i>Guatteria inundata</i> Mart.	-	AY740931	-	DQ125168	AY740980	AY741029	-	-
313	<i>Guatteria jefensis</i> Barringer	-	AY740932	-	DQ125169	DQ861805	DQ861857	-	-
314	<i>Guatteria juruensis</i> Diels = <i>Guatteria hirsuta</i> Ruiz & Pav.	-	DQ861708	-	-	DQ861804	DQ861856	-	-

No.	Voucher information	GenBank accession numbers							
	Taxa name	<i>atpB-rbcL</i>	<i>matK</i>	<i>ndhF</i>	<i>psbA-trnH</i>	<i>rbcL</i>	<i>trnL-F</i>	<i>trnS-G</i>	<i>ycf1</i>
315	<i>Guatteria kuhlmannii</i> R. E. Fr. = <i>Guatteria cryandra</i> Erkens & Maas	-	DQ861742	-	DQ861786	DQ861838	DQ861891	-	-
316	<i>Guatteria latifolia</i> (Mart.) R. E. Fr.	-	AY740933	-	DQ125170	AY740982	AY741031	-	-
317	<i>Guatteria latisepala</i> R. E. Fr.	-	DQ125077	-	DQ125171	DQ124953	DQ125011	-	-
318	<i>Guatteria lehmannii</i> R. E. Fr. = <i>Guatteria goudotiana</i> Triana & Planch.	-	DQ861711	-	DQ861757	DQ861807	DQ861859	-	-
319	<i>Guatteria liesneri</i> D. M. Johnson & N. A. Murray	-	AY740934	-	DQ125172	AY740983	DQ861860	-	-
320	<i>Guatteria macropus</i> Mart.	-	AY740935	-	DQ125174	AY740984	AY741033	-	-
321	<i>Guatteria maypurensis</i> Kunth	-	AY740936	-	DQ125175	AY740985	DQ861882	-	-
322	<i>Guatteria megalophylla</i> Diels	-	AY740937	-	DQ125176	AY740986	AY741035	-	-
323	<i>Guatteria mexiae</i> R. E. Fr. = <i>Guatteria sellowiana</i> Schltdl.	-	DQ125080	-	DQ125178	DQ124956	DQ125014	-	-
324	<i>Guatteria modesta</i> Diels	-	DQ125081	-	DQ125179	DQ124957	DQ125015	-	-
325	<i>Guatteria multivenia</i> Diels = <i>Guatteria decurrens</i> R. E. Fr.	-	AY740938	-	DQ125180	AY740987	AY741036	-	-
326	<i>Guatteria neglecta</i> (Griseb.) P. Wilson ex Léon & Alain = <i>Guatteria australis</i> A.St.-Hil.	-	DQ861713	-	DQ861759	DQ861810	DQ861862	-	-
327	<i>Guatteria notabilis</i> Mello-Silva & Pirani	-	DQ125082	-	DQ125181	DQ124958	DQ125016	-	-
328	<i>Guatteria oligocarpa</i> Mart.	-	AY740939	-	DQ125182	AY740988	AY741037	-	-
329	<i>Guatteria olivacea</i> R. E. Fr. = <i>Guatteria punctata</i> (Aubl.) R. A. Howard	-	AY740940	-	DQ125183	AY740989	AY741038	-	-
330	<i>Guatteria oliviformis</i> Donn. Sm. = <i>Guatteria verrucosa</i> R. E. Fr.	-	AY740941	-	DQ125184	AY740990	AY741039	-	-

No.	Voucher information	GenBank accession numbers							
	Taxa name	<i>atpB-rbcL</i>	<i>matK</i>	<i>ndhF</i>	<i>psbA-trnH</i>	<i>rbcL</i>	<i>trnL-F</i>	<i>trnS-G</i>	<i>ycf1</i>
331	<i>Guatteria ouregou</i> (Aubl.) Dunal	-	AY740942	-	DQ125185	AY740991	AY741040	-	-
332	<i>Guatteria ovalifolia</i> R. E. Fr. = <i>Guatteria punctata</i> (Aubl.) R. A. Howard	-	DQ861715	-	DQ861761	DQ861812	DQ861864	-	-
333	<i>Guatteria pacifica</i> R. E. Fr.	-	DQ125083	-	DQ125186	DQ124960	DQ125018	-	-
334	<i>Guatteria paraensis</i> R. E. Fr. = <i>Guatteria citriodora</i> Ducke	-	DQ125085	-	DQ125188	DQ124961	DQ125019	-	-
335	<i>Guatteria parvifolia</i> R. E. Fr. = <i>Guatteria australis</i> A.St.-Hil.	-	AY740943	-	DQ861762	AY740992	AY741041	-	-
336	<i>Guatteria pittieri</i> R. E. Fr.	-	AY740944	-	DQ125190	AY740993	AY741042	-	-
337	<i>Guatteria poeppigiana</i> Mart. = <i>Guatteria punctata</i> (Aubl.) R. A. Howard	-	DQ125086	-	DQ125191	DQ124962	DQ125020	-	-
338	<i>Guatteria pogonopus</i> Mart.	-	DQ125087	-	DQ125192	DQ124963	DQ125021	-	-
339	<i>Guatteria pohliana</i> Schltdl.	-	DQ125088	-	DQ125193	DQ124964	DQ125022	-	-
340	<i>Guatteria polyantha</i> R. E. Fr.	-	DQ125089	-	DQ125194	DQ124965	DQ125023	-	-
341	<i>Guatteria polycarpa</i> R. E. Fr. = <i>Guatteria australis</i> A.St.-Hil.	-	DQ125090	-	DQ125195	DQ124966	DQ125024	-	-
342	<i>Guatteria pubens</i> (Mart.) R. E. Fr.	-	DQ125091	-	DQ125196	DQ124967	DQ125025	-	-
343	<i>Guatteria pudica</i> N. Zamora & Maas	JQ513884	AY740945	JQ769093	DQ125197	AY740994	AY741043	-	-
344	<i>Guatteria punctata</i> (Aubl.) R. A. Howard	-	AY740946	-	DQ125198	AY740995	AY741044	-	-
345	<i>Guatteria puncticulata</i> R. E. Fr. = <i>Guatteria modesta</i> Diels	-	AY740947	-	DQ125199	AY740996	AY741045	-	-
346	<i>Guatteria ramiflora</i> (D. R. Simpson) Erkens & Maas	-	DQ125064	-	DQ125135	DQ124940	DQ124998	-	-

No.	Voucher information	GenBank accession numbers							
	Taxa name	<i>atpB-rbcL</i>	<i>matK</i>	<i>ndhF</i>	<i>psbA-trnH</i>	<i>rbcL</i>	<i>trnL-F</i>	<i>trnS-G</i>	<i>ycf1</i>
347	<i>Guatteria recurvisepala</i> R. E. Fr. = <i>Guatteria ucayalina</i> Huber	-	AY740948	-	DQ125200	AY740997	AY741046	-	-
348	<i>Guatteria reflexa</i> R. E. Fr. = <i>Guatteria australis</i> A.St.-Hil.	-	DQ125092	-	DQ125201	DQ124968	DQ125026	-	-
349	<i>Guatteria rigida</i> R. E. Fr.	-	DQ861718	-	-	DQ861814	DQ861867	-	-
350	<i>Guatteria rigidipes</i> R. E. Fr. = <i>Guatteria dolichopoda</i> Donn. Sm.	-	DQ125094	-	DQ125203	DQ124970	DQ125028	-	-
351	<i>Guatteria riparia</i> R. E. Fr. = <i>Guatteria inundata</i> Mart.	-	DQ861719	-	DQ861764	DQ861815	DQ861868	-	-
352	<i>Guatteria rotundata</i> Maas & van Setten	-	AY740949	-	DQ125204	AY740998	AY741047	-	-
353	<i>Guatteria rupestris</i> Mello-Silva & Pirani	-	AY740950	-	DQ125205	AY740999	AY741048	-	-
354	<i>Guatteria sabuletorum</i> R. E. Fr.	-	DQ861721	-	DQ861766	DQ861817	DQ861870	-	-
355	<i>Guatteria saffordiana</i> Pittier	-	DQ861720	-	DQ861765	DQ861816	DQ861869	-	-
356	<i>Guatteria salicifolia</i> R. E. Fr.	-	AY740951	-	-	AY741000	AY741049	-	-
357	<i>Guatteria scandens</i> Ducke	-	DQ125095	-	DQ125207	DQ124971	DQ125029	-	-
358	<i>Guatteria schlechtendaliana</i> Mart. = <i>Guatteria pogonopus</i> Mart.	-	DQ125096	-	DQ125208	DQ124972	DQ125030	-	-
359	<i>Guatteria schomburgkiana</i> Mart. = <i>Guatteria citriodora</i> Ducke	-	AY740952	-	DQ125209	AY741001	DQ861871	-	-
360	<i>Guatteria schunkevigoi</i> D. R. Simpson = <i>Guatteria ucayalina</i> Huber	-	DQ125097	-	DQ125210	DQ124973	DQ125031	-	-
361	<i>Guatteria scytophylla</i> Diels	-	AY740953	-	DQ125211	AY741002	AY741051	-	-
362	<i>Guatteria sellowiana</i> Schtdl.	-	AY740954	-	DQ125212	AY741003	AY841702	-	-

No.	Voucher information	GenBank accession numbers							
	Taxa name	<i>atpB-rbcL</i>	<i>matK</i>	<i>ndhF</i>	<i>psbA-trnH</i>	<i>rbcL</i>	<i>trnL-F</i>	<i>trnS-G</i>	<i>ycfI</i>
363	<i>Guatteria sessilicarpa</i> Maas & van Setten	-	AY740955	-	DQ125214	DQ124974	DQ125032	-	-
364	<i>Guatteria sessilis</i> R. E. Fr. = <i>Guatteria schomburgkiana</i> Mart.	-	DQ125099	-	DQ125215	DQ124975	DQ125033	-	-
365	<i>Guatteria sordida</i> var. <i>ovalis</i> R. E. Fr. = <i>Guatteria australis</i> A.St.-Hil.	-	DQ125100	-	DQ125216	DQ124976	DQ125034	-	-
366	<i>Guatteria sphaerantha</i> R. E. Fr. = <i>Guatteria pittieri</i> R. E. Fr.	-	DQ125101	-	DQ125217	DQ124977	DQ125035	-	-
367	<i>Guatteria stipitata</i> R. E. Fr. = <i>Guatteria ucayalina</i> Huber.	-	DQ125102	-	DQ125218	DQ124978	DQ125036	-	-
368	<i>Guatteria subsessilis</i> Mart.	-	DQ125103	-	DQ125219	DQ124979	DQ125037	-	-
369	<i>Guatteria talamancana</i> N. Zamora & Maas	-	DQ861729	-	DQ861773	DQ861825	DQ861878	-	-
370	<i>Guatteria tomentosa</i> Rusby 4494 = <i>Guatteria trichocarpa</i> Erkens & Maas	-	DQ861737	-	DQ861781	DQ861833	DQ861886	-	-
371	<i>Guatteria tomentosa</i> Rusby 9521	-	DQ861730	-	DQ861774	DQ861826	DQ861879	-	-
372	<i>Guatteria tonduzii</i> Diels = <i>Guatteria dolichopoda</i> Donn. Sm.	-	AY740956	-	DQ125228	AY741005	AY741054	-	-
373	<i>Guatteria trichoclonia</i> Diels = <i>Guatteria tomentosa</i> Rusby	-	DQ125112	-	DQ125229	DQ861827	DQ125046	-	-
374	<i>Guatteria ucayaliana</i> Diels	-	DQ861732	-	DQ861776	DQ861828	DQ861881	-	-
375	<i>Guatteria venezuelana</i> R. E. Fr.	-	DQ125113	-	DQ125230	DQ861831	DQ125047	-	-
376	<i>Guatteria verruculosa</i> R. E. Fr.	-	DQ125114	-	DQ125231	DQ124990	DQ125048	-	-
377	<i>Guatteria villosissima</i> A. St.-Hil.	-	AY740957	-	DQ125232	AY741006	AY741055	-	-
378	<i>Guatteria wachenheimii</i> Benoist	-	DQ125115	-	DQ125233	DQ124991	DQ125049	-	-

No.	Voucher information	GenBank accession numbers							
	Taxa name	<i>atpB-rbcL</i>	<i>matK</i>	<i>ndhF</i>	<i>psbA-trnH</i>	<i>rbcL</i>	<i>trnL-F</i>	<i>trnS-G</i>	<i>ycfI</i>
379	<i>Guatteria zamorae</i> Erkens & Maas	-	DQ861736	-	DQ861780	DQ861832	DQ861885	-	-
380	<i>Hexalobus crispiflorus</i> A. Rich.	-	-	EU169713	EU169737	EU169760	EU169782	EU169804	-
381	<i>Hexalobus salicifolius</i> Engl.	-	-	EU169714	EU169738	EU169761	EU169783	EU169805	-
382	<i>Hornschuchia citriodora</i> D. M. Johnson	-	-	-	-	AY841625	AY841703	-	-
383	<i>Huberantha cerasoides</i> (Roxb.) Chaowasku	-	AY518854	JQ889985	JQ889980	-	AY319131	-	JQ723950
384	<i>Huberantha decora</i> (Diels) Chaowasku	-	-	JX544879	JX544859	-	JX544869	-	JX544849
385	<i>Huberantha henrici</i> (Diels) Chaowasku	-	-	JX544880	JX544860	-	JX544870	-	JX544850
386	<i>Huberantha jenkinsii</i> (Hook. f. & Thomson) Chaowasku	-	-	JX544842	JX544812	-	JX544803	-	JX544821
387	<i>Huberantha korinti</i> (Dunal) Chaowasku	EU522345	EU522234	JX544877	EU522124	EU522289	EU522179	-	JX544847
388	<i>Huberantha nitidissima</i> (Dunal) Chaowasku	-	JQ889989	JQ889986	JQ889981	-	JQ889988	-	JQ889976
389	<i>Huberantha pendula</i> (Capuron ex G. E. Schatz & Le Thomas) Chaowasku	-	AY518852	JQ889987	JQ889982	-	AY319144	-	JQ889977
390	<i>Huberantha perrieri</i> (Cavaco & Keraudren) Chaowasku	-	-	JX544881	JX544861	-	JX544871	-	JX544851
391	<i>Huberantha rumphii</i> (Blume ex Hensch.) Chaowasku	-	AY518791	JX544841	JX544811	-	AY319145	-	JX544820
392	<i>Huberantha stuhlmannii</i> (Engl.) Chaowasku	-	AY518853	JX544882	JX544862	-	AY319149	-	JX544852
393	<i>Huberantha tanganyikensis</i> (Vollesen) Chaowasku	-	-	JX544883	JX544863	-	JX544872	-	JX544853
394	<i>Isolona campanulata</i> Engl. & Diels	EF179266	AY238963	EF179301	DQ125127	AY238954	EF179318	EF179343	-
395	<i>Isolona capuronii</i> Cavaco & Keraudren	-	-	-	EU216662	-	EU216708	EU216617	-
396	<i>Isolona cauliflora</i> Verdc.	-	-	EU169716	EU169739	EU169762	EU169784	EU169807	-

No.	Voucher information	GenBank accession numbers							
	Taxa name	<i>atpB-rbcL</i>	<i>matK</i>	<i>ndhF</i>	<i>psbA-trnH</i>	<i>rbcL</i>	<i>trnL-F</i>	<i>trnS-G</i>	<i>ycf1</i>
397	<i>Isolona congolana</i> (De Wild. & T. Durand) Engl. & Diels 3852	-	-	EU216637	EU216658	-	EU216704	EU216613	-
398	<i>Isolona congolana</i> (De Wild. & T. Durand) Engl. & Diels 9550	-	-	EU216644	EU216668	-	EU216714	EU216623	-
399	<i>Isolona cooperi</i> Hutch. & Dalziel ex G. P. Cooper & Record	-	-	EU216636	EU216657	AY841626	AY841704	EU216612	-
400	<i>Isolona dewevrei</i> (De Wild. & T. Durand) Engl. & Diels	-	-	EU216645	EU216669	-	EU216715	EU216624	-
401	<i>Isolona ghesquierei</i> Cavaco & Keraudren	-	-	-	EU216663	-	EU216709	EU216618	-
402	<i>Isolona heinsenii</i> Engl. & Diels	-	-	EU216640	EU216664	-	EU216710	EU216619	-
403	<i>Isolona hexaloba</i> Pierre ex Engl. & Diels	-	-	EU169717	EU169740	EU169763	EU169785	EU169808	-
404	<i>Isolona linearis</i> Couvreur	-	-	EU216641	EU216665	-	EU216711	EU216620	-
405	<i>Isolona perrieri</i> Diels	-	-	EU216639	EU216661	-	EU216707	EU216616	-
406	<i>Isolona pleurocarpa</i> Diels	-	-	EU216642	EU216666	-	EU216712	EU216621	-
407	<i>Isolona thonneri</i> (De Wild. & T. Durand) Engl. & Diels	-	-	EU216643	EU216667	-	EU216713	EU216622	-
408	<i>Isolona zenkeri</i> Engl.	-	-	EU216638	EU216660	-	EU216705	EU216614	-
409	<i>Klarobelia candida</i> Chatrou	-	-	-	AY841467	AY841525	AY841539	-	-
410	<i>Klarobelia cauliflora</i> Chatrou	-	-	-	AY841468	AY841627	AY841705	-	-
411	<i>Klarobelia inundata</i> Chatrou	AY841378	AY743490	AY841409	AY841469	AY743452	AY743471	AY841556	-
412	<i>Klarobelia megalocarpa</i> Chatrou	-	AY518866	-	AY841470	-	AY319176	-	-
413	<i>Klarobelia stipitata</i> Chatrou	-	-	-	AY841472	AY841628	AY841706	-	-
414	<i>Klarobelia</i> sp.	-	-	-	AY841471	AY841526	AY841540	-	-

No.	Voucher information	GenBank accession numbers							
	Taxa name	<i>atpB-rbcL</i>	<i>matK</i>	<i>ndhF</i>	<i>psbA-trnH</i>	<i>rbcL</i>	<i>trnL-F</i>	<i>trnS-G</i>	<i>ycf1</i>
415	<i>Letestudoxa bella</i> Pellegr.	EF179267	DQ125059	EF179302	DQ125128	AY841629	AY841707	EF179344	-
416	<i>Letestudoxa glabrifolia</i> Chatrou & Repetur	-	-	-	-	AY841630	AY841708	-	-
417	<i>Lettowianthus stellatus</i> Diels	-	-	-	EU169730	EU169753	EU169775	EU169797	-
418	<i>Liriodendron chinense</i> (Hemsl.) Sarg.	-	-	-	AY841424	AY841593	AY841670	-	-
419	<i>Maasia discolor</i> (Diels) Mols, Keßler & Rogstad	AY841385	AY518872	AY841416	AY841500	-	AY319135	AY841563	-
420	<i>Maasia glauca</i> (Hassk.) Mols, Keßler & Rogstad	-	AY518871	-	AY841501	GQ248676	AY319137	-	-
421	<i>Maasia multinervis</i> (Diels) Mols, Keßler & Rogstad	-	JF810383	-	-	JF810395	JF810407	-	-
422	<i>Maasia ovalifolia</i> (Rogstad) Mols, Keßler & Rogstad	-	JF810384	-	-	JF810396	JF810408	-	-
423	<i>Maasia sumatrana</i> (Miq.) Mols, Keßler & Rogstad	AY841387	AY518873	AY841418	AY841503	-	AY319153	AY841565	-
424	<i>Magnolia kobus</i> DC.	-	AY743476	-	AY841425	AY743438	AY743457	-	-
425	<i>Malmea dielsiana</i> R. E. Fr.	AY841379	AY238964	AY841410	AY841473	AY238955	AY319177	AY841557	-
426	<i>Malmea dimera</i> Chatrou	-	-	-	AY841474	AY841631	AY841709	-	-
427	<i>Malmea</i> sp. Chatrou et al 8	AY841380	AY841397	AY841411	AY841475	AY841527	AY841541	AY841558	-
428	<i>Malmea surinamensis</i> Chatrou	-	AY743491	-	AY841476	AY743453	AY743472	-	-
429	<i>Marsypopetalum crassum</i> (R. Parker) B. Xue & R. M. K. Saunders	-	HQ286571	JQ723792	-	HQ286577	HQ286583	-	JQ723929
430	<i>Marsypopetalum littorale</i> (Blume) B. Xue & R. M. K. Saunders	-	AY518835	JX544827	JX544804	-	AY319140	-	JX544813

No.	Voucher information	GenBank accession numbers							
	Taxa name	<i>atpB-rbcL</i>	<i>matK</i>	<i>ndhF</i>	<i>psbA-trnH</i>	<i>rbcL</i>	<i>trnL-F</i>	<i>trnS-G</i>	<i>ycfI</i>
431	<i>Marsypopetalum lucidum</i> (Merr.) B. Xue & R. M. K. Saunders	-	HQ286572	-	-	HQ286578	HQ286584	-	-
432	<i>Marsypopetalum triste</i> (Pierre) B. Xue & R. M. K. Saunders	-	HQ286573	-	-	HQ286579	HQ286585	-	-
433	<i>Meiocarpidium lepidotum</i> (Oliv.) Engl. & Diels	-	-	-	EU169731	EU169754	EU169776	EU169798	-
434	<i>Meiogyne baillonii</i> (Guillaumin) Heusden	-	JQ723768	JQ723793	-	JQ723855	JQ723908	-	JQ723930
435	<i>Meiogyne bidwillii</i> (Benth.) D. C. Thomas, Chaowasku & R. M. K. Saunders	-	AY518795	JQ723789	-	JQ723851	AY319089	-	JQ723925
436	<i>Meiogyne glabra</i> Heusden	-	JQ723772	-	-	JQ723859	JQ723912	-	JQ723935
437	<i>Meiogyne hainanensis</i> (Merr.) Bân	-	JQ723773	-	-	JQ723860	-	-	JQ723936
438	<i>Meiogyne heteropetala</i> (F. Muell.) D. C. Thomas, Chaowasku & R. M. K. Saunders	-	JQ723766	JQ723790	-	JQ723853	JQ723906	-	JQ723927
439	<i>Meiogyne hirsuta</i> (Jessup) Jessup	-	JQ723774	JQ723798	-	JQ723861	JQ723914	-	JQ723937
440	<i>Meiogyne lecardii</i> (Guillaumin) Heusden	-	JQ723775	JQ723799	-	JQ723862	JQ723915	-	JQ723938
441	<i>Meiogyne mindorensis</i> (Merr.) Heusden	-	JQ723776	JQ723800	-	JQ723863	JQ723916	-	JQ723939
442	<i>Meiogyne monosperma</i> (Hook. f. & Thomson) Heusden	-	JQ723777	-	-	JQ723864	-	-	JQ723940
443	<i>Meiogyne pannosa</i> (Dalzell) J. Sinclair	-	JQ723778	JQ723801	-	JQ723865	JQ723918	-	JQ723941
444	<i>Meiogyne stenopetala</i> (F. Muell.) Heusden	-	JQ723779	JQ723803	-	JQ723866	AY319083	-	JQ723943
445	<i>Meiogyne verrucosa</i> Jessup	-	JQ723780	JQ723804	-	JQ723867	JQ723920	-	JQ723944
446	<i>Meiogyne virgata</i> (Blume) Miq.	-	AY518798	JX544769	JX544784	-	AY319094	-	JQ723945
447	<i>Mezzettia parviflora</i> Becc.	-	AY518881	-	-	-	AY319095	-	-
448	<i>Miliusa amplexicaulis</i> Ridl.	-	-	JQ690479	JQ690480	-	JQ690478	-	JQ690481

No.	Voucher information	GenBank accession numbers							
	Taxa name	<i>atpB-rbcL</i>	<i>matK</i>	<i>ndhF</i>	<i>psbA-trnH</i>	<i>rbcL</i>	<i>trnL-F</i>	<i>trnS-G</i>	<i>ycfI</i>
449	<i>Miliusa brahei</i> (F. Muell.) Jessup	-	-	JQ690431	JQ690432	-	JQ690430	-	JQ690433
450	<i>Miliusa campanulata</i> Pierre	-	AY518842	JQ690487	JQ690488	-	AY319096	-	JQ690489
451	<i>Miliusa cuneata</i> Craib	-	AY518844	JQ690491	JQ690492	-	AY319097	-	JQ690493
452	<i>Miliusa fusca</i> Pierre	-	-	JQ690443	JQ690444	-	JQ690442	-	JQ690445
453	<i>Miliusa horsfieldii</i> (Benn.) Pierre	-	AY518849	JQ690447	JQ690448	-	AY319098	-	JQ690449
454	<i>Miliusa indica</i> Lesch. ex A. DC.	-	JQ723781	JQ723806	-	JQ723868	JQ723921	-	JQ723946
455	<i>Miliusa koolsii</i> (Kosterm.) J. Sinclair	-	-	JQ690455	JQ690456	-	JQ690454	-	JQ690457
456	<i>Miliusa lanceolata</i> Chaowasku & Keßler	-	-	JQ690459	JQ690460	-	JQ690458	-	JQ690461
457	<i>Miliusa macrocarpa</i> Hook. f. & Thomson	-	JQ690499	JQ690500	JQ690501	-	JQ690498	-	JQ690502
458	<i>Miliusa macropoda</i> Miq.	-	-	JQ690463	JQ690464	-	JQ690462	-	JQ690465
459	<i>Miliusa montana</i> Gardner ex Hook. f. & Thomson	-	JQ690507	JQ690508	JQ690509	-	JQ690506	-	JQ690510
460	<i>Miliusa novoguineensis</i> Mols & Keßler	-	-	JQ690467	JQ690468	-	JQ690466	-	JQ690469
461	<i>Miliusa parviflora</i> Ridl.	-	-	JQ690471	JQ690472	-	JQ690470	-	JQ690473
462	<i>Miliusa sclerocarpa</i> (A. DC.) Kurz	-	-	JQ690475	JQ690476	-	JQ690474	-	JQ690477
463	<i>Miliusa thorelii</i> Finet & Gagnep.	-	AY518846	JQ690519	JQ690520	-	AY319104	-	JQ690521
464	<i>Miliusa traceyi</i> Jessup	-	JQ690532	JQ690533	JQ690534	-	JQ690531	-	JQ690535
465	<i>Miliusa velutina</i> (Dunal) Hook. f. & Thomson	-	AY518847	JQ690536	JQ690537	-	AY319105	-	JQ690538
466	<i>Mischogyne michelioides</i> Exell	-	-	EU169718	EU169741	EU169764	EU169786	EU169809	-
467	<i>Mitrella kentii</i> (Blume) Miq.	-	FJ743751	JQ768616	FJ743789	AY841633	AY841711	-	-
468	<i>Mitrephora alba</i> Ridl.	-	AY518855	JQ889983	JQ889978	-	AY319106	-	JQ723947
469	<i>Mitrephora celebica</i> Scheff.	-	AY518859	-	-	-	AY319107	-	-
470	<i>Mitrephora keithii</i> Ridl.	EU522343	AY518857	-	EU522122	-	AY319108	-	-

No.	Voucher information	GenBank accession numbers							
	Taxa name	<i>atpB-rbcL</i>	<i>matK</i>	<i>ndhF</i>	<i>psbA-trnH</i>	<i>rbcL</i>	<i>trnL-F</i>	<i>trnS-G</i>	<i>ycf1</i>
471	<i>Mitrephora maingayi</i> Hook. f. & Thomson	-	AY518856	-	-	-	AY319109	-	-
472	<i>Mitrephora polypyrena</i> (Blume) Miq.	-	AY518858	-	-	-	AY319110	-	-
473	<i>Mitrephora vittata</i> Weeras. & R. M. K. Saunders	-	FJ463223	-	-	-	FJ463224	-	-
474	<i>Mkilua fragrans</i> Verdc.	EF179268	-	EF179303	DQ861696	AY841634	AY841712	EF179345	-
475	<i>Monanthotaxis buchananii</i> (Engl.) Verdc.	-	JQ768581	JQ768617	JQ768660	JQ768700	JQ768742	-	-
476	<i>Monanthotaxis congoensis</i> Baill.	-	JQ768582	JQ768618	JQ768661	JQ768701	JQ768743	-	-
477	<i>Monanthotaxis diclina</i> (Sprague) Verdc.	-	JQ768584	JQ768620	JQ768663	JQ768703	JQ768745	-	-
478	<i>Monanthotaxis enghiana</i> (Diels) P. H. Hoekstra	-	JQ768578	JQ768613	JQ768657	JQ768697	JQ768739	-	-
479	<i>Monanthotaxis fornicata</i> (Baill.) Verdc.	-	JQ768583	JQ768619	JQ768662	JQ768702	JQ768744	-	-
480	<i>Monanthotaxis obovata</i> (Benth.) P. H. Hoekstra	-	JQ768579	JQ768614	JQ768658	JQ768698	JQ768740	-	-
481	<i>Monanthotaxis schweinfurthii</i> (Engl. & Diels) Verdc.	-	JQ768585	JQ768621	JQ768664	JQ768704	JQ768746	-	-
482	<i>Monanthotaxis trichocarpa</i> (Engl. & Diels) Verdc.	-	JQ768586	JQ768622	JQ768665	JQ768705	JQ768747	-	-
483	<i>Monanthotaxis whytei</i> (Stapf) Verdc.	EF179269	EF179278	EF179304	EF179315	AY841635	AY841713	EF179346	-
484	<i>Monocarpia euneura</i> Miq.	AY841381	AY518865	AY841412	AY841477	-	AY319111	AY841559	-
485	<i>Monocarpia marginalis</i> (Scheff.) J. Sinclair	-	JQ690397	JQ690398	JQ690399	JQ690395	JQ690396	-	JQ690400
486	<i>Monocyclanthus vignei</i> Keay	-	-	EU169719	EU169742	EU169765	EU169787	EU169810	-
487	<i>Monodora angolensis</i> Welw.	-	-	EU216648	EU216672	-	EU216718	EU216627	-
488	<i>Monodora carolinae</i> Couvreur	-	-	EU216653	EU216677	-	EU216723	EU216632	-
489	<i>Monodora crispata</i> Engl.	-	-	EU169720	EU169743	AY841637	AY841715	EU169811	-
490	<i>Monodora globiflora</i> Couvreur	-	-	EU216654	EU216678	-	EU216724	EU216633	-

No.	Voucher information	GenBank accession numbers							
	Taxa name	<i>atpB-rbcL</i>	<i>matK</i>	<i>ndhF</i>	<i>psbA-trnH</i>	<i>rbcL</i>	<i>trnL-F</i>	<i>trnS-G</i>	<i>ycf1</i>
491	<i>Monodora grandidieri</i> Baill.	-	-	EU216649	EU216673	-	EU216719	EU216628	-
492	<i>Monodora hastipetala</i> Couvreur	-	-	EU216655	EU216679	-	EU216725	EU216634	-
493	<i>Monodora junodii</i> Engl. & Diels	-	-	EU216651	EU216675	-	EU216721	EU216630	-
494	<i>Monodora laurentii</i> De Wild.	-	-	EU216650	EU216674	-	EU216720	EU216629	-
495	<i>Monodora minor</i> Engl. & Diels	-	-	EU216656	EU216680	-	EU216726	EU216635	-
496	<i>Monodora myristica</i> (Gaertn.) Dunal	EF179270	AY743485	EF179305	DQ125129	AY743447	EU216716	EF179347	-
497	<i>Monodora stenopetala</i> Oliv.	-	-	EU216652	EU216676	-	EU216722	EU216631	-
498	<i>Monodora tenuifolia</i> Benth.	-	-	EU216647	EU216671	AY841638	AY841716	EU216626	-
499	<i>Monodora undulate</i> (P. Beauv.) Couvreur	-	-	EU169722	EU169744	EU169766	EU169788	EU169813	-
500	<i>Monoon australe</i> (Benth.) B. Xue & R. M. K. Saunders	-	JX227872	-	-	JX227897	JX227849	-	-
501	<i>Monoon erianthoides</i> (Airy Shaw) B. Xue & R. M. K. Saunders	-	JX227875	-	-	JX227900	JX227851	-	-
502	<i>Monoon fuscum</i> (King) B. Xue & R. M. K. Saunders	-	AY518787	JX544779	JX544792	-	AY319085	-	JX544767
503	<i>Monoon hypogaeum</i> (King) B. Xue & R. M. K. Saunders	-	JX227876	-	-	JX227901	JX227852	-	-
504	<i>Monoon kingii</i> (Baker f.) B. Xue & R. M. K. Saunders	-	JX227877	-	-	JX227902	JX227853	-	-
505	<i>Monoon klemmei</i> (Elmer) B. Xue & R. M. K. Saunders	-	JX227878	-	-	JX227903	JX227854	-	-
506	<i>Monoon laui</i> (Merr.) B. Xue & R. M. K. Saunders	-	JX227879	-	-	JX227904	JX227855	-	-

No.	Voucher information	GenBank accession numbers							
	Taxa name	<i>atpB-rbcL</i>	<i>matK</i>	<i>ndhF</i>	<i>psbA-trnH</i>	<i>rbcL</i>	<i>trnL-F</i>	<i>trnS-G</i>	<i>ycfI</i>
507	<i>Monoon membranifolium</i> (J. Sinclair) B. Xue & R. M. K. Saunders	-	AY518788	-	-	-	AY319086	-	-
508	<i>Monoon michaelii</i> (C.T. White) B. Xue & R. M. K. Saunders	-	JX227880	-	-	JX227905	JX227856	-	-
509	<i>Monoon paradoxum</i> (Becc.) B. Xue & R. M. K. Saunders	-	AY518789	-	-	-	AY319087	-	-
510	<i>Monoon sympetalum</i> (Merr.) B. Xue & R. M. K. Saunders	-	JX227881	-	-	JX227906	JX227857	-	-
511	<i>Moonon coffeoides</i> (Thwaites ex Hook. f. & Thomson) B. Xue & R. M. K. Saunders	EU522344	EU522233	-	EU522123	EU522288	EU522178	-	-
512	<i>Moonon lateriflorum</i> (Blume) B. Xue & R. M. K. Saunders	-	AY518781	JQ723811	-	JQ723870	AY319138	-	JQ723951
513	<i>Moonon longifolium</i> (Sonn.) B. Xue & R. M. K. Saunders	EU522346	AY518786	-	EU522125	EU522290	EU522180	-	-
514	<i>Moonon obtusum</i> (Craib) B. Xue & R. M. K. Saunders	-	AY518784	JX544780	JX544793	-	AY319154	-	JX544768
515	<i>Mosannonna costaricensis</i> (R. E. Fr.) Chatrou	AY841382	AY743503	AY841413	AY841479	AY743510	AY743496	AY841560	-
516	<i>Mosannonna discolor</i> (R. E. Fr.) Chatrou	-	AY743504	-	AY841480	AY743511	AY743497	-	-
517	<i>Mosannonna garwoodii</i> Chatrou & Welzenis	-	AY743505	-	AY841481	AY743512	AY743498	-	-
518	<i>Mosannonna pacifica</i> Chatrou	-	AY743506	-	AY841482	AY743513	AY743499	-	-
519	<i>Mosannonna papillosa</i> Chatrou	-	AY743507	-	AY841483	AY743514	AY743500	-	-
520	<i>Mosannonna vasquezii</i> Chatrou	-	AY743508	-	AY841484	AY743515	AY319178	-	-
521	<i>Mwasumbia alba</i> Couvreur & D. M. Johnson	-	-	-	-	EU747680	EU747674	-	-
522	<i>Myristica fragrans</i> Houtt.	-	AJ966803	AY218188	-	AF206798	-	-	-

No.	Voucher information	GenBank accession numbers							
	Taxa name	<i>atpB-rbcL</i>	<i>matK</i>	<i>ndhF</i>	<i>psbA-trnH</i>	<i>rbcL</i>	<i>trnL-F</i>	<i>trnS-G</i>	<i>ycfI</i>
523	<i>Neostenanthera myristicifolia</i> (Oliv.) Exell	EF179271	AY743486	EF179306	DQ125130	AY743448	AY743467	EF179348	-
524	<i>Neo-uvaria acuminatissima</i> (Miq.) Airy Shaw	-	AY518793	-	-	-	AY319112	-	-
525	<i>Neo-uvaria parallelivenia</i> (Boerl.) H. Okada & K. Ueda	-	AY518794	-	-	-	AY319113	-	-
526	<i>Neo-uvaria telopea</i> Chaowasku	-	JX544751	JX544778	JX544791	JX544755	JX544783	-	JX544766
527	<i>Onychopetalum periquino</i> (Rusby) D. M. Johnson & N. A. Murray	AY841383	AY518876	AY841414	AY841485	-	AY319179	AY841561	-
528	<i>Ophrypetalum odoratum</i> Diels	-	-	EU169723	EU169745	EU169767	EU169789	EU169814	-
529	<i>Orophea brandisii</i> Hook. f. & Thomson	-	AY518813	-	-	-	AY319116	-	-
530	<i>Orophea celebica</i> (Blume) Miq.	-	AY518814	-	-	-	AY319117	-	-
531	<i>Orophea creaghii</i> (Ridl.) Leonardía & Keßler	-	AY518817	-	-	-	AY319118	-	-
532	<i>Orophea enneandra</i> Blume	-	AY518816	-	-	-	AY319120	-	-
533	<i>Orophea enterocarpa</i> Maingay ex Hook. f. & Thomson	-	AY518815	JQ690416	JQ690417	-	AY319119	-	JQ690418
534	<i>Orophea kerrii</i> Keßler	-	AY518818	JQ690419	JQ690420	-	AY319121	-	JQ690421
535	<i>Orophea polycarpa</i> A. DC.	-	AY518819	-	-	-	AY319123	-	-
536	<i>Oxandra asbeckii</i> (Pulle) R. E. Fr.	-	-	-	AY841486	AY841639	AY841717	-	-
537	<i>Oxandra espintana</i> (Spruce ex Benth.) Baill.	-	DQ018260	-	AY841487	-	AY319180	-	-
538	<i>Oxandra euneura</i> Diels	-	-	-	AY841488	AY841640	AY841718	-	-
539	<i>Oxandra lanceolata</i> (Sw.) Baill.	-	KJ012702	-	KJ426857	KJ082471	-	-	-
540	<i>Oxandra laurifolia</i> (Sw.) A. Rich.	-	HM446726	-	AY841489	AY841528	AY841542	-	-
541	<i>Oxandra longipetala</i> R. E. Fr.	-	-	-	AY841490	AY841641	AY841719	-	-
542	<i>Oxandra macrophylla</i> R. E. Fr.	-	-	-	AY841491	AY841642	AY841720	-	-

No.	Voucher information	GenBank accession numbers							
	Taxa name	<i>atpB-rbcL</i>	<i>matK</i>	<i>ndhF</i>	<i>psbA-trnH</i>	<i>rbcL</i>	<i>trnL-F</i>	<i>trnS-G</i>	<i>ycfI</i>
543	<i>Oxandra nitida</i> R. E. Fr.	-	-	-	AY841492	AY841529	AY841543	-	-
544	<i>Oxandra polyantha</i> R. E. Fr.	-	-	-	AY841493	AY841643	AY841721	-	-
545	<i>Oxandra riedeliana</i> R. E. Fr.	-	KP859350	-	-	-	KP859336	-	-
546	<i>Oxandra sphaerocarpa</i> R. E. Fr.	-	-	-	AY841494	AY841644	AY841722	-	-
547	<i>Oxandra venezuelana</i> R. E. Fr.	-	JQ690413	JQ690414	AY841495	AY841645	AY841723	-	JQ690415
548	<i>Oxandra xylopioides</i> Diels	-	-	-	AY841496	AY841646	AY841724	-	-
549	<i>Phaeanthus ebracteolatus</i> (C. Presl) Merr.	-	AY518863	-	-	JF738713	AY319125	-	-
550	<i>Phaeanthus</i> sp. WP2A0446	-	GQ248183	-	GQ248373	GQ248677	-	-	-
551	<i>Phaeanthus splendens</i> Miq.	-	AY518864	JX544777	JX544790	JX544754	AY319126	-	JX544765
552	<i>Phoenicanthus obliquus</i> (Hook. f. & Thomson) Alston	MF322677*	MF322639*	-	MF322658*	MF322654*	MF322667*	-	-
553	<i>Piptostigma fasciculatum</i> (De Wild.) Boutique ex R. E. Fr.	-	-	-	AY841497	AY841647	AY841725	-	-
554	<i>Piptostigma mortehani</i> De Wild.	AY841384	AY743492	AY841415	AY841498	AY743454	AY743473	AY841562	-
555	<i>Piptostigma oyemense</i> Pellegr.	-	KC627444	-	KC667604	KC627994	-	-	-
556	<i>Piptostigma pilosum</i> Oliv.	-	-	-	AY841499	AY841648	AY319181	-	-
557	<i>Platymitra macrocarpa</i> Boerl.	-	AY518812	JQ723809	JQ690423	-	AY319127	-	JQ690424
558	<i>Platymitra</i> sp. 1 TC-2012	-	JQ690426	JQ690427	JQ690428	-	JQ690425	-	JQ690429
559	<i>Polyalthia angustissima</i> Ridl.	-	JX227882	JX544831	JX544807	JX227907	JX544795	-	-
560	<i>Polyalthia bullata</i> King	-	JX544825	JX544839	JX544809	JX227908	JX544800	-	JX544818
561	<i>Polyalthia cauliflora</i> Hook. f. & Thomson	-	AY518823	JX544837	-	-	AY319129	-	-
562	<i>Polyalthia celebica</i> Miq.	-	AY518827	JX544838	JX544808	-	AY319130	-	-
563	<i>Polyalthia evecta</i> (Pierre) Finet & Gagnep.	-	JX227885	-	-	JX227910	JX227861	-	-

No.	Voucher information	GenBank accession numbers							
	Taxa name	<i>atpB-rbcL</i>	<i>matK</i>	<i>ndhF</i>	<i>psbA-trnH</i>	<i>rbcL</i>	<i>trnL-F</i>	<i>trnS-G</i>	<i>ycf1</i>
564	<i>Polyalthia hispida</i> B. Xue & R. M. K. Saunders	-	JX227886	-	-	JX227911	JX227862	-	-
565	<i>Polyalthia insignis</i> (Hook. f.) Airy Shaw	-	JX227887	-	-	JX227912	JX227863	-	-
566	<i>Polyalthia johnsonii</i> (F. Muell.) B. Xue & R. M. K. Saunders	-	JQ723767	JQ723791	JX544810	JQ723854	JX544801	-	JQ723928
567	<i>Polyalthia kanchanaburiana</i> Khumch. & Thongp.	-	JX227888	-	-	JX227913	JX227864	-	-
568	<i>Polyalthia lanceolata</i> S. Vidal	-	JX227889	-	-	JX227914	JX227865	-	-
569	<i>Polyalthia lateritia</i> J. Sinclair	-	JX227890	-	-	JX227915	JX227866	-	-
570	<i>Polyalthia longirostris</i> (Scheff.) B. Xue & R. M. K. Saunders	-	AY518826	-	-	-	AY319091	-	-
571	<i>Polyalthia motleyana</i> (Hook. f.) Airy Shaw	-	JX227891	-	-	JX227916	JX227867	-	-
572	<i>Polyalthia parviflora</i> Ridl.	-	JX227892	JX544836	-	JX227917	JX544799	-	-
573	<i>Polyalthia stenopetala</i> (Hook. f. & Thomson) Finet & Gagnep.	-	JX227896	JX544832	-	JX544823	AY319148	-	-
574	<i>Polyalthia suberosa</i> (Roxb.) Thwaites	AY841386	AY220439	AY841417	AY841502	AY238956	AY319152	AY841564	JQ723952
575	<i>Polyalthia submontana</i> (Jessup) B. Xue & R. M. K. Saunders	-	JX227893	-	-	JX227918	JX227869	-	-
576	<i>Polyalthia trochilia</i> I. M. Turner	-	JX227894	-	-	JX227919	JX227870	-	-
577	<i>Polyalthia xanthocarpa</i> B. Xue & R. M. K. Saunders	-	JX227895	-	-	JX227920	JX227871	-	-
578	<i>Polyceratocarpus askhambryan-iringae</i> A. R. Marshall & D. M. Johnson	-	-	-	-	EU747681	EU747675	-	-
579	<i>Polyceratocarpus microtrichus</i> (Engl. & Diels) Ghesq. ex Pellegr.	-	-	-	-	EU747683	EU747677	-	-

No.	Voucher information	GenBank accession numbers							
	Taxa name	<i>atpB-rbcL</i>	<i>matK</i>	<i>ndhF</i>	<i>psbA-trnH</i>	<i>rbcL</i>	<i>trnL-F</i>	<i>trnS-G</i>	<i>ycfI</i>
580	<i>Polyceratocarpus parviflorus</i> (Baker f.) Ghesq.	-	KC627837	-	KC688815	EU747682	EU747676	-	-
581	<i>Polyceratocarpus pellegrinii</i> Le Thomas	-	-	-	-	EU747684	EU747678	-	-
582	<i>Popowia hirta</i> Miq.	-	AY518860	JX544830	JX544806	-	AY319156	-	JX544816
583	<i>Popowia odoardi</i> Diels	-	AY518861	-	-	-	AY319157	-	-
584	<i>Popowia pisocarpa</i> (Blume) Endl.	-	AY518862	JQ723812	-	-	AY319158	-	JQ723953
585	<i>Porcelia steinbachii</i> (Diels) R. E. Fr.	-	-	-	-	AY841649	AY841727	-	-
586	<i>Pseudartabotrys letestui</i> Pellegr.	EF179272	DQ125061	EF179307	DQ125131	AY841650	AY841728	EF179349	-
587	<i>Pseudephedranthus fragrans</i> (R. E. Fr.) Aristeg.	-	-	-	AY841504	AY841651	AY841729	-	-
588	<i>Pseudephedranthus fragrans</i> (R. E. Fr.) Aristeg. <i>Pfa683</i>	MF322675*	MF322637*	-	MF322656*	MF322652*	MF322665*	-	-
589	<i>Pseudephedranthus fragrans</i> (R. E. Fr.) Aristeg. <i>Pfa878</i>	MF322676*	MF322638*	-	MF322657*	MF322653*	MF322666*	-	-
590	<i>Pseudomalmea diclina</i> (R. E. Fr.) Chatrou	AY841388	AY841398	AY841419	AY841506	AY841530	AY319182	AY841566	-
591	<i>Pseudomalmea</i> sp. <i>Idarraga 13</i>	-	-	-	AY841507	AY841652	AY841730	-	-
592	<i>Pseudoxandra longipes</i> Maas	-	-	-	AY841509	AY841532	AY841546	-	-
593	<i>Pseudoxandra lucida</i> R. E. Fr.	AY841389	AY518870	AY841420	AY841510	-	AY319190	AY841567	-
594	<i>Pseudoxandra polyphleba</i> (Diels) R. E. Fr.	-	JQ769091	JQ769092	AY841512	AY841654	AY841732	-	-
595	<i>Pseudoxandra spiritus-sancti</i> Maas	AY841390	AY841399	AY841421	AY841513	AY841533	AY841547	AY841568	-
596	<i>Pseuduvaria acerosa</i> Y. C. F. Su & R. M. K. Saunders	EU522347	EU522236	-	EU522126	EU522291	EU522181	-	-
597	<i>Pseuduvaria aurantiaca</i> (Miq.) Merr.	EU522348	EU522237	-	EU522127	EU522292	EU522182	-	-
598	<i>Pseuduvaria beccarii</i> (Scheff.) J. Sinclair	EU522349	EU522238	-	EU522128	EU522293	EU522183	-	-

No.	Voucher information	GenBank accession numbers							
	Taxa name	<i>atpB-rbcL</i>	<i>matK</i>	<i>ndhF</i>	<i>psbA-trnH</i>	<i>rbcL</i>	<i>trnL-F</i>	<i>trnS-G</i>	<i>ycfI</i>
599	<i>Pseuduvaria borneensis</i> Y. C. F. Su & R. M. K. Saunders	EU522350	EU522239	-	EU522129	EU522294	EU522184	-	-
600	<i>Pseuduvaria brachyantha</i> Y. C. F. Su & R. M. K. Saunders	EU522351	AY518837	-	EU522130	EU522295	AY319160	-	-
601	<i>Pseuduvaria bruneiensis</i> Y.C.F. Su & R.M.K. Saunders	EU522352	EU522241	-	EU522131	EU522296	EU522186	-	-
602	<i>Pseuduvaria calliura</i> Airy Shaw	EU522353	EU522242	-	EU522132	EU522297	EU522187	-	-
603	<i>Pseuduvaria cerina</i> J. Sinclair	EU522354	EU522243	-	EU522133	EU522298	EU522188	-	-
604	<i>Pseuduvaria clemensiae</i> Y. C. F. Su & R. M. K. Saunders	EU522355	EU522244	-	EU522134	EU522299	EU522189	-	-
605	<i>Pseuduvaria coriacea</i> Y. C. F. Su & R. M. K. Saunders	EU522356	AY518838	-	EU522135	EU522300	AY319161	-	-
606	<i>Pseuduvaria costata</i> (Scheff.) J. Sinclair	EU522357	EU522246	-	EU522136	EU522301	EU522191	-	-
607	<i>Pseuduvaria cymosa</i> (J. Sinclair) Y. C. F. Su & R. M. K. Saunders	EU522358	EU522247	-	EU522137	EU522302	EU522192	-	-
608	<i>Pseuduvaria dielsiana</i> (Lauterb.) J. Sinclair	EU522359	EU522248	-	EU522138	EU522303	EU522193	-	-
609	<i>Pseuduvaria dolichonema</i> (Diels) J. Sinclair	EU522360	EU522249	-	EU522139	EU522304	EU522194	-	-
610	<i>Pseuduvaria filipes</i> (Lauterb. & K. Schum.) J. Sinclair	EU522361	EU522250	-	EU522140	EU522305	EU522195	-	-
611	<i>Pseuduvaria fragrans</i> Y. C. F. Su, Chaowasku & R. M. K. Saunders	-	JQ723784	JX544829	-	JQ723871	JQ723924	-	JQ723954
612	<i>Pseuduvaria froggattii</i> (F. Muell.) Jessup	EU522362	EU522251	-	EU522141	EU522306	EU522196	-	-
613	<i>Pseuduvaria galeata</i> J. Sinclair	EU522363	EU522252	-	EU522142	EU522307	EU522197	-	-

No.	Voucher information	GenBank accession numbers							
	Taxa name	<i>atpB-rbcL</i>	<i>matK</i>	<i>ndhF</i>	<i>psbA-trnH</i>	<i>rbcL</i>	<i>trnL-F</i>	<i>trnS-G</i>	<i>ycf1</i>
614	<i>Pseuduvaria glabrescens</i> (Jessup) Y. C. F. Su & R. M. K. Saunders	EU522364	EU522253	-	EU522143	EU522308	EU522198	-	-
615	<i>Pseuduvaria grandifolia</i> (Warb.) J. Sinclair	EU522365	EU522254	-	EU522144	EU522309	EU522199	-	-
616	<i>Pseuduvaria hylandii</i> Jessup	EU522366	EU522255	-	EU522145	EU522310	EU522200	-	-
617	<i>Pseuduvaria kingiana</i> Y. C. F. Su & R. M. K. Saunders	EU522367	EU522256	-	EU522146	EU522311	EU522201	-	-
618	<i>Pseuduvaria latifolia</i> (Blume) Bakh. f.	EU522368	EU522257	-	EU522147	EU522312	EU522202	-	-
619	<i>Pseuduvaria lignocarpa</i> J. Sinclair	EU522369	EU522258	-	EU522148	EU522313	EU522203	-	-
620	<i>Pseuduvaria luzonensis</i> (Merr.) Y. C. F. Su & R. M. K. Saunders	EU522370	EU522259	-	EU522149	EU522314	EU522204	-	-
621	<i>Pseuduvaria macgregorii</i> Merr.	EU522371	EU522260	-	EU522150	EU522315	EU522205	-	-
622	<i>Pseuduvaria macrocarpa</i> (Burck) Y. C. F. Su & R. M. K. Saunders	EU522372	EU522261	-	EU522151	EU522316	EU522206	-	-
623	<i>Pseuduvaria macrophylla</i> (Oliv.) Merr.	EU522373	EU522262	-	EU522152	EU522317	EU522207	-	-
624	<i>Pseuduvaria megalopus</i> (K. Schum.) Y. C. F. Su & Mols 15599	-	AY518836	-	-	-	AY319124	-	-
625	<i>Pseuduvaria megalopus</i> (K. Schum.) Y. C. F. Su & Mols 16235	EU522374	EU522263	-	EU522153	EU522318	EU522208	-	-
626	<i>Pseuduvaria mindorensis</i> Y. C. F. Su & R. M. K. Saunders	EU522375	EU522264	-	EU522154	EU522319	EU522209	-	-
627	<i>Pseuduvaria mollis</i> (Warb.) J. Sinclair	EU522376	EU522265	-	EU522155	EU522320	EU522210	-	-
628	<i>Pseuduvaria monticola</i> J. Sinclair	EU522377	EU522266	-	EU522156	EU522321	EU522211	-	-
629	<i>Pseuduvaria mulgraveana</i> Jessup	EU522378	EU522267	-	EU522157	EU522322	EU522212	-	-

No.	Voucher information	GenBank accession numbers							
	Taxa name	<i>atpB-rbcL</i>	<i>matK</i>	<i>ndhF</i>	<i>psbA-trnH</i>	<i>rbcL</i>	<i>trnL-F</i>	<i>trnS-G</i>	<i>ycf1</i>
630	<i>Pseuduvaria multiovulata</i> (C. E. C. Fisch.) J. Sinclair	EU522379	EU522268	-	EU522158	EU522323	EU522213	-	-
631	<i>Pseuduvaria nova-guineensis</i> J. Sinclair	EU522380	EU522269	-	EU522159	EU522324	EU522214	-	-
632	<i>Pseuduvaria obliqua</i> Y. C. F. Su & R. M. K. Saunders	EU522381	EU522270	-	EU522160	EU522325	EU522215	-	-
633	<i>Pseuduvaria oxycarpa</i> (Boerl. ex Koord.) Y. C. F. Su & R. M. K. Saunders	EU522382	EU522271	-	EU522161	EU522326	EU522216	-	-
634	<i>Pseuduvaria pamattonis</i> (Miq.) Y. C. F. Su & R. M. K. Saunders	EU522383	AY518840	-	EU522162	EU522327	AY319163	-	-
635	<i>Pseuduvaria parvipetala</i> Y. C. F. Su & R. M. K. Saunders	EU522384	EU522273	-	EU522163	EU522328	EU522218	-	-
636	<i>Pseuduvaria philippinensis</i> Merr.	EU522385	EU522274	-	EU522164	EU522329	EU522219	-	-
637	<i>Pseuduvaria phuyensis</i> (R. M. K. Saunders, Y. C. F. Su & Chalermglin) Y. C. F. Su & R. M. K. Saunders	EU522342	AY518841	-	EU522121	EU522287	AY319114	-	-
638	<i>Pseuduvaria reticulata</i> (Blume) Miq.	EU522386	EU522275	-	EU522165	EU522330	EU522220	-	-
639	<i>Pseuduvaria rugosa</i> (Blume) Merr.	EU522387	AY518839	-	EU522166	EU522331	AY319162	-	-
640	<i>Pseuduvaria sessilicarpa</i> (J. Sinclair) Y. C. F. Su & R. M. K. Saunders	EU522388	EU522277	-	EU522167	EU522332	EU522222	-	-
641	<i>Pseuduvaria sessilifolia</i> J. Sinclair	EU522389	EU522278	-	EU522168	EU522333	EU522223	-	-
642	<i>Pseuduvaria setosa</i> (King) J. Sinclair	EU522390	EU522279	-	EU522169	EU522334	EU522224	-	-
643	<i>Pseuduvaria silvestris</i> (Diels) J. Sinclair	EU522391	EU522280	-	EU522170	EU522335	EU522225	-	-
644	<i>Pseuduvaria subcordata</i> Y. C. F. Su & R. M. K. Saunders	EU522392	EU522281	-	EU522171	EU522336	EU522226	-	-

No.	Voucher information	GenBank accession numbers							
	Taxa name	<i>atpB-rbcL</i>	<i>matK</i>	<i>ndhF</i>	<i>psbA-trnH</i>	<i>rbcL</i>	<i>trnL-F</i>	<i>trnS-G</i>	<i>ycf1</i>
645	<i>Pseuduvaria taipingensis</i> J. Sinclair	EU522393	EU522282	-	EU522172	EU522337	EU522227	-	-
646	<i>Pseuduvaria trimera</i> (Craib) Y. C. F. Su & R. M. K. Saunders	EU522394	EU522283	-	EU522173	EU522338	EU522228	-	-
647	<i>Pseuduvaria unguiculata</i> (Elmer) Y. C. F. Su & R. M. K. Saunders	EU522395	EU522284	-	EU522174	EU522339	EU522229	-	-
648	<i>Pseuduvaria villosa</i> Jessup	EU522396	EU522285	-	EU522175	EU522340	EU522230	-	-
649	<i>Pyramidanthe prismatica</i> (Hook. f. & Thomson) J. Sinclair	-	JN175163	-	JN175178	JN175193	JN175208	-	-
650	<i>Ruizodendron ovale</i> (Ruiz & Pav.) R. E. Fr.	-	-	-	AY841514	AY841657	AY841735	-	-
651	<i>Sageraea lanceolata</i> Miq.	-	AY518799	JX544774	JX544787	-	AY319164	-	JX544762
652	<i>Sanrafaelia ruffonammari</i> Verdc.	-	-	EU169724	EU169746	EU169768	EU169790	EU169815	-
653	<i>Sapranthus microcarpus</i> (Donn. Sm.) R. E. Fr.	-	AY518806	-	-	-	AY319166	-	-
654	<i>Sapranthus palanga</i> R. E. Fr.	-	JQ586518	-	-	JQ590191	-	-	-
655	<i>Sapranthus viridiflorus</i> G. E. Schatz	AY841391	AY743493	AY841422	AY841515	JQ590194	AY319165	AY841569	JQ723955
656	<i>Schefferomitra subaequalis</i> (Scheff.) Diels	-	KX786606	-	KX786626	KX786628	KX786645	-	-
657	<i>Sirdavidia solannona</i> Couvreur & Sauquet	-	-	-	-	KP144082	KP144080	-	-
658	<i>Sphaerocoryne gracilis</i> (Oliv. ex Engl. & Diels) Verdc.	-	-	JQ768623	EU169732	EU169755	EU169777	EU169799	-
659	<i>Sphaerocoryne</i> sp. 07/4	-	AY518878	JQ768624	FJ743788	AY319071	AY319185	-	-
660	<i>Stelechocarpus burahol</i> (Blume) Hook. f. & Thomson	-	AY518803	JX544775	JX544788	-	AY319167	-	JQ723956
661	<i>Stenanona costaricensis</i> R. E. Fr.	-	AY518801	JX544772	AY841516	JQ590198	AY319183	-	JX544759
662	<i>Stenanona panamensis</i> Standl.	-	AY518802	-	-	-	AY319184	-	-

No.	Voucher information	GenBank accession numbers							
	Taxa name	<i>atpB-rbcL</i>	<i>matK</i>	<i>ndhF</i>	<i>psbA-trnH</i>	<i>rbcL</i>	<i>trnL-F</i>	<i>trnS-G</i>	<i>ycfI</i>
663	<i>Tetrameranthus duckei</i> R. E. Fr.	-	-	-	AY841439	AY841658	AY841736	-	-
664	<i>Tetrameranthus laomae</i> D. R. Simpson	-	-	-	-	AY841659	AY841737	-	-
665	<i>Toussaintia orientalis</i> Verdc.	-	-	EU169710	EU169733	EU169756	EU169778	EU169800	-
666	<i>Tridimeris hahniana</i> (Baill.) Baill.	-	-	-	-	-	AY319169	-	-
667	<i>Tridimeris</i> sp. TC-2012	-	JX544750	JX544773	JX544786	JX544753	JX544782	-	JX544761
668	<i>Trigynaea duckei</i> (R. E. Fr.) R. E. Fr.	-	-	-	-	AY841660	AY841738	-	-
669	<i>Trigynaea lanceipetala</i> D. M. Johnson & N. A. Murray	EF179274	AY743487	EF179309	-	AY743449	AY743468	EF179351	-
670	<i>Trivalvaria costata</i> (Hook. f. & Thomson) I. M. Turner	-	-	JQ723815	-	-	-	-	JQ723957
671	<i>Trivalvaria dubia</i> (Kurz) J. Sinclair	-	HQ286574	-	-	HQ286580	HQ286587	-	-
672	<i>Trivalvaria macrophylla</i> (Blume) Miq.	-	HQ286576	-	-	HQ286582	HQ286588	-	-
673	<i>Trivalvaria</i> sp. 1 TC-2012	-	JX544824	JX544828	JX544805	JX544822	JX544794	-	JX544814
674	<i>Unonopsis pittieri</i> Saff.	-	GQ982122	-	AY841517	AY841661	DQ018201	-	-
675	<i>Unonopsis stipitata</i> Diels	AY841392	AY841400	AY841423	AY841519	AY841662	DQ018202	AY841570	-
676	<i>Uvaria acuminata</i> Oliv.	-	FJ743753	-	FJ743791	FJ743825	FJ743860	-	-
677	<i>Uvaria afzelii</i> G. Elliot	-	JN175164	-	JN175179	JN175194	JN175209	-	-
678	<i>Uvaria angolensis</i> Welw. ex Oliv.	-	FJ743754	-	FJ743792	FJ743826	FJ743861	-	-
679	<i>Uvaria anonoides</i> Baker f.	-	FJ743755	-	FJ743793	FJ743827	FJ743862	-	-
680	<i>Uvaria antsiranensis</i> Le Thomas	-	JN175165	-	JN175180	JN175195	JN175210	-	-
681	<i>Uvaria argenteum</i> Blume	-	FJ743741	-	FJ743778	FJ743816	FJ743850	-	-
682	<i>Uvaria baumannii</i> Engl. & Diels	-	FJ743756	-	FJ743794	FJ743828	FJ743863	-	-
683	<i>Uvaria boniana</i> Finet & Gagnep.	-	FJ743757	-	FJ743795	FJ743829	FJ743864	-	-

No.	Voucher information	GenBank accession numbers							
	Taxa name	<i>atpB-rbcL</i>	<i>matK</i>	<i>ndhF</i>	<i>psbA-trnH</i>	<i>rbcL</i>	<i>trnL-F</i>	<i>trnS-G</i>	<i>ycfI</i>
684	<i>Uvaria borneensis</i> (Merr.) Utteridge	-	FJ743758	-	FJ743796	FJ743830	FJ743865	-	-
685	<i>Uvaria buchholzii</i> Engl. & Diels	-	GU951715	-	GU951724	GU951733	GU951742	-	-
686	<i>Uvaria calamistrata</i> Hance	-	FJ743759	-	FJ743797	FJ743831	FJ743866	-	-
687	<i>Uvaria chamae</i> P. Beauv.	-	FJ743760	-	FJ743798	AY841663	AY841741	-	-
688	<i>Uvaria cherrevensis</i> (Pierre ex Finet & Gagnep.) L. L. Zhou, Y. C. F. Su & R. M. K. Saunders	-	FJ743750	-	FJ743787	FJ743823	FJ743858	-	-
689	<i>Uvaria clavata</i> Pierre ex Engl. & Diels	-	FJ743761	-	FJ743799	FJ743833	FJ743867	-	-
690	<i>Uvaria commersoniana</i> Baill.	-	JN175166	-	JN175181	JN175196	JN175211	-	-
691	<i>Uvaria concava</i> Teijsm. & Binn.	-	JN175167	-	JN175182	JN175197	JN175212	-	-
692	<i>Uvaria cordata</i> (Dunal) Alston	-	JN175168	-	JN175183	JN175198	JN175213	-	-
693	<i>Uvaria cuneifolia</i> (Hook.f. & Thomson) L. L. Zhou, Y. C. F. Su & R. M. K. Saunders	-	FJ743749	-	FJ743786	FJ743822	FJ743857	-	-
694	<i>Uvaria dasoclema</i> L. L. Zhou, Y. C. F. Su & R. M. K. Saunders	-	GU951716	-	GU951725	GU951734	GU951743	-	-
695	<i>Uvaria dependens</i> Engl. & Diels	-	JN175169	-	JN175184	JN175199	JN175214	-	-
696	<i>Uvaria dulcis</i> Dunal	-	FJ743740	-	FJ743777	FJ743815	FJ743849	-	-
697	<i>Uvaria elmeri</i> Merr.	-	JN175170	-	JN175185	JN175200	JN175215	-	-
698	<i>Uvaria excelsum</i> (Hook.f. & Thomson) King	-	FJ743742	-	FJ743779	FJ743817	FJ743851	-	-
699	<i>Uvaria faulknerae</i> Verdc.	-	FJ743762	-	FJ743800	FJ743834	FJ743868	-	-
700	<i>Uvaria flava</i> Teijsm. & Binn.	-	FJ743763	-	FJ743801	FJ743835	FJ743869	-	-
701	<i>Uvaria glabra</i> Span	-	FJ743743	-	FJ743780	FJ743818	FJ743852	-	-
702	<i>Uvaria grandiflora</i> Roxb. ex Hornem.	-	FJ743764	-	FJ743802	FJ743836	FJ743870	-	-

No.	Voucher information	GenBank accession numbers							
	Taxa name	<i>atpB-rbcL</i>	<i>matK</i>	<i>ndhF</i>	<i>psbA-trnH</i>	<i>rbcL</i>	<i>trnL-F</i>	<i>trnS-G</i>	<i>ycf1</i>
703	<i>Uvaria griffithii</i> L. L. Zhou, Y. C. F. Su & R. M. K. Saunders	-	FJ743746	-	FJ743783	AY841607	AY841685	-	-
704	<i>Uvaria hahnii</i> (Finet & Gagnep.) J. Sinclair	-	JN175171	-	JN175186	JN175201	JN175216	-	-
705	<i>Uvaria hamiltonii</i> Hook. f. & Thomson	-	FJ743765	-	FJ743803	FJ743837	FJ743871	-	-
706	<i>Uvaria hirsuta</i> Jack	-	FJ743766	-	FJ743804	FJ743838	FJ743872	-	-
707	<i>Uvaria hookeri</i> King	-	FJ743744	-	FJ743781	AY841606	AY841684	-	-
708	<i>Uvaria laha</i> Miq.	-	JN175172	-	JN175187	JN175202	JN175217	-	-
709	<i>Uvaria leichhardtii</i> (F. Muell.) L. L. Zhou, Y. C. F. Su & R. M. K. Saunders	-	GU951717	-	GU951726	GU951735	GU951744	-	-
710	<i>Uvaria leptocladon</i> Oliv.	-	FJ743767	-	FJ743805	FJ743839	FJ743873	-	-
711	<i>Uvaria lobbiana</i> Hook. f. & Thomson	-	FJ743768	-	FJ743806	FJ743840	FJ743874	-	-
712	<i>Uvaria lucida</i> Benth.	EF179275	AY238966	EF179310	AY841440	AY238957	EF179319	EF179352	-
713	<i>Uvaria lurida</i> Hook. f. & Thomson	-	FJ743769	-	FJ743807	FJ743841	FJ743875	-	-
714	<i>Uvaria macropoda</i> Hook. f. & Thomson	-	FJ743770	-	FJ743808	FJ743842	FJ743876	-	-
715	<i>Uvaria manjensis</i> Cavaco & Keraudren	-	JN175173	-	JN175188	JN175203	JN175218	-	-
716	<i>Uvaria marenteria</i> (DC.) Baill.	-	JN175174	-	JN175189	JN175204	JN175219	-	-
717	<i>Uvaria micrantha</i> (A.DC.) Hook. f. & Thomson	-	FJ743745	-	FJ743782	FJ743819	FJ743854	-	-
718	<i>Uvaria pandensis</i> Verdc.	-	FJ743771	-	FJ743809	FJ743843	FJ743877	-	-
719	<i>Uvaria pauciovulata</i> Hook. f. & Thomson	-	JN175175	-	JN175190	JN175205	JN175220	-	-
720	<i>Uvaria rufa</i> Blume	-	FJ743772	-	FJ743810	FJ743844	FJ743878	-	-
721	<i>Uvaria rupestris</i> (Jessup) L. L. Zhou, Y. C. F. Su & R. M. K. Saunders	-	GU951718	-	GU951727	GU951736	GU951745	-	-
722	<i>Uvaria sambiranensis</i> Derooin & L. Gaut.	-	JN175176	-	JN175191	JN175206	JN175221	-	-

No.	Voucher information	GenBank accession numbers							
	Taxa name	<i>atpB-rbcL</i>	<i>matK</i>	<i>ndhF</i>	<i>psbA-trnH</i>	<i>rbcL</i>	<i>trnL-F</i>	<i>trnS-G</i>	<i>ycfI</i>
723	<i>Uvaria sankowskyi</i> L. L. Zhou, Y. C. F. Su & R. M. K. Saunders	-	GU951719	-	GU951728	GU951737	GU951746	-	-
724	<i>Uvaria scabridula</i> (Jessup) L. L. Zhou, Y. C. F. Su & R. M. K. Saunders	-	GU951720	-	GU951729	GU951738	GU951747	-	-
725	<i>Uvaria semecarpifolia</i> Hook. f. & Thomson	-	FJ743773	-	FJ743811	FJ743845	FJ743879	-	-
726	<i>Uvaria siamensis</i> (Scheff.) L. L. Zhou, Y. C. F. Su & R. M. K. Saunders	-	FJ743752	-	FJ743790	FJ743824	FJ743859	-	-
727	<i>Uvaria sphenocarpa</i> Hook. f. & Thomson	-	FJ743774	-	FJ743812	FJ743846	FJ743880	-	-
728	<i>Uvaria topazensis</i> (Jessup) L. L. Zhou, Y. C. F. Su & R. M. K. Saunders	-	GU951721	-	GU951730	GU951739	GU951748	-	-
729	<i>Uvaria uhrii</i> (F. Muell.) L. L. Zhou, Y. C. F. Su & R. M. K. Saunders	-	GU951722	-	GU951731	GU951740	GU951749	-	-
730	<i>Uvaria unguiculata</i> (Jessup) L. L. Zhou, Y. C. F. Su & R. M. K. Saunders	-	GU951723	-	GU951732	GU951741	GU951750	-	-
731	<i>Uvaria versicolor</i> Pierre ex Engl. & Diels	-	FJ743775	-	FJ743813	FJ743847	FJ743881	-	-
732	<i>Uvaria welwitschii</i> (Hiern) Engl. & Diels	-	JN175177	-	JN175192	JN175207	JN175222	-	-
733	<i>Uvaria wrayi</i> (King) L. L. Zhou, Y. C. F. Su & R. M. K. Saunders	-	FJ743747	-	FJ743784	FJ743821	FJ743856	-	-
734	<i>Uvaria zeylanica</i> Aubl. ex Willd.	-	FJ743776	-	FJ743814	FJ743848	FJ743882	-	-
735	<i>Uvariastrum insculptum</i> (Engl. & Diels) Sprague & Hutch.	-	-	EU169725	EU169747	EU169769	EU169791	-	-
736	<i>Uvariastrum pierreanum</i> Engl.	-	-	-	EU169748	EU169770	EU169792	EU169816	-
737	<i>Uvariastrum pynaertii</i> De Wild.	-	KC627652	-	KC667802	KC628249	-	-	-
738	<i>Uvariadendron connivens</i> (Benth.) R. E. Fr.	-	-	-	KC688780	-	-	-	-

No.	Voucher information	GenBank accession numbers							
	Taxa name	<i>atpB-rbcL</i>	<i>matK</i>	<i>ndhF</i>	<i>psbA-trnH</i>	<i>rbcL</i>	<i>trnL-F</i>	<i>trnS-G</i>	<i>ycfI</i>
739	<i>Uvariodesdron kirkii</i> Verdc.	-	-	EU169726	EU169749	EU169771	EU169793	EU169817	-
740	<i>Uvariodesdron molundense</i> (Diels) R. E. Fr.	-	-	EU169727	EU169750	EU169772	EU169794	EU169818	-
741	<i>Uvariodesdron</i> sp. PM4812	-	KC627429	-	KC667591	KC627977	-	-	-
742	<i>Uvariopsis bakeriana</i> (Hutch. & Dalziel) Robyns & Ghesq.	-	KC627573	-	KC667743	KC628178	-	-	-
743	<i>Uvariopsis korupensis</i> Gereau & Kenfack	-	KC627757	EU169729	EU169752	EU169774	EU169796	EU169820	-
744	<i>Uvariopsis tripetala</i> (Baker f.) G. E. Schatz	-	-	EU169712	EU169735	EU169758	EU169780	EU169802	-
745	<i>Uvariopsis vanderystii</i> Robyns & Ghesq.	-	-	EU169728	EU169751	EU169773	EU169795	EU169819	-
746	<i>Wangia saccopetaloides</i> (W. T. Wang) X. Guo & R. M. K. Saunders	-	KF680920	KF680923	KF680924	KF680926	KF680930	-	KF680932
747	<i>Winitia cauliflora</i> (Scheff.) Chaowasku	-	AY518800	JX544776	JX544789	-	AY319168	-	JX544764
748	<i>Winitia expansa</i> Chaowasku	-	KC857617	KC857618	KC857619	-	KC857616	-	KC857620
749	<i>Xylopiya acutiflora</i> (Dunal) A. Rich.	-	KC627830	-	KC668016	KC627989	-	-	-
750	<i>Xylopiya aethiopica</i> (Dunal) A. Rich.	-	KC627474	-	KC667638	KC628042	-	-	-
751	<i>Xylopiya ferruginea</i> (Hook. f. & Thomson) Hook. f. & Thomson	-	DQ125063	EF179311	DQ125133	AY841666	AY841744	-	-
752	<i>Xylopiya frutescens</i> Aubl.	-	JQ586527	-	AY841441	AY841667	AY841745	-	-
753	<i>Xylopiya nitida</i> Ast	-	FJ514650	-	GQ428667	FJ037960	-	-	-
754	<i>Xylopiya peruviana</i> R. E. Fr.	EF179276	AY238967	EF179312	DQ125134	AY238958	EF179320	EF179353	-